

LIGO-8940022-00-13

* * * **FACSIMILE MESSAGE** * * *

CBI TECHNICAL SERVICES
1501 NORTH DIVISION STREET
PLAINFIELD, ILLINOIS 60544 8929

FAX NUMBER IS: 815 439 6011
VERIFY NUMBER IS: 815 439 6322

PAGE: 1 OF: 3

DATE: July 12, 1994

TO: Larry Jones
Caltech

FAX NO.: 818/304-9834

FROM: Warren A. Carpenter
Process Engineering Department
CBI Technical Services Co.

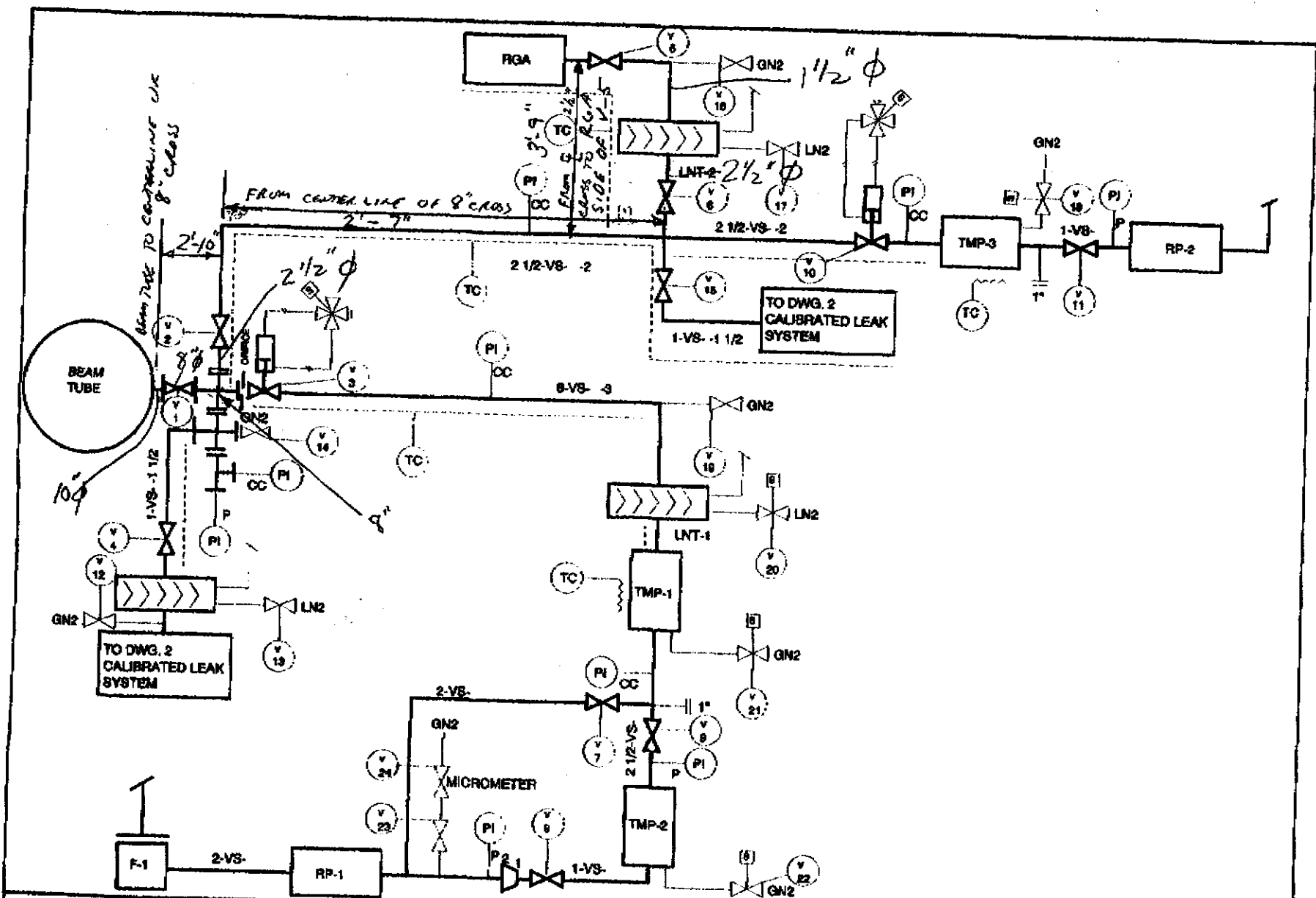
RE: Qual. Test RGA Location
LIGO QUALIFICATION TEST
FACILITY
930212 File #2.2.5

1. Attached is the current P & I for the Beam Tube Qualification Test. I have shown the dimensions that you have requested on the first sheet of the P & I. The basic dimensions are 2'-10" from the beam tube to the centerline of the 8" cross, 2'-7" from the centerline of the 8" cross to the centerline of the 2 1/2" cross where the RGA line branches off the small pump line, and 3'-9" from the centerline of the 2 1/2" cross the the back side (RGA side) of V-5.
2. We would like to set the next meeting for either the 28 & 29 of July (or either of those days if you think we can complete in one day) or for the 1&2 of August. Let us know which days you would prefer

Regards,



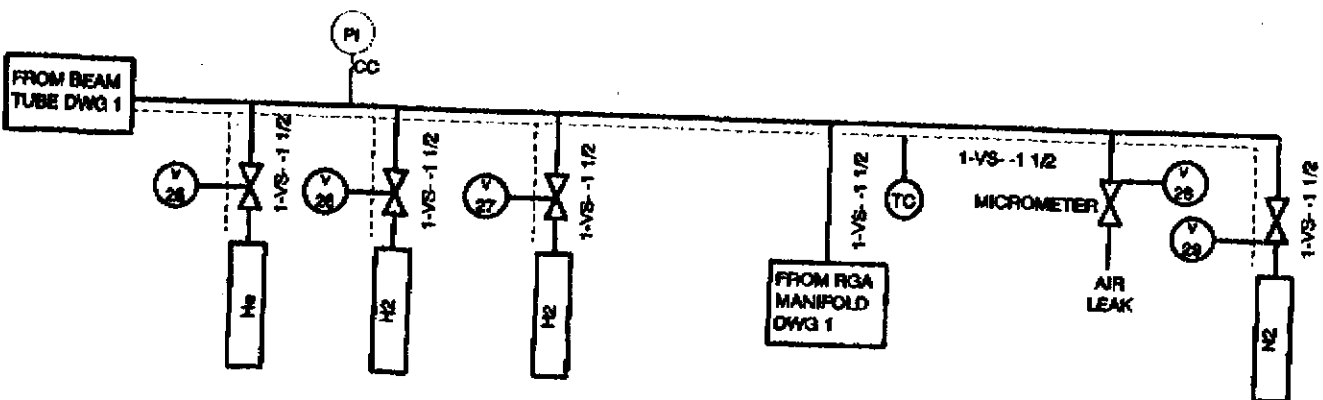
Warren A. Carpenter
Senior Engineer



P & I DIAGRAM
 VACUUM SYSTEMS
 QUALIFICATION TEST
 LIGO PROJECT
 CALTECH

BY: HOND, CHND DATE: 07/07/94
 R. O. MERRY
 ENGINEERING SUPERVISOR

CONTRACT NO. 890212	
DWG 1	REV 0



P & I DIAGRAM
 CALIBRATED LEAK SYSTEM
 QUALIFICATION TEST
 LIGO PROJECT
 CALTECH

BY DWD DATE 8/14/94
 R. O. WEBER
 SUPERVISOR

CONTRACT NO.
 6602212

DWG	2	REV	4
INT	1		