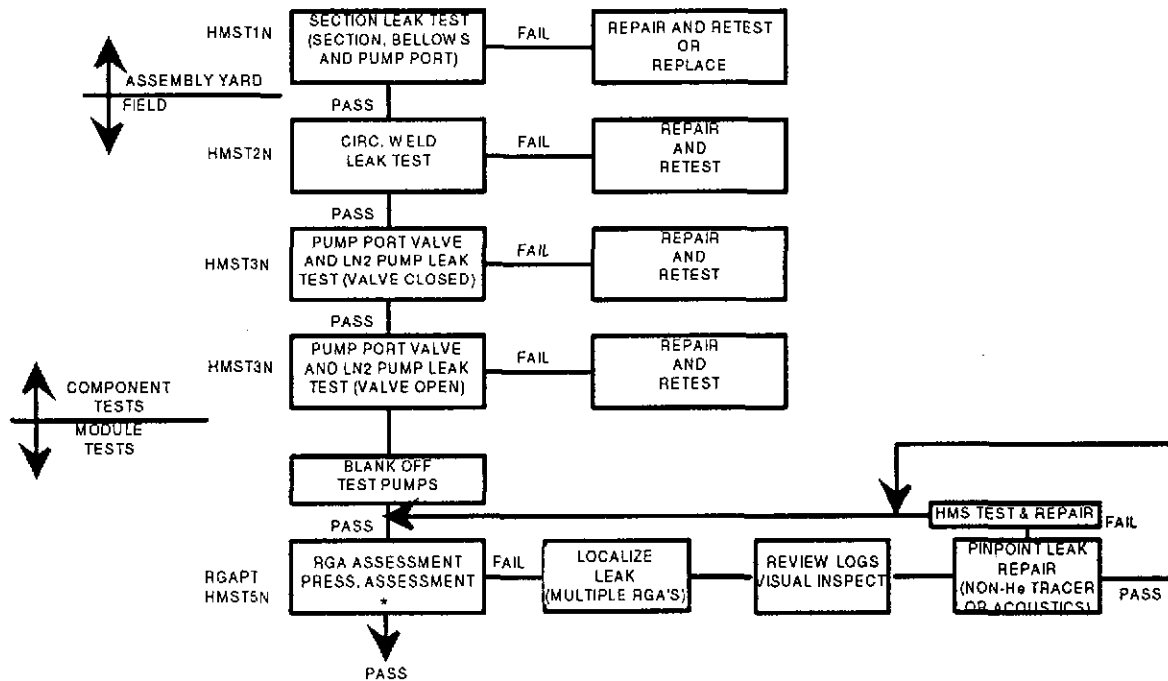


LEAK DETECTION DECISION TREE



* Acceptance criteria is : Two times the smallest detectable leak which must be smaller than 1E-5 atm. cc/sec. but no smaller than 2E-8 atm. cc/sec.

APPROVED

M. Jellalain 11/10/95
 CBI DATE

J. Jones 11/10/95
 CALVIN H DATE

BY: WAC
 DATE: 2/25/94
 Rev. 1
 By: WLR
 DATE: 8/9/85

1190-8950071-01-B