

INITIATOR 124

DATE 9-17-98

LIQO-E980571-00-D

**ENGINEERING CHANGE REQUEST (ECR)**

NEXT ASSEMBLY NO. D972001 + 501

CUSTOMER DRAWING NO. D972716

DRAWING TITLE CUSTOM VENTED WASHER

REVISION: FROM 01 TO A



**HYTEC**  
INCORPORATED

**DESCRIPTION OF CHANGE (Simple Phrase. Identify Dims if Possible):**

- ① CHANGE MAT'L TO 303 SST
- ② CORRECT WEIGHT
- ③ ADD NOTE 12: ALIGNMENT BETWEEN SLOTS NOT REQ.
- ④ REMOVE "4X R MSN" ⇒ CHG 1

**REASONS FOR CHANGE:**

- ① ③ REDUCE COST
- ② CORRECT DWG
- ④ CLARIFY DWG

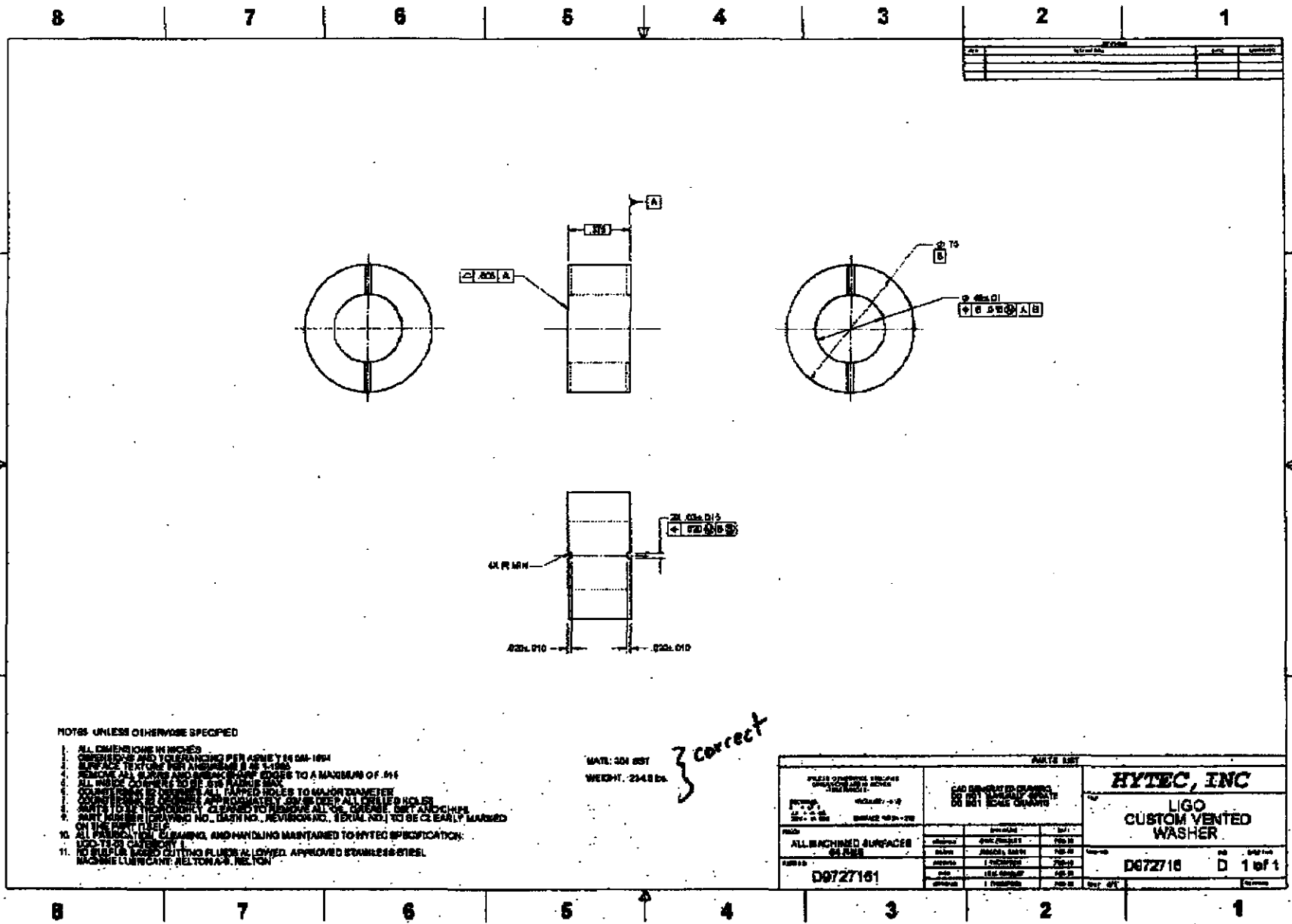
**IDENTIFY OTHER PARTS/GROUPS THAT INTERFACE WITH THE ABOVE (Required):**

INTERFACE	RESPONSIBLE PARTY	INITIAL

NOTIFY COGNIZANT DESIGNER: ROGER

NOTIFY COGNIZANT ENGINEER: TIM

APPROVED: \_\_\_\_\_



NOTES UNLESS OTHERWISE SPECIFIED

1. ALL DIMENSIONS IN INCHES.
2. FINISH AND TOLERANCING PER ASMEY 14.00-1994.
3. SURFACE TEXTURE PER ASMEY 14.00-1994.
4. REMOVE ALL BURRS AND SHARP CORNERS TO A MAXIMUM OF .015.
5. ALL HOLE LOCATIONS TO BE .5X HOLE DIA.
6. COORDINATE SYSTEMS: ALL HOLE LOCATIONS TO MAJOR DIAMETER.
7. COORDINATE SYSTEMS APPROXIMATELY .5X DIA. ALL CHILLED HOLE.
8. PART NUMBER (DRAWING NO., PART NO., REVISION NO., SERIAL NO.) TO BE CLEARLY MARKED ON THE PART.
9. ALL PARTS TO BE CLEANED AND HANDLING MAINTAINED TO HYTEC SPECIFICATION: 100-112-010-01.
10. NO FLUORIDE BASED CUTTING FLUIDS OR LOWED. APPROVED STAINLESS STEEL MACHINE LUBRICANT: BELTOWAS, BELTON.

MATL: 304 SST  
 WEIGHT: 254.8 lbs

*correct*

PARTS LIST		HYTEC, INC	
ALL MACHINED SURFACES TO BE .5X HOLE DIA.		LIGO CUSTOM VENTED WASHER	
PART NO: D0727101		REV: 01	
DATE: 09/20/98		DRAWN BY: [Name]	
CHECKED BY: [Name]		APPROVED BY: [Name]	
MATERIAL: 304 SST		WEIGHT: 254.8 lbs	

8 7 6 5 4 3 2 1

D

C

B

A

8 7 6 5 4 3 2 1

D

C

B

A