



DOCUMENT CHANGE NOTICE (DCN)

DOCUMENT No. (DOC-REV-GP. ID)	TITLE	NEW REV.
D980289-A	Cavity Beam Dump Glass Mounting Plate 1	B
D980292-A	Cavity Beam Dump Glass Mounting Plate 2	B
D980348-A	Cavity Beam Dump Side Plate	B
D980378-A	Cavity Beam Dump Stiffener Block	B

CHANGE DESCRIPTION (FROM/TO):

D980289: Revised callout for 9 countersunk screw holes, specifying countersink diameter.

D980292: Revised callout for 9 countersunk screw holes, specifying countersink diameter. Added clearance holes for 3/8" mounting bolts (Identical to holes on D980289-A). Also made dimensional adjustments for proper fit.

D980348: Changed all 11 clearance hole diameters from .177 to .219 to achieve fit on assembly.

D980378: Changed 3/8-16 thread depth callout to "THRU" in both places on drawing.

ACTION: Incorporate change Attach DCN to drawing(s) Other action (specify):

DISPOSITION OF HARDWARE (IDENTIFY SERIAL NUMBERS)

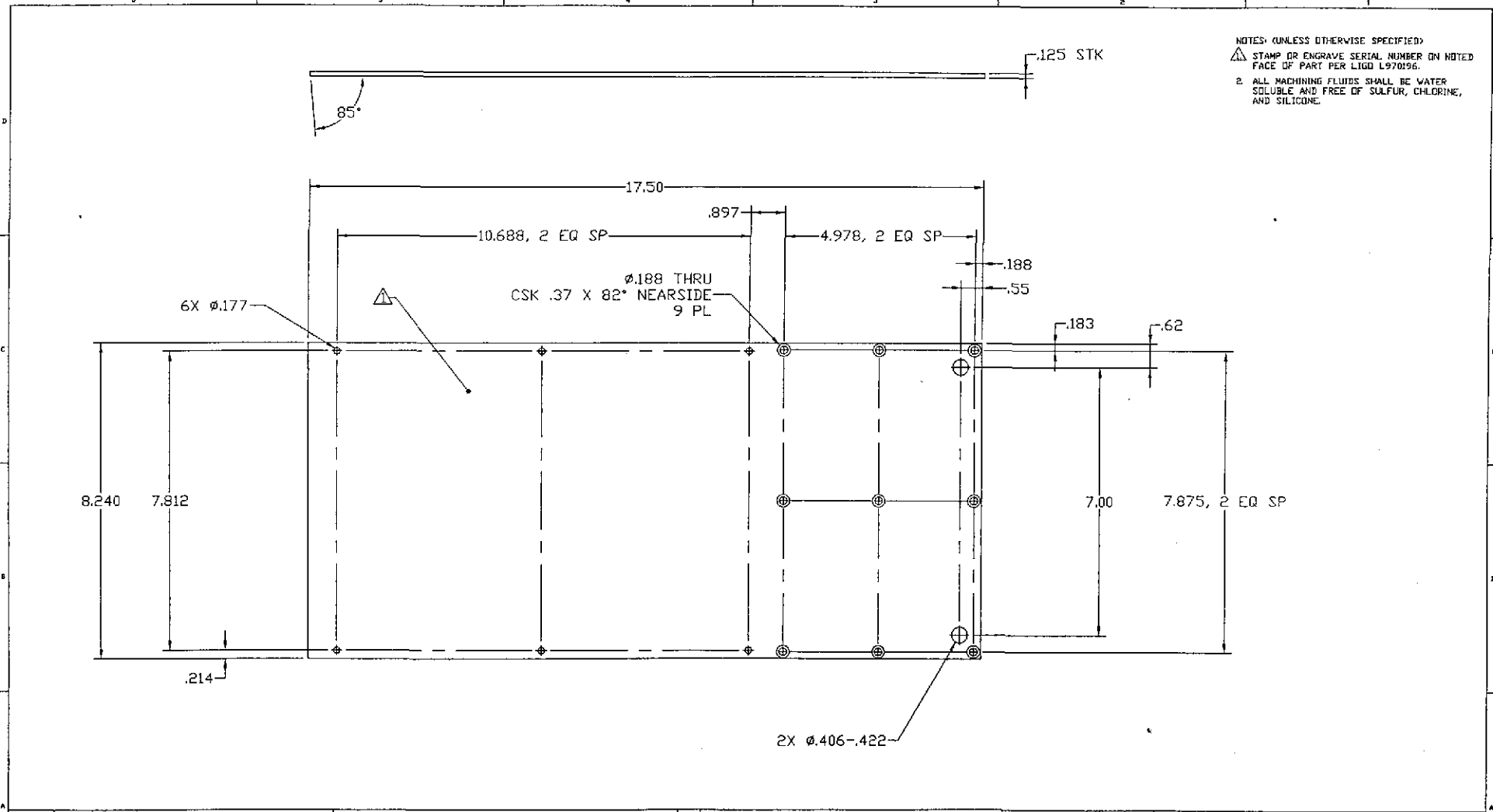
- No hardware affected (record change only)
- List S/Ns which comply already:
- List S/Ns to be reworked or scrapped:
- List S/Ns to be built with this change: D980348: 011 thru -, others: 006 thru -
- List S/Ns to be retested per this change:
-
-
-
-

DCN DISTRIBUTION (X=incl. docs)

Althouse	Barish	Coles
X Coyne	Lazzarini	Lindquist
Sanders	Shoemaker	Stapfer
Tyler	Weiss	Whitcomb
Camp		x Conley
x Jones		x Smith

SAFETY, COST, SCHEDULE, REQUIREMENTS IMPACT? No Yes (if yes, enter Change Request number)

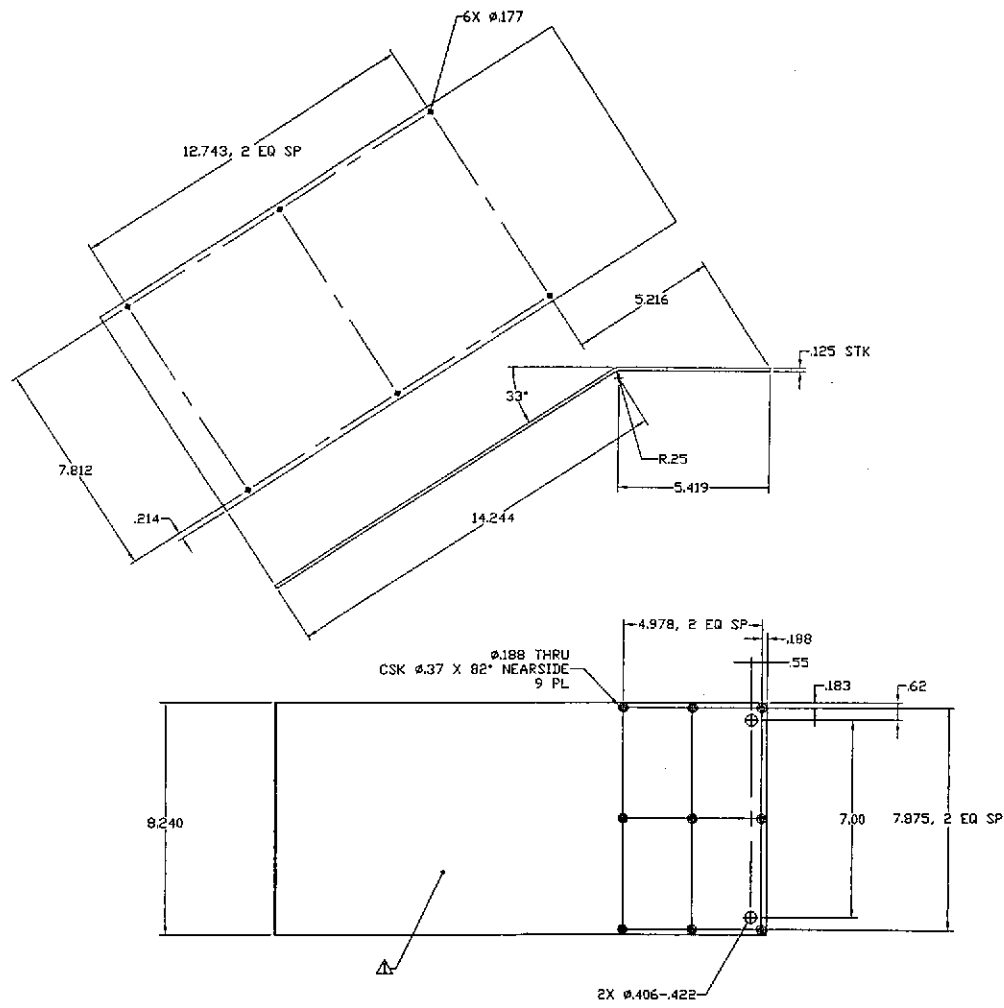
APPROVALS:	DATE	OTHER APPROVALS (specify)	DATE
ORIGINATOR: C. Conley	5-3-99		
TASK LEADER: <i>Michael Smith</i>	<i>6/2/99</i>		
GROUP LEADER: <i>Debra Coyne</i>	<i>6/3/99</i>		
DCC RELEASE: <i>[Signature]</i>			



		UNLESS OTHERWISE SPECIFIED DIMENSIONS ARE IN INCHES				LIGO CALIFORNIA INSTITUTE OF TECHNOLOGY MASSACHUSETTS INSTITUTE OF TECHNOLOGY	
		TOLERANCES FRACTIONAL ± ANGULAR ± ANGULAR HORN & BEND ± TWO PLACE DECIMAL ±.02		THREE PLACE DECIMAL ±.005 FINISHED SURFACE RMS BREAK CORNERS TO .001±.005-.010 REMOVE ALL BURRS		Cavity 4-30-99	
		MATERIAL: 6061-T6 ALU	HEAT TREAT:	FINISH:		Cavity 1-8-99	CAD FILE
		USED IN:	NEXT ASSY: D980094	REV	DESCRIPTION	DATE	D980089-8.dwg
6 REFERENCE DRAWINGS		3		4		5	
				ISSUE DESCRIPTION		SCALE: NTS	
						SIZE: 8 1/2 x 11	
						SHEET: 1 OF 1	

Cavity Beam Dump
Glass Mounting Plate 1

D980089-B

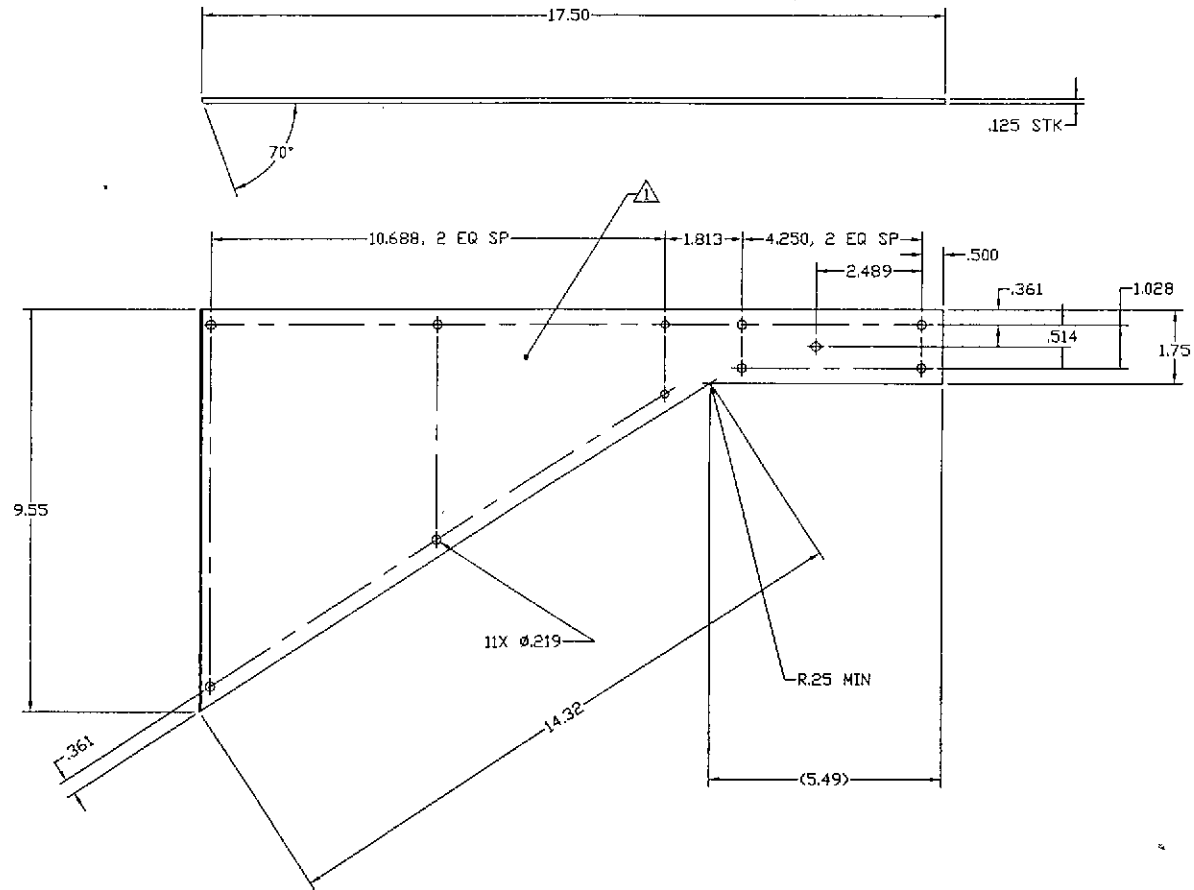


NOTES: (UNLESS OTHERWISE SPECIFIED)
 1. STAMP OR ENGRAVE SERIAL NUMBER ON NOTED FACE OF PART PER LIGO L970496.
 2. ALL MACHINING FLUIDS SHALL BE WATER SOLUBLE AND FREE OF SULFUR, CHLORINE, AND SILICONE.

		UNLESS OTHERWISE SPECIFIED DIMENSIONS ARE IN INCHES						LIGO CALIFORNIA INSTITUTE OF TECHNOLOGY MASSACHUSETTS INSTITUTE OF TECHNOLOGY	
		TELEANCES: FRACTIONAL ± ANGULAR ±	THREE PLACE DECIMAL ±.005					CAVITY BEAM DUMP GLASS MOUNTING PLATE 2	
		ANGULAR APPROX ± BEND ± TWO PLACE DECIMAL ±.03	FINISHED SURFACE RMS 300µ CORNERS 10µ (DUTY 005-310) REMOVE ALL BURRS						
		MATERIAL: 6061-T6 ALU	HEAT TREAT:	FINISH:					
		USED ON:	NEXT ASS'Y: D990994						
DWG. NO.		DESCRIPTION		REV.		APPROV. (CHECK)		DATE	
REFERENCE DRAWINGS				DESCRIPTION		DATE		DATE	
				ISSUE DESCRIPTION		SCALE		SHEET	
						D980292-B		1 OF 1	

NOTES: (UNLESS OTHERWISE SPECIFIED)
 ▲ STAMP OR ENGRAVE SERIAL NUMBER ON NOTED FACE OF PART PER LIGO L970196.

2. ALL MACHINING FLUIDS SHALL BE WATER SOLUBLE AND FREE OF SULFUR, CHLORINE, AND SILICONE.



		UNLESS OTHERWISE SPECIFIED DIMENSIONS ARE IN INCHES						LIGO CALIFORNIA INSTITUTE OF TECHNOLOGY MILLIKEN/REITSER INSTITUTE OF TECHNOLOGY	
		TOLERANCES: FRACTIONAL & ANGULAR & ANGULAR/ARCH & BEND & TWO PLACE DECIMAL ±.01	THREE PLACE DECIMAL ±.005 FINISHED SURFACE RING BREAK CORNERS 1/4 ELT. 805-210 REMOVE ALL BURRS					CAVITY BEAM DUMP SIDE PLATE	
		MATERIAL: 6061-T6 ALU	HEAT TREAT:	FINISH:					CONSOLE FILE 0980346-3.dwg
DRAWING NO.		DESCRIPTION		REV.		APPROV.	CHECK	DATE	DRAWING NO. B 0980346-B
REFERENCE DRAWINGS		NEXT ASSY: 0990994		ISSUE DESCRIPTION				DATE	SHEET 1 OF 1

6

5

4

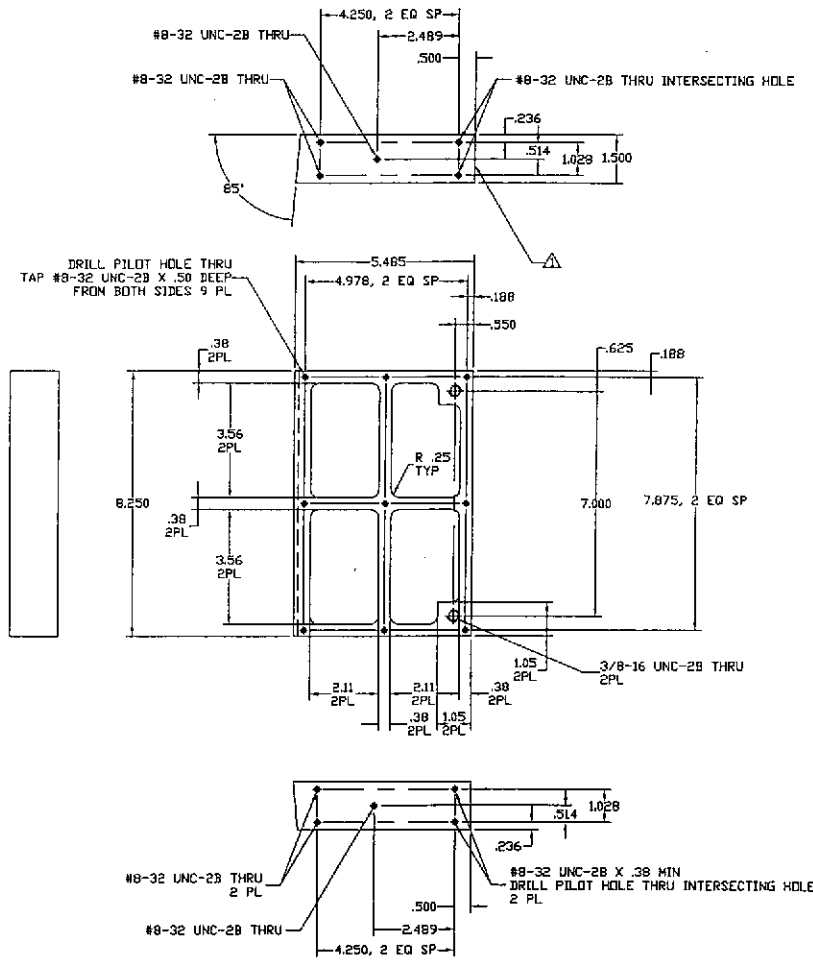
3

2

1

NOTES: (UNLESS OTHERWISE SPECIFIED)
 ▲ STAMP OR ENGRAVE SERIAL NUMBER ON NOTED FACE OF PART PER LIGD L970196.

2. ALL MACHINING FLUIDS SHALL BE WATER SOLUBLE AND FREE OF SULFUR, CHLORINE, AND SILICONE.



		UNLESS OTHERWISE SPECIFIED DIMENSIONS ARE IN INCHES						LIGO CALIFORNIA INSTITUTE OF TECHNOLOGY MAGS03/0575 INSTITUTE OF TECHNOLOGY	
		TOLERANCES: FRACTIONAL ± ANGULAR ± ANGULAR APPROX ± BEND ± TWO PLACE DECIMAL ±.01		THREE PLACE DECIMAL ±.005 FINISHED SURFACE RMS BREAK CORNERS TO DIM. 205-010 REMOVE ALL BURRS				Cavity 4-30-99	
		MATERIAL: 6061-T6 ALU		HEAT TREAT: T7052				Cavity 1-2-99	
DWG. NO.		DESCRIPTION		REV		DESCRIPTION		APPROV CHECK DRAW DATE	
REFERENCE DRAWINGS		USED ON		NEXT ASSY: D99004		ISSUE DESCRIPTION		DWG FILE: D980378-B.dwg	
								SIDE DWG. NO: B	
								PART: D980378-B	
								1 OF 1	