



# DOCUMENT CHANGE NOTICE (DCN)

DOCUMENT No. (DOC-REV-GP. ID)	TITLE	NEW REV.
D990206-n/a	Plate Beam Dump Offset Assembly, BSC7, 4KITMXHR4, BSC8, 4KITMYHR4	A
D990206-A	Plate Beam Dump Offset Assembly, BSC7, 4KITMXHR4, BSC8, 4KITMYHR4	B
D990236-n/a	Plate Beam Dump Backplate_Offset, BSC7, 4KITMXHR4, BSC8, 4KITMYHR4	A
D990236-A	Plate Beam Dump Backplate_Offset, BSC7, 4KITMXHR4, BSC8, 4KITMYHR4	B
D990238-n/a	Plate Beam Dump Assembly, BSC4, 2KITMYAR4	A
D990238-A	Plate Beam Dump Assembly, BSC4, 2KITMXAR4, 2KITMYAR4	B
D990239-n/a	Plate Beam Dump Assembly, BSC4, 2KITMXAR4	A
D990240-n/a	Plate Beam Dump Backplate	A
D990240-A	Plate Beam Dump Backplate	B
D990241-n/a	Plate Beam Dump 14-5 Backplate	A
D990252-n/a	Cavity Beam Dump Housing Tube, BSC4, 2KITMXAR1, 2KITMYAR1, 2KRMHR3	A
D990252-A	Cavity Beam Dump Housing Tube, BSC2, 4KITMXAR1, 4KITMYAR1, BSC4, 2KITMXAR1, 2KITMYAR1, 2KRMHR3	B
D990253-n/a	Plate Beam Dump Extension Tube, BSC2, 4KITMXAR4, 4KITMYAR4, BSC4, 2KBSHR3P-2	A
D990335-n/a	Beam Dump Flex Hinge H_Tube, 2KITMYAR4	A
D990336-n/a	Beam Dump Flex Hinge H_Tube, 2KITMXAR4	A

**CHANGE DESCRIPTION (FROM/TO):**

Changes from original designs and prototypes. Horizontal beam size was changed from 4" sq. to 6" sq. Plate beamdumps were designed to replace cavity beamdumps for fourth order ghost beams, vertical tubes were redesigned to use in as many places as possible.

**ACTION:**  Incorporate change  Attach DCN to drawing(s)  Other action (specify):

**DISPOSITION OF HARDWARE (IDENTIFY SERIAL NUMBERS)**

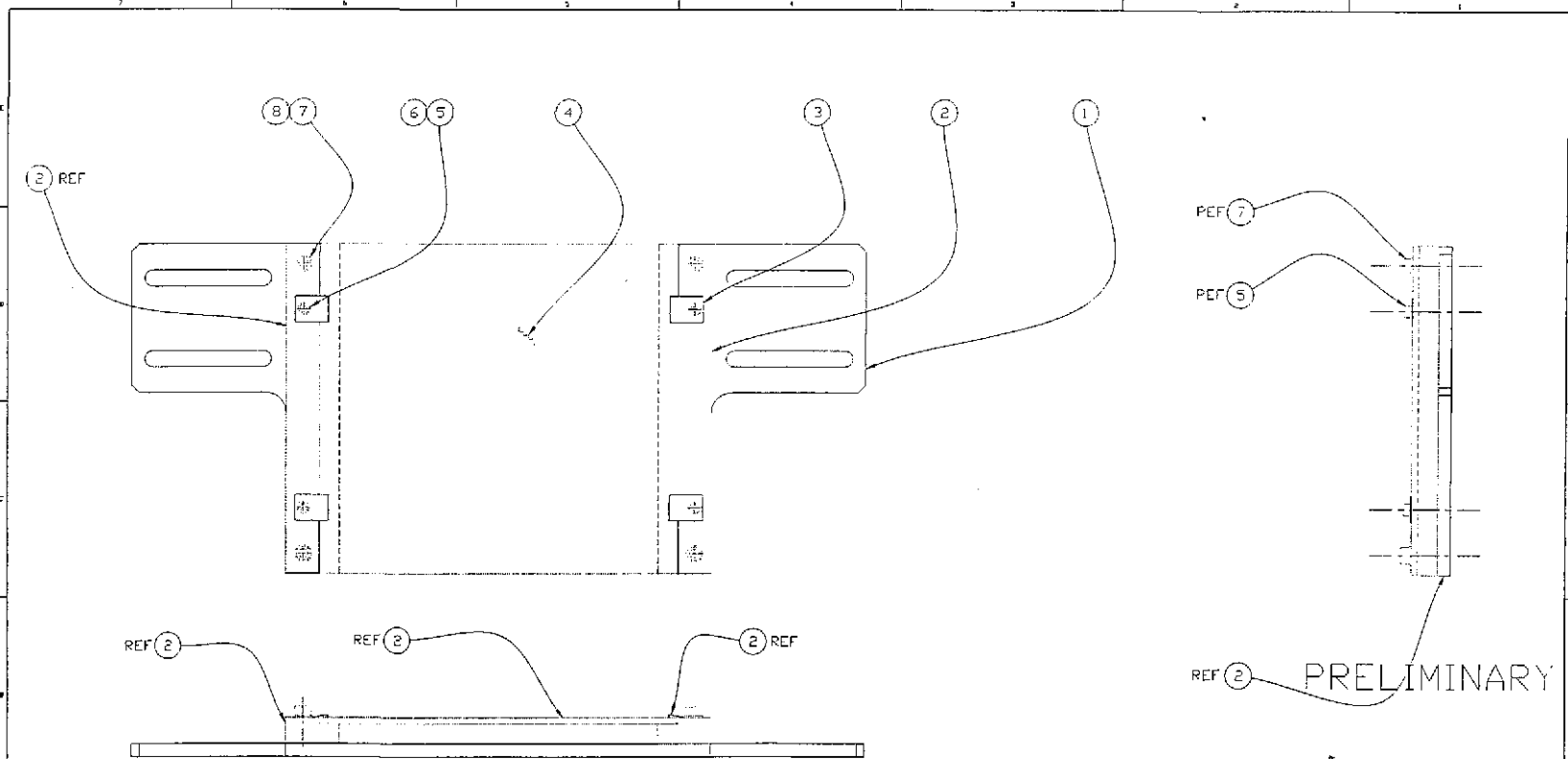
- No hardware affected (record change only)
- List S/Ns which comply already:
- List S/Ns to be reworked or scrapped:
- List S/Ns to be built with this change: all parts: 001 & up
- List S/Ns to be retested per this change:
- 
- 
- 
- 

**DCN DISTRIBUTION (X=incl. docs)**

Althouse	Barish	Coles
x Coyne	Lazzarini	Lindquist
Sanders	Shoemaker	Stapfer
Tyler	Weiss	Whitcomb
Camp	x Conley	
x Jones	x Smith	

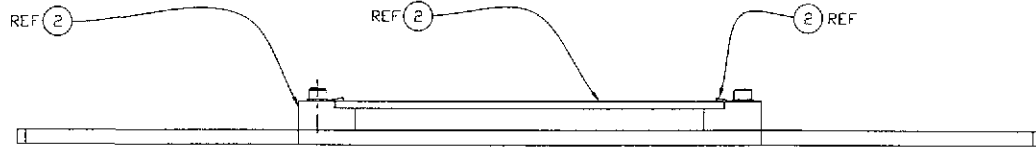
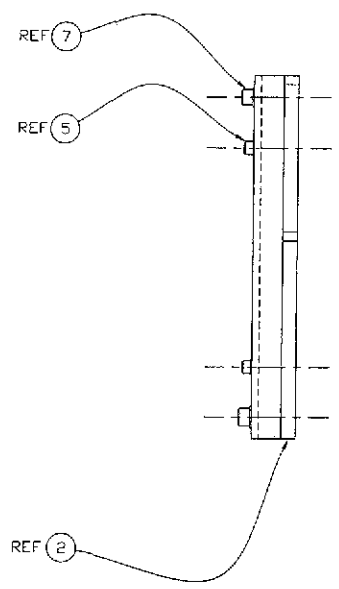
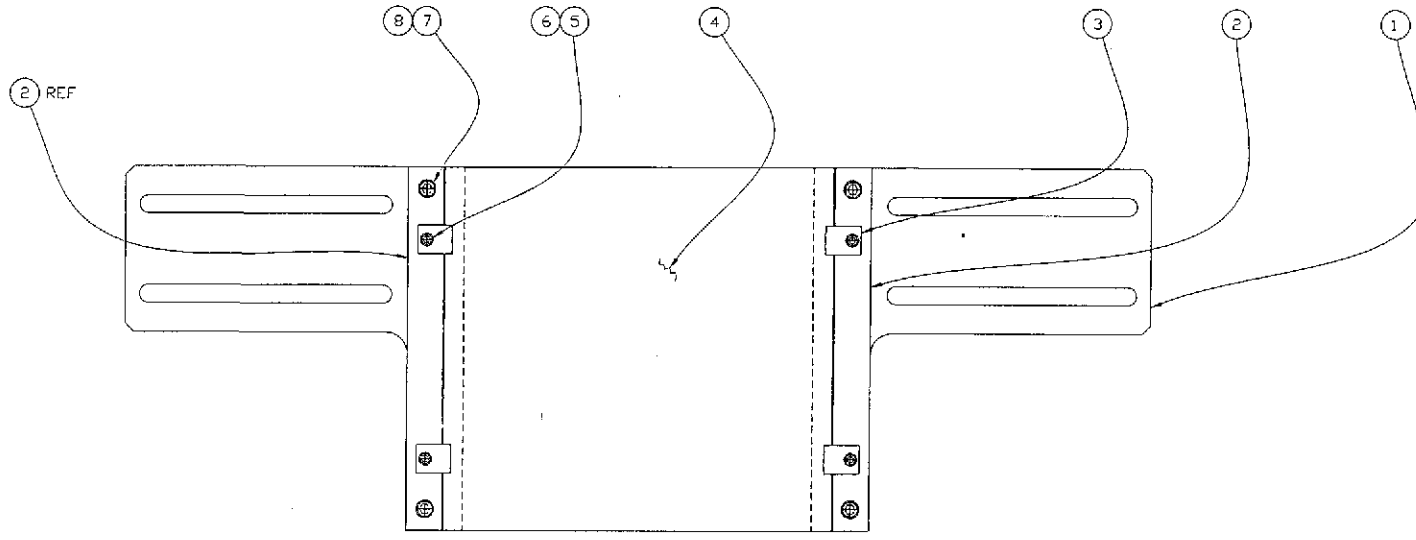
**SAFETY, COST, SCHEDULE, REQUIREMENTS IMPACT?**  No  Yes (if yes, enter Change Request number )

APPROVALS:	DATE	OTHER APPROVALS (specify)	DATE
ORIGINATOR: C. Conley	5-28-99		
TASK LEADER: <i>Michael Smith</i>	6/1/99		
GROUP LEADER: <i>Dominic Coyne</i>	6/3/99		
DCC RELEASE: <i>Sandra Luman</i>	6-23-99		



REV	DESCRIPTION	DATE	BY	CHECKED	DATE	MATERIAL
8	U-C CONNECTORS #WV-10	199 ed v 351 ed v 032 TRK VENTED PL WASH	STLSS	STL		
7	McMaster-Carr #21146245	1/2" dia x .75 long SHCS	STLSS	STL		
6	U-C CONNECTORS #WV-10	1/2" dia x .587 ed v 316 TRK VENTED PL WASH	STLSS	STL		
5	McMaster-Carr #22126112	1/2" dia x .75 long SHCS	STLSS	STL		
4	D990206-5	GLASS				
3	D990206-3	CLAMP				
2	D990206-2	RAIL				
1	D990206-1	BACKPLATE				
REF (5)	PART or DRAWING No.	DESCRIPTION	PARTS and MATERIAL LIST		MATERIAL	

UNLESS OTHERWISE SPECIFIED DIMENSIONS ARE IN INCHES (1:1)		FRACTIONAL & 1/8" ANGULAR & 1/2" ANGULAR & 3/8" & 1/2" PLACE DECIMAL (1:1)		THREE PLACE DECIMAL (1:1) FINISH SURFACE RING BREAK CORNER .005 ± .015 REMOVE ALL BURRS		1100 NATIONAL BUREAU OF STANDARDS PLATE BEAM DUMP ASSEMBLY BSC7 SKITONHR4 BSC6 SKITONHR4 DRAWING NO. 0990206-A SHEET 1 OF 1	
DATE	DESCRIPTION	MATERIAL	HEAT TREAT	FINISH	REV	RELEASE	DATE



PRELIMINARY

REF	QTY	PART or DRWG No.	DESCRIPTION	MATERIAL
8	4	U-C COMPONENTS W/F V-10	1195 id x .054 od x .032 THK VENTED PL WASH	STAINLESS STL
7	4	McMaster-Carr #92196A245	#10-24 x .75 LONG SHCS	STAINLESS STL
6	4	U-C COMPONENTS W/F V-06	145 id x .267 od x .015 THK VENTED PL WASH	STAINLESS STL
5	4	McMaster-Carr #92196A144	#6-32 x .25 LONG SHCS	STAINLESS STL
4	1	D990206-B	GLASS	-
3	4	D990205-A	CLAMP	-
2	2	D990207-B	RAIL	-
1	1	D990206-B	BACKPLATE	-

DRWG. NO.	DESCRIPTION	MATERIAL	HEAT TREAT.	FINISH	REV	DESCRIPTION	DEN. NUMBER	APPR'D	CHECK	DRWN	DATE	SCALE	DATE	FILE	REV	DATE	FILE
					B	RELEASE	C990210			Conley	5/28/99						
					A	RELEASE	C990210			KABOI	5/14/99						
					REV	DESCRIPTION	DEN. NUMBER										

UNLESS OTHERWISE SPECIFIED  
DIMENSIONS ARE IN INCHES (UNS)

TOLERANCES:  
FRACTIONAL ± 1/64  
ANGULAR ± 1/2°  
ANGLE/HOLE ± BEND ±  
TWO PLACE DECIMAL ± .01

THREE PLACE DECIMAL ± .005  
FINISHED SURFACE RMS  
BREAK CORNERS .045 ± .015  
REMOVE ALL BURRS

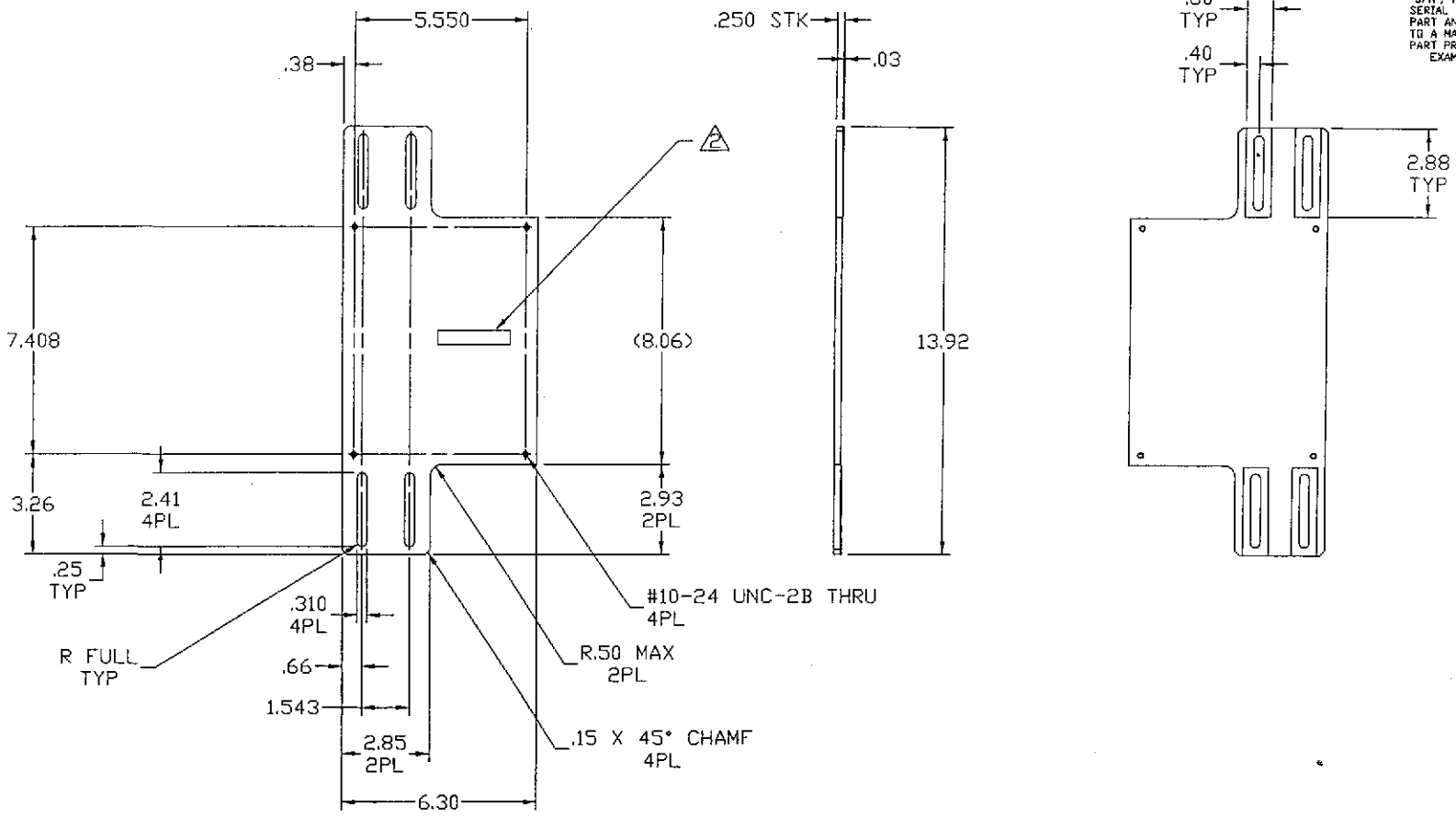
LIGO CALIFORNIA INSTITUTE OF TECHNOLOGY  
MASSACHUSETTS INSTITUTE OF TECHNOLOGY

PLATE BEAM DUMP OFFSET  
ASSEMBLY  
BSC7, 4KITMXHR4  
BSC8, 4KITMXHR4

DATE: 5/28/99  
SCALE: 1:1  
REV: D  
PART: D990206-B

NOTES: (UNLESS OTHERWISE SPECIFIED)

- CUTTING FLUIDS TO BE WATER SOLUBLE AND FREE OF SULFUR, CHLORINE, & SILICONE.
- STEEL STAMP OR ENGRAVE THE DRAWING PART NUMBER ON NOTED FACE OF PART FOLLOWED BY "S/N", THEN A THREE DIGIT SERIAL NUMBER. SERIAL NUMBERS TO START AT 001 FOR FIRST PART AND PROCEED IN A CONSECUTIVE MANNER TO A MAXIMUM OF 999, FOR EACH SUCCEEDING PART PRODUCED. USE .013 HIGH CHARACTERS. EXAMPLE: D990039-A S/N 001



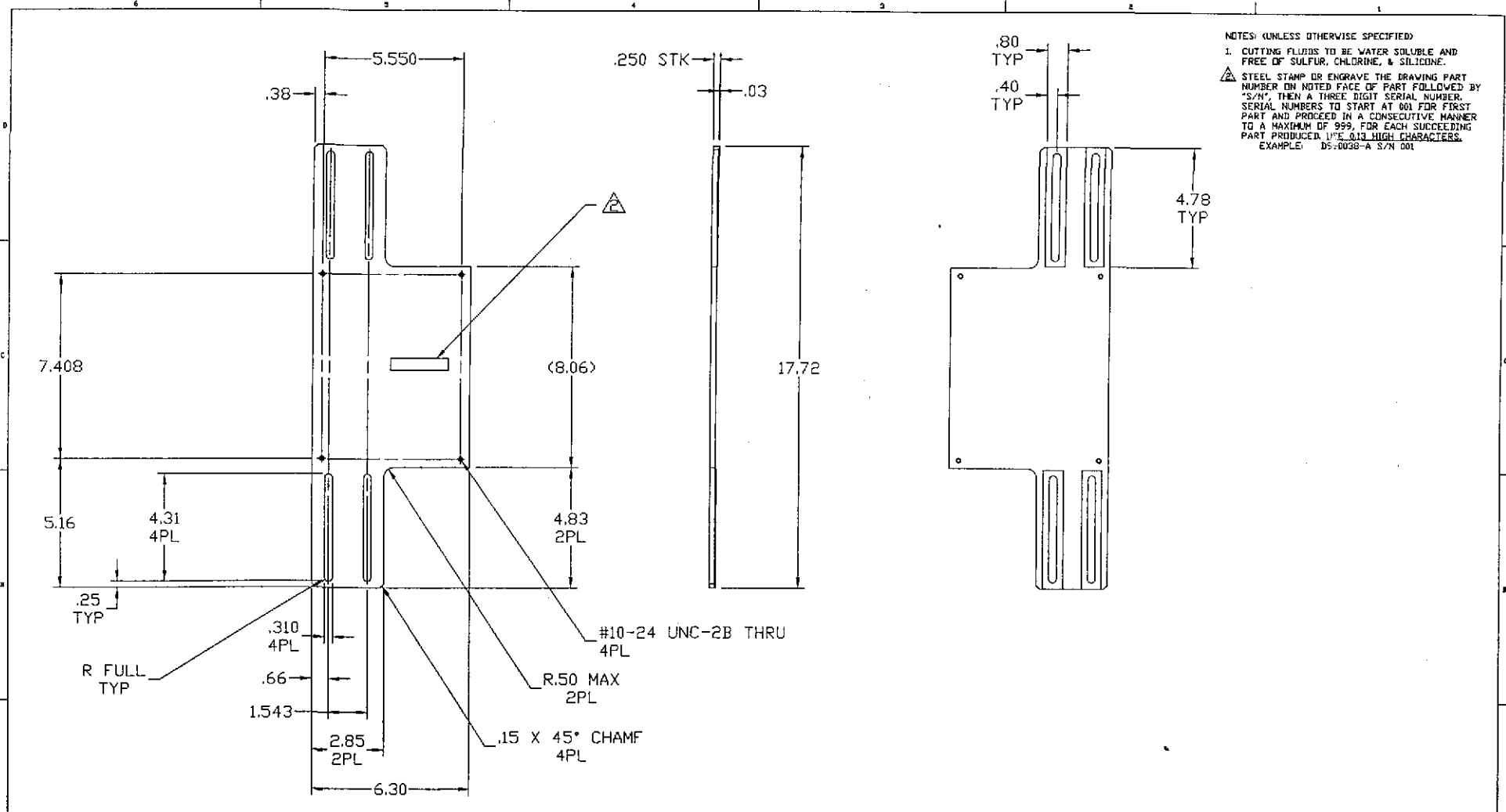
UNLESS OTHERWISE SPECIFIED DIMENSIONS ARE IN INCHES		TOLERANCES: FRACTIONAL & ANGULAR & ANGULAR APPROX & BEND & TWO PLACE DECIMAL .020		THREE PLACE DECIMAL .005 FINISHED SURFACE RING BREAK CORNERS IN DUTY .005-.010 REMOVE ALL BURRS		MATERIAL: 6061-T6 ALU JIG PLATE 1/4" THICK		HEAT TREAT:		FINISH:		A		DCH E99020		DATE: 5-13-99		SCALE: NTS		D990236-A	
DATE	DESCRIPTION	USED IN	REVISION	DESCRIPTION	APPROVED	CHECK	DRWN	DATE	SCALE	NTS	REV	DESCRIPTION	ISSUE DESCRIPTION	APPROVED	CHECK	DRWN	DATE	SCALE	NTS	REV	DESCRIPTION

MIT CALIFORNIA INSTITUTE OF TECHNOLOGY  
MASSACHUSETTS INSTITUTE OF TECHNOLOGY

PLATE BEAM DUMP BACKPLATE

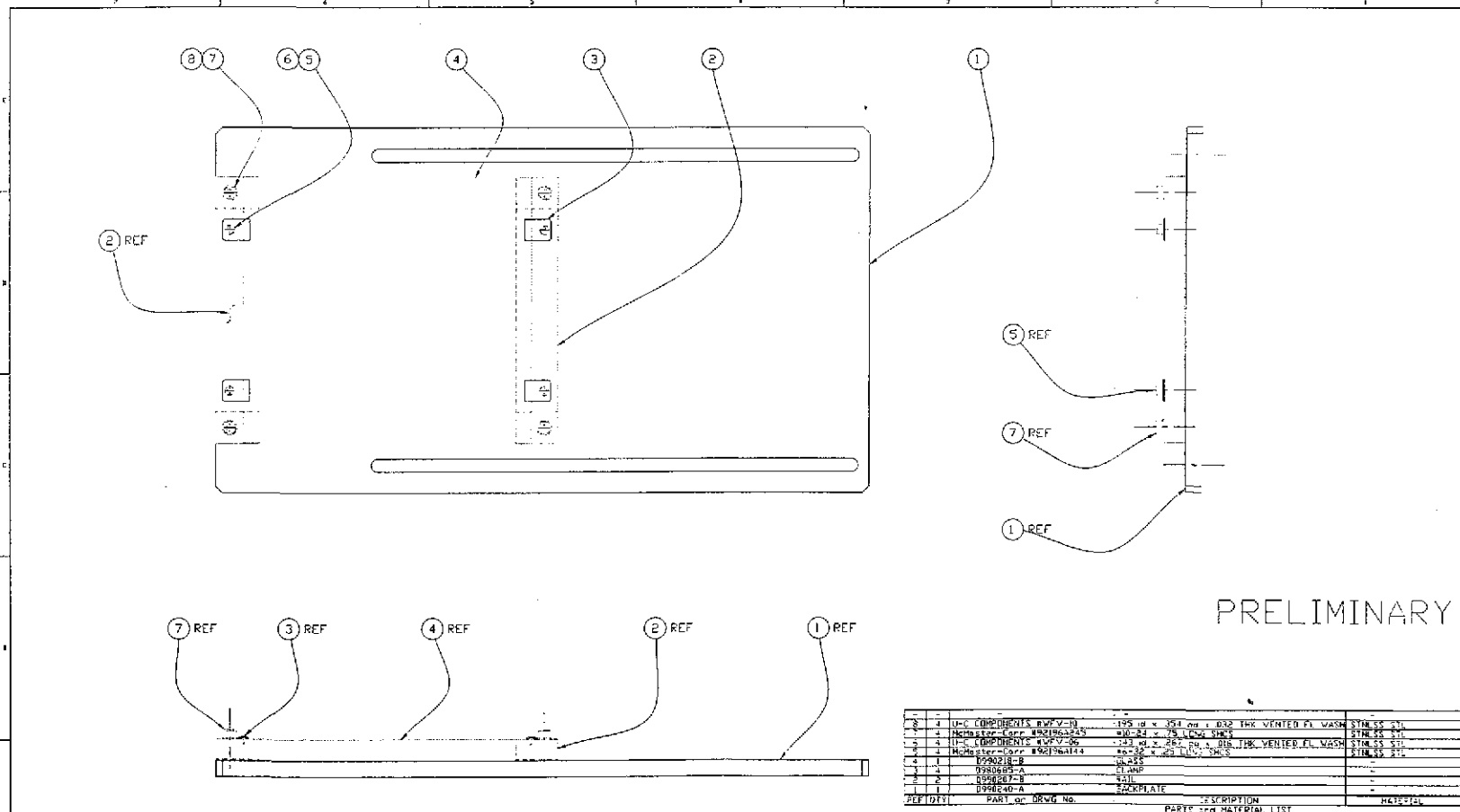
D990236-A  
D990236-A

3 OF 1



NOTES: UNLESS OTHERWISE SPECIFIED  
 1. CUTTING FLUIDS TO BE WATER SOLUBLE AND FREE OF SULFUR, CHLORINE, & SILICONE.  
 ⚠ STEEL STAMP OR ENGRAVE THE DRAWING PART NUMBER ON NOTED FACE OF PART FOLLOWED BY "S/N", THEN A THREE DIGIT SERIAL NUMBER, SERIAL NUMBERS TO START AT 001 FOR FIRST PART AND PROCEED IN A CONSECUTIVE MANNER TO A MAXIMUM OF 999, FOR EACH SUCCEEDING PART PRODUCED, USE .013 HIGH CHARACTERS. EXAMPLE: DS-0038-A S/N 001

UNLESS OTHERWISE SPECIFIED DIMENSIONS ARE IN INCHES		LIGO CALIFORNIA INSTITUTE OF TECHNOLOGY MAGNETIC RESONANCE INSTITUTE OF TECHNOLOGY	
TOLERANCES: FRACTIONAL ± ANGULAR ± ANGULAR ± TWO PLACE DECIMAL ±		THREE PLACE DECIMAL ±.005 FINISHED SURFACE RMS BREAK CORNERS BY D177-005-001 REMOVE ALL BURRS	
MATERIAL: 6061-T6 ALU JIG PLATE 1/4" THICK		HEAT TREAT: FINISH:	
USED ON:		NEXT ASSY: 0990206	
JWG: ML REFERENCE DRAWINGS	DESCRIPTION	REV A B	DESCRIPTION BSC7, 4KITMHR4, BSC8, 4KITMYHR4
		APPR'D Conley	CHECK Conley
		DATE 5-20-99	DATE 5-13-99
		SCALE NTS	DRAWING NO. D990236-B
		SHEET 1 OF 1	

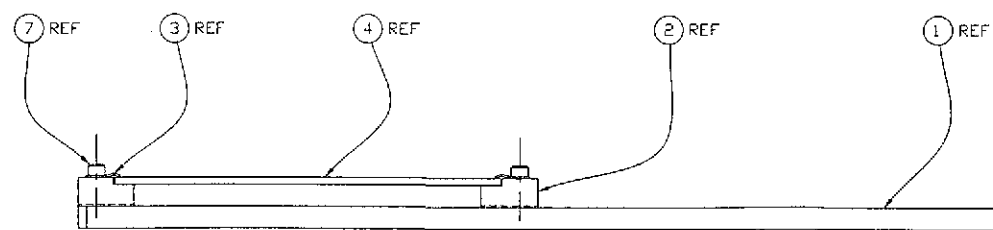
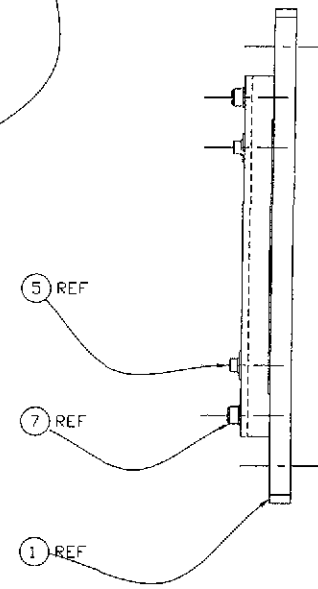
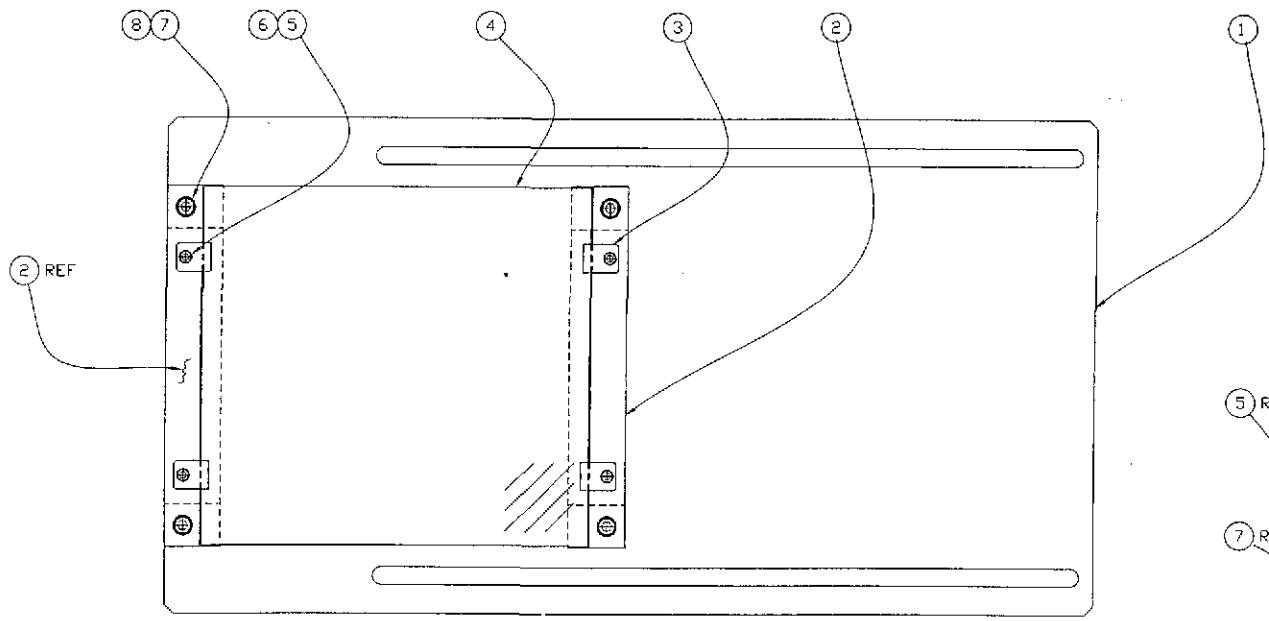


PRELIMINARY

QTY	PART OR DRAWG NO.	DESCRIPTION	MATERIAL
2	U-C CORPONENTS BWPV-10	195 dia x .251 dia x .032 THK VENTED FL WASH	STAIN SS 316
2	HexNuts-Corr #201962249	#10-24 x .75 1/2 DIA SS	STAIN SS 316
2	U-C CORPONENTS BWPV-100	173 dia x .261 dia x .018 THK VENTED FL WASH	STAIN SS 316
2	HexNuts-Corr #201962114	#10-24 x .75 1/2 DIA SS	STAIN SS 316
4	D990238-B	W-250	-
2	D990238-A	1/2 DIA	-
2	D990237-B	1/2 DIA	-
2	D990240-A	22K PLATE	-

TOLERANCES		UNLESS OTHERWISE SPECIFIED		DIMENSIONS ARE IN INCHES (mm)		FINISHES		RELEASE		DATE		DRAWN		DATE		DATE	
FRACTIONAL ± 1/64		THREE PLACE DECIMAL ±.005		THREE PLACE DECIMAL ±.005		FINISHED SURFACE 316		4		10-12-99		D990238-A		10-12-99		1 OF 1	
ANGULAR 1/16°		FINISHED SURFACE 316		BENCH CONVEY ± .015		REMOVE ALL BURRS		REV		DESCRIPTION		ISSUE DESCRIPTION		DATE		DATE	
ANGULAR/CHAMFER ± BEND ±		TWO PLACE DECIMAL ±.01		REMOVE ALL BURRS				PARTIAL		HEAT TREAT		FINISH		REV		DATE	
DESCRIPTION		USED ON		NEXT ASSY: D990239													

400 CUSTOMER SERVICE OF TECHNOLOGY  
 MASSACHUSETTS INSTITUTE OF TECHNOLOGY  
 PLATE BEAM DUMP  
 ASSEMBLY  
 BSC4, ZK11MYAR4



PRELIMINARY

REF	QTY	PART or DRWG No.	DESCRIPTION	MATERIAL
8	4	U-C COMPONENTS #WFV-10	198 od x 354 od x .032 THK VENTED FL WASH	STNLS STL
7	4	McMaster-Carr #92196A245	#10-24 x .75 LONG SHCS	STNLS STL
6	4	U-C COMPONENTS #WFV-06	143 id x 287 od x .016 THK VENTED FL WASH	STNLS STL
5	4	McMaster-Carr #92196A144	#6-32 x 25 LONG SHCS	STNLS STL
4	1	D990218-B	CLAMP	-
3	4	D990207-B	CLAMP	-
2	2	D990240-B	RAIL	-
1	1	D990240-B	BACKPLATE	-

TOLERANCES:		UNLESS OTHERWISE SPECIFIED		DIMENSIONS ARE IN INCHES (mm)	
FRACTIONAL ± 1/64	THREE PLACE DECIMAL ± .005	FINISHED SURFACE RMS	BREAK CORNERS .005 ± .015	REMOVE ALL BURRS	
ANGULAR ± 1/2°					
ANGULAR ± BEND ±					
TWO PLACE DECIMAL ± .01					

REV	DESCRIPTION	DATE	BY	CHKD	APP'D	ISSUE DESCRIPTION
B	RELEASE	E990210	Conley	S-28-99		
A	RELEASE	E990210			KAB01	S-12-99

DRWG NO.	DESCRIPTION	MATERIAL	HEAT TREAT	FINISH	USED DRW	NEXT ASSY: D990230
	REFERENCE DRAWINGS					

DRWG NO.	DESCRIPTION	SCALE	DATE	BY	CHKD	APP'D	ISSUE DESCRIPTION

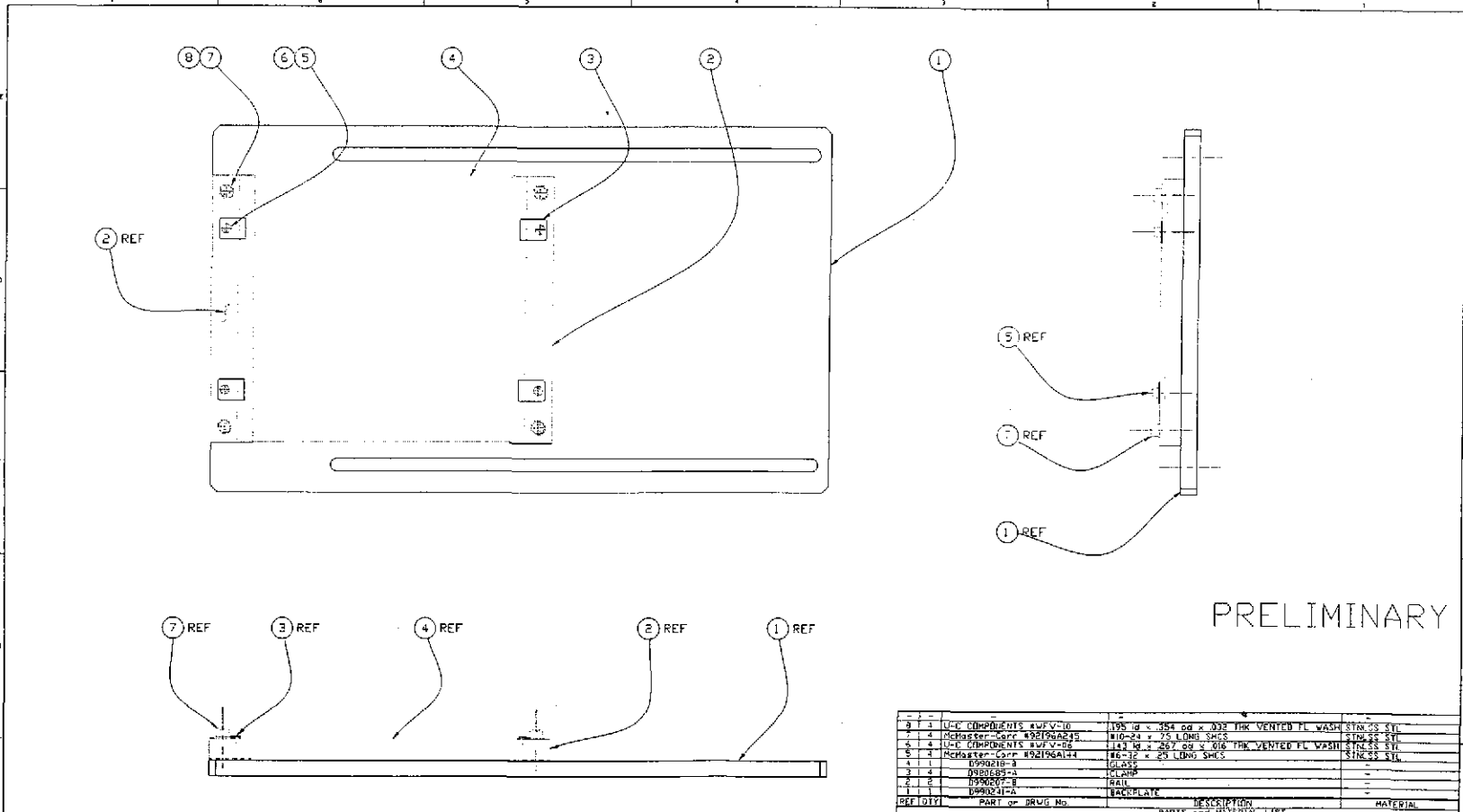
  

DRWG NO.	DESCRIPTION	SCALE	DATE	BY	CHKD	APP'D	ISSUE DESCRIPTION
D990238-B	PLATE BEAM DUMP ASSEMBLY						

MIT CALIFORNIA INSTITUTE OF TECHNOLOGY MASSACHUSETTS INSTITUTE OF TECHNOLOGY

PLATE BEAM DUMP ASSEMBLY BSC4, 2KITMXAR4, 2KITMYAR4

DRWG NO: D990238-B SHEET 1 OF 1



PRELIMINARY

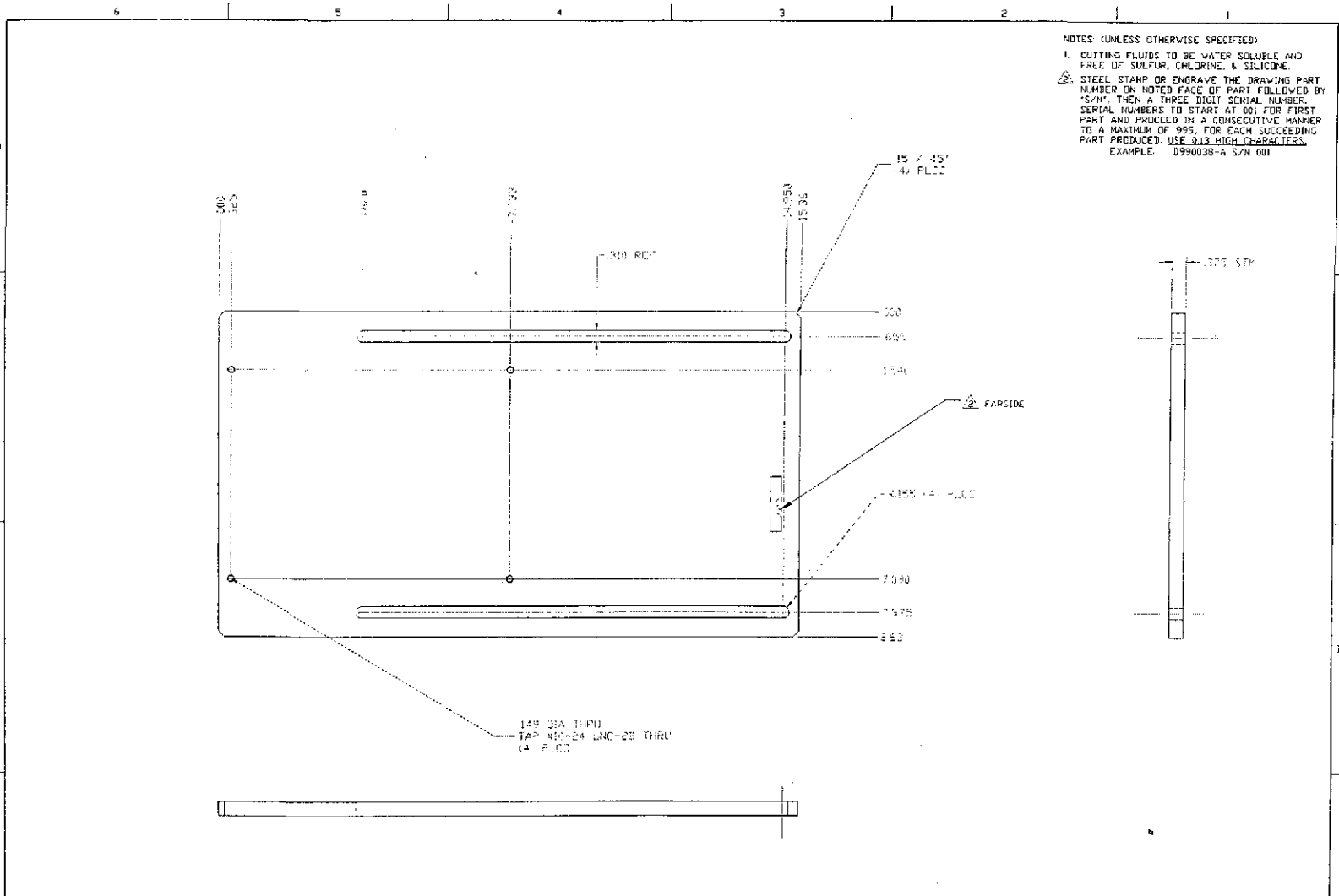
REF ID	PART or DRWG No.	DESCRIPTION	MATERIAL
2	U-C CHANNELS 4X1/2X10	105 lb x .064 od x .032 THK VENTED FL WASH	SINCESS STL
3	McMaster-Carr #9219A245	#10-24 x .75 L0W SHCS	SINCESS STL
4	U-C CHANNELS 4X1/2X10	143 lb x .067 od x .018 THK VENTED FL WASH	SINCESS STL
5	McMaster-Carr #9219A144	#6-18 x .25 L0W SHCS	SINCESS STL
6	D990210-A	GLASS	-
7	D990215-A	CLAMP	-
8	D990216-A	TRAIL	-
1	D990241-A	BACKPLATE	-

UNLESS OTHERWISE SPECIFIED DIMENSIONS ARE IN INCHES (mm)				PARTS and SERIAL LIST			100 GENERAL PURPOSE OF TECHNOLOGY INDEPENDENT SERVICE OF TECHNOLOGY	
							PLATE BEAM DUMP ASSEMBLY BSC4, 2KITMKAR4	
TO FINISH:	FRACTIONAL & 1/32	THREE PLACE DECIMAL .003	FINISHED SURFACE RING	RELEAS	E990210	-	-	DATE
ANGULAR & 1/32		FINISH SURFACE RING	FINISH	DESCRIPTION	REV	APPROV	CHKCD	DRAWN
ANGULAR & 1/32		REMOVE ALL BURRS						
TWO PLACE DECIMAL .01								
SYG NO.	DESCRIPTION	MATERIAL	HEAT TREAT.	FINISH	REV	ISSUE DESCRIPTION	DATE	REV
	REFERENCE DRAWINGS	USED ON	HEAT TREAT.	FINISH				

D990239-A

1 OF 1

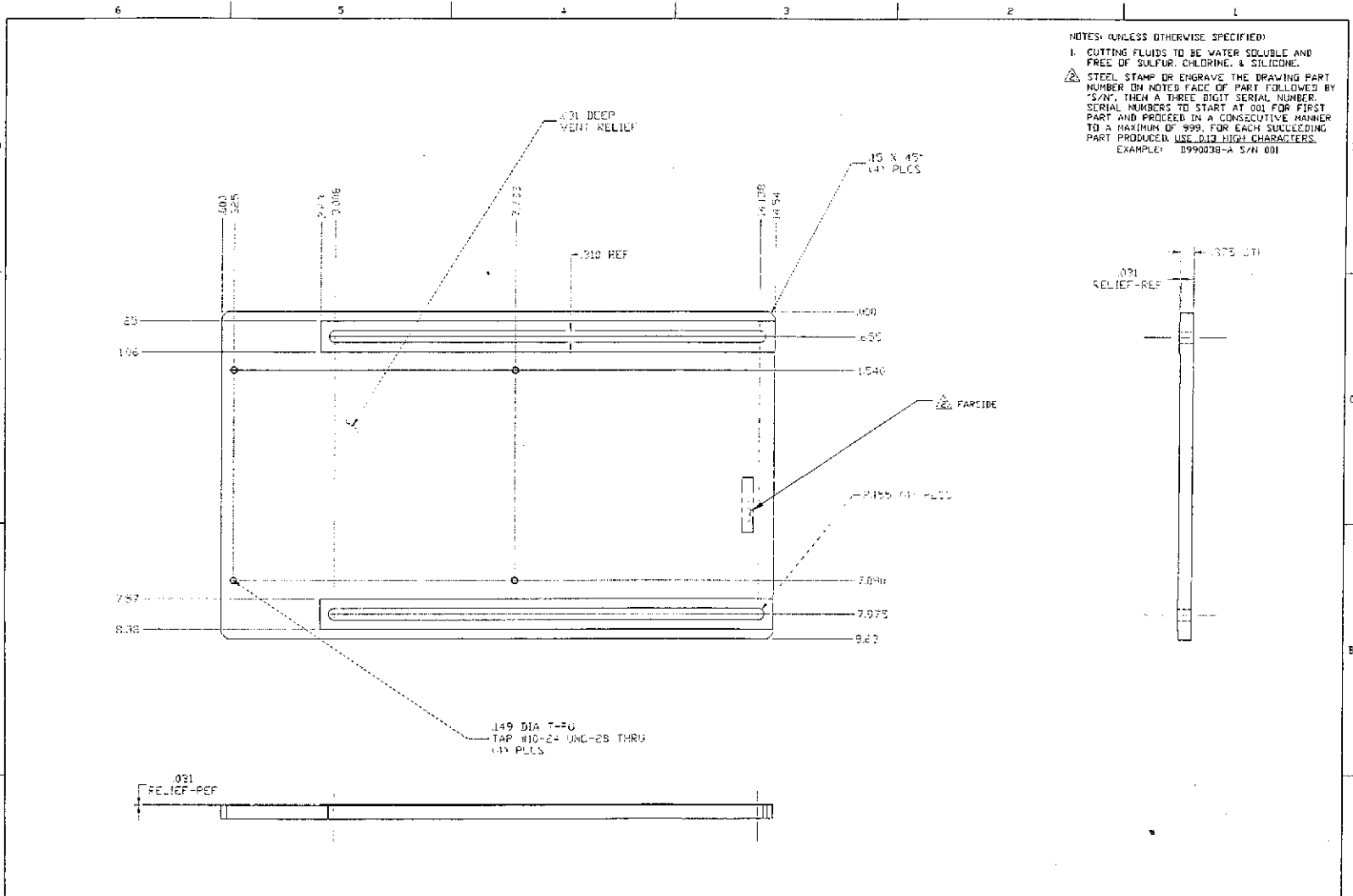




NOTES: (UNLESS OTHERWISE SPECIFIED)  
 1. CUTTING FLUIDS TO BE WATER SOLUBLE AND FREE OF SULFUR, CHLORINE, & SILICONE.  
 2. STEEL STAMP OR ENGRAVE THE DRAWING PART NUMBER ON NOTED FACE OF PART FOLLOWED BY 'S/N', THEN A THREE DIGIT SERIAL NUMBER. SERIAL NUMBERS TO START AT 001 FOR FIRST PART AND PROCEED IN A CONSECUTIVE MANNER TO A MAXIMUM OF 999, FOR EACH SUCCEEDING PART PRODUCED. USE 013 HIGH CHARACTERISTICS.  
 EXAMPLE: 0990038-A S/N 001

UNLESS OTHERWISE SPECIFIED DIMENSIONS ARE IN FEET (IN)				UCI CALIFORNIA INSTITUTE OF TECHNOLOGY MASSACHUSETTS INSTITUTE OF TECHNOLOGY			
TOLERANCES: FRACTIONAL ± 0.004 ANGULAR ± 0.2° HOLE POSITION ± 0.008 & TWO PLACE DECIMAL ± 0.008		THREE PLACE DECIMAL ± 0.003 FINISHED SURFACE ± 0.015 BREAK CORNERS 0.05 - 0.08 REMOVE ALL BURRS		RELEASE E990210 - - - KARDT 5-13-99		CAD FILE PL_BDM*_15-2PL.dwg SHEET C D990240-A	
MATERIAL: 316 THICK FIVE ANGLE-TOE NANOFORM PLATE		HEAT TREAT: NEXT ASSY: D990238		FINISH: A DESCRIPTION PLATE BEAM DUMP BACKPLATE		SCALE NPS SHEET 1 OF 1	





NOTES: (UNLESS OTHERWISE SPECIFIED)  
 1. CUTTING FLUIDS TO BE WATER SOLUBLE AND FREE OF SULFUR, CHLORINE, & SILICONE.  
 2. STEEL STAMP OR ENGRAVE THE DRAWING PART NUMBER ON NOTED FACE OF PART FOLLOWED BY "S/N", THEN A THREE DIGIT SERIAL NUMBER. SERIAL NUMBERS TO START AT 001 FOR FIRST PART AND PROCEED IN A CONSECUTIVE MANNER TO A MAXIMUM OF 999. FOR EACH SUCCEEDING PART PRODUCED, USE 012 HIGH CHARACTERS. EXAMPLE: D99020-A S/N 001

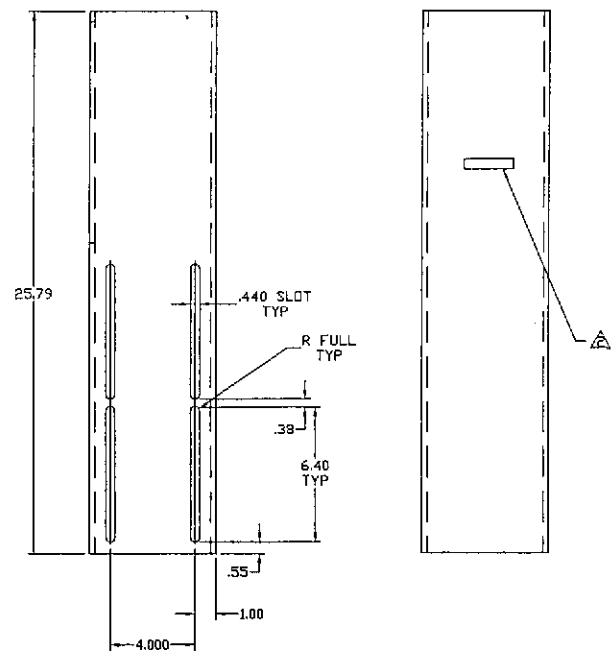
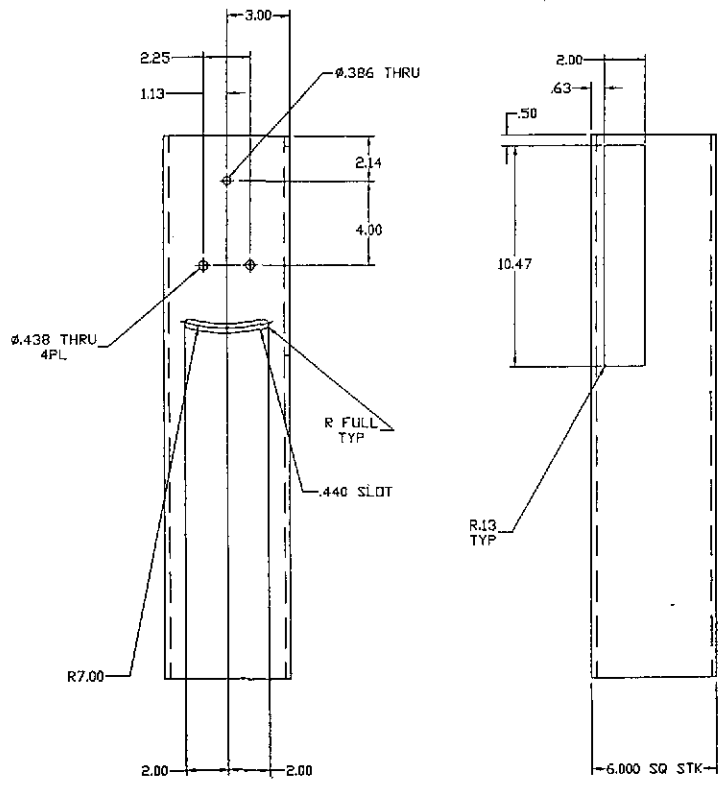
UNLESS OTHERWISE SPECIFIED DIMENSIONS ARE IN FEET INCHES		MATERIAL: 316 T304 ALUMINUM ALLOY		HEAT TREAT: NONE		FINISH: BROOM FINISH		RELEASE		E99020		XABDT		5-13-59	
TOLERANCES: FRACTIONAL: ± 1/32 ANGULAR: ± 1/2° THREE PLACE DECIMAL: ± .003 FIVE PLACE DECIMAL: ± .0001		MATERIAL: 316 T304 ALUMINUM ALLOY		HEAT TREAT: NONE		FINISH: BROOM FINISH		REV		ISSUE DESCRIPTION		SCALE		1 OF 1	
DRAWING: REFERENCE DRAWINGS		USED ON		NEXT ASSY: D99020											

MIT CALIFORNIA INSTITUTE OF TECHNOLOGY MASSACHUSETTS INSTITUTE OF TECHNOLOGY

PLATE BEAM DUMP 14-5 BACKPLATE

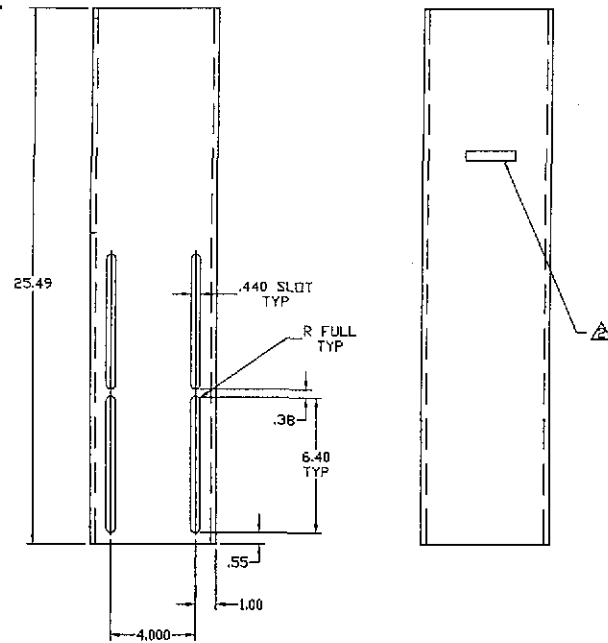
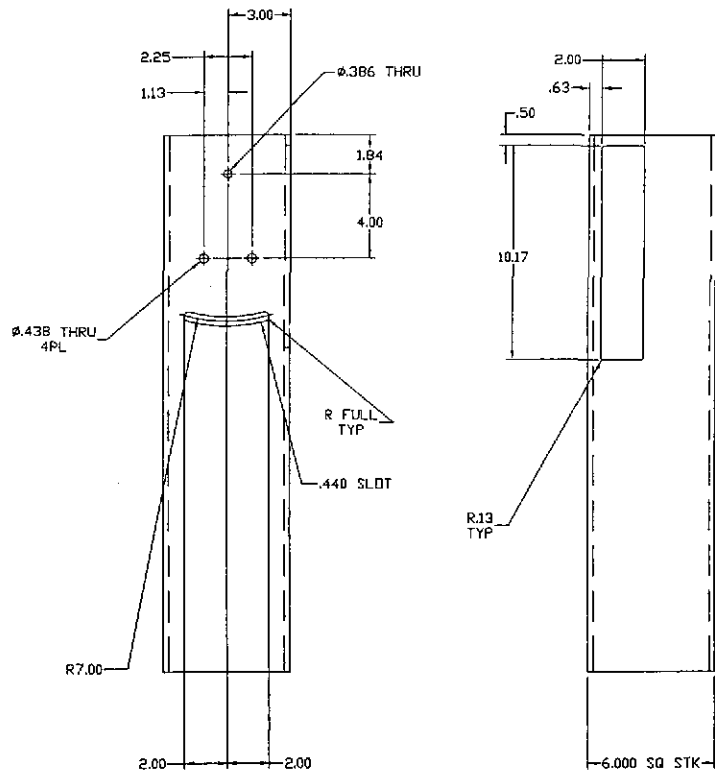
DATE FILE: PL\_BDMP\_14-5\_PL\_001  
 SIZE: C  
 ENG. NO.: D990241-A  
 SHEET: 1 OF 1

NOTES: (UNLESS OTHERWISE SPECIFIED)  
 1. CUTTING FLUIDS TO BE WATER SOLUBLE AND FREE OF SULFUR, CHLORINE, & SILICONE.  
 ⚠ STEEL STAMP OR ENGRAVE THE DRAWING PART NUMBER ON NOTED FACE OF PART FOLLOWED BY "S/N", THEN A THREE DIGIT SERIAL NUMBER. SERIAL NUMBERS TO START AT 001 FOR FIRST PART AND PRICED IN A CONSECUTIVE MANNER TO A MAXIMUM OF 999, FOR EACH SUCCEEDING PART PRODUCED. USE 0.13 HIGH CHARACTERS. EXAMPLE: D99003B-A S/N 001



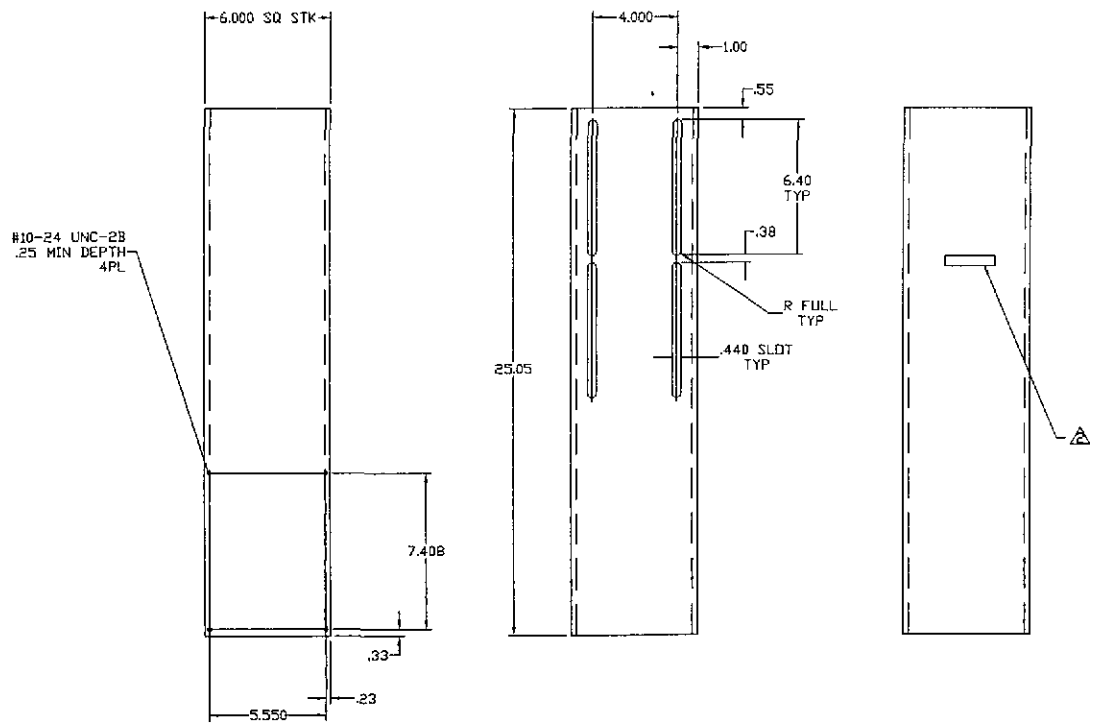
		UNLESS OTHERWISE SPECIFIED DIMENSIONS ARE IN INCHES						MIT CALIFORNIA INSTITUTE OF TECHNOLOGY MASSACHUSETTS INSTITUTE OF TECHNOLOGY	
		TOLERANCES: FRACTIONAL & ANGULAR & ANGULAR APPROX & BEND & TWO PLACE DECIMAL & 0.01	THREE PLACE DECIMAL & 0.005 FINISHED SURFACE RNS BREAK CORNERS IN QTY 0.05-0.10 REMOVE ALL BURRS					CAVITY BEAM DUMP HOUSING TUBE, BSC4, 2K1THXARI, 2K1THYARI, 2KRMHR.3	
MATERIAL: 6061-T6 ALU TUBING 6" SQ. 1/4" WALL		HEAT TREAT:	FINISH:	A	DCN E994210	Conkey	5-18-99	ISS FILE	SEE SPEC. NO.
DWG. NO.	DESCRIPTION	USED ON	NEXT ASSY: D990041	REV	DESCRIPTION	APPR'D	CHECK	DRWN	DATE
REFERENCE DRAWINGS				ISSUE DESCRIPTION				SCALE	NTS
								B	D990252-A
									1 OF 1

NOTES: (UNLESS OTHERWISE SPECIFIED)  
 1. CUTTING FLUIDS TO BE WATER SOLUBLE AND FREE OF SULFUR, CHLORINE, & SILICONE.  
 ⚠ STEEL STAMP OR ENGRAVE THE DRAWING PART NUMBER ON NOTED FACE OF PART FOLLOWED BY 'S/N', THEN A THREE DIGIT SERIAL NUMBER. SERIAL NUMBERS TO START AT 001 FOR FIRST PART AND PROCEED IN A CONSECUTIVE MANNER TO A MAXIMUM OF 999, FOR EACH SUCCEEDING PART PRODUCED. USE 0.13 HIGH CHARACTERS. EXAMPLE: D990252-A S/N 001

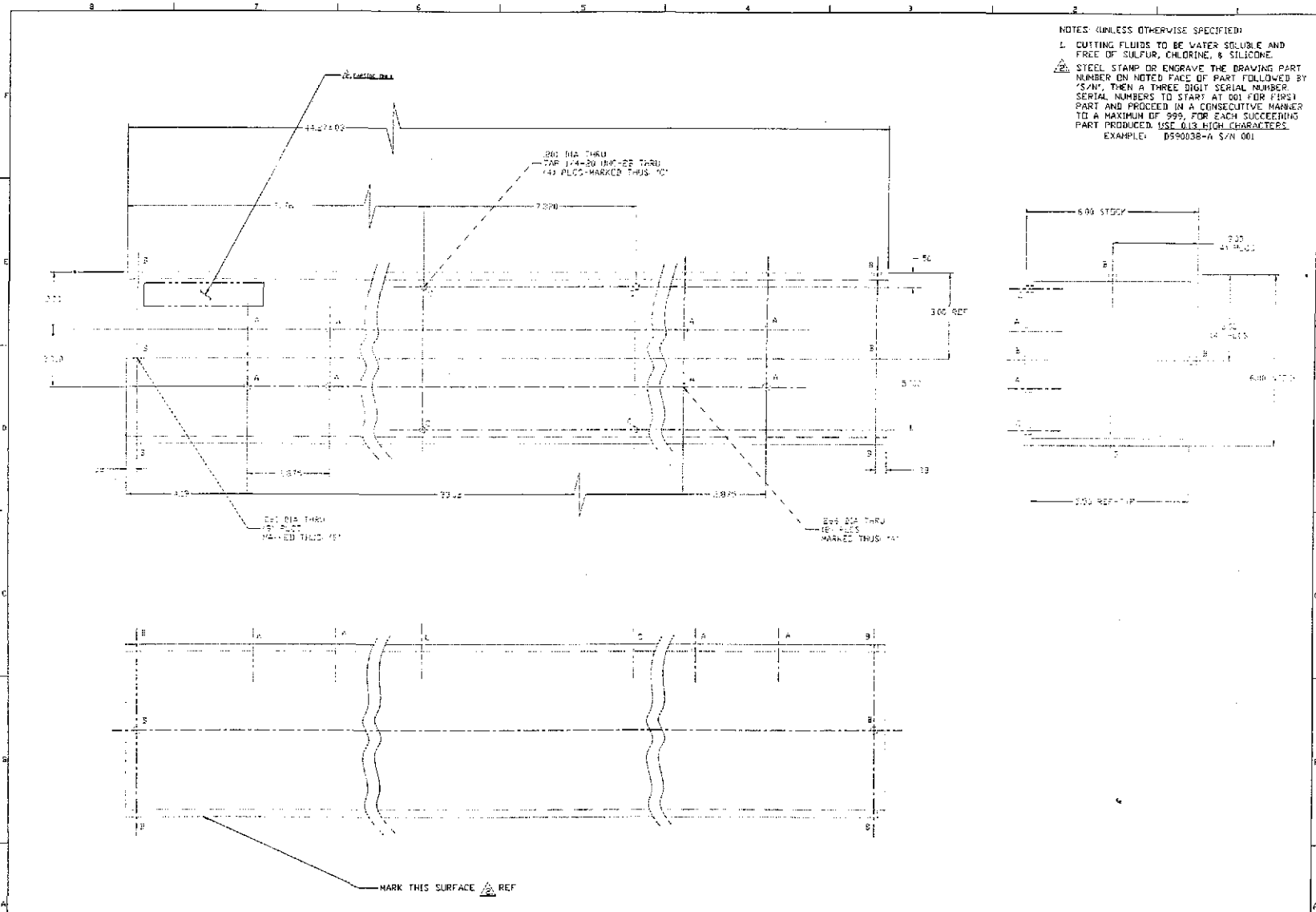


		UNLESS OTHERWISE SPECIFIED DIMENSIONS ARE IN INCHES				LIGO CALIFORNIA INSTITUTE OF TECHNOLOGY MASSACHUSETTS INSTITUTE OF TECHNOLOGY	
		TOLERANCES: FRACTIONAL ± ANGULAR ± HOLE POSITION ± BONE ± TWO PLACE DECIMAL AND	THREE PLACE DECIMAL AND FINISHED SURFACE, RING BREAK CORNERS IN .005-.010 REMOVE ALL BURRS			CAVITY BEAM DUMP HOUSING TUBE BSC4, 2KITMXARI, 2KITMYARI, 2KRHHRS BSC2, 4KITMXARI, 4KITMYARI	
		MATERIAL: 6061-T6 ALU TUBING .075-.147 WALL	HEAT TREAT:			DATE FILED: 5-25-99	ISSUE NO: D990252-B
DWG. NO.	DESCRIPTION	USED ON	NEXT ASSY: D99041	REV	DESCRIPTION	APPROV'D	CHECK
REFERENCE DRAWINGS				A	DEN E990210	Conley	5-25-99
				A	DEN E990210	Conley	5-18-99
				REV	DESCRIPTION	DATE	SCALE
					ISSUE DESCRIPTION		1 OF 1

NOTES: (UNLESS OTHERWISE SPECIFIED)  
 1. CUTTING FLUIDS TO BE WATER SOLUBLE AND FREE OF SULFUR, CHLORINE, & SILICONE.  
 ⚠ STEEL STAMP OR ENGRAVE THE DRAWING PART NUMBER ON NOTED FACE OF PART FOLLOWED BY 'S/N', THEN A THREE DIGIT SERIAL NUMBER, SERIAL NUMBERS TO START AT 001 FOR FIRST PART AND PROCEED IN A CONSECUTIVE MANNER TO A MAXIMUM OF 999, FOR EACH SUCCEEDING PART PRODUCED. USE .013 HIGH CHARACTERS.  
 EXAMPLE: D990253-A S/N 001



		UNLESS OTHERWISE SPECIFIED DIMENSIONS ARE IN INCHES						LIGO CALIFORNIA INSTITUTE OF TECHNOLOGY MASSACHUSETTS INSTITUTE OF TECHNOLOGY	
		TOLERANCES: FRACTIONAL ± ANGULAR ± ANGULARWASH & BOND ± TVD PLACE DECIMAL ±.01	THREE PLACE DECIMAL .005 FINISHED SURFACE RNS BREAK CORNERS IN .015-.010 REMOVE ALL BURRS					PLATE BEAM DUMP EXTENSION TUBE, BSC2, 4K1THYAR4, 4K1THYAR4 BSC4, 2KB5HR3P-2	
		MATERIAL: 6061-T6 ALU TUBING Ø .50, 1/4" WALL	HEAT TREAT:	FINISH:	A	DCH E3982E	DATE:	5-18-99	SCALE: NTS
DWG. NO.	DESCRIPTION	USER OR	NEXT ASSY: D99041	REV	DESCRIPTION	ISSUE DESCRIPTION	APPR'D	CHECK	DATE
	REFERENCE DRAWINGS								



NOTES: (UNLESS OTHERWISE SPECIFIED)  
 1. CUTTING FLUIDS TO BE WATER SOLUBLE AND FREE OF SULFUR, CHLORINE, & SILICONE.  
 2. STEEL STAMP OR ENGRAVE THE DRAWING PART NUMBER ON NOTED FACE OF PART FOLLOWED BY 'S/N', THEN A THREE DIGIT SERIAL NUMBER. SERIAL NUMBERS TO START AT 001 FOR FIRST PART AND PROCEED IN A CONSECUTIVE MANNER TO A MAXIMUM OF 999, FOR EACH SUCCEEDING PART PRODUCED. USE 0.13 HIGH CHARACTERS. EXAMPLE: D590038-A S/N 001

		UNLESS OTHERWISE SPECIFIED DIMENSIONS ARE IN INCHES (MM)								1470 CUSTOM SERVICE CENTER MILWAUKEE, WISCONSIN 53211		
		TEMPERED FRACTIONAL & 1/64 ANGULAR & 1/32" ANGULAR BEND & TWO PLACE DECIMAL R/R		THREE PLACE DECIMAL R/R FINISHED SURFACE AND BREAK DIMENSIONS - 4/16 REMOVE ALL BURRS						BEAM DUMP FLEX HINGE, HUB, QUINTARY		
		MATERIAL: 870C UNS-16 GRADE ALUMINUM TUBING 6.00 20.00 6.30 20.10		HEAT TREAT: T3		FINISH:				DATE: 2-24-99		BY: [Signature]
REV		DESCRIPTION		RELEASE		EFFECTIVE DATE		APPROV'D		DATE		
A				RELEASE				KABGT		2-24-99		
REV		DESCRIPTION		ISSUE DESCRIPTION		REV NUMBER		CHECK		DATE		
REFERENCE DRAWING		DATE		NEXT ASSY. REQUIRED						D590035-A		

