

T020178-00-E HEPI Actuator # 2 Assembly Oct18 2002

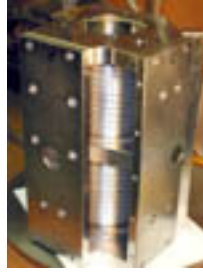
J Kern



[1 DSCN0028.jpg](#)



[1 DSCN0029.jpg](#)



[1 DSCN0030.jpg](#)



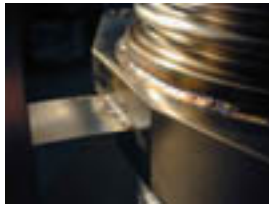
[2nd Back of weld...](#)



[2nd Bellows to A...](#)



[2nd Bellows Weld...](#)



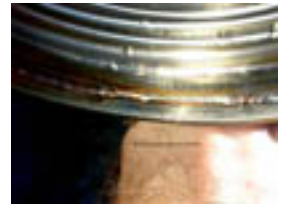
[2nd Flex Weld.jpg](#)



[3 New Weld.jpg](#)



[Questionable Bel...](#)



[Questionable Bel...](#)

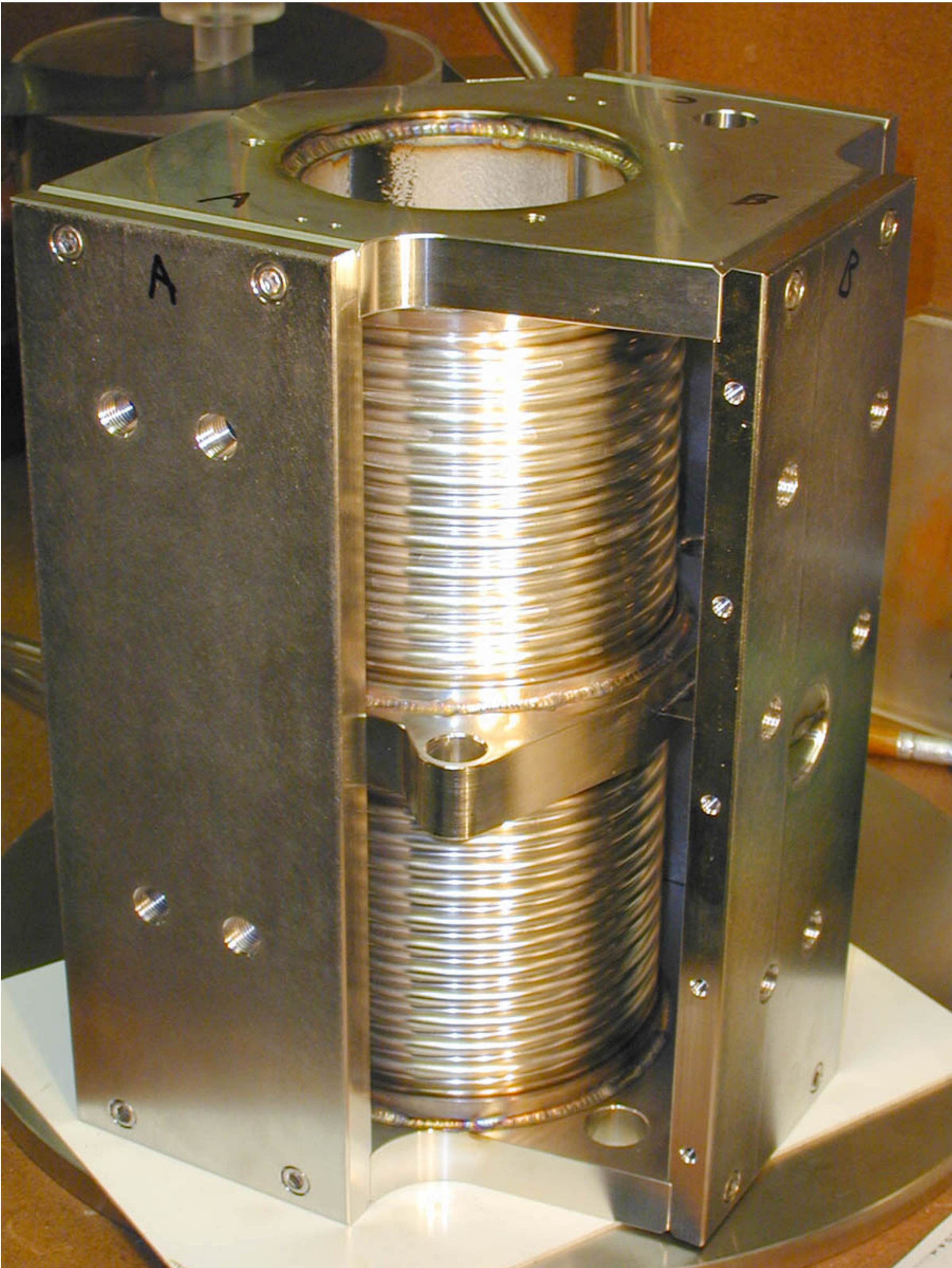
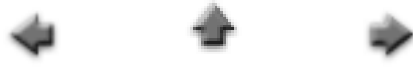
Actuator # 2 Assembly Oct18 / 1 DSCN0028

10/18/2002



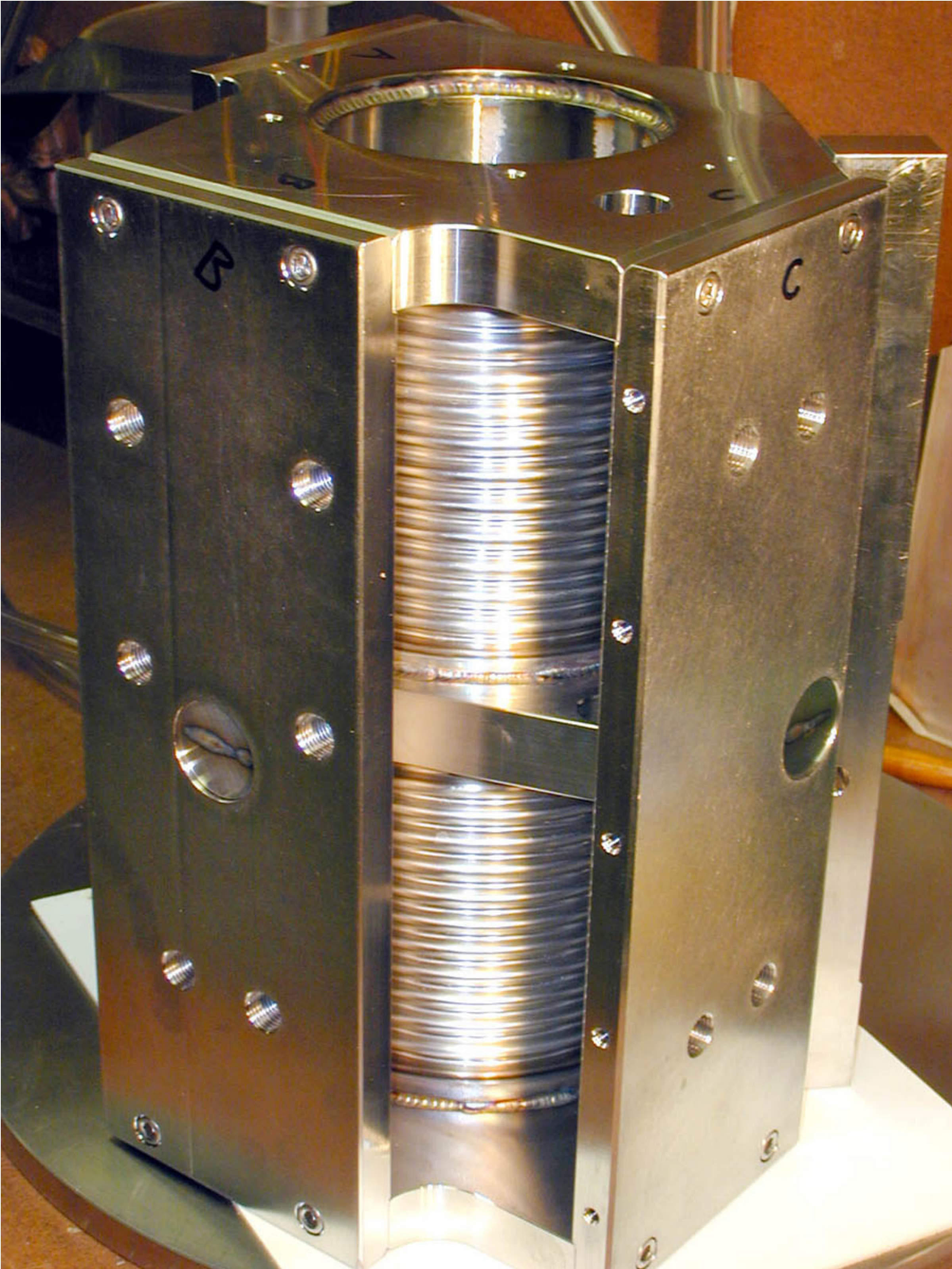
Actuator # 2 Assembly Oct18 / 1 DSCN0029

10/18/2002



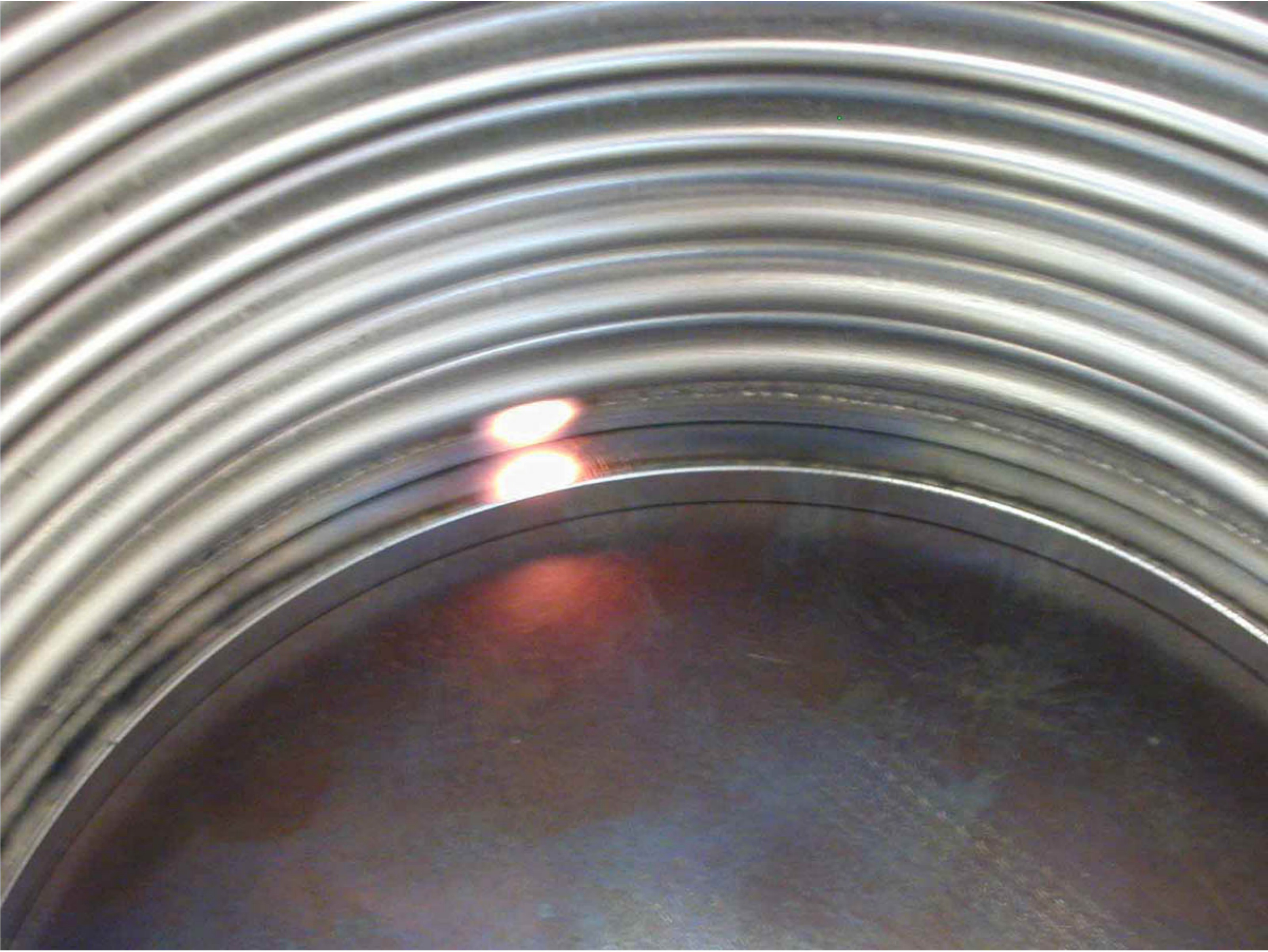
Actuator # 2 Assembly Oct18 / 1 DSCN0030

10/18/2002



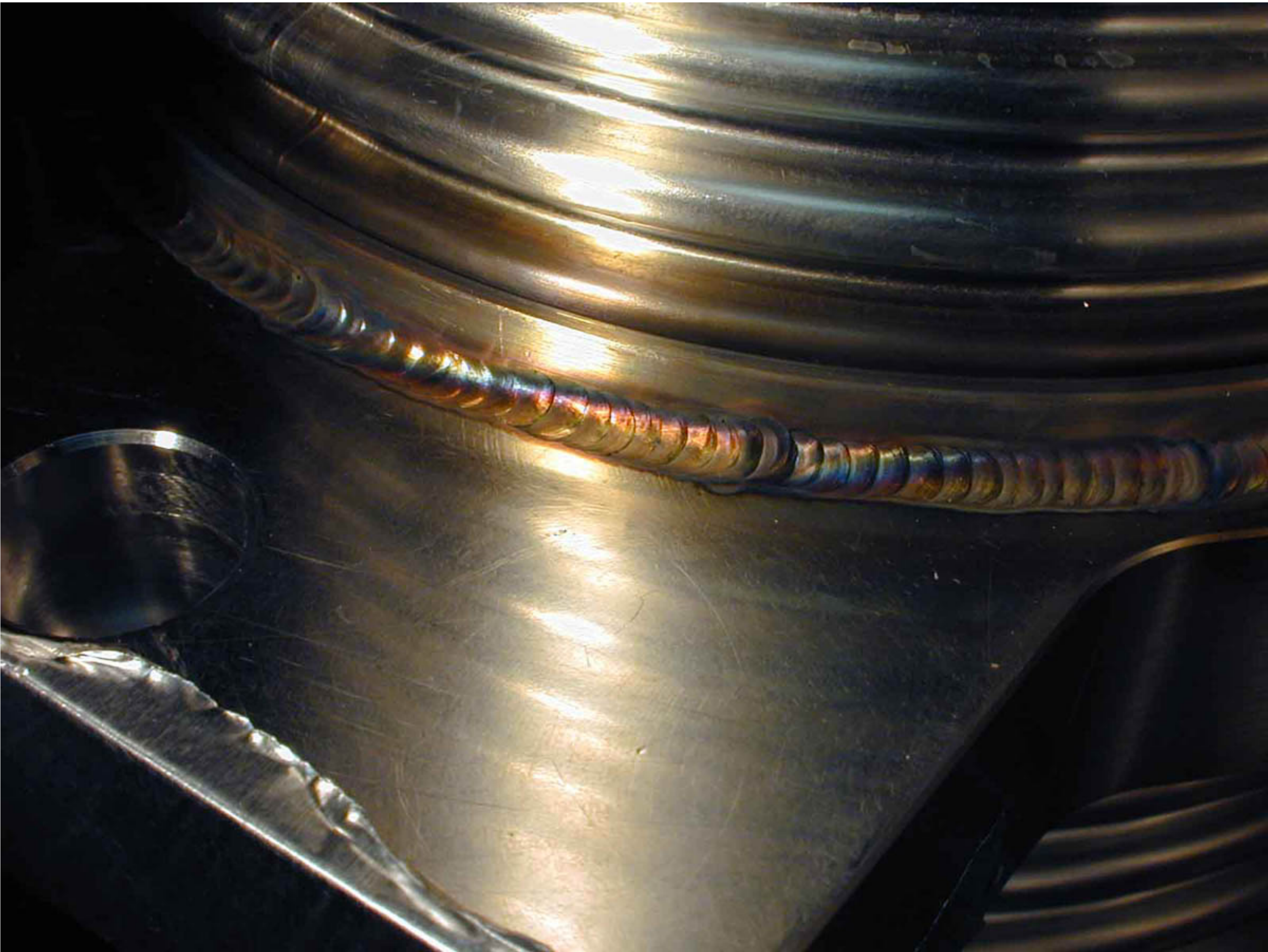
Actuator # 2 Assembly Oct18 / 2nd Back of weld

10/18/2002



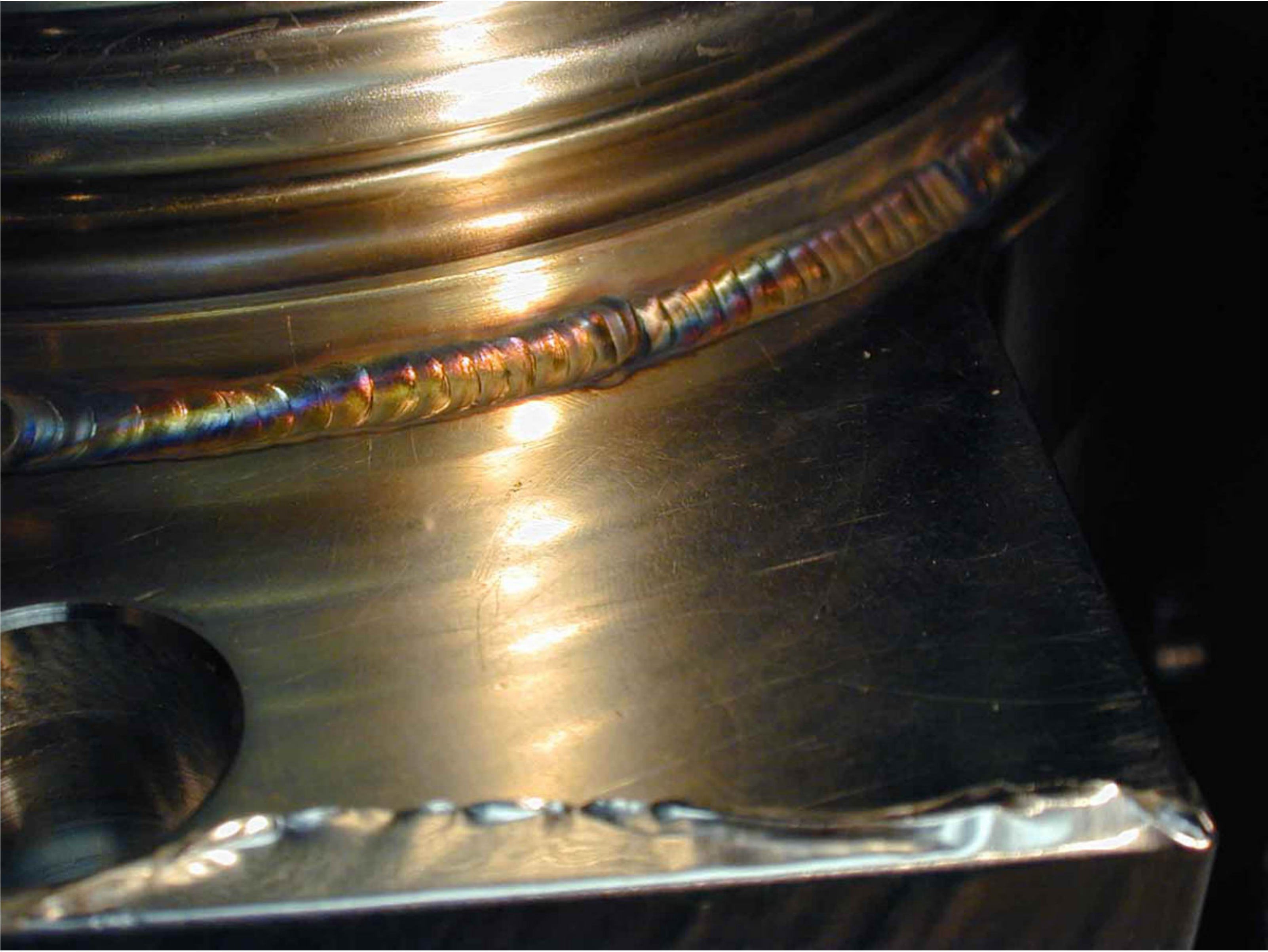
**Actuator # 2 Assembly Oct18 / 2nd Bellows to Act.
Weld**

10/18/2002



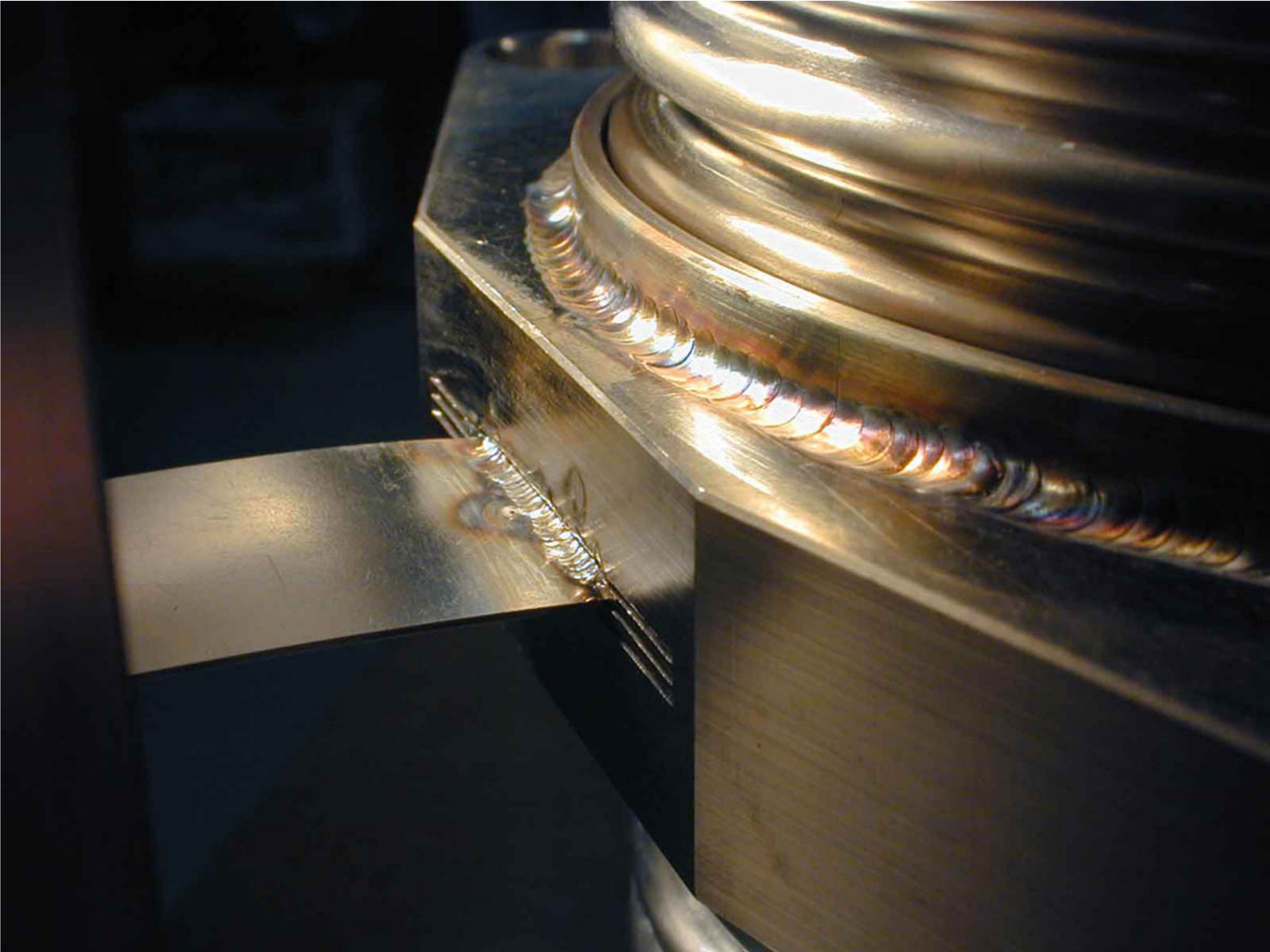
Actuator # 2 Assembly Oct18 / 2nd Bellows Weld

10/18/2002



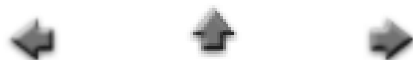
Actuator # 2 Assembly Oct18 / 2nd Flex Weld

10/18/2002



Actuator # 2 Assembly Oct18 / 3 New Weld

10/18/2002



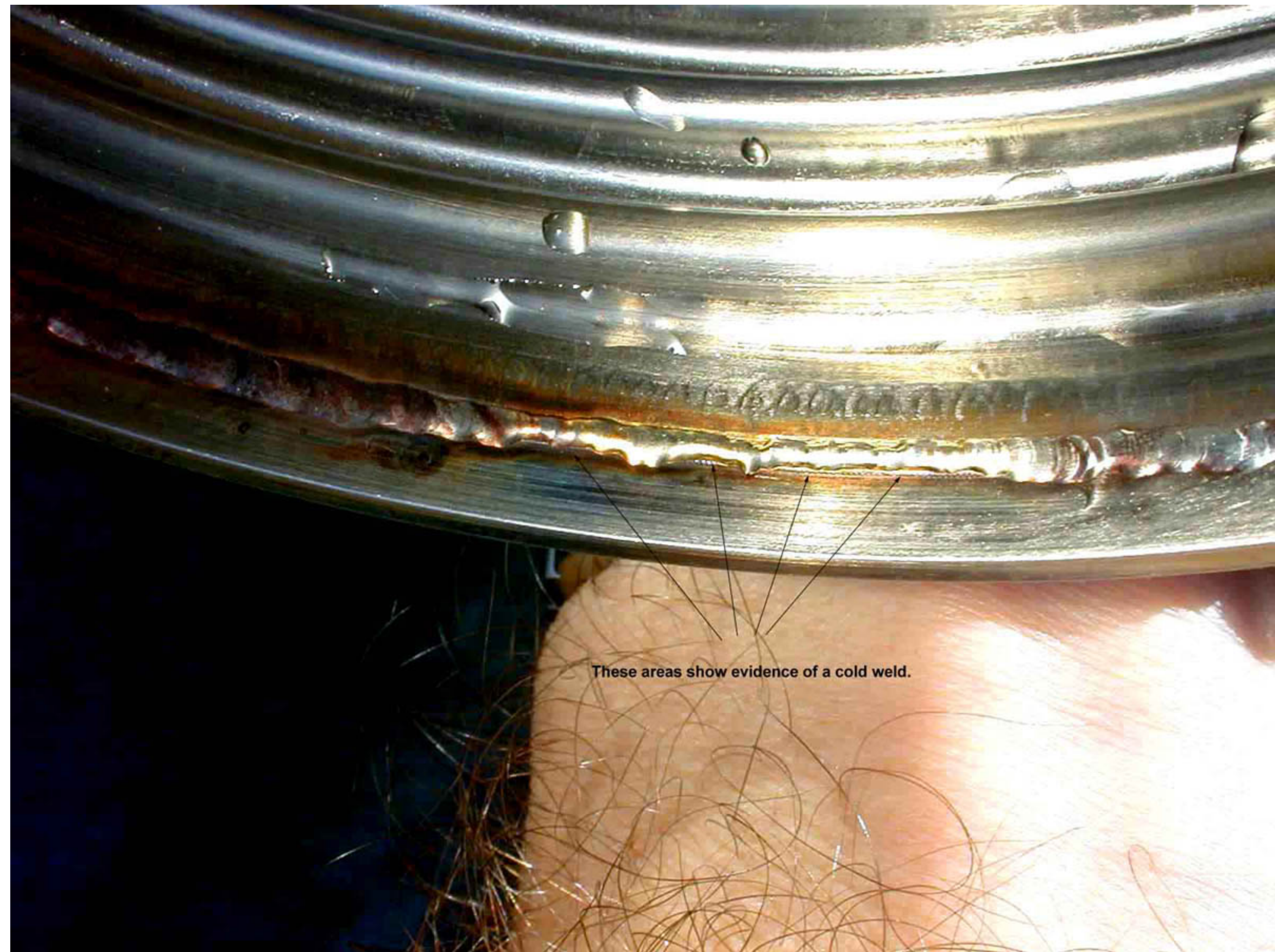
**Actuator # 2 Assembly Oct18 / Questionable
Bellows Weld**

10/18/2002



**Actuator # 2 Assembly Oct18 / Questionable
Bellows Weld2**

10/18/2002



These areas show evidence of a cold weld.