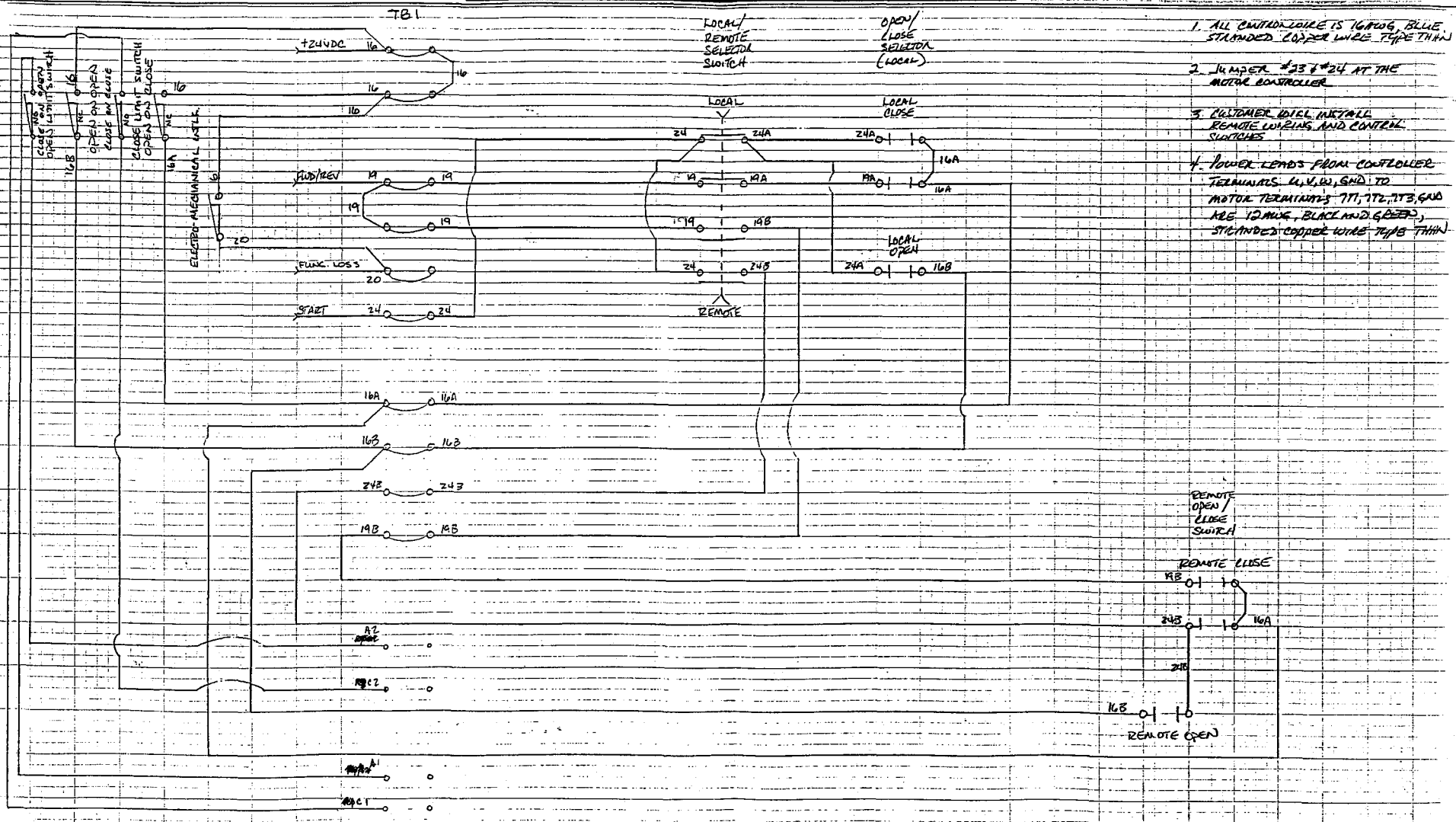


All-purpose Grid

L190 VALVE CONTROL CKT.

ELECTRIC DRIVE

J.B. TURNER SCALE: 1/4"



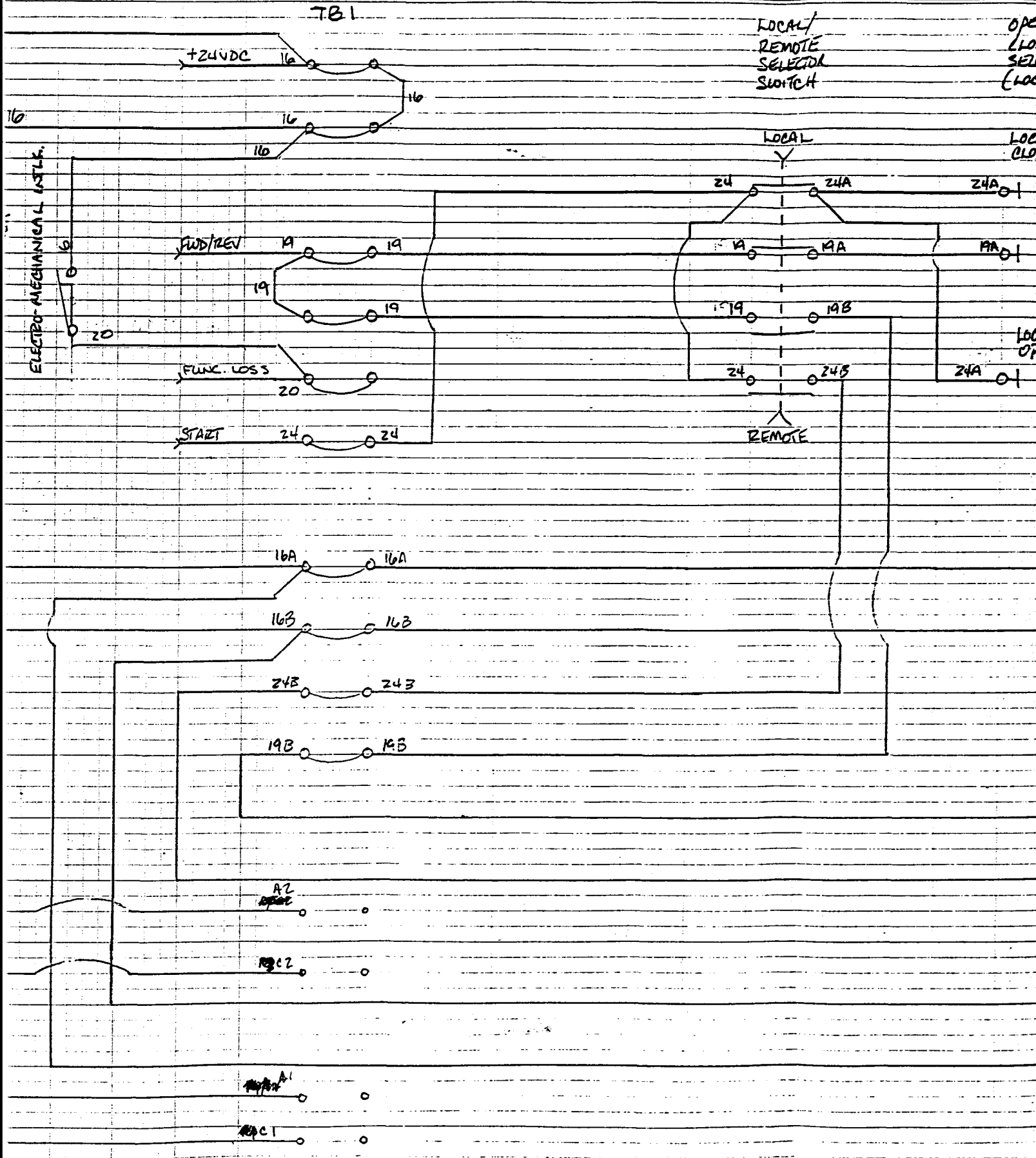
1. ALL CONTROL WIRE IS 16 AWG, BLUE STANDED COPPER WIRE TYPE THHN
2. JUMPER #36 #24 AT THE MOTOR CONTROLLER
3. MOTORER WILL INSTALL REMOTE WIRING AND CONTROL SWITCHES
4. LOWER LEADS FROM CONTROLLER TERMINALS U, V, W, GND TO MOTOR TERMINALS T11, T12, T13, GND ARE 12 AWG, BLACK AND GREEN, STANDED COPPER WIRE TYPE THHN

L190-T1960143-00-C

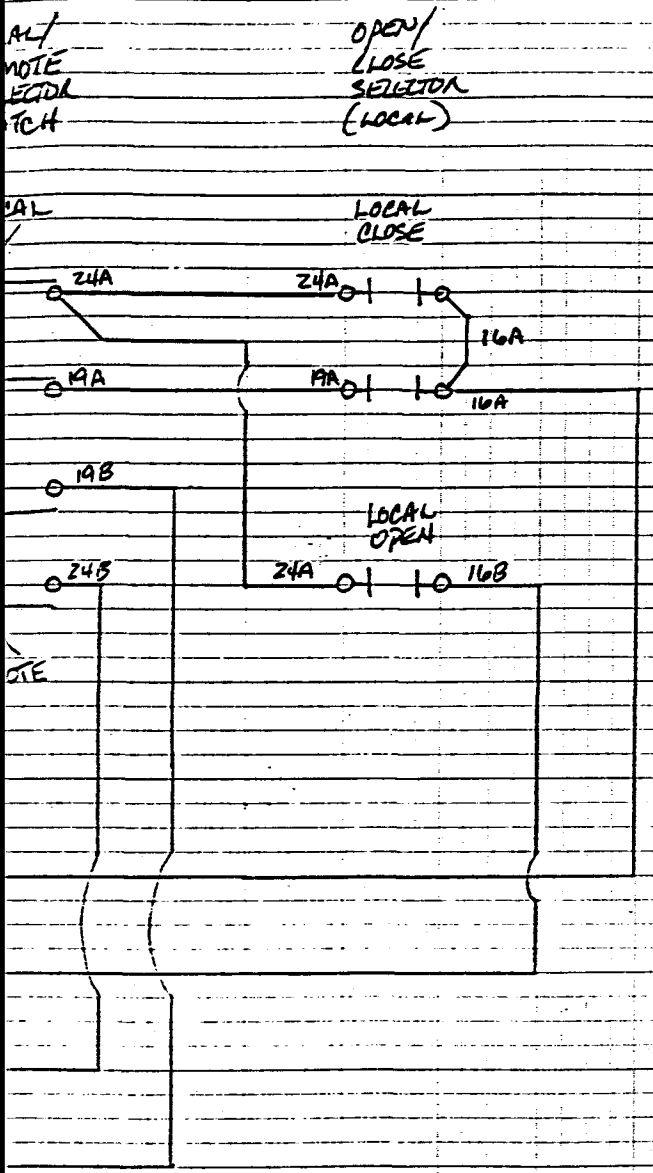
Purpose Grid

L160 VALVE CONTROL CKT. ELECTRIC DRIVE

JB. Tu



CKT.
 JB. Turpin SCALE: 1/2" =



1. ALL CONTROL WIRE IS 16AWG, BLUE, STRANDED COPPER WIRE 7/48 THIN
2. JUMPER #23 & #24 AT THE MOTOR CONTROLLER
3. CUSTOMER WILL INSTALL REMOTE WIRING AND CONTROL SWITCHES
4. POWER LEADS FROM CONTROLLER TERMINALS U, V, W, AND TO MOTOR TERMINALS 7T1, 7T2, 7T3, AND ARE 12AWG, BLACK AND GREEN, STRANDED COPPER WIRE 7/48 THIN

