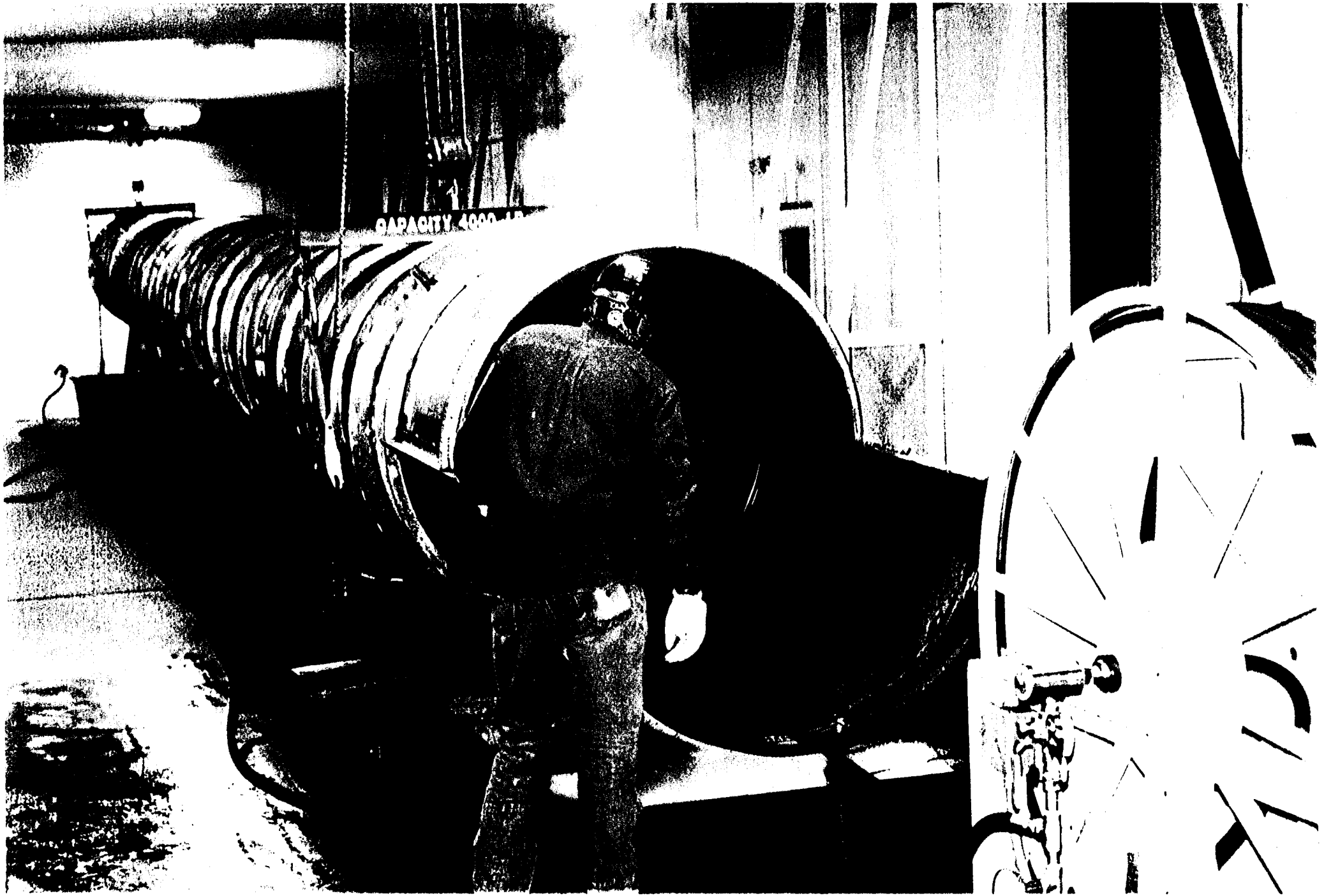


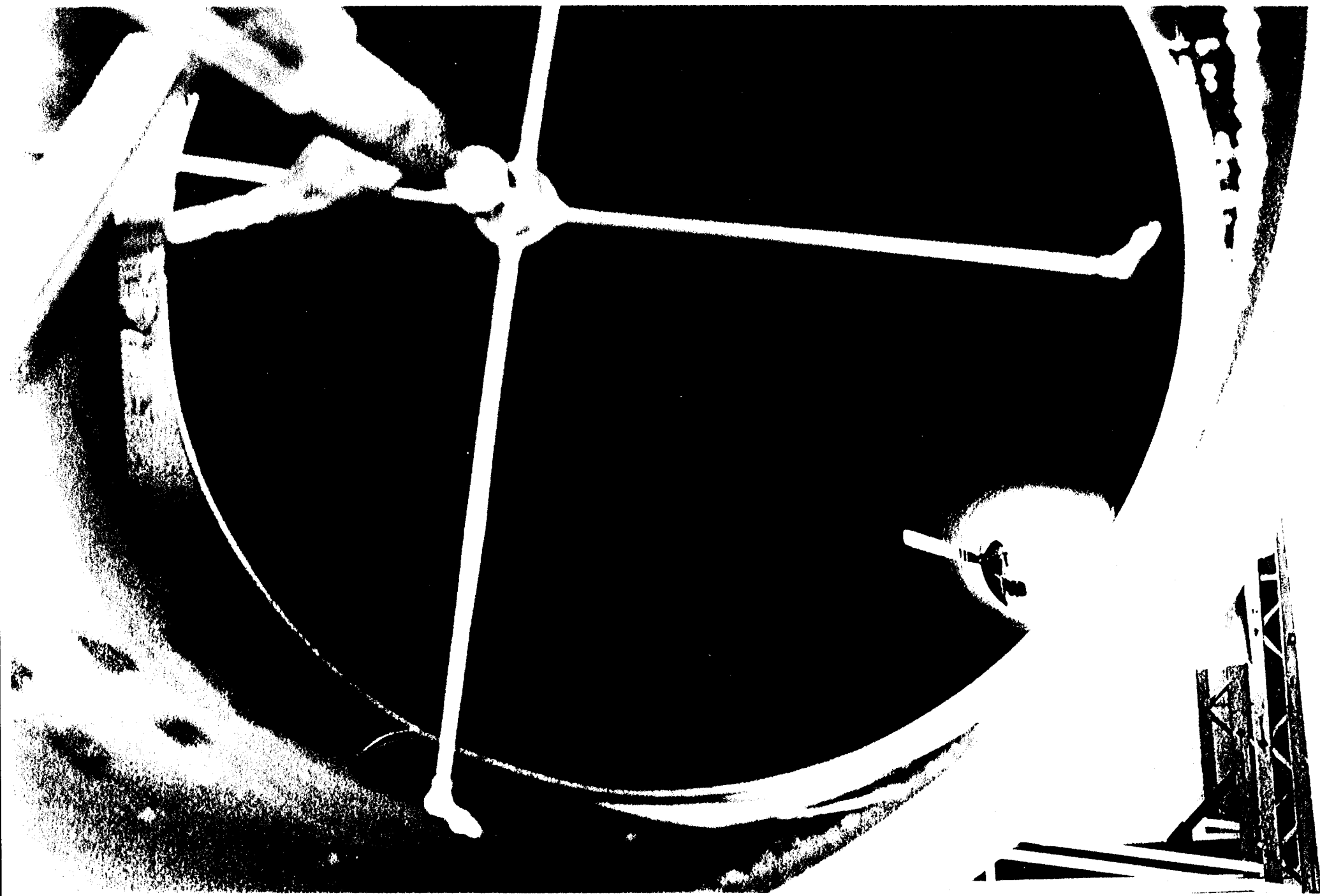
# Beam Tube Installation

- Cleaning tube sections
- Shipping tube sections
- Fitup & welding girth seams
- Leak checking girth seams
- Baffle installation
- Support installation
- Alignment



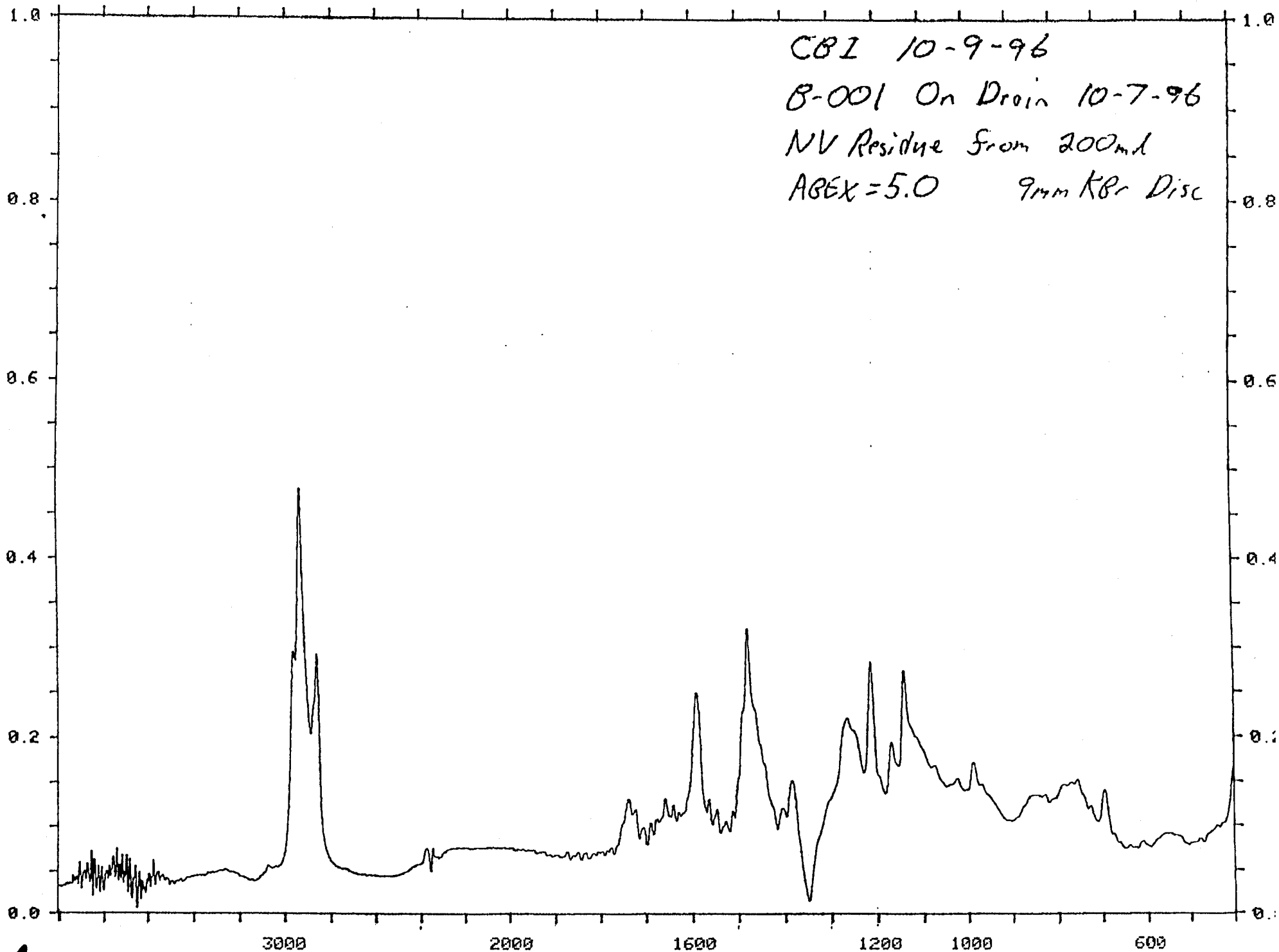
CAPACITY 4000 LB

30



30

OCT-09-96 WED 15:59 RY FITZSIMMONS & ASSOC 708 251 0811 P.04

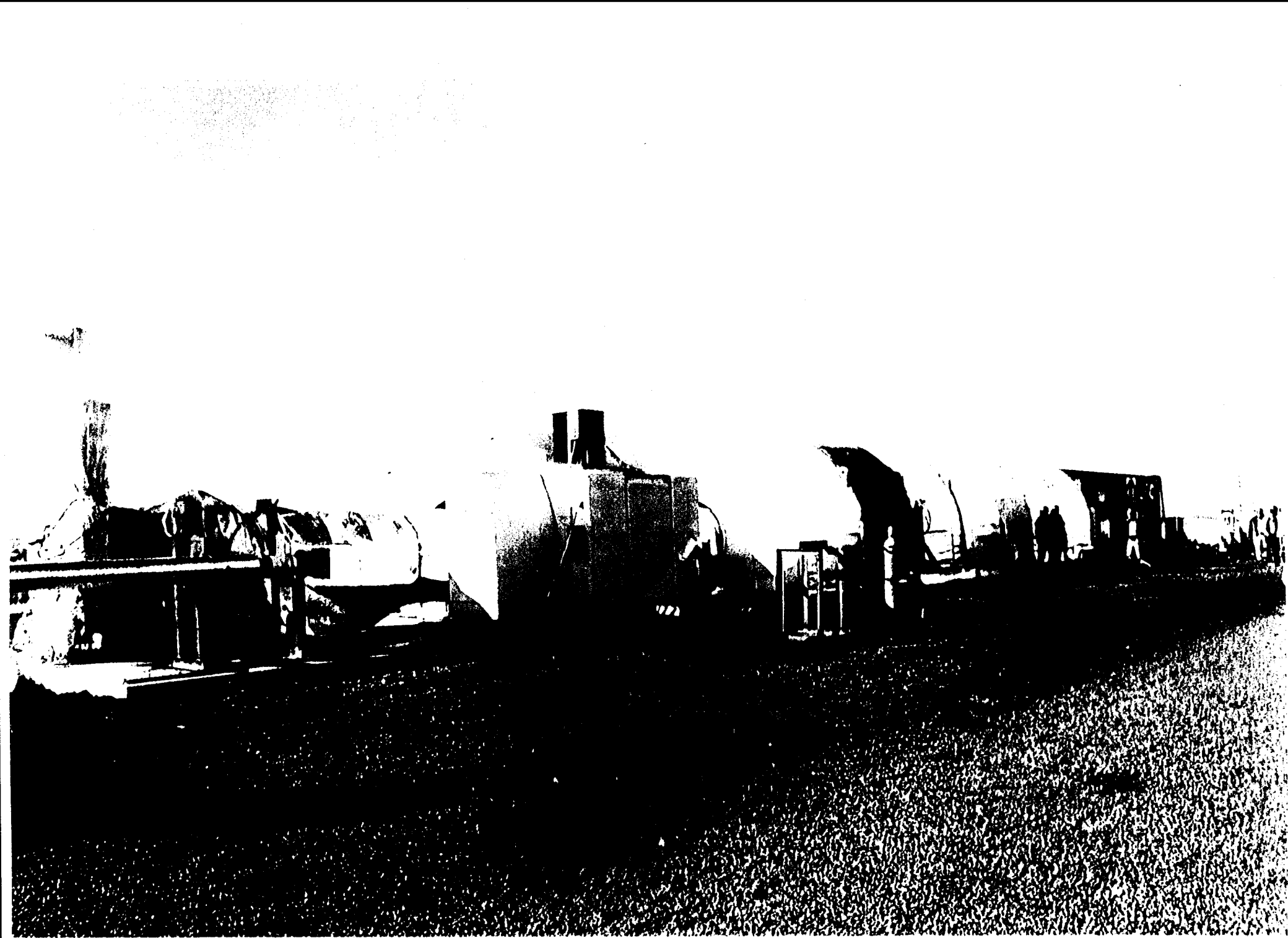


4

# FTIR Results

Tube No.	Z1480 x1E-4	Z2950 x1E-4	Comments
B001	0.32	0.47	Recleaned, after process/equipment mods.
B002	0.00	0.00	Recleaned, after process/equipment mods.
B003	0.06	0.37	Recleaned, after process/equipment mods.
G001	0.00	0.21	
I001	0.03	0.27	
G002	0.19	0.83	
H001	0.18	0.58	
S001A	15.7	4.01	After second wash (first wash drying looked suspect)
S002B	0.21	0.85	After second wash (first wash drying looked suspect)
S001F	1.25	1.00	After alcohol wipedown and sixth wash
A003	0.15	0.65	
S001G	1.27	0.56	After second alcohol wipedown and seventh wash
A009	0.03	0.31	
S001J	0.62	1.47	After tenth wash + two additional steam rinses
B045	0.37	1.47	
C001	0.25	0.65	
C002	0.34	1.23	
A047	0.19	0.62	





7





NO SMOKING

MA 06/20/00

Handwritten scribbles and numbers, possibly "1250" and "100".

3571

003

21 3

TESTING



