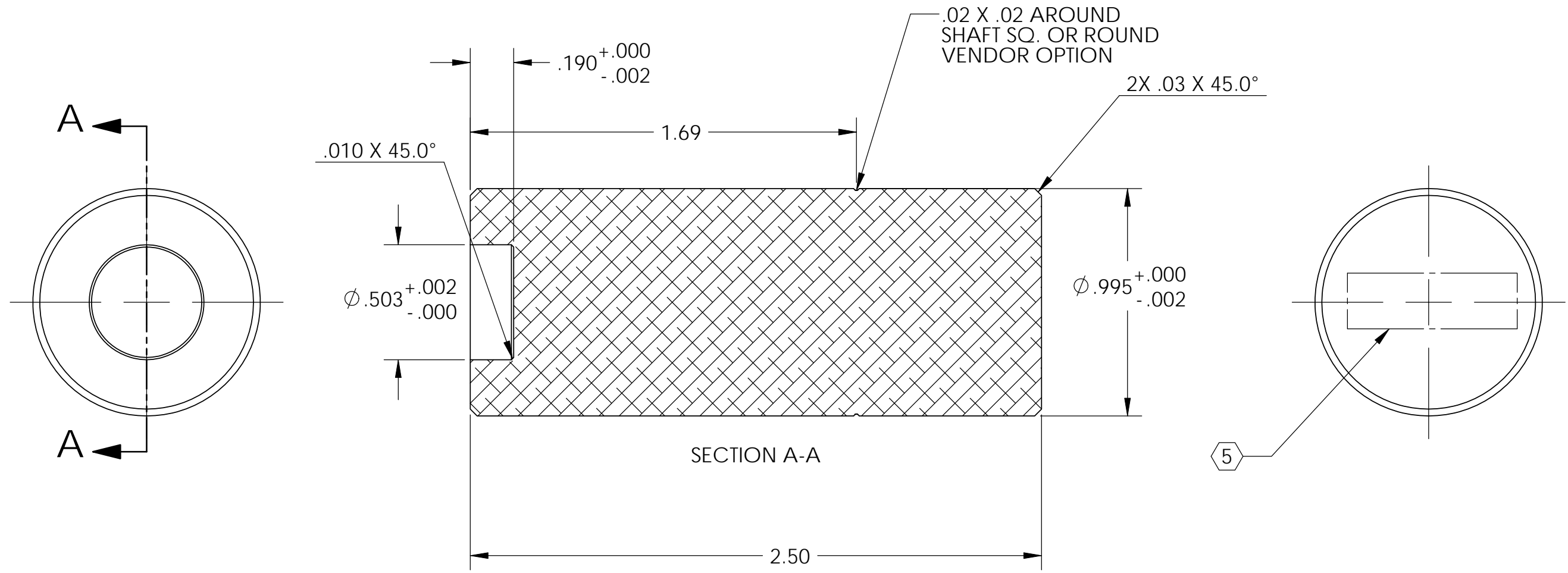


D1100236 DOWEL INSTALLATION PUNCH, .50 DIA. C71500, aLIGO BSC ISI, PART PDM REV: X-000, DRAWING PDM REV: X-000

NOTES CONTINUED:

- 5. SCRIBE, ENGRAVE, OR MECHANICALLY STAMP (NO INKS OR DYES) DRAWING PART NUMBER, REVISION (AND VARIANT OR "TYPE" IF APPLICABLE ON NOTED SURFACE OF PART FOLLOWED ON THE NEXT LINE WITH A THREE DIGIT SERIAL NUMBER. SERIAL NUMBERS START AT 001 FOR THE FIRST ARTICLE AND PROCEED CONSECUTIVELY. USE MINIMUM 0.12 HIGH CHARACTERS, UNLESS THE SIZE OF THE PART DICTATES SMALLER CHARACTERS. A VIBRATORY TOOL MAY BE USED.
EXAMPLE DXXXXXX-VY, TYPE-XX, S/N XXX.
- 6. APPROXIMATE WEIGHT = 0.280 LB.
- 7. MACHINE ALL SURFACES TO REMOVE OXIDES AND MILL FINISH. USE OF ABRASIVE REMOVAL TECHNIQUES (INCLUDING SANDING OR SCOURING FOR MATTE FINISH) IS NOT ALLOWED.
- 8. ALL PARTS SHALL BE MANUFACTURED IN ACCORDANCE WITH LIGO SPECIFICATION E0900364.

REV.	DATE	DCN #	DRAWING TREE #
v1	08 Feb. 2011	E1100087	-



NOTES AND TOLERANCES: (UNLESS OTHERWISE SPECIFIED)				LIGO CALIFORNIA INSTITUTE OF TECHNOLOGY MASSACHUSETTS INSTITUTE OF TECHNOLOGY		PART NAME	
DIMENSIONS ARE IN INCHES		1. INTERPRET DRAWING PER ASME Y14.5-1994. 2. REMOVE ALL SHARP EDGES, R.02 MIN. 3. DO NOT SCALE FROM DRAWING. 4. ALL MACHINING FLUIDS MUST BE FULLY SYNTHETIC, FULLY WATER SOLUBLE AND FREE OF SULFUR, SILICONE, AND CHLORINE.		SYSTEM ADVANCED LIGO SUB-SYSTEM SEI		DOWEL INSTALLATION PUNCH, 1/2 DIA, C71500, aLIGO BSC ISI	
TOLERANCES: .XX ± .015 .XXX ± .005		MATERIAL C71500 FINISH 32 μinch		DESIGNER M.HILLARD 08 Feb. 2011		SIZE DWG. NO. B D1100236	
ANGULAR ± .5°		NEXT ASSY		DRAFTER M.HILLARD 08 Feb. 2011		REV. v1	
				CHECKER M.MATICHARD 08 Feb. 2011		SCALE: 2:1 PROJECTION:	
				APPROVAL K.MASON 08 Feb. 2011		SHEET 1 OF 1	