

# Robust Detection of Noise Floor Drifts in Interferometric Data

Soma Mukherjee

Max Planck Institut fuer Gravitationsphysik  
Golm, Germany.

GWDAW7, Kyoto, Japan, 19/12/02

# Motivation :

- 
- ✦ Interferometric data has three components : Lines, transients, noise floor.
  - ✦ Study of a change in any one of these without elimination of the other two will cause interference.
  - ✦ Lines dominate.
  - ✦ Presence of transients change the central tendency.
  - ✦ “**SLOW**” nonstationarity of noise floor interesting in the analysis of several astrophysical searches, e.g. Externally triggered search.

# Methods :

---

✦ Running Median.

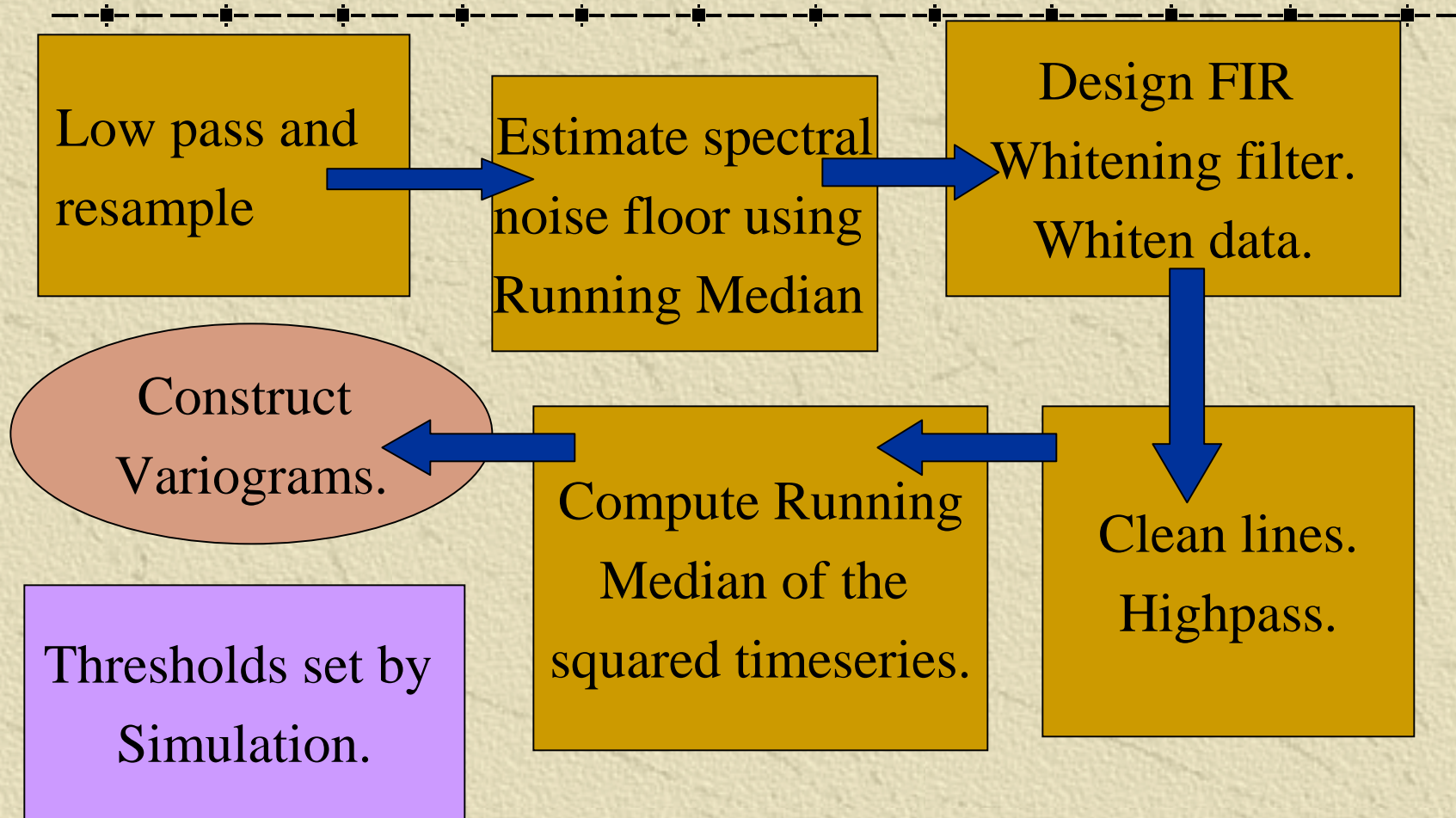
✦ Computation of :

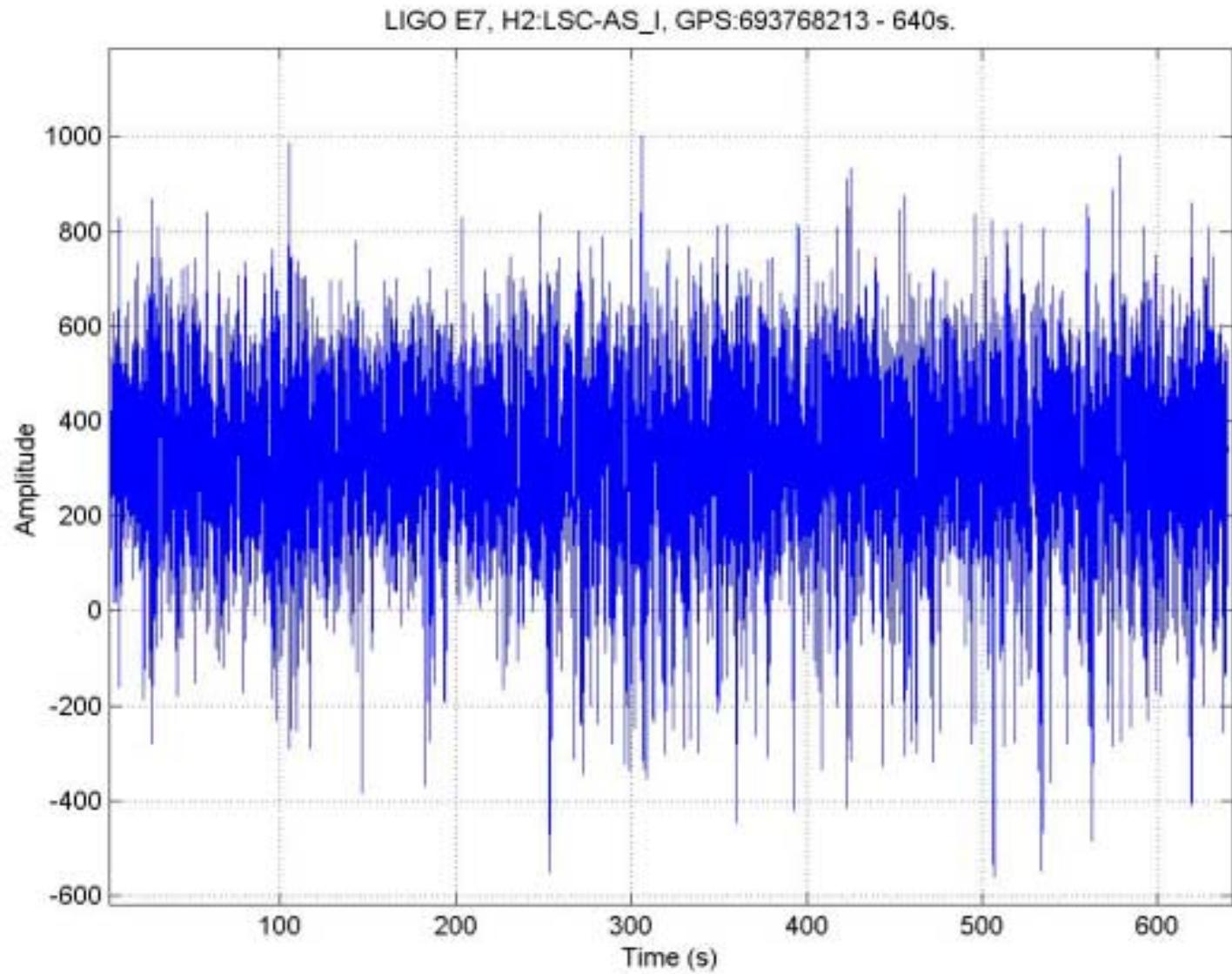
$$G(m) = V(Z_{t+m} - Z_t) / V(Z_{t+1} - Z_t)$$

$Z_t$  :  $t^{\text{th}}$  sample of a timeseries.

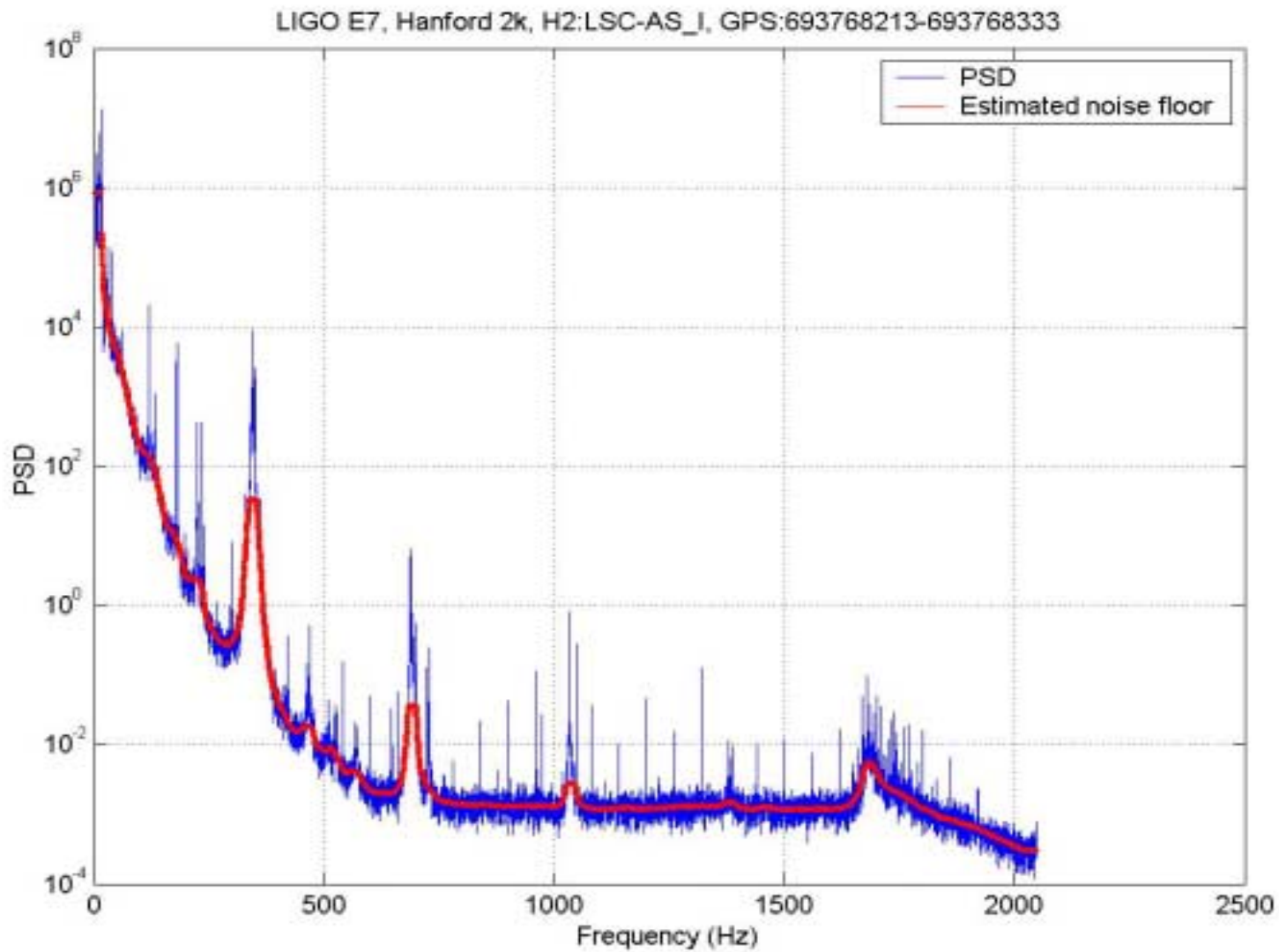
$m$ : Lag.

# Sequence :

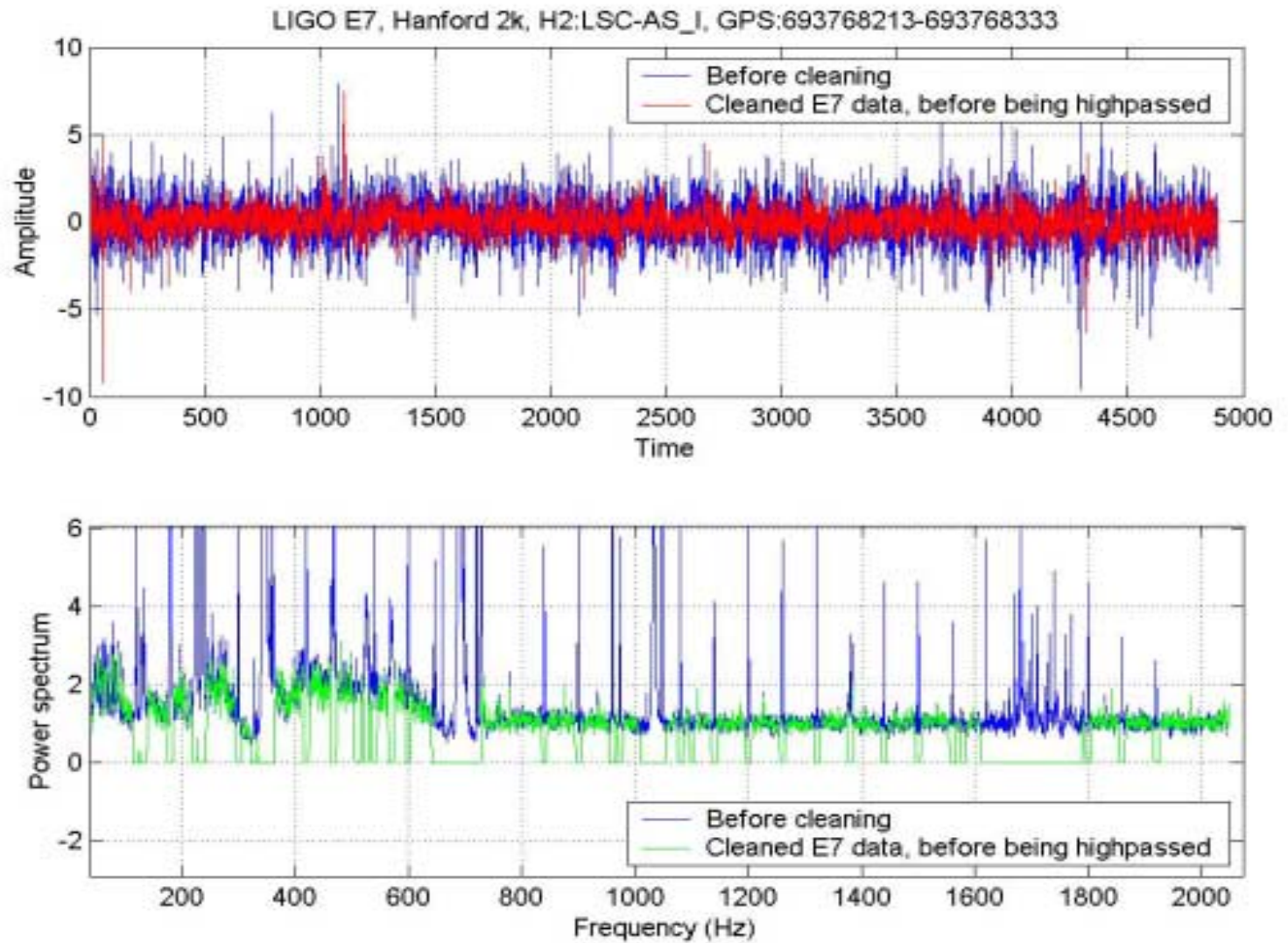




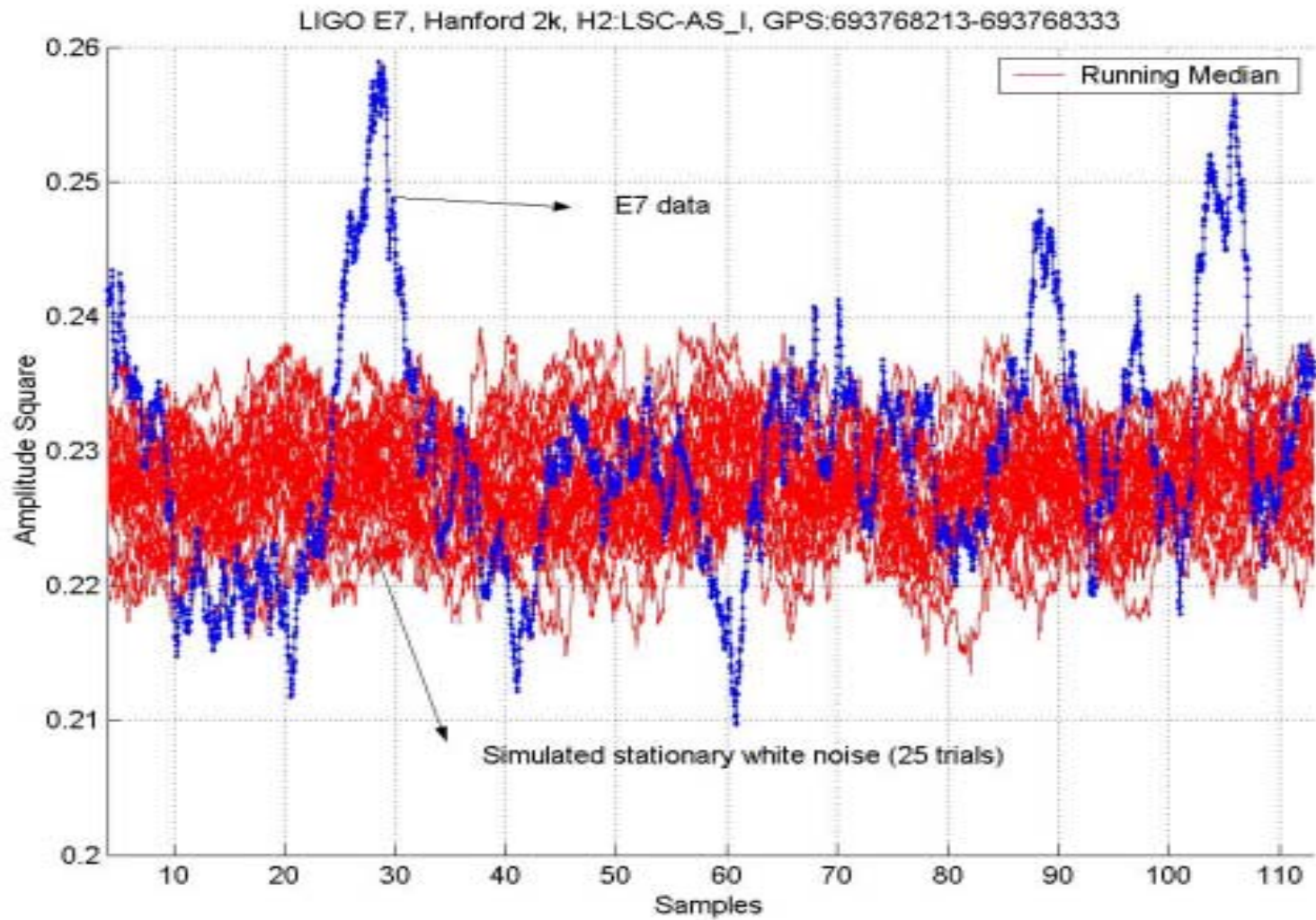
Soma Mukherjee,  
GWD7, Kyoto,  
Japan, 19/12/02,  
LIGO-G030166-00-Z



Soma Mukherjee,  
GWDW7, Kyoto,  
Japan, 19/12/02,  
LIGO-G030166-00-Z

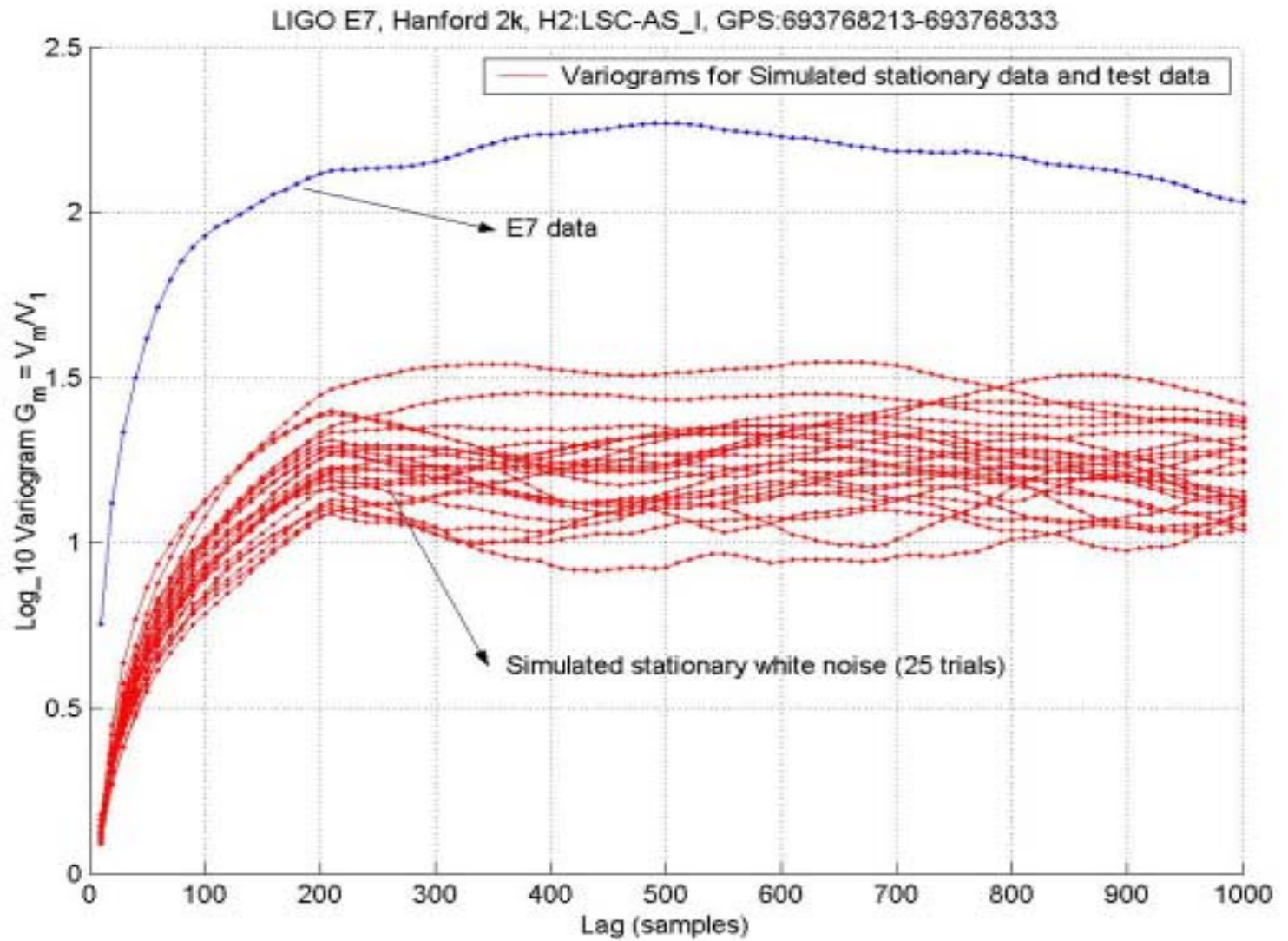


Soma Mukherjee,  
GWDW7, Kyoto,  
Japan, 19/12/02,  
LIGO-G030166-00-Z

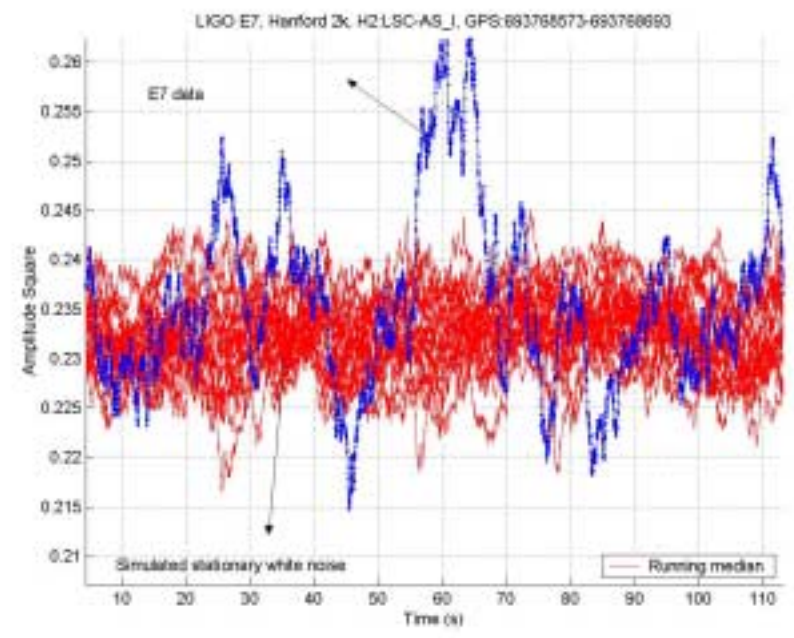
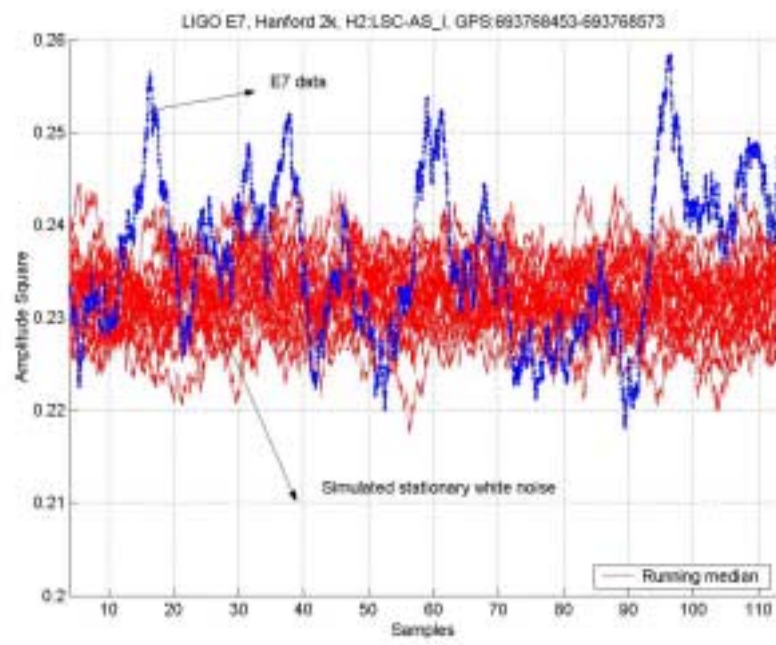
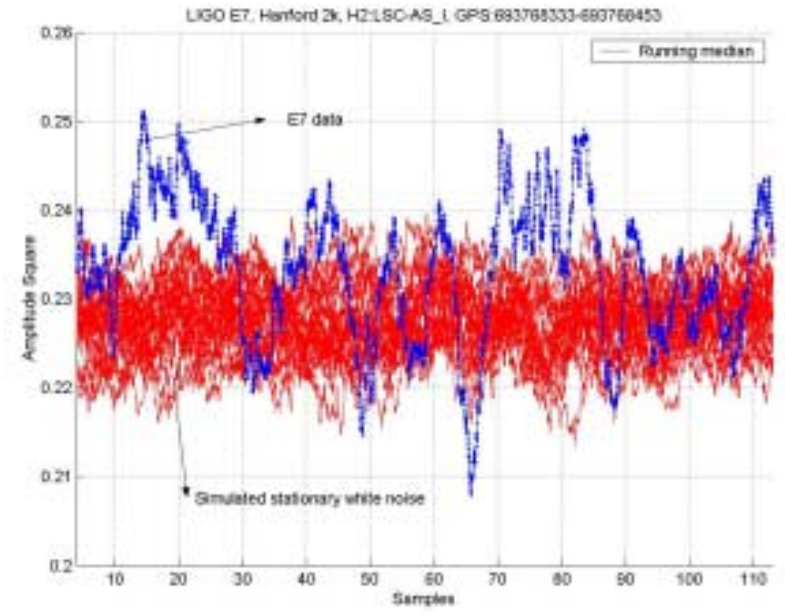
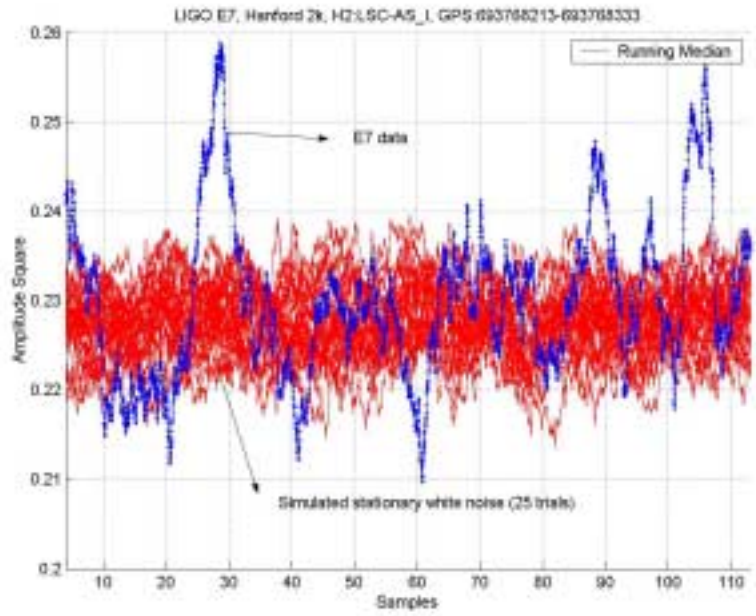


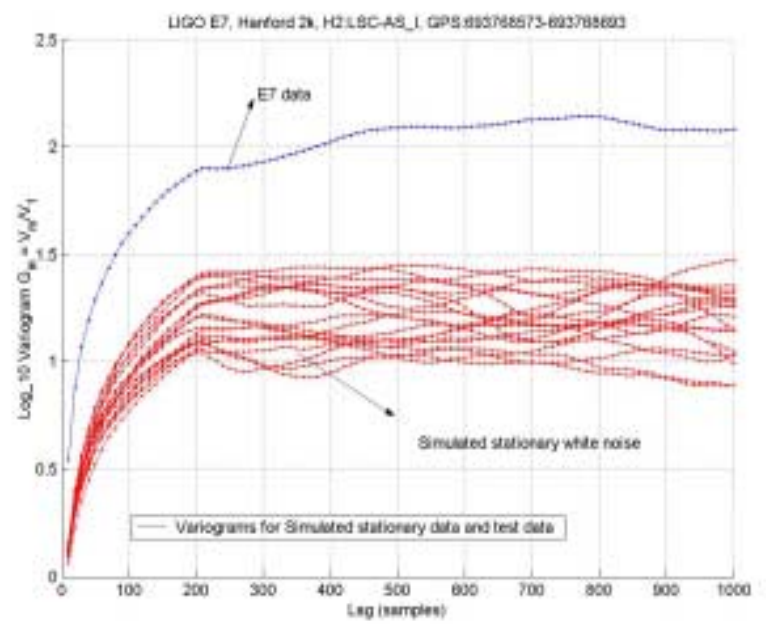
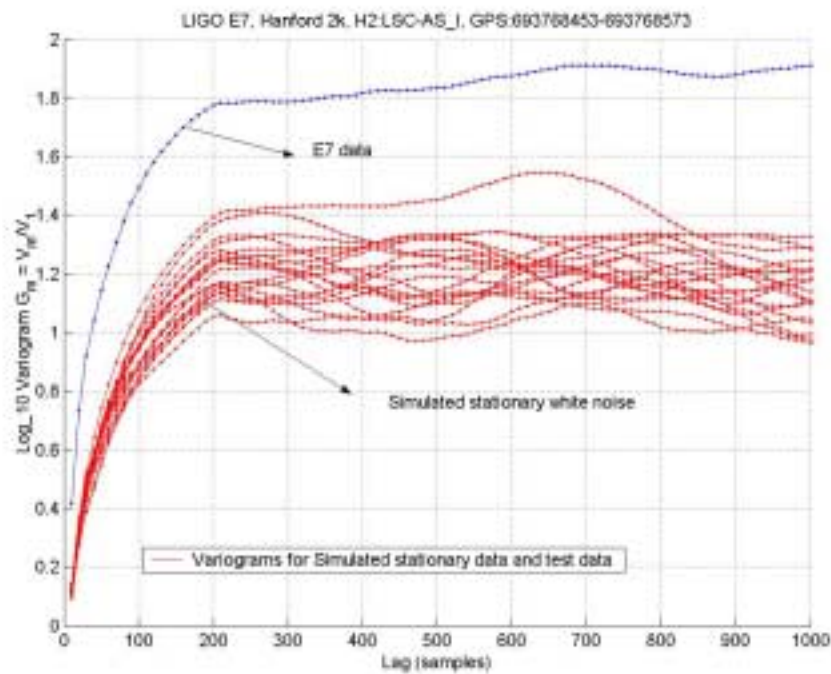
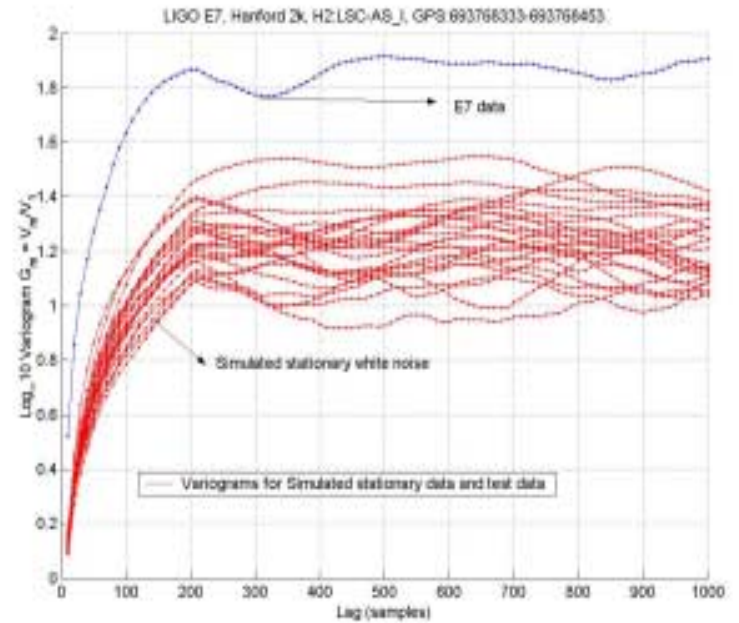
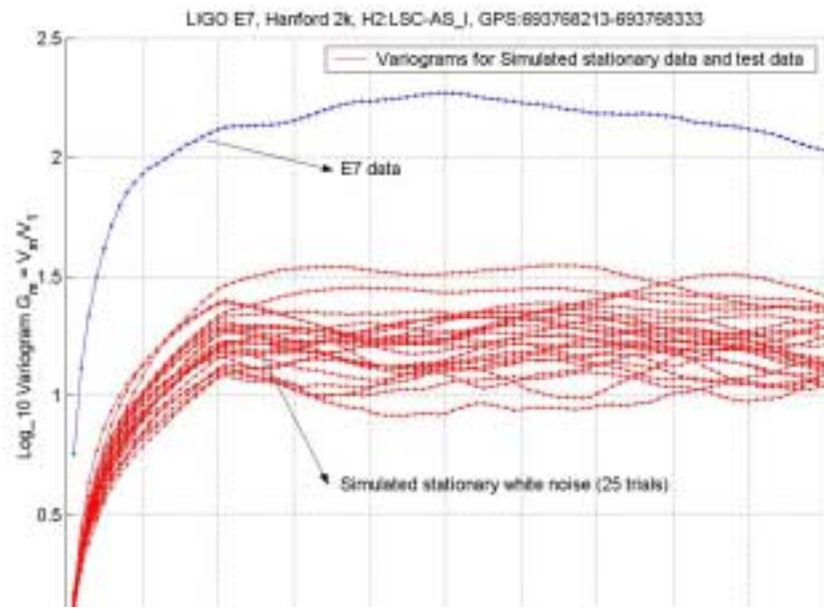
Soma Mukherjee,  
GWDW7, Kyoto,  
Japan, 19/12/02,  
LIGO-G030166-00-Z

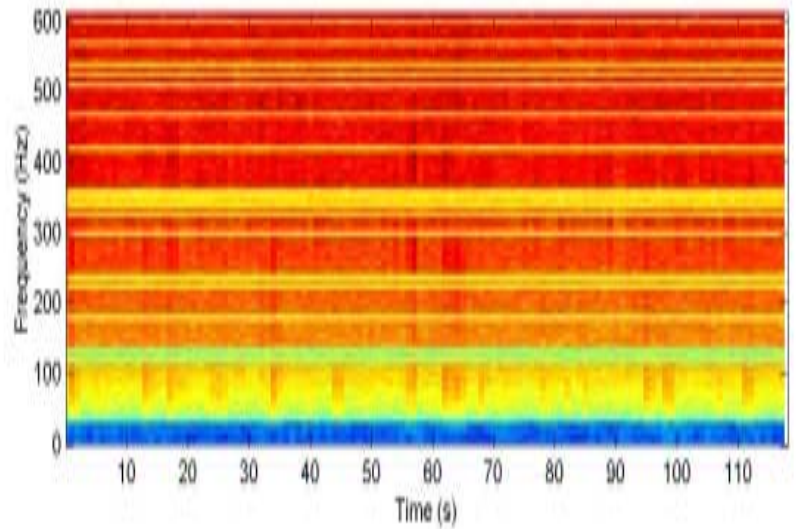
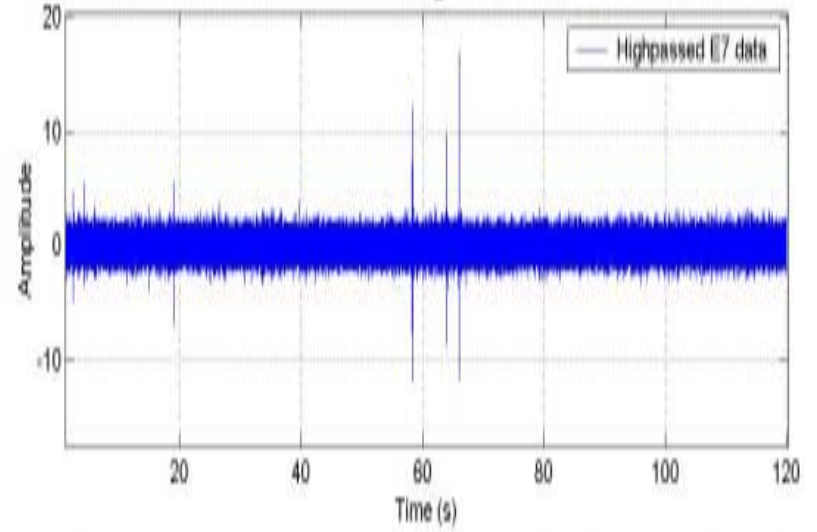
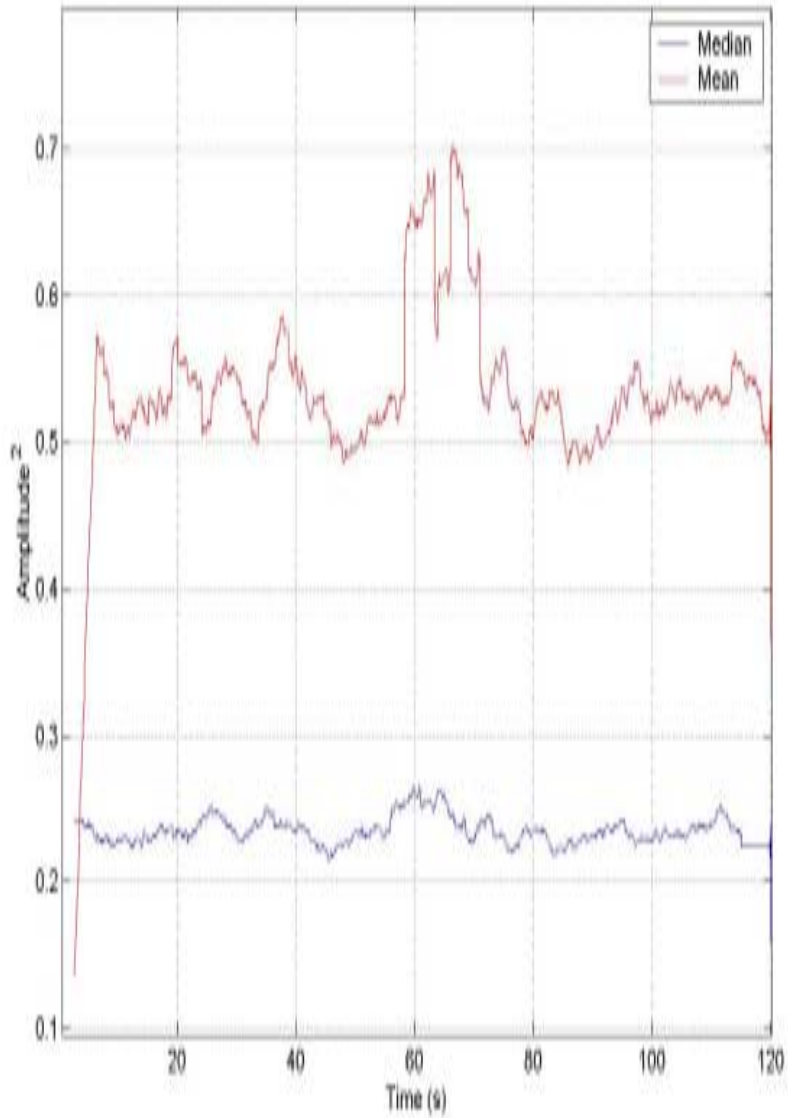




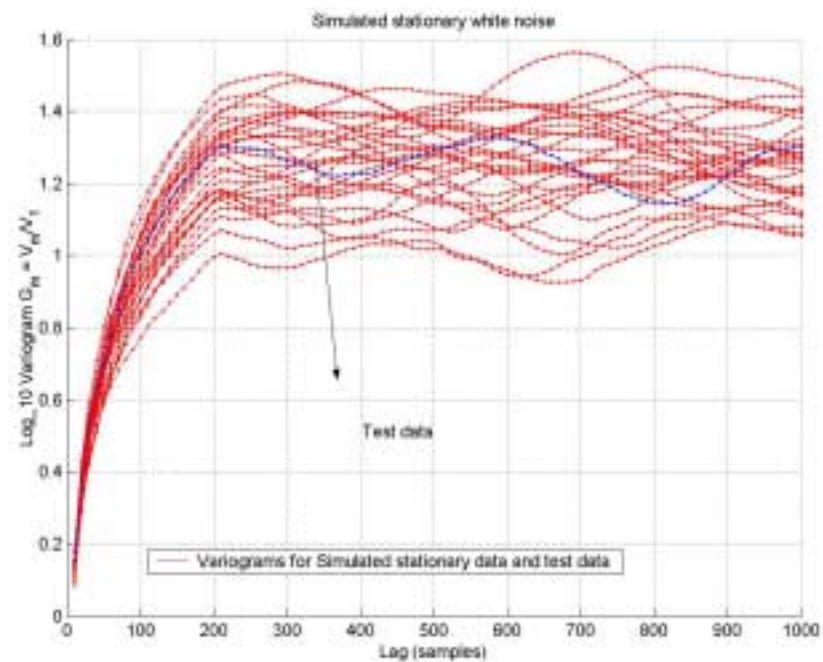
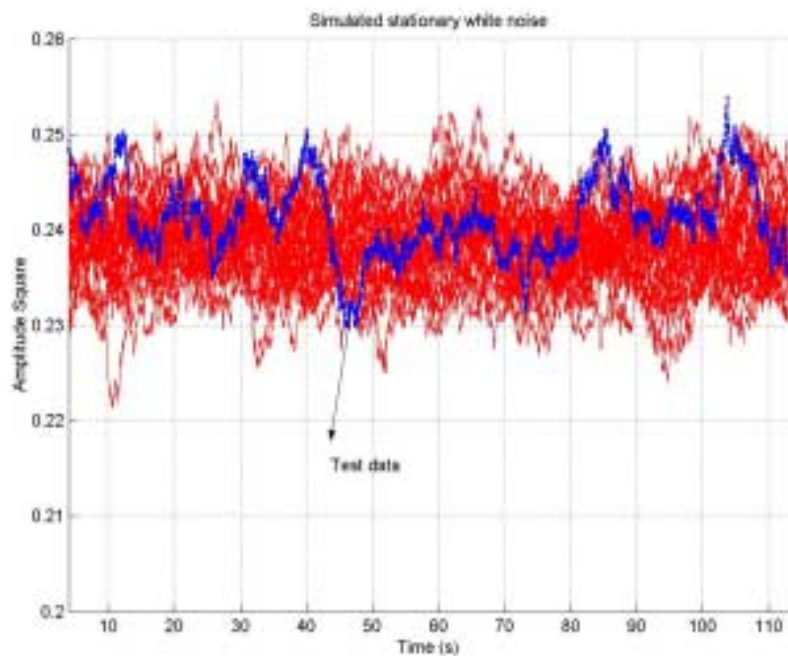
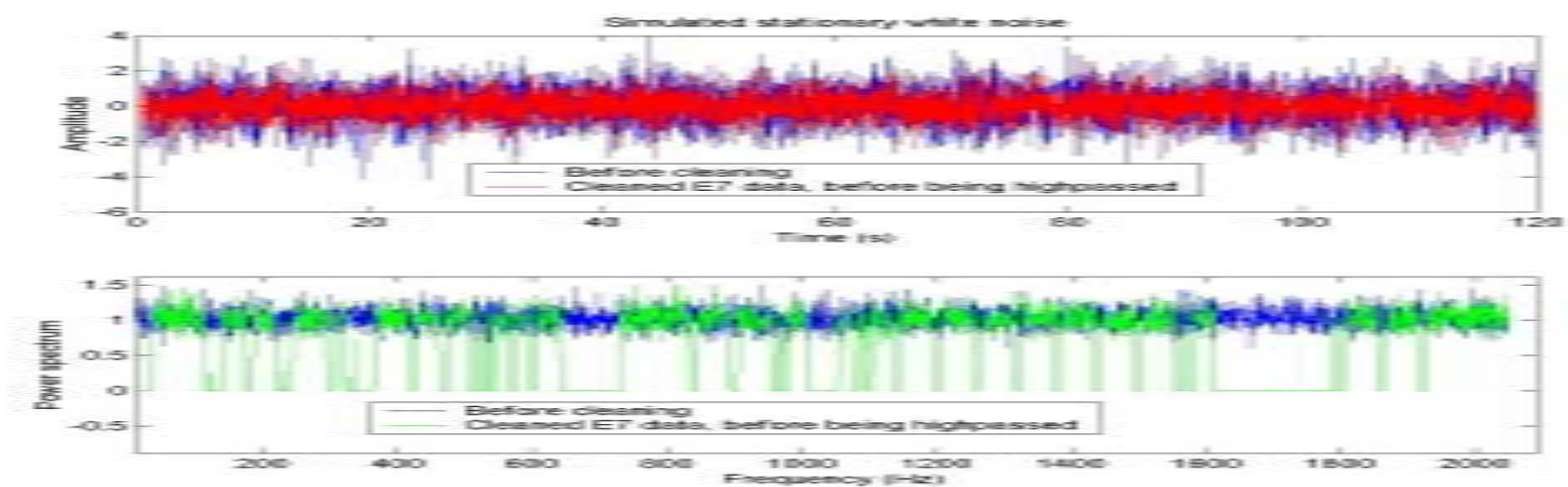
Soma Mukherjee,  
GWDW7, Kyoto,  
Japan, 19/12/02,  
LIGO-G030166-00-Z



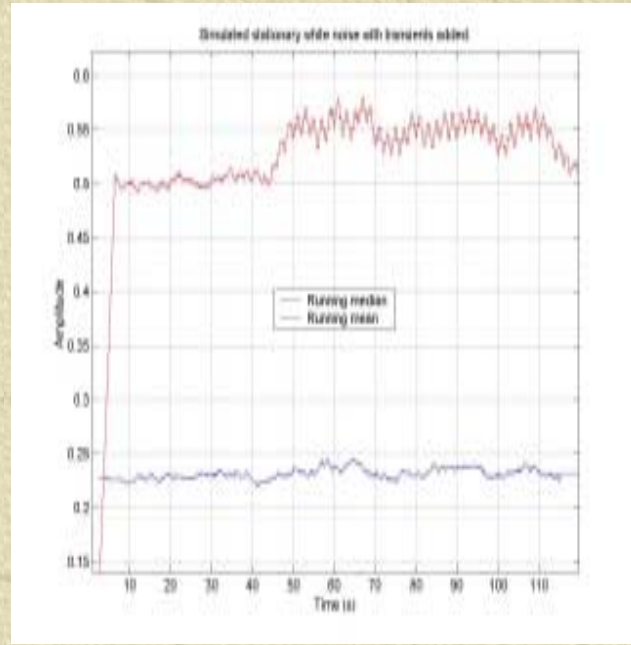
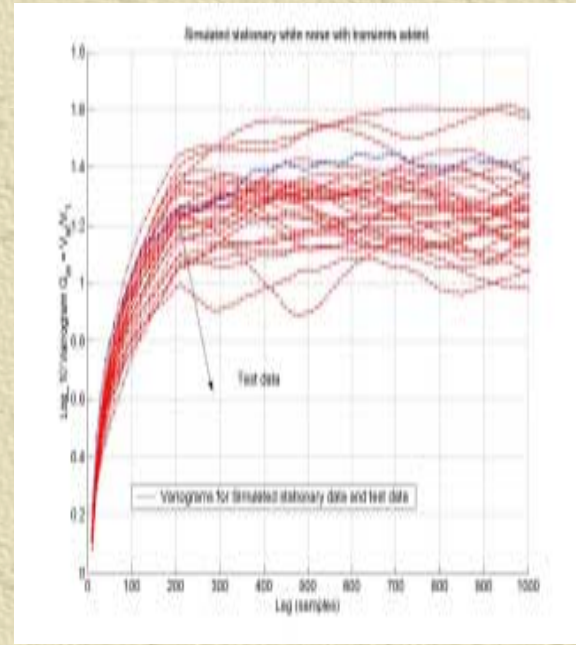
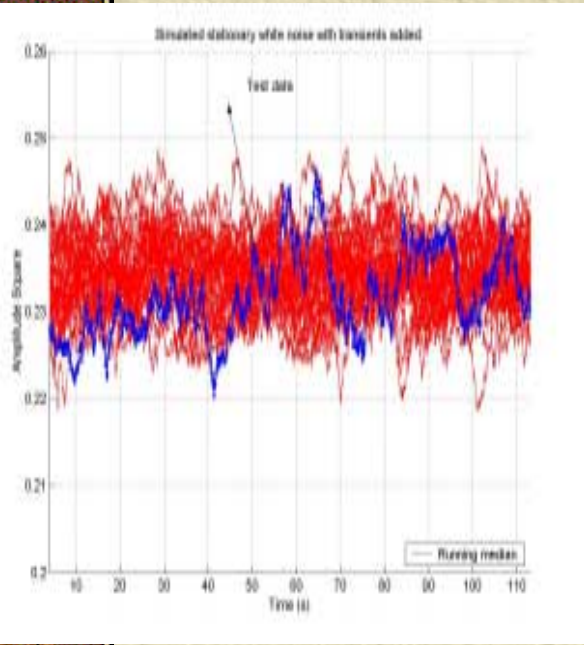
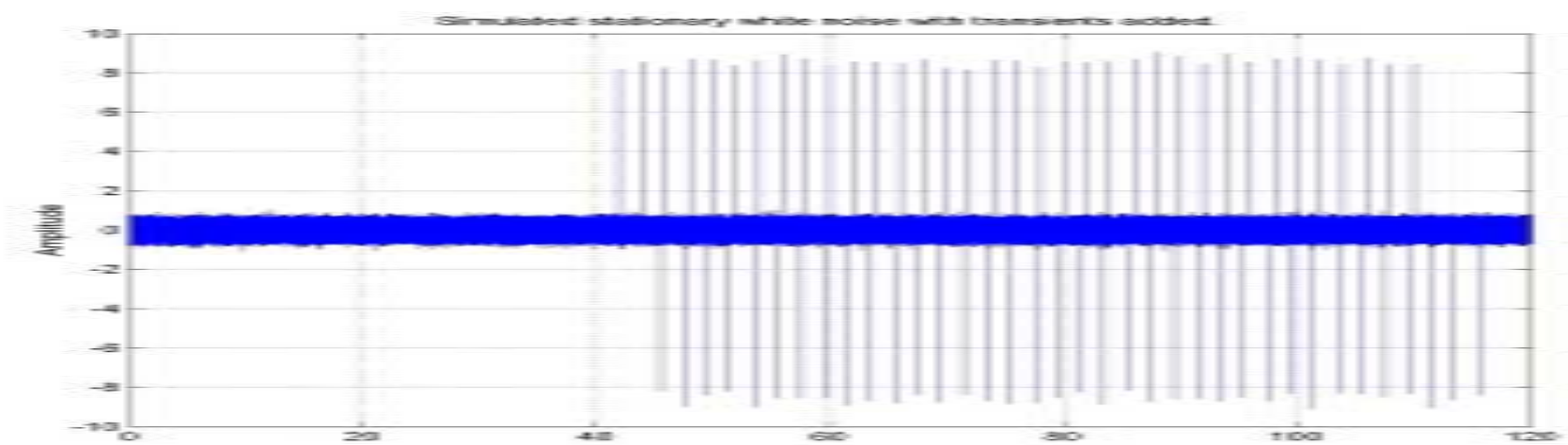




Soma Mukherjee,  
GWDAW7, Kyoto,  
Japan, 19/12/02,  
LIGO-G030166-00-Z

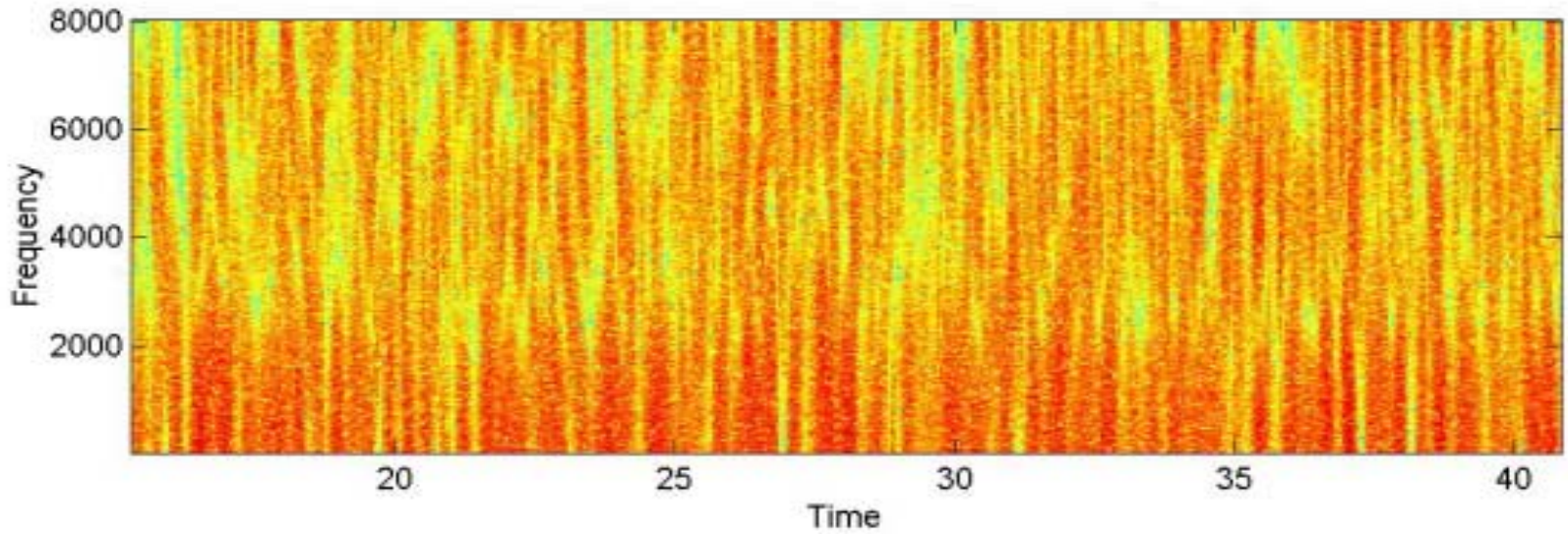
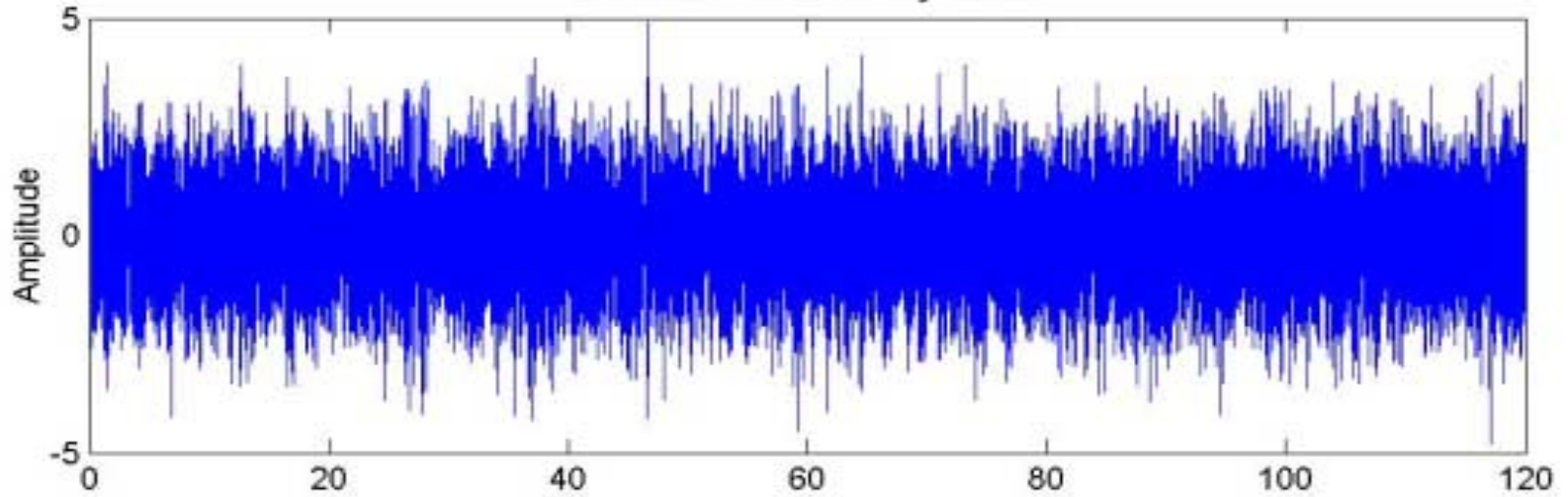


Conda Makino, JCO,  
GWDW7, Kyoto,  
Japan, 19/12/02,  
LIGO-G030166-00-Z

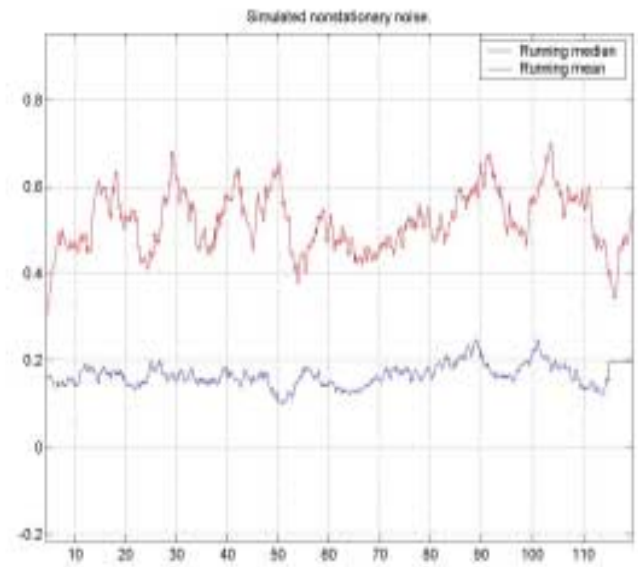
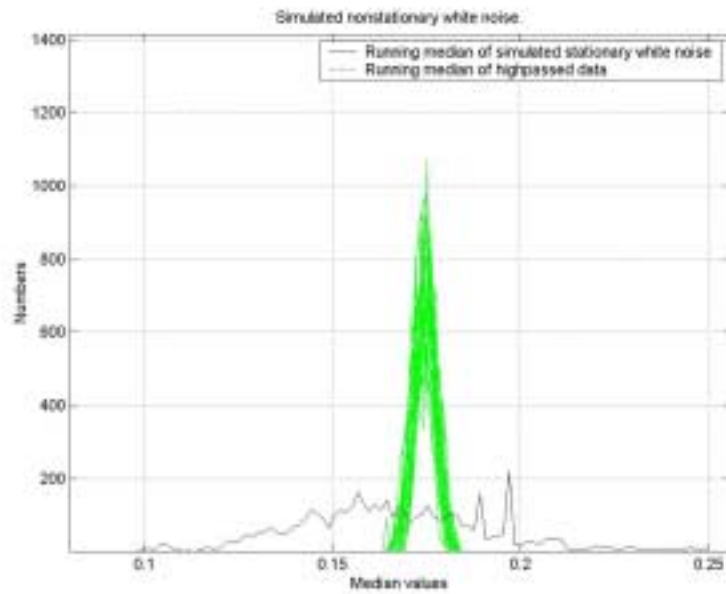
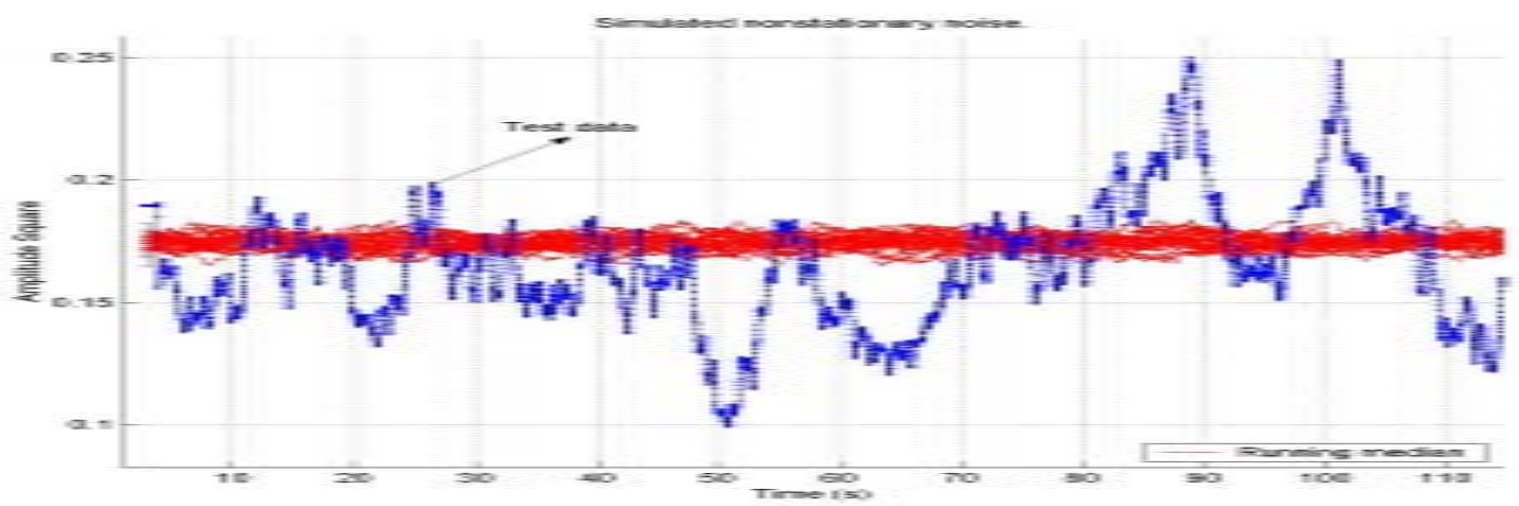


Soma Mukherjee,  
 GWDAW7, Kyoto,  
 Japan, 19/12/02,  
 LIGO-G030166-00-Z

Simulated nonstationary noise.



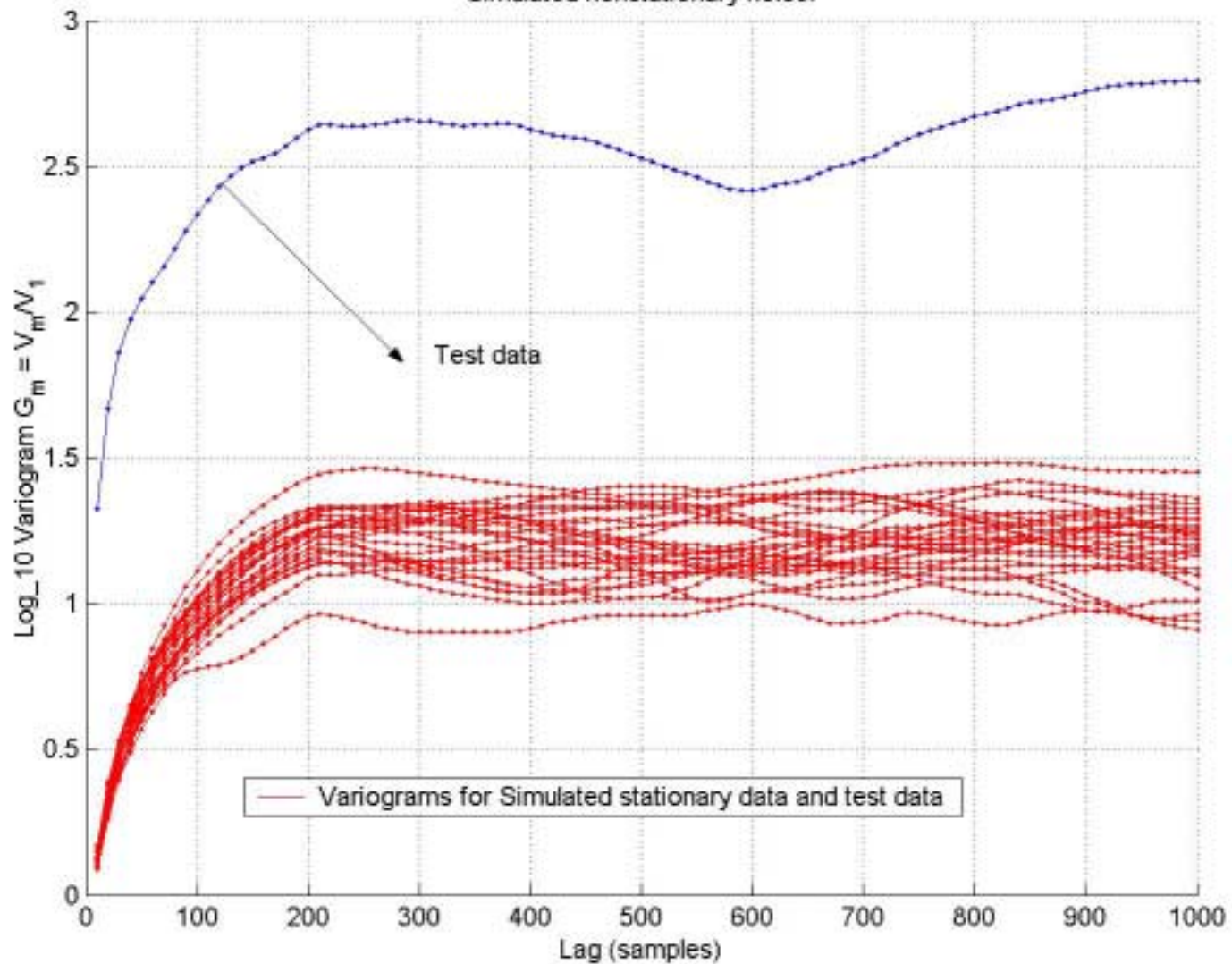
Conda Makino, JCO,  
GWDW7, Kyoto,  
Japan, 19/12/02,  
LIGO-G030166-00-Z



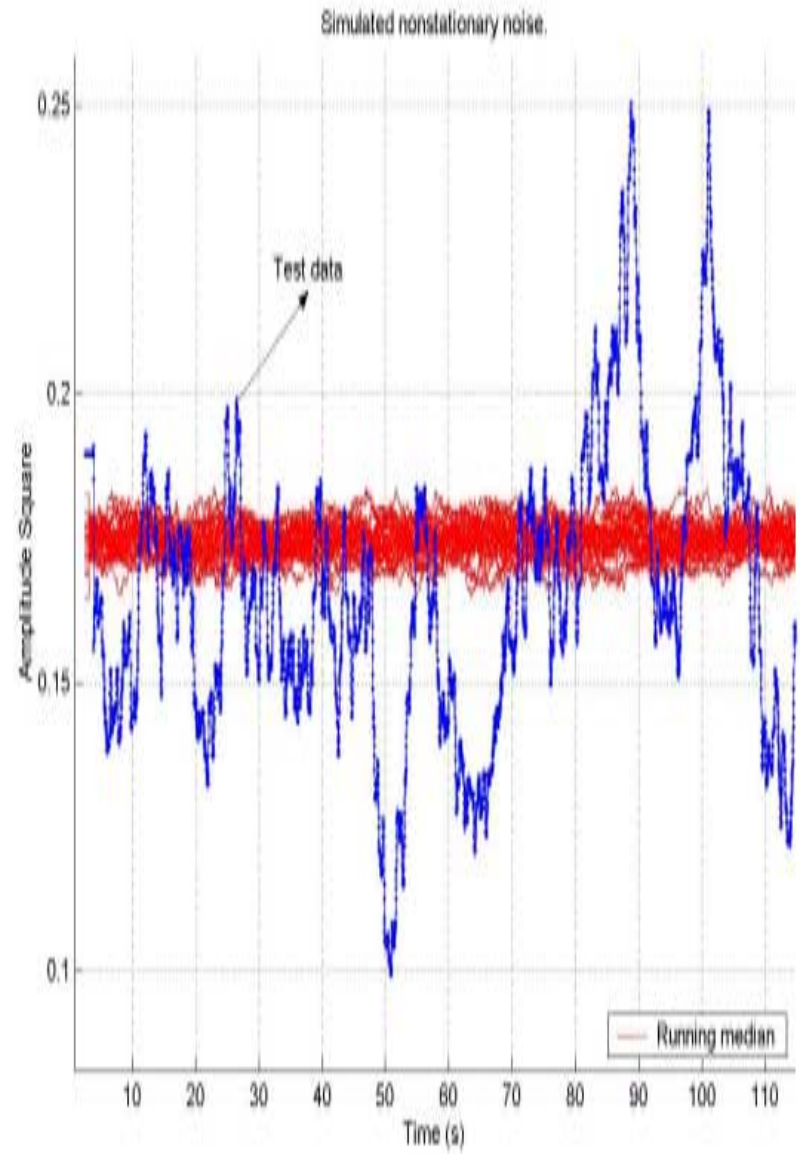
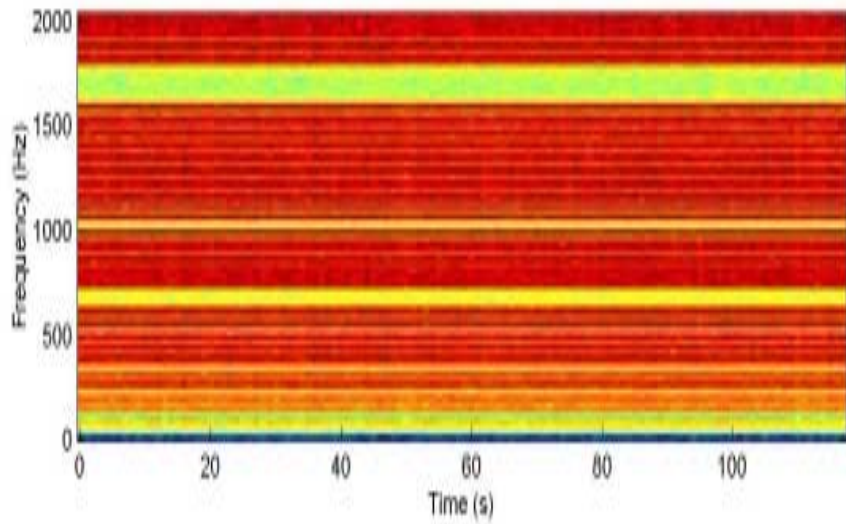
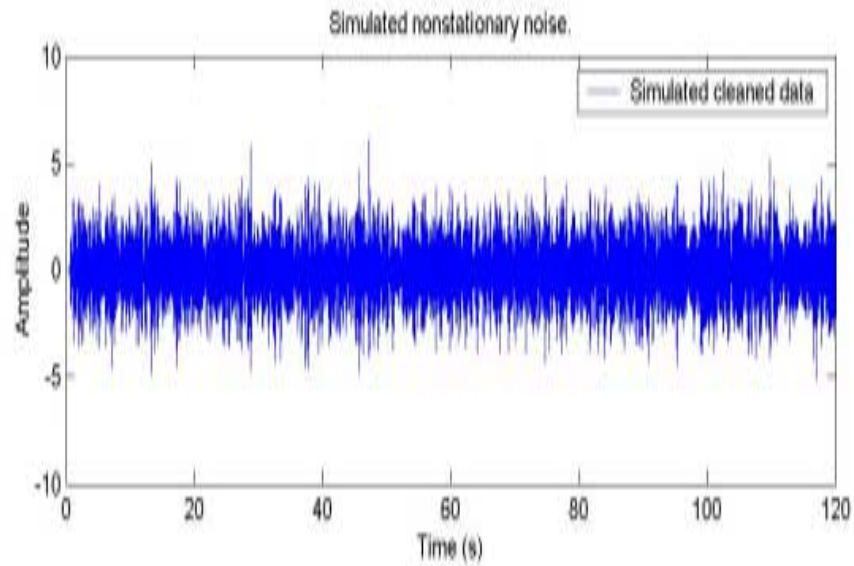
Soma Mukherjee,  
 GWDAW7, Kyoto,  
 Japan, 19/12/02,  
 LIGO-G030166-00-Z



Simulated nonstationary noise.

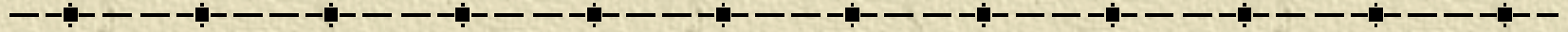


Soma Mukherjee,  
GWD7, Kyoto,  
Japan, 19/12/02,  
LIGO-G030166-00-Z



Soma Mukherjee,  
 GWDAW7, Kyoto,  
 Japan, 19/12/02,  
 LIGO-G030166-00-Z

# Future :



- ✦ `To be run on full S1 data (LIGO/GEO).
- ✦ More quantification of the Running Median and variogram.
- ✦ To be tested on bandlimited data.
- ✦ Automation and incorporation in the DCR underway.