



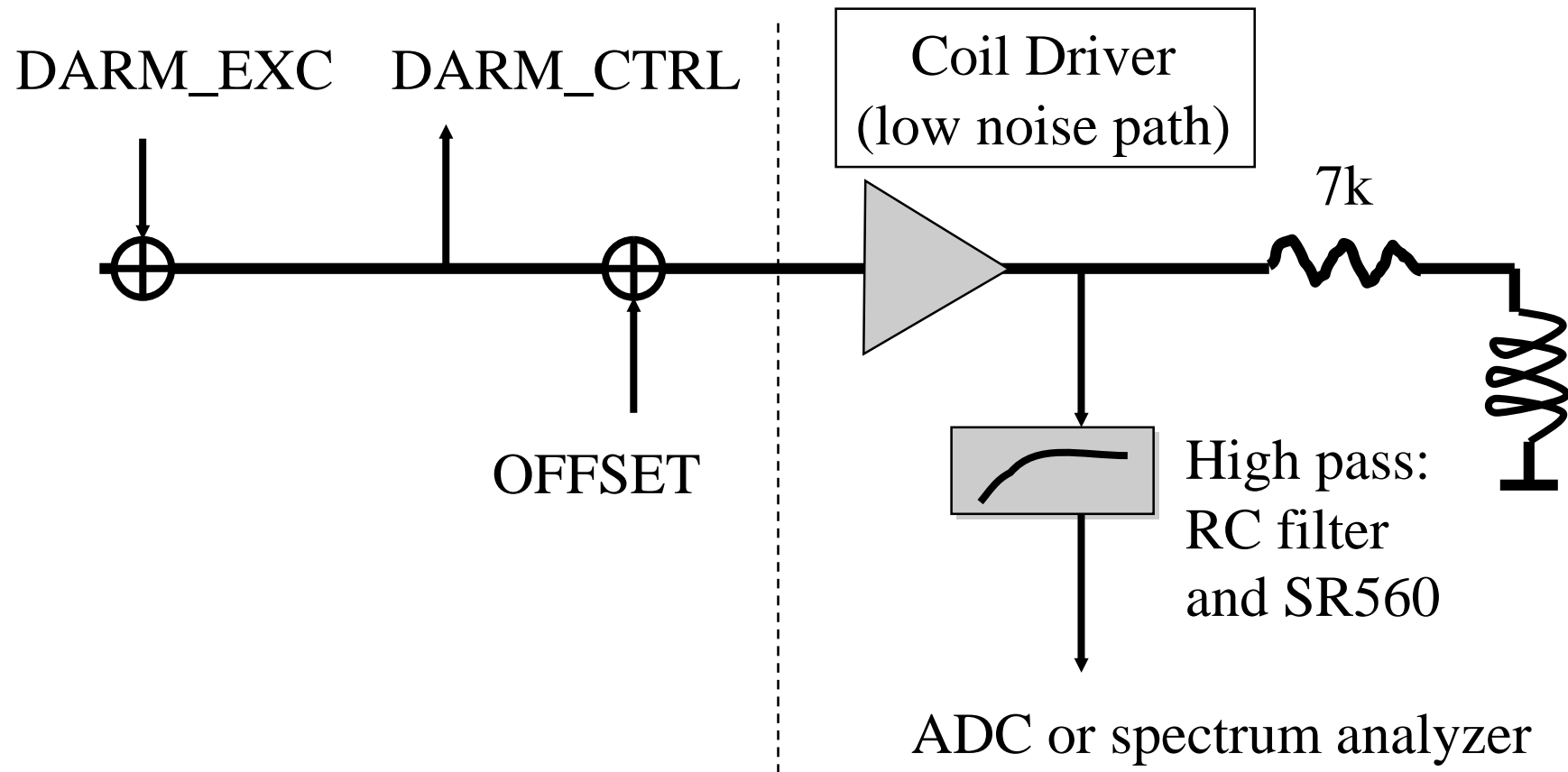
Coil driver linearity measurements

Ken Franzen, Valera Frolov
LIGO Livingston Observatory

During the period of high microseism the voltage on the output of the coil driver goes up to 60-70 V out of maximum 120 V

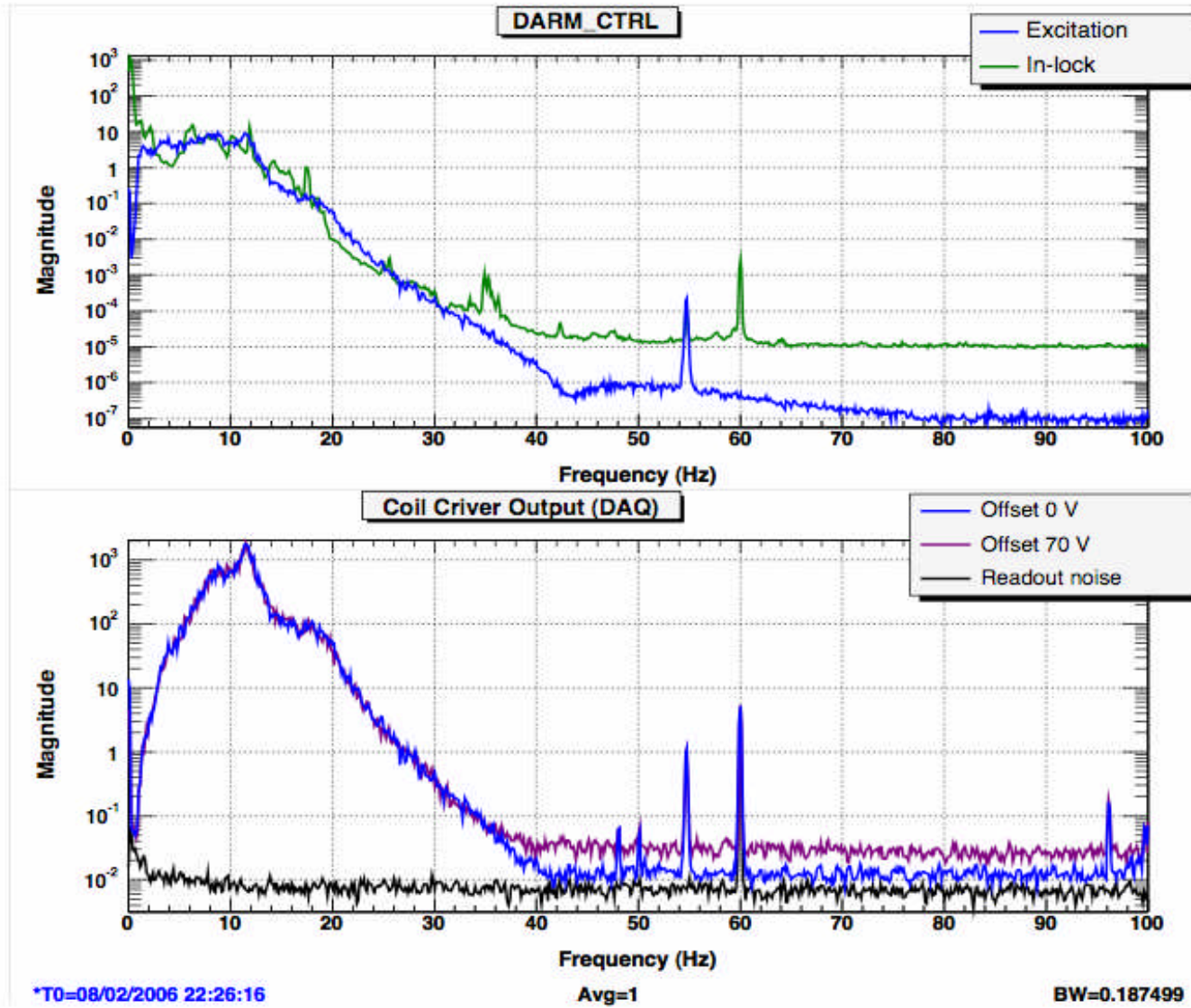
Tested the response of the ETMX coil driver

Measurement Diagram



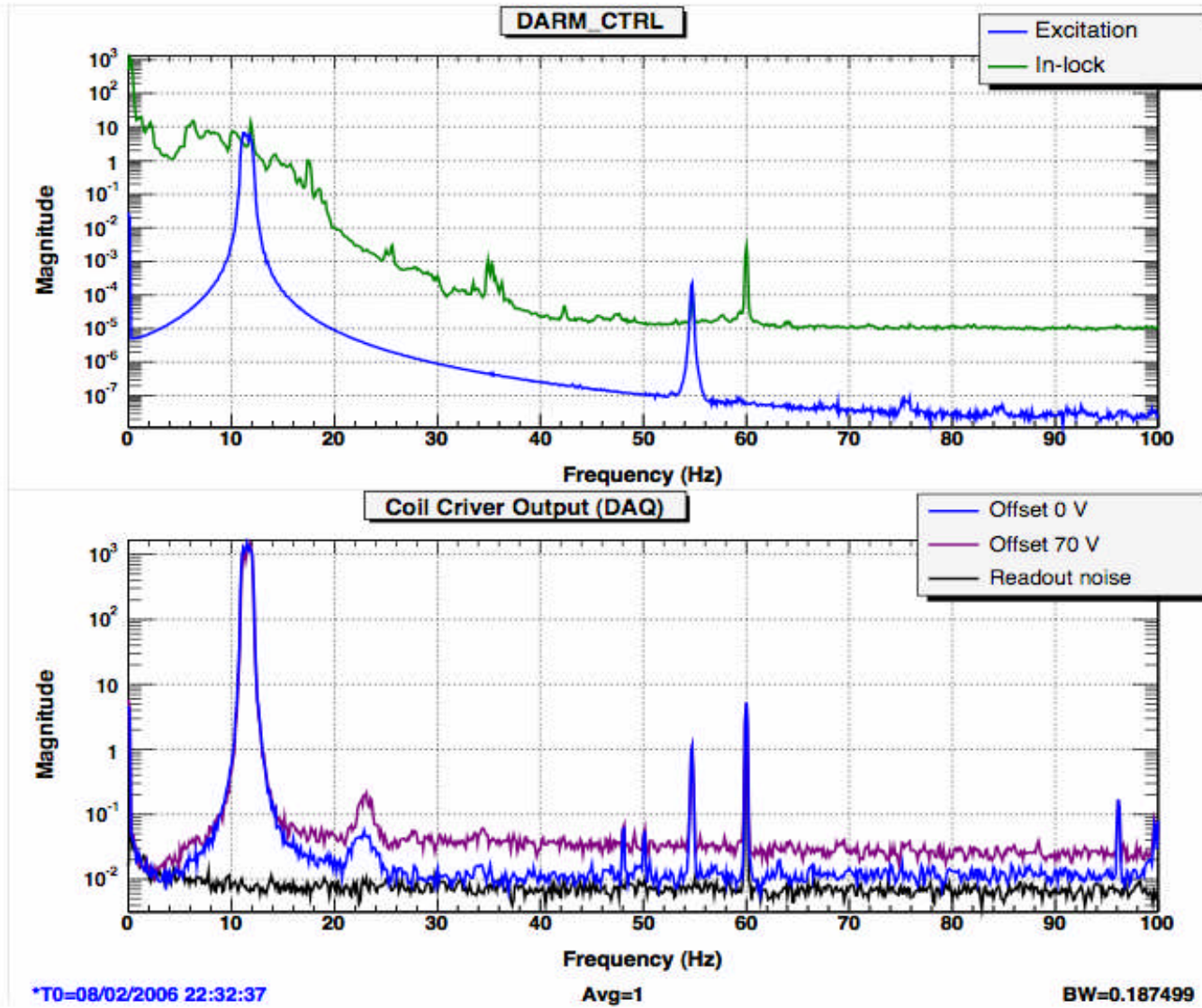


ETMX test





ETMX test 2





ETMY test

