

New Work Breakdown Structure

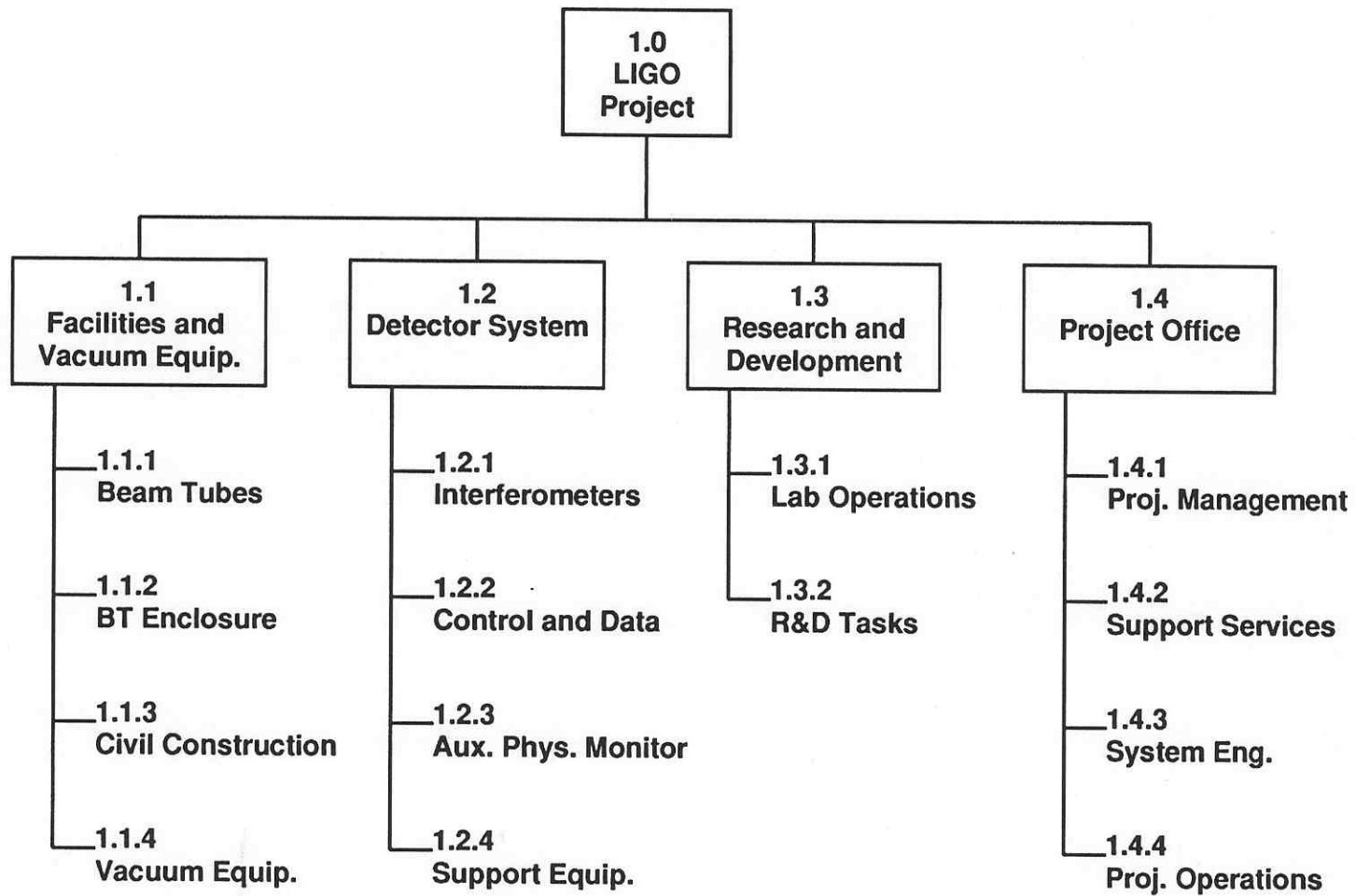
S. Whitcomb

June 9, 1994

K190-6940029-00-M

New Work Breakdown Structure

- **Objectives**
 - **Organize WBS Around “Products”**
 - **Define WBS Elements to Form Cohesive, Manageable Units**
 - **Group WBS Elements to be Compatible with Organizational Reporting Lines**
 - **WBS Should Reflect Particular Circumstances and Needs of Project**
- **Approach**
 - **Build on Old Hardware WBS Elements**
 - **Spread In-House Expenses to Appropriate WBS Elements**



LIGO Work Breakdown Structure