

G960022-

Ligo
progress
photographs
civil work
Stranco contract
Feb. 16, 1996

G960022-

1



G960022-01-O-P

1. Southwest arm at station 92+60 culvert crossing.

G960022-02-O-P

2. Southwest arm at station 92+60 culvert crossing



3. Southwest arm at station 16+40 excavating for culvert crossing.

G960022-03-O-P

G960022-04-O-P

4. southwest arm at station 16+40 excavating for culvert crossing, checking grade.



G960022-05-O-P

5 Checking grade at southwest arm, station 16+40 culvert crossing



6 Southwest arm at station 16+40, checking grade at culvert crossing

G960022-06-O-P



G960022-07-O-P

7. Southwest arm at station 123 culvert crossing, setting pipe in place.

G960022-08-O-PV

8. Southwest arm at station 123 culvert crossing, checking pipe installation.



9. Southwest arm at station 123 looking northeast reviewing surface drainage.

G960022-09-O-P



G960022-10 -O-P

10 Southwest arm at station 92.60 installing pipe for the first time ,correction followed.

G960022-11 -O-P

11.Southwest arm at station 92+60 rigging pipe into place.



12.Southeast arm
disking berm at station
113+00

G960022-12 -O-P



G960022-13-O-P

13. Southeast arm around station 115 , Organic material exposed during disking operation.

G960022-14-O-PV

14. Southeast arm at station 113+00 disking berm material to remove moisture.



15. Southeast arm at station 113+00 removing small tree found by disking.

G960022-15-O-P



G960022-16-O-P

16. Southeast arm at station 113+00 showing compacted fill.

G960022-17-O-PV

17. southeast arm this is a view looking north at a drainage ditch used for construction.



18 Southeast arm at station 118 looking SE to the end of boundary.

G960022-18-O-P



G960022-19 -O-PV

19. Southeast arm at station 112 looking northeast, compacted berm.

G960022-20-O-P

20 Southeast arm looking SE at end of boundary limit. compacted fill



21 Southwest arm at station 123+00 culvert crossing. backfill operation

G960022-21-O-P

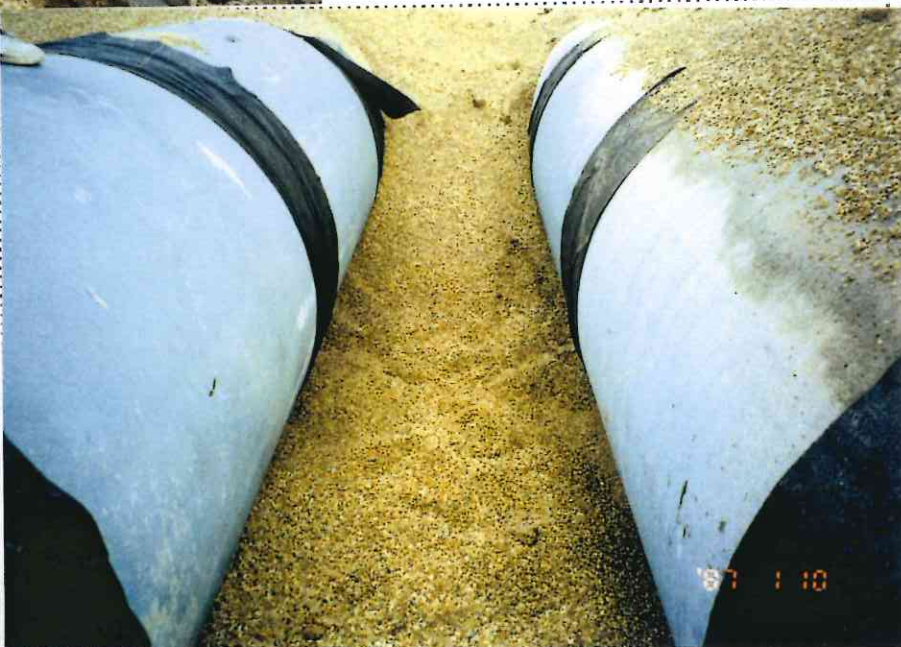


G960022-22-O-P

22.Southwest arm at station 123 culvert crossing .

G960022-23-O-P

23 southwest arm at station 123+00 culvert crossing showing pea gravel backfil around pipe



24.Southwest arm at station 123+00 culvert crossing backfil operation.

G960022-24-O-P