

G960124-



G960124-01-OP

The subgrade preparation is completed and the southwest arm is ready for the rebar installation.



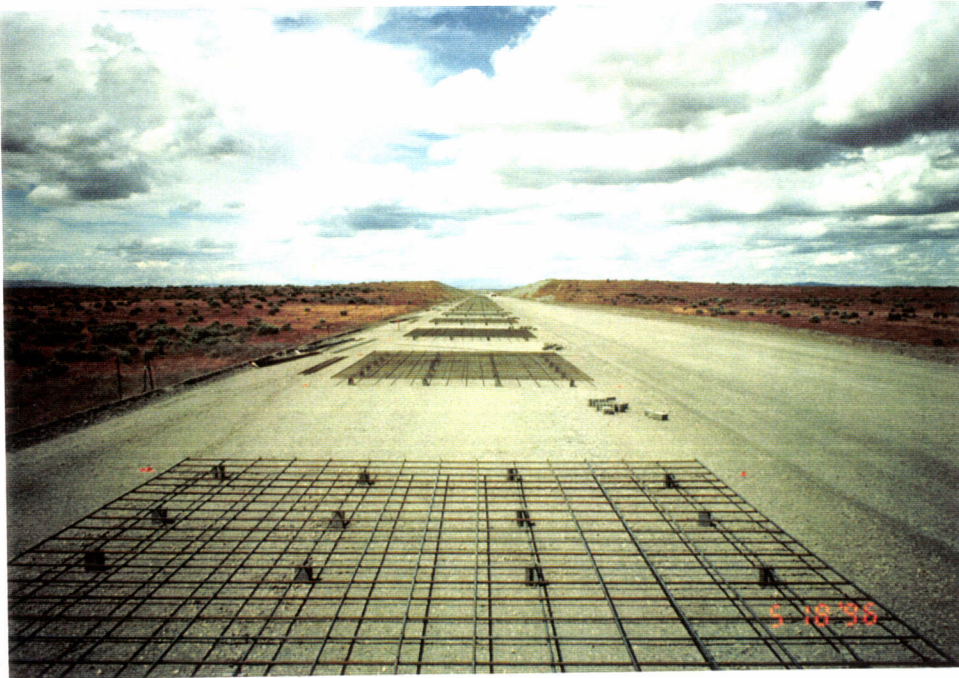
G960124-02-OP

Typical rebar mats installed along the southwest arm.



G960124-03-OP

General process of the rebar mat installation



G960124-04-O-P

Placing the rebar for the beam tube enclosure support slab. Alternate sections of mats were placed until the dowel baskets arrived



G960124-05-O-P

Typical installation of the dowel basket at the slab joint location.



G960124-06-O-P

Completed section of the rebar installed along the southwest arm



G960124-07-O-P

Close-up of the typical rebar mat.



G960124-08-O-P

Dowel baskets arrived assembled and ready for installation.



G960124-09-O-PV

Another and final view of the installed rebar mats.



G960124-10-OP

The beam tube access to subgrade preparation with cap rock and 4" of road base material.



G960124-11-OP

Completed the temporary batchplant footings



G960124-12-OP

Close-up of the Dowel basket at a typical beam tube slab joint location.

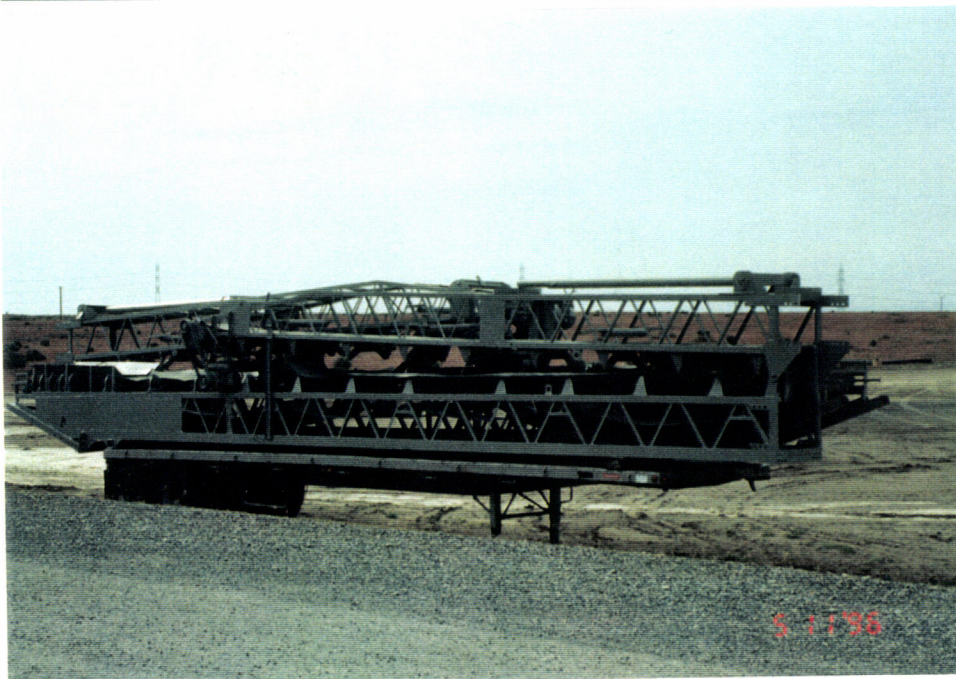


G960124-13-O-P



G960124-14-O-P

Batch plant equipment arrival.



G960124-15-O-P

Conveyors for the gravel and sand delivery to the batch plant arrived



G960124-16-OP

100 ton Lampson crane
is assisting in the batch
plant erection.



G960124-17-OP

Batch plant erection
continued



G960124-18-OP

Batch plant erection
virtually completed.



G960124-19-O-P

The assembly of the concrete belt placer continued near the southwest arm end building.



G960124-20-O-P

Different view of the belt placer.



G960124-21 -O-PV

Hydraulic crane is assisting in the assembly of the belt placer



G960124-22-O-P

Ductile-iron pipe with mechanical joint arrived.



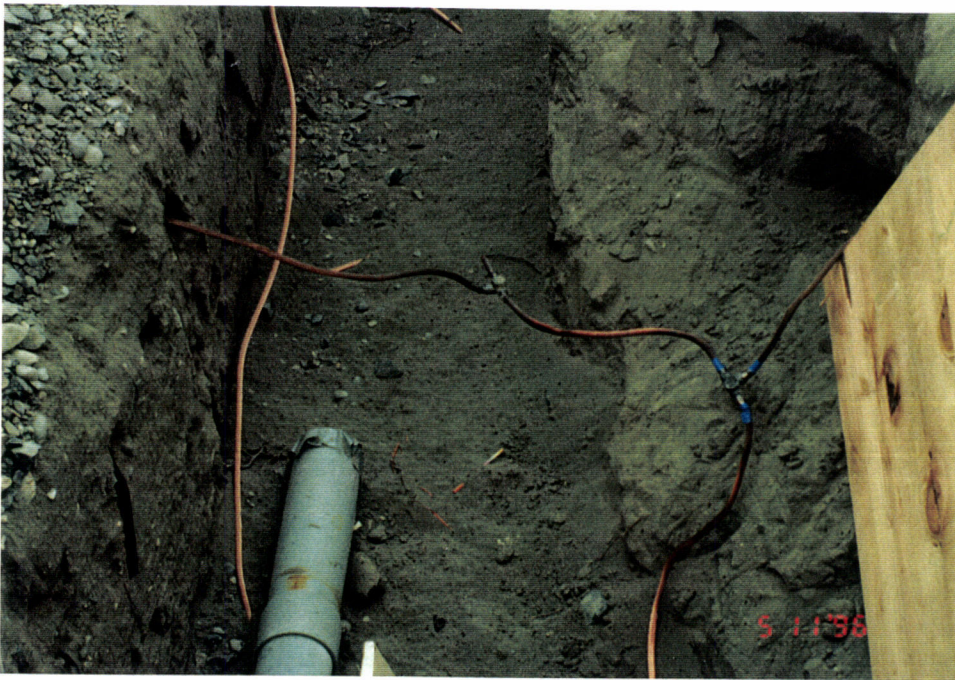
G960124-23-O-P

Pipe bed preparation for the Ductile-iron underground fire line crossing under the beam tube slab.



G960124-24-O-P

Fire line installed and ready for hydro test.



G960124-25-O-PV

Duct bank trench ,
previously damaged
grounding cable was
repaired.



G960124-26-O-PV

Benton PUD installed
fuse box near the
corner station.



G960124-27-O-PV

Benton PUD installed
electrical bake-out vault
near the corner station



G960124-28-O-P

Completed beam tube enclosure segment at the Acme precast yard



G960124-29-O-P

Exterior view of the beam tube enclosure segments.



G960124-30-O-P

Q/C work started for the beam tube enclosure segments.



G960124-31-O-P

CBI mobilizing their offices
at site.



G960124-32-O-P

CBI mobilizing their offices
at site.



G960124-33-O-P

CBI mobilizing their offices
at site.