

G960162-



G960162-01-O-P

Different views of the beam tube enclosure modules as they are set on to the beam tube access road in preparation for the mock up demonstration.

G960162-02-O-P



At the transformer side, verifying the integrity of the duct bank conduits and installing the pull rope for the future power cable installation.



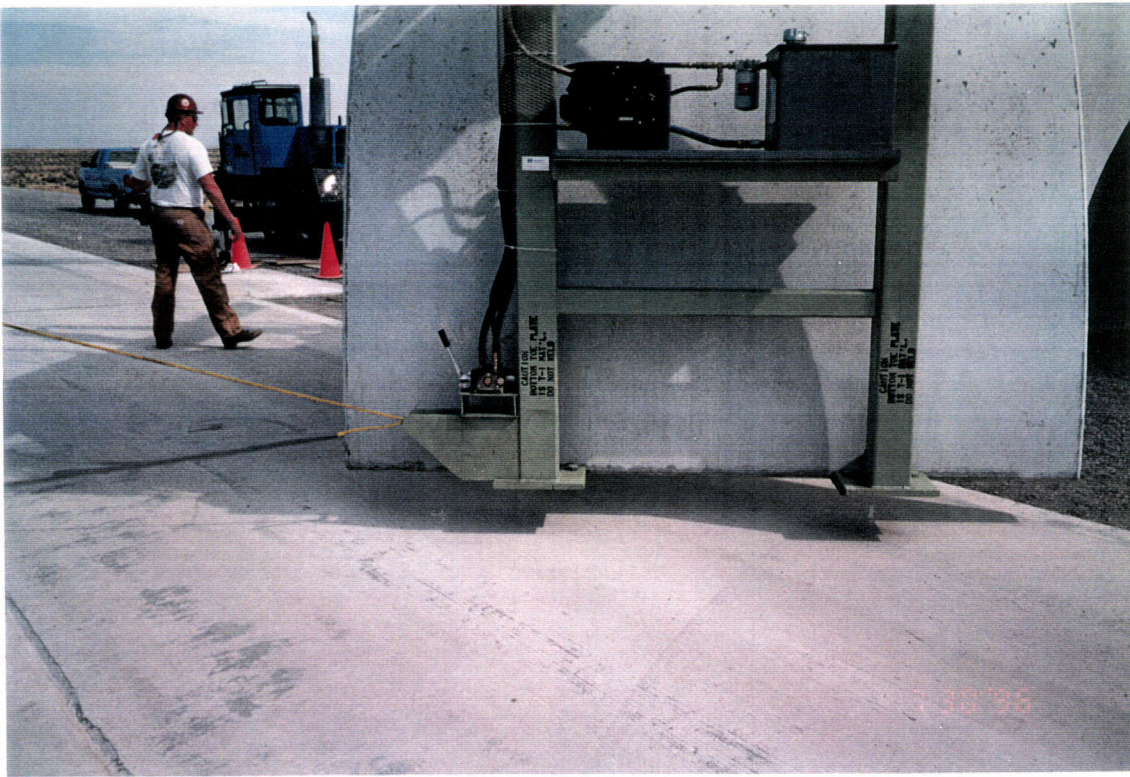
G960162- 03 - O-P

At the transformer side, verifying the integrity of the duct bank conduits and installing the pull rope for the future power cable installation.



G960162- 04 - O-P

Set up of the beam tube enclosure lifting device for lifting the enclosure module



G960162- 05 - O-P

Lifting the type "C" beam tube enclosure module for the mock up demonstration.



G960162- 06 - O-P

Beam tube enclosure module is set on to the beam tube support slab for the mock up demonstration.



G960162-07 - O-P

Beam tube enclosure module is set on to the beam tube support slab for the mock up demonstration.



G960162-08 - O-P



G960162-09 - O-P

View of the shim as it is set prior to setting the module, four each shims per each enclosure module. The shim thickness are 1/2", 1/4" and 1/8".



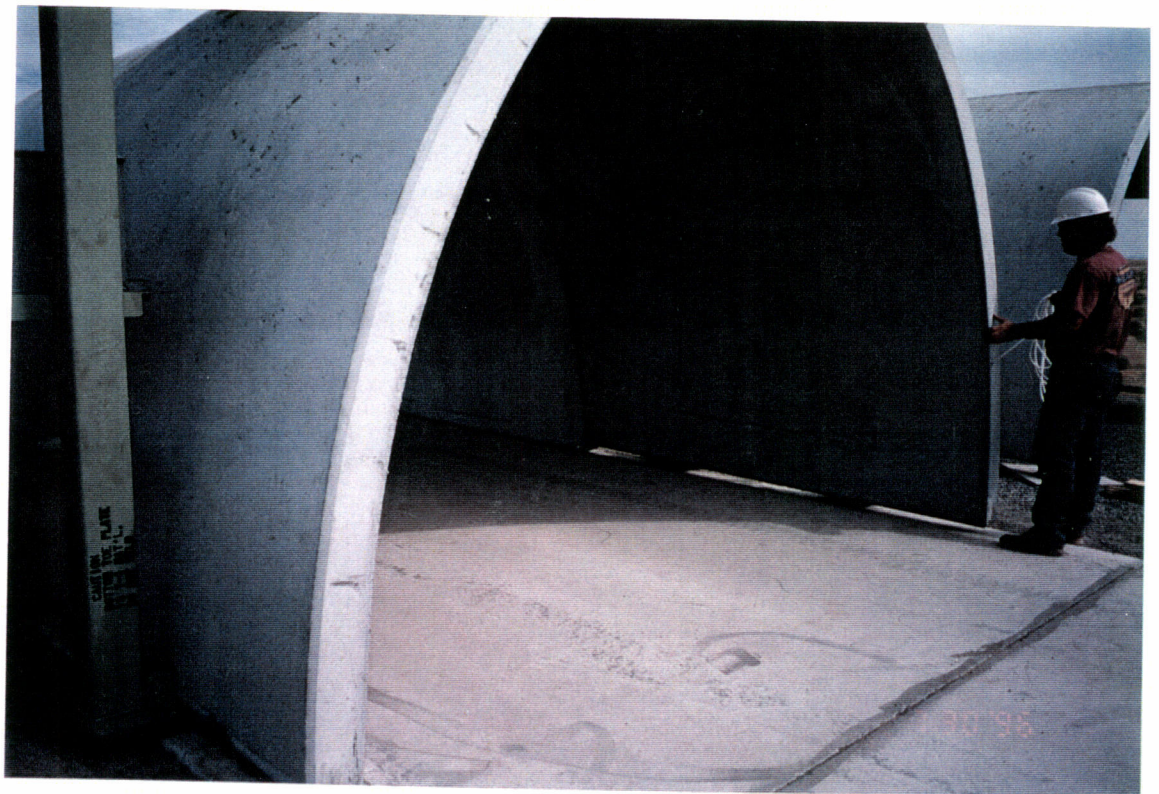
G960162-10 - O-P

The beam tube enclosure module is set onto the shims in the alignment groove.



G960162- 11 - OP

Both type "C" beam tube enclosure modules are set on to the beam tube support slab for the mock up demonstration.



G960162- 12 - OP

Both type "C" enclosure modules were aligned to each other to verify fit. The fit-up between the type "C" enclosure modules was acceptable.



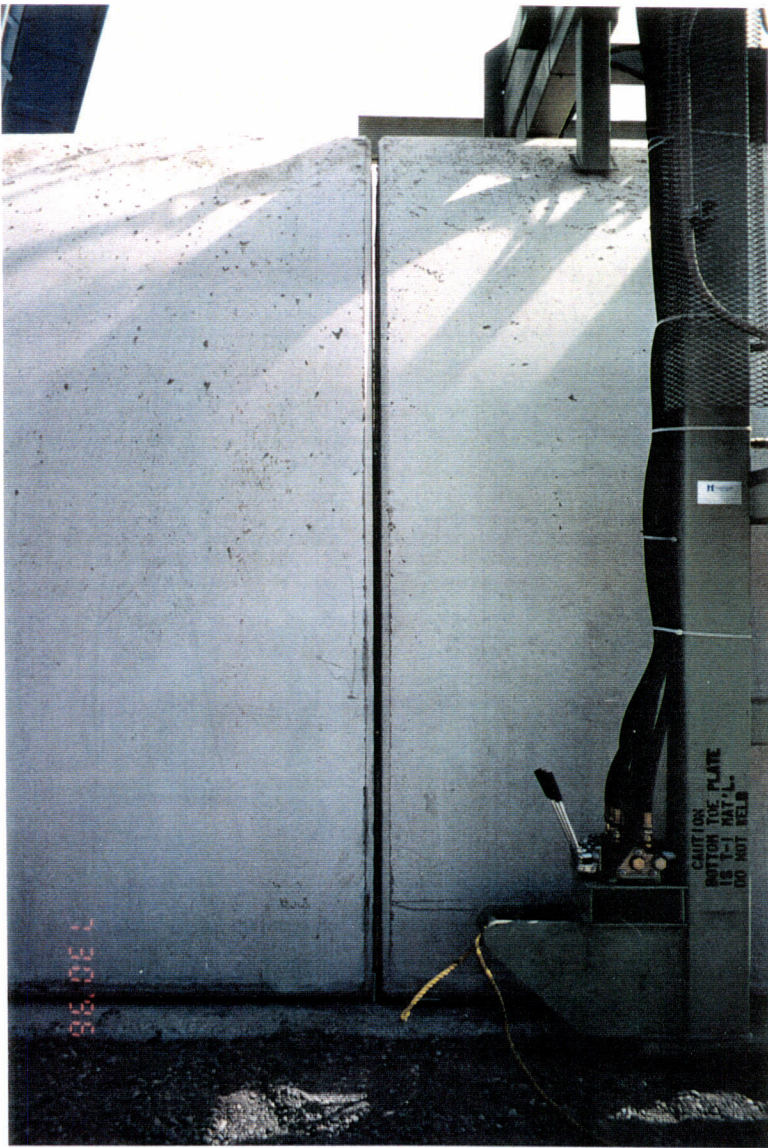
G960162- 13 - 0-P

The fit up between beam tube enclosure modules is verified as acceptable.



G960162- 14 - 0-P

The fit up between beam tube enclosure modules is verified as acceptable. The shim between the enclosure modules is serving as the required spacer.



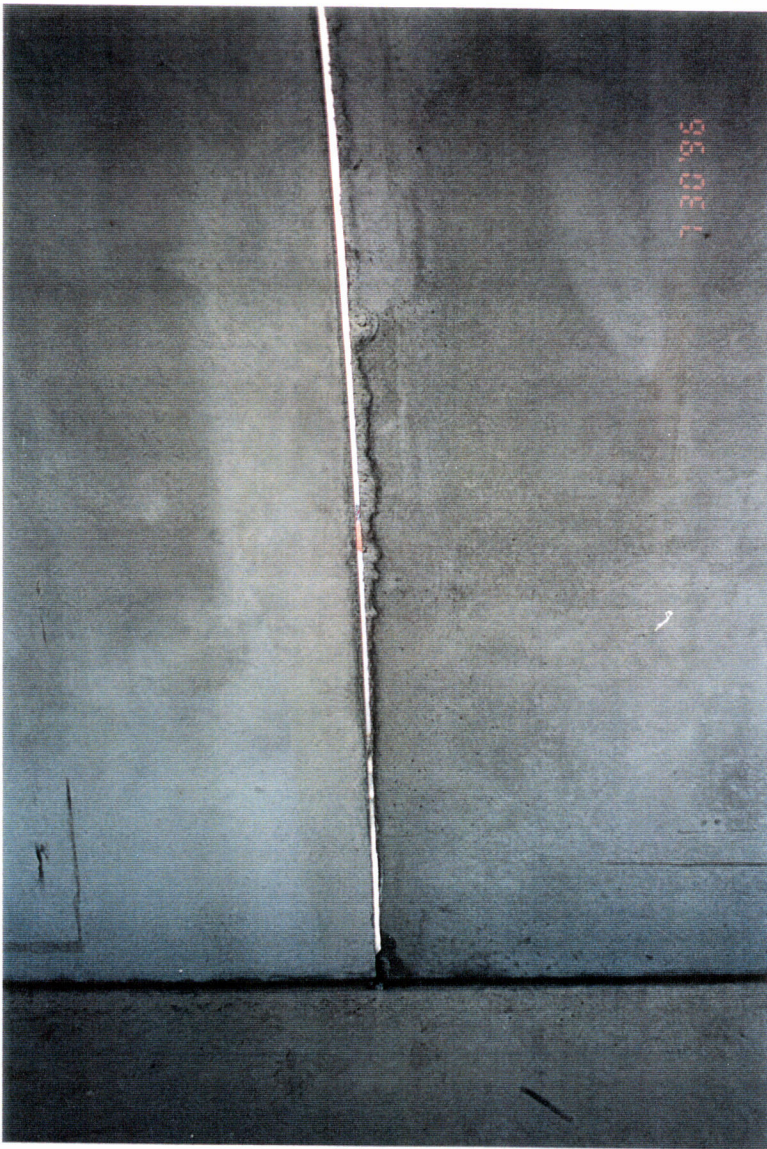
No Print
G960162- - O

The fit up between beam tube enclosure modules is verified as acceptable.

G960162-15 - O-P



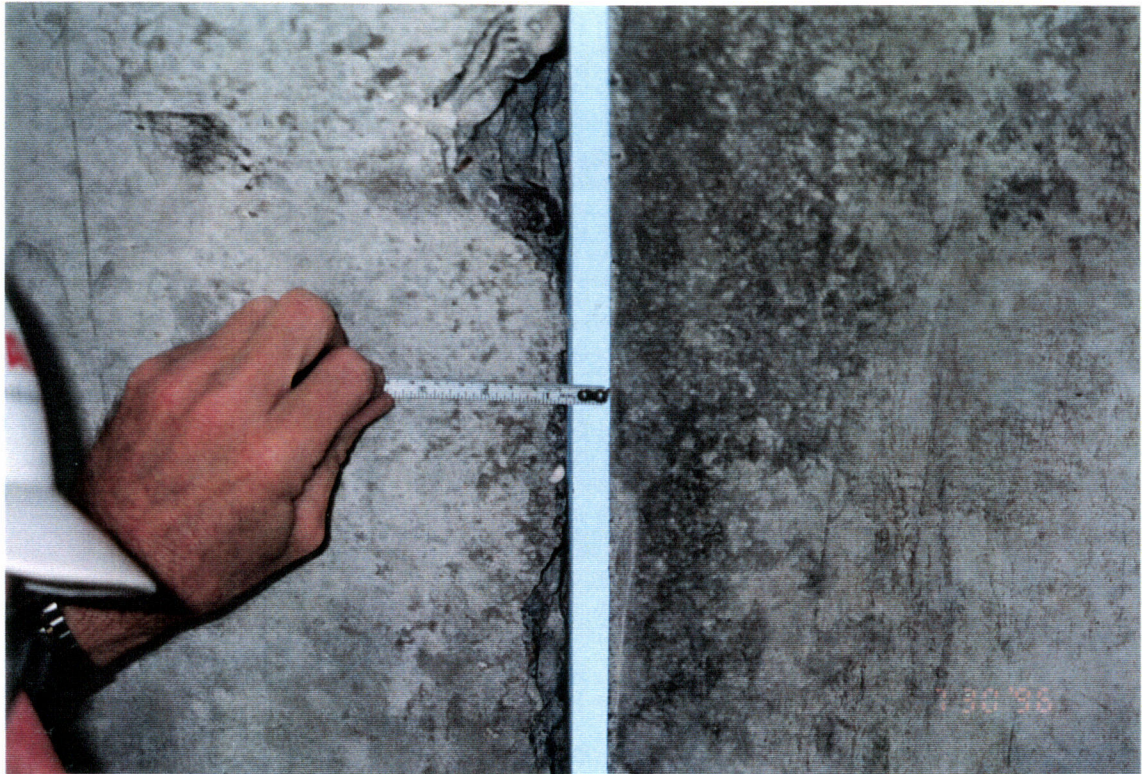
Alignment of the beam tube enclosure modules is verified as acceptable.



G960162- 16 - O-P

The fit up between beam tube enclosure modules is verified as acceptable.

G960162- 17 - O-P



The fit up between beam tube enclosure modules is verified as acceptable.



G960162- 18 - 0-P

One type "C" beam tube enclosure module is relocated to provide space for the type "A" beam tube enclosure module to be set next to the type "C" module.



G960162- 19 - 0-P

One type "C" beam tube enclosure module is relocated to provide space for the type "A" beam tube enclosure module to be set next to the type "C" module.



G960162-20 - O-P

Alignment of the beam tube enclosure modules is verified as acceptable.



G960162-21 - O-P

View of the beam tube lifting device to show the beam tube enclosure setting on to the beam tube support slab alignment groove.