

BEAM TUBE TECHNICAL REVIEW OUTLINE

Larry Jones, Technical Manager

April 15, 1997

Tube Production: Plan View and Photos

Tube Production History: Spiral Forming and Leak Testing

Tube Installation Photos

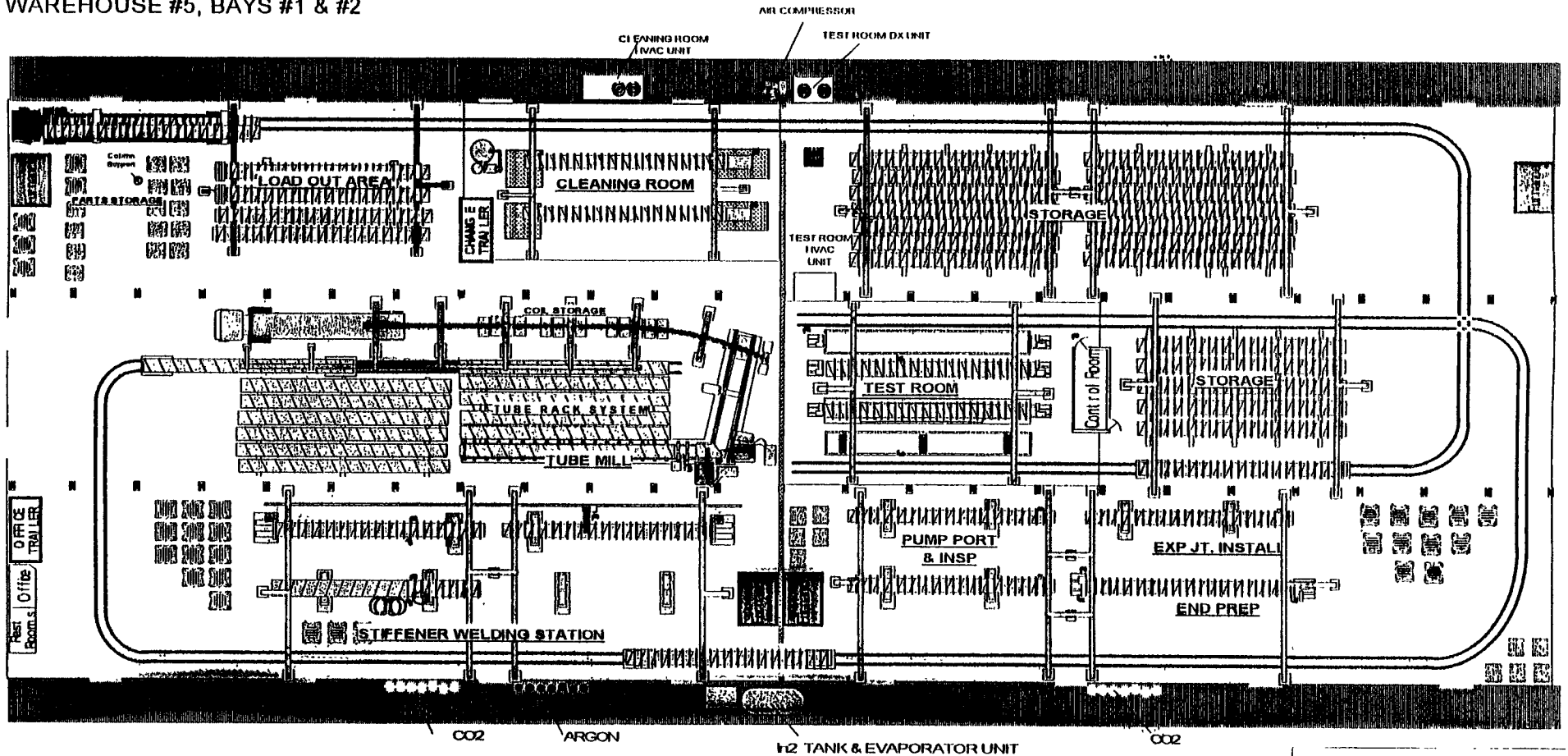
Tube Installation History

Tube Alignment & Module Leak Test Preparations

Louisiana Fabrication Shop Plans

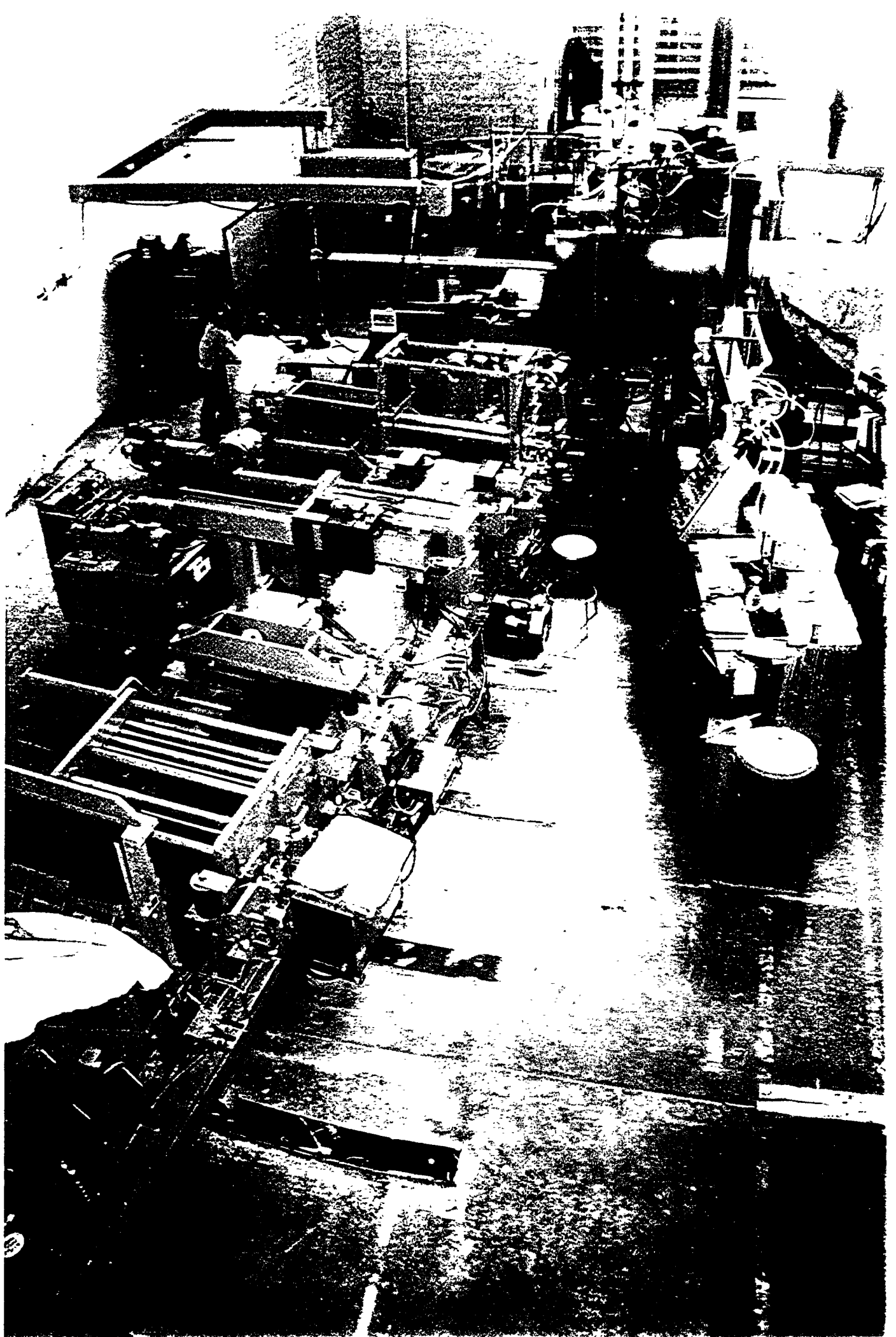
BIG PASCO

WAREHOUSE #5, BAYS #1 & #2

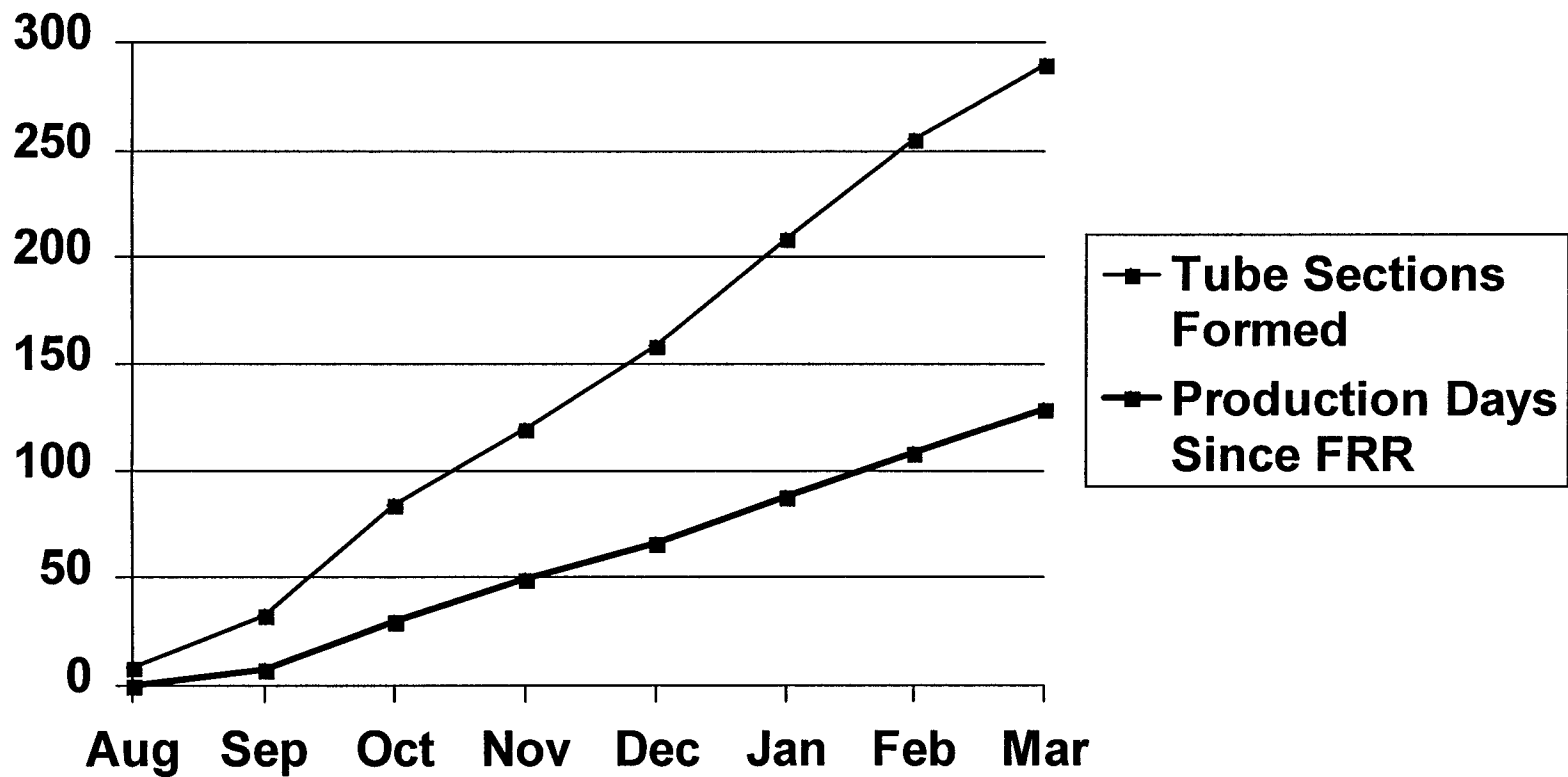


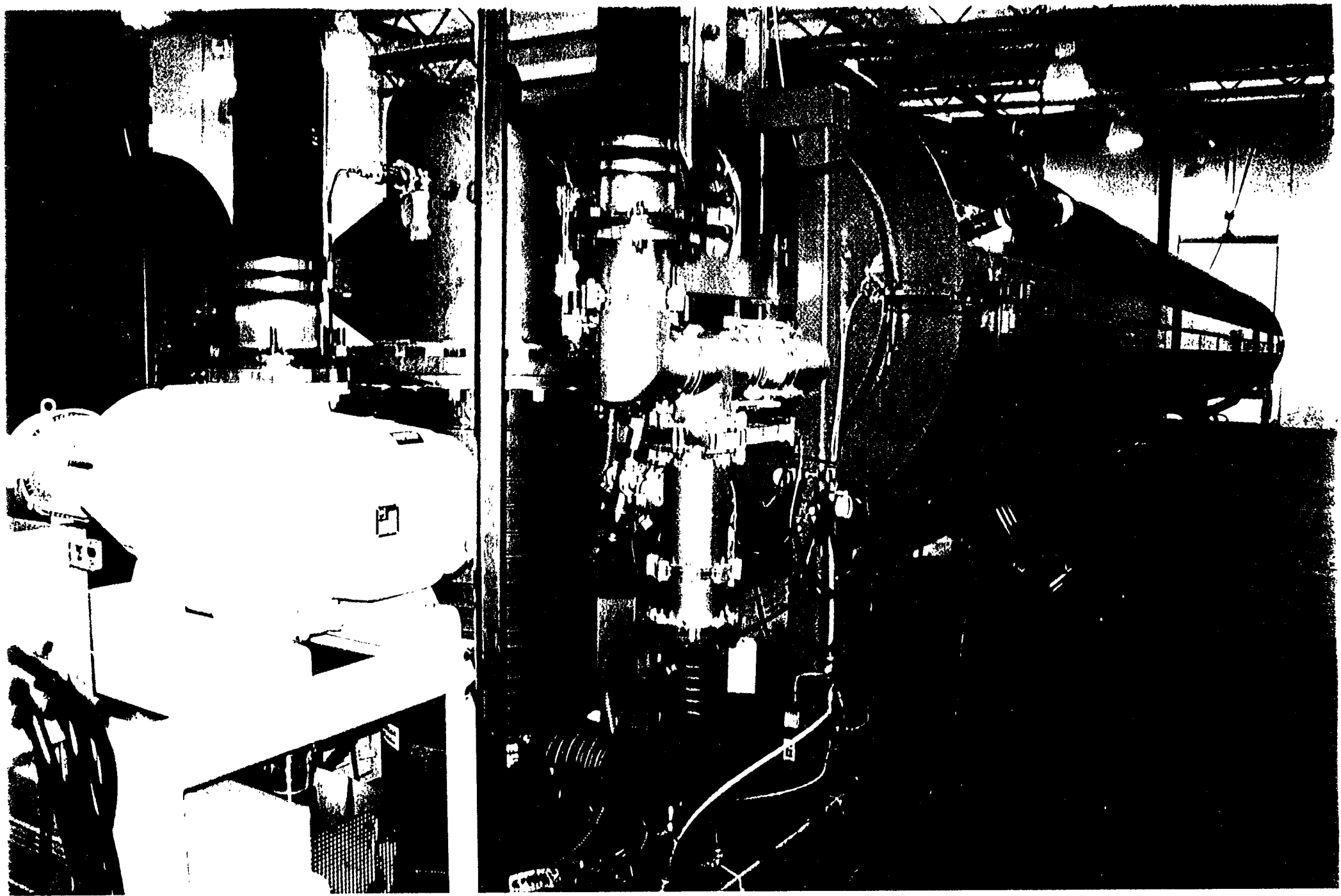
Rest Room's
Office
Trailer

HANFORD LOCATION	
FABRICATION FACILITY	
BIG PASCO WISE #5, BAYS 1 & 2	
PC181526	
Checked by	950671
By	DATE
Engineering Supervisor	DATE
BIGPAS01.CVS	

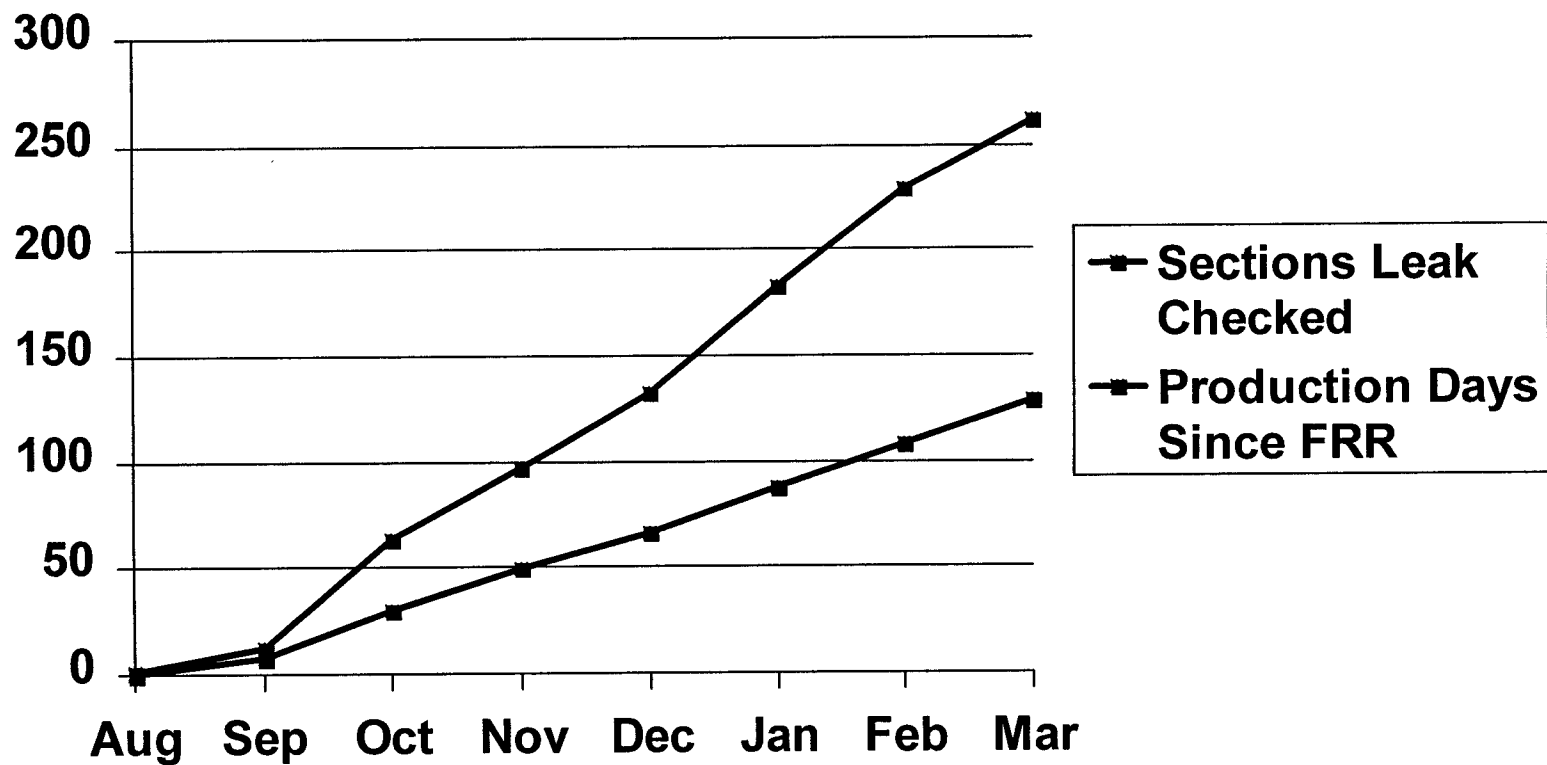


Tube Section Production Spiral Forming History

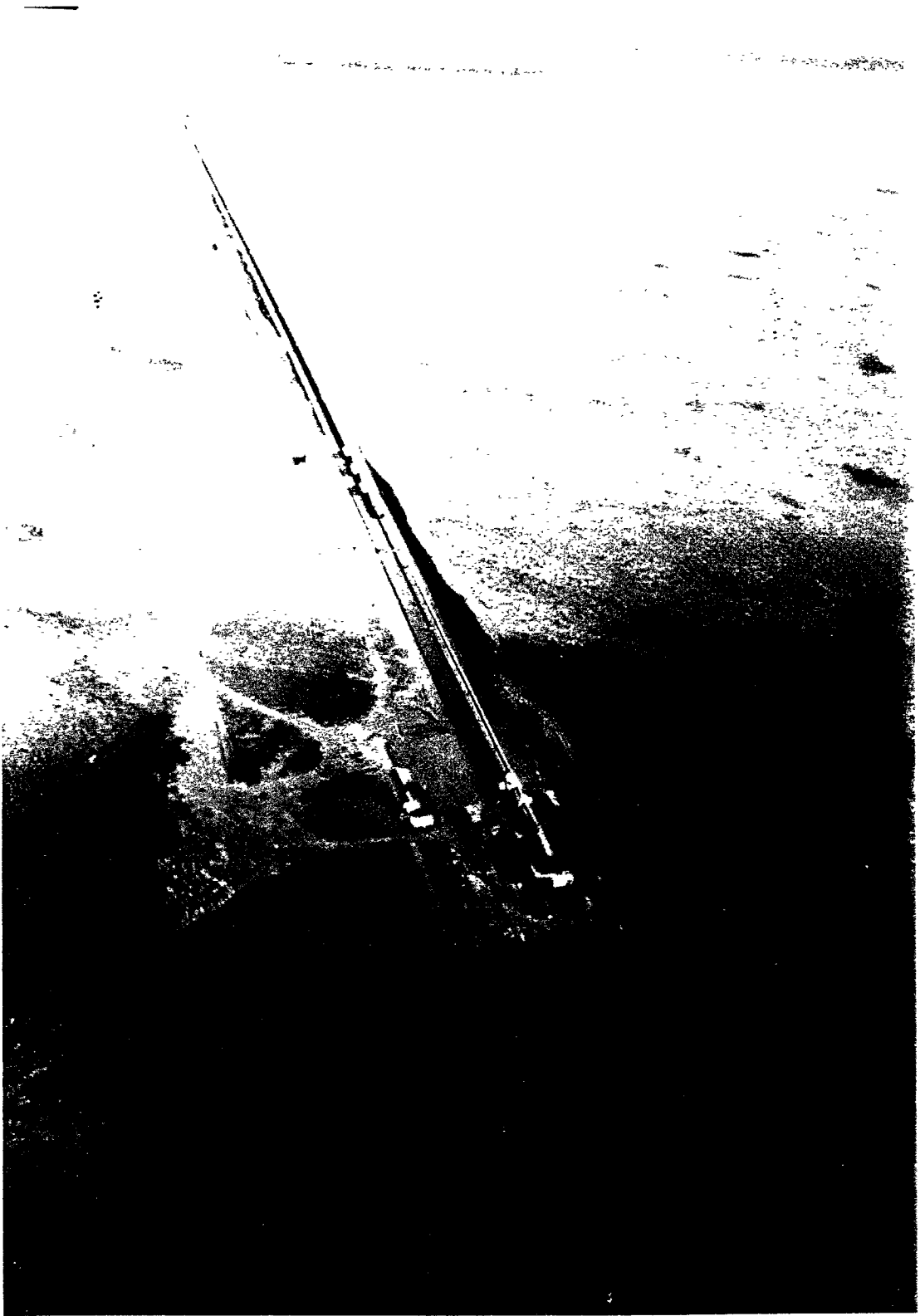




Tube Section Production Leak Check History



With over 17 miles of weld, zero tube sections failed leak test!



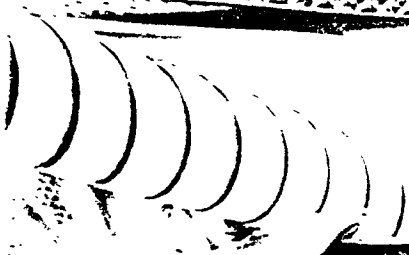
NO SMOKING

MA 001234567

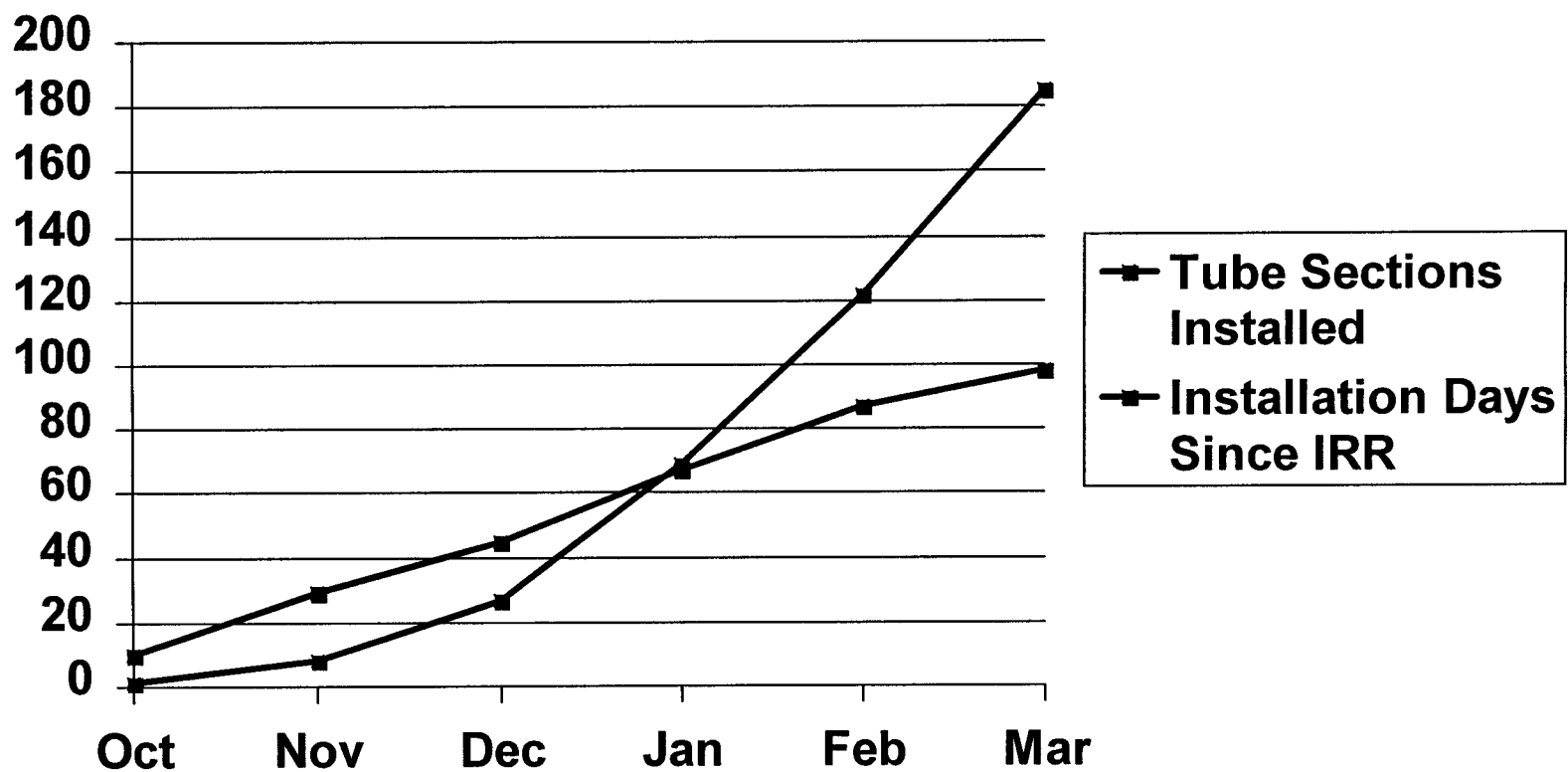
Handwritten scribbles and numbers on a dark surface.

3571
A-003
E-2

TESTING



Tube Section Field Installation History



With 185 sections installed, zero girth seams failed leak test!

Beam Tube Module Remaining New Activities

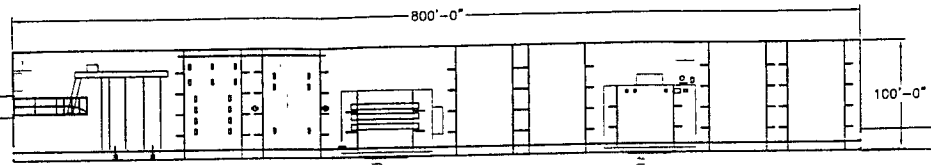
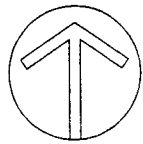
Final Alignment:

- ›› 14 tube supports have been final aligned to date

Module Leak Testing:

- ›› Equipment is being readied for starting module pumpdown on 4/28
- ›› Calibration and leakage measurement (by air signature) will occur in May

Amite River

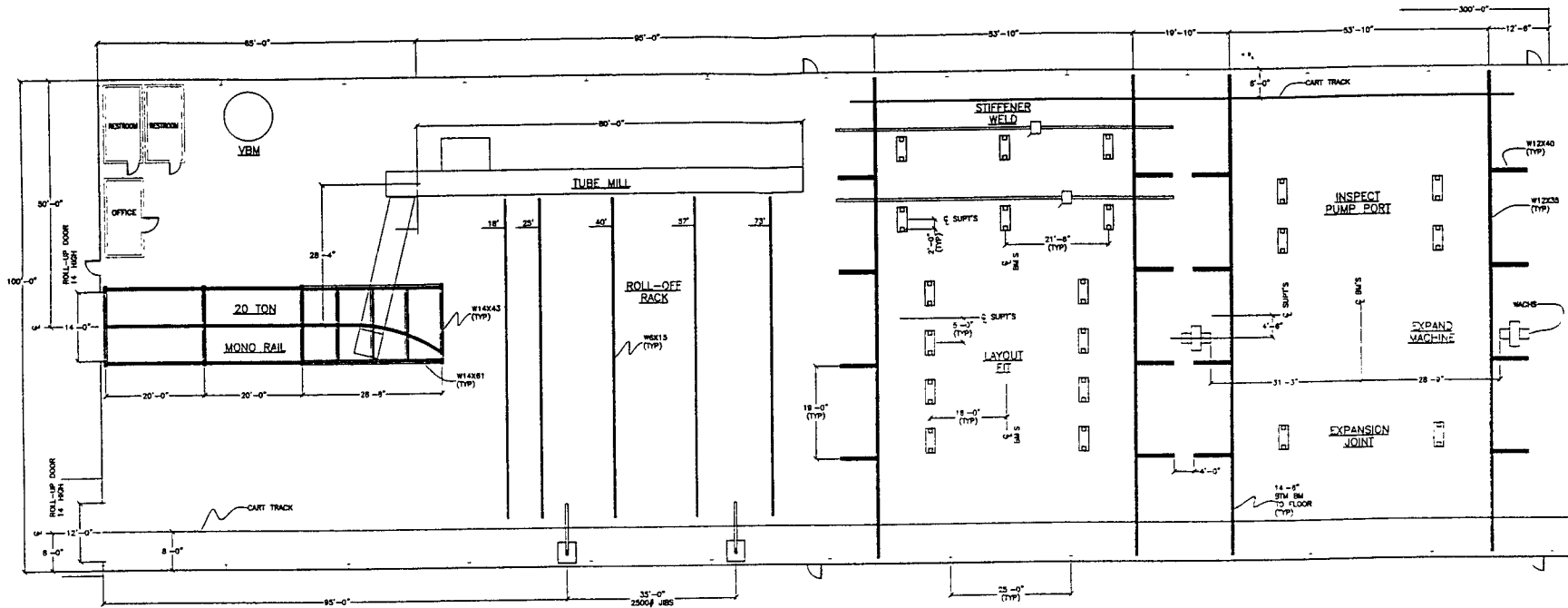


La. Hwy. 1019

MAGNOLIA BEACH PLAZA

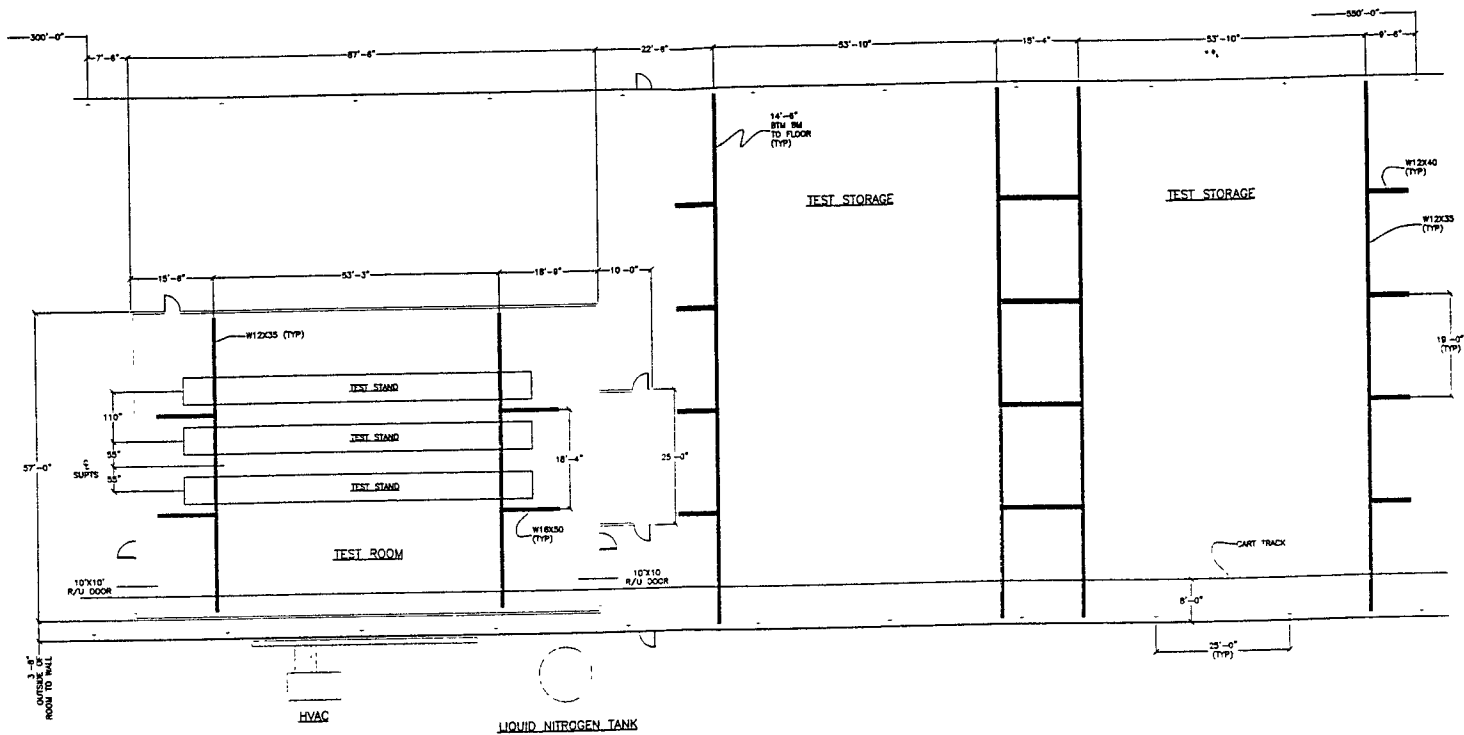
La. Hwy. 64

CBI	
LIGO-BEAM TUBE HANFORD, WA. & LIVINGSTON, LA.	
SITE PLAN LIVINGSTON FAB. FACILITY	
Customer's No.	Contract No.
By <u>W</u> Date <u>3/23/97</u>	Drawn By <u>LA-1</u>
Scale <u>AS SHOWN</u>	Sheet <u>1</u>
Engineering Supervisor	Sheet



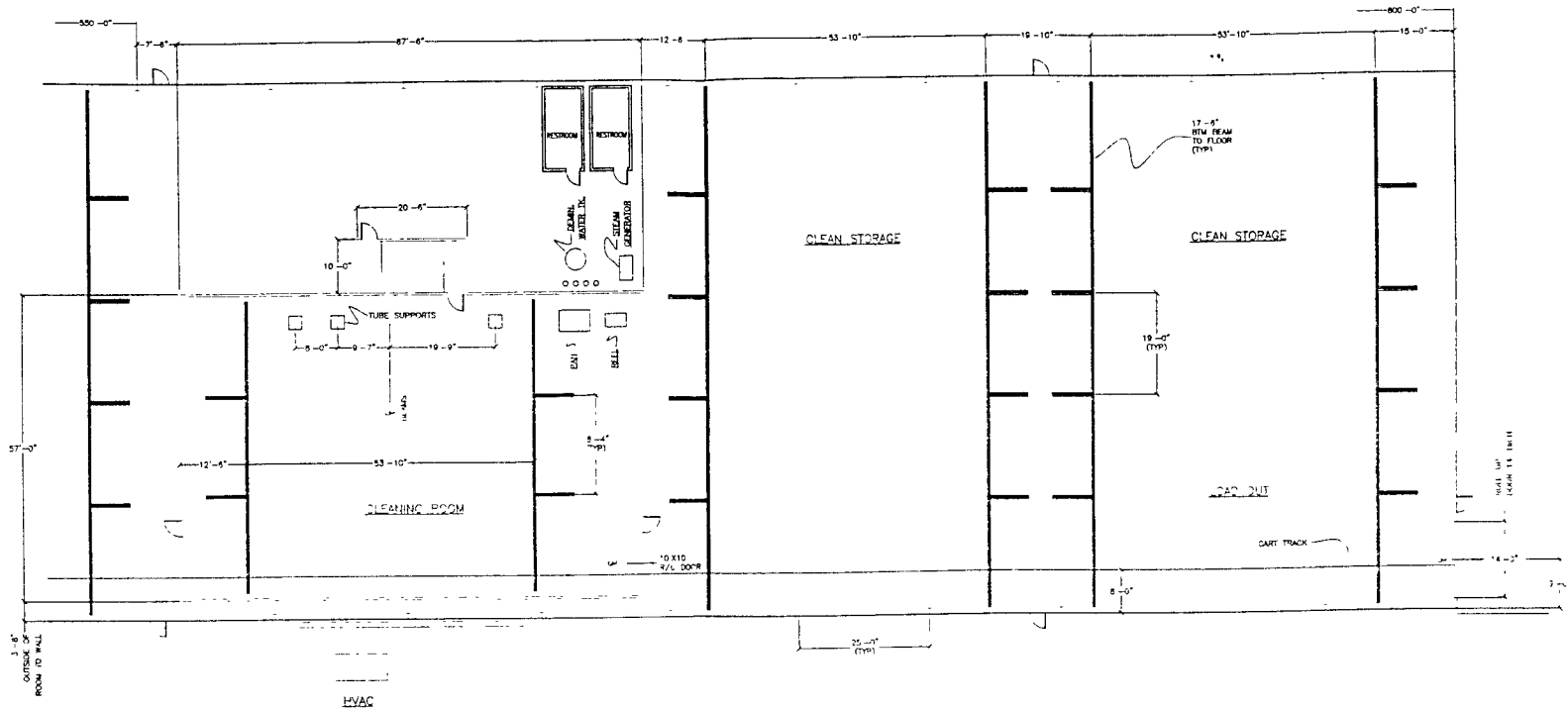
PLAN VIEW 0' TO 300'
LIVINGSTON FAB. FACILITY

LIGO-BEAM TUBE HANFORD, WA. & LIVINGSTON, LA. 0' - 300' LIVINGSTON FAB. FACILITY	
Customer's No. _____	Contract No. _____
By: <u>WJ</u> Date: <u>3/23/77</u>	Drawn: _____
By: <u>WJL</u> Date: _____	Checked: _____
By: _____ Date: _____	Sheet: _____



PLAN VIEW 300' TO 550'
LIVINGSTON FAB. FACILITY

(CBI)	
LIGO-BEAM TUBE HANFORD, WA. & LIVINGSTON, LA. 300' - 550' LIVINGSTON FAB. FACILITY	
Customer's No.	Control No.
By: <u>W</u> <u>CHD</u> <u>KID</u> Date: <u>3/23/97</u>	Doc No. <u>LA-3</u>
Engineering Supervisor: <u>ISE PENSE</u>	Sheet: <u>1</u>



PLAN VIEW 550' TO 800'
LIVINGSTON FAB FACILITY

(CBI)			
LIGO-BEAM TUBE HANFORD, WA. & LIVINGSTON, LA. 550' - 800' LIVINGSTON FAB FACILITY			
Contract # No.	Client	Date	Contract No.
By: WJ	CS	1/21/97	
FOR PRINT		Draw No.	J-4
Engineering Supervisor		Sheet	