

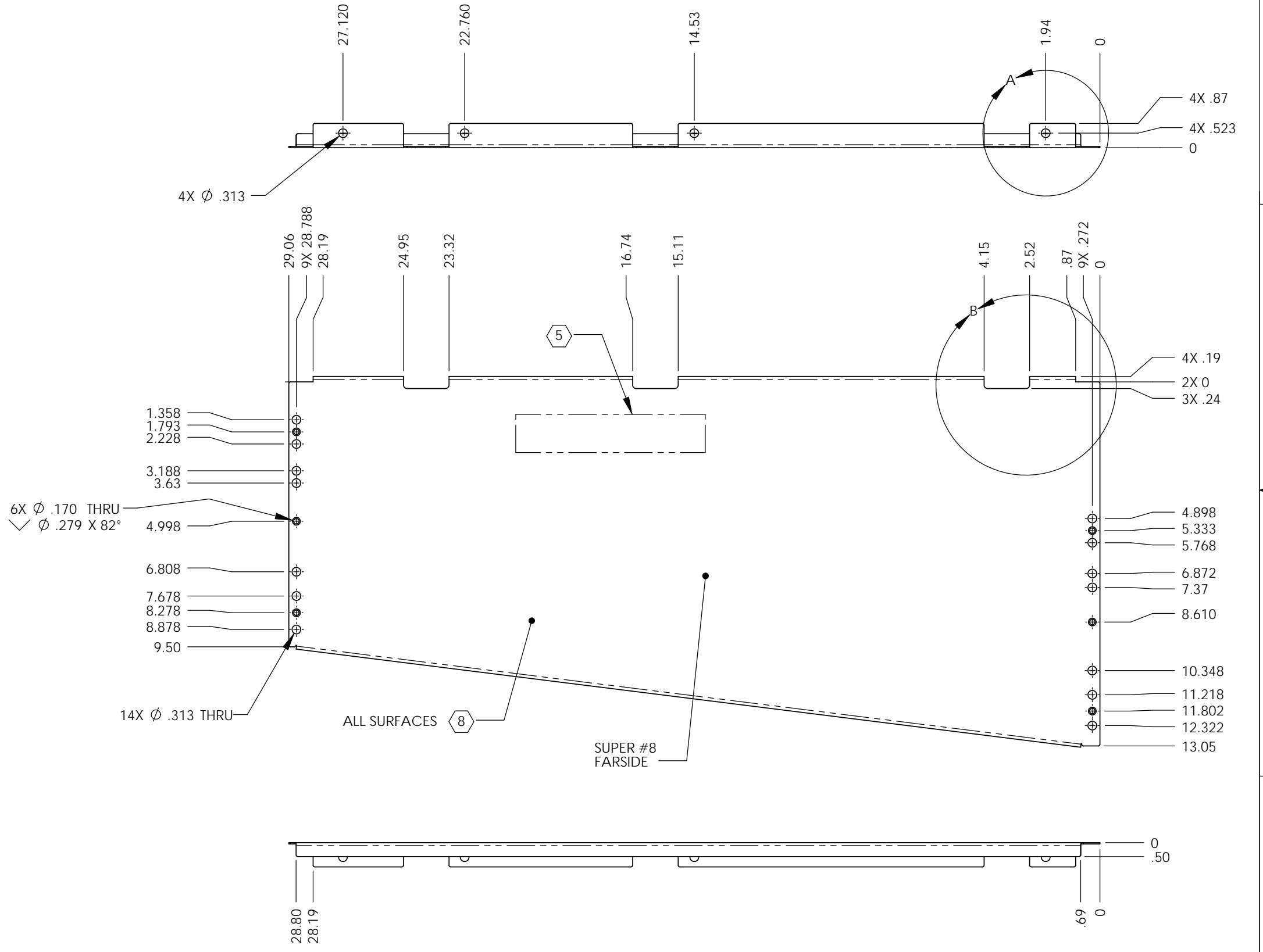
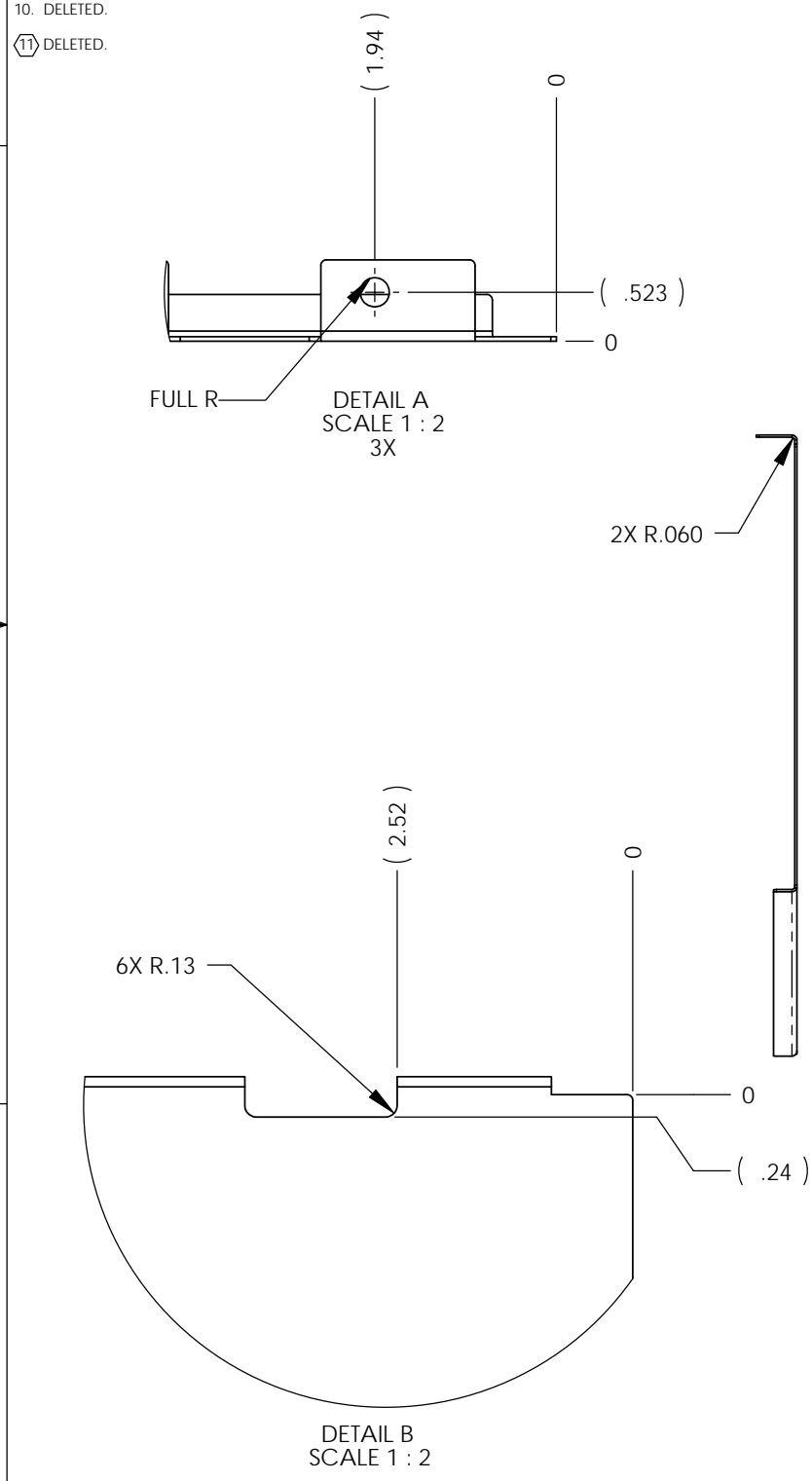
D1100327_AdlIGO_AOS_SLC_ACB Left Side Panel, PART PDM REV: X-015, DRAWING PDM REV: X-026

- NOTES CONTINUED:
- 5) MECHANICALLY STAMP (NO INKS OR DYES) PART NUMBER, REVISION AND SERIAL NUMBER .20 DEEP WITH MINIMUM CHARACTER HEIGHT .156 APPROXIMATELY WHERE SHOWN. SERIAL NUMBER WILL START AT 001 AND PROCEED CONSECUTIVELY. EXAMPLE: D100XXXX-V1
S/N 001
 - 6. ALL PARTS SHALL BE MANUFACTURED IN ACCORDANCE WITH LIGO SPECIFICATION E0900364.
 - 7. ALL MATERIAL IS TO BE VIRGIN MATERIAL (i.e. NO WELD REPAIRS, PLUGS OR RECYCLED MATERIAL). NO REPAIRS SHALL BE MADE UNLESS APPROVED IN ADVANCE, AND IN WRITING, BY LIGO LABORATORY. REFER TO LIGO-E0900364.
 - 8) SURFACE FINISH TO BE AS-PROCESSED FROM MILL/SUPPLIER, FREE FROM SCRATCHES OR GOUGES.
 - 9) DELETED.
 - 10. DELETED.
 - 11) DELETED.

REV.	DATE	DCN #	DRAWING TREE #
v1	04 MAR 2011	-	-
v2	07 APR 2011	E1100216	-
v3	25 JUN 2011	E1100335	-
v4	7 SEP 2011	E1100335	-

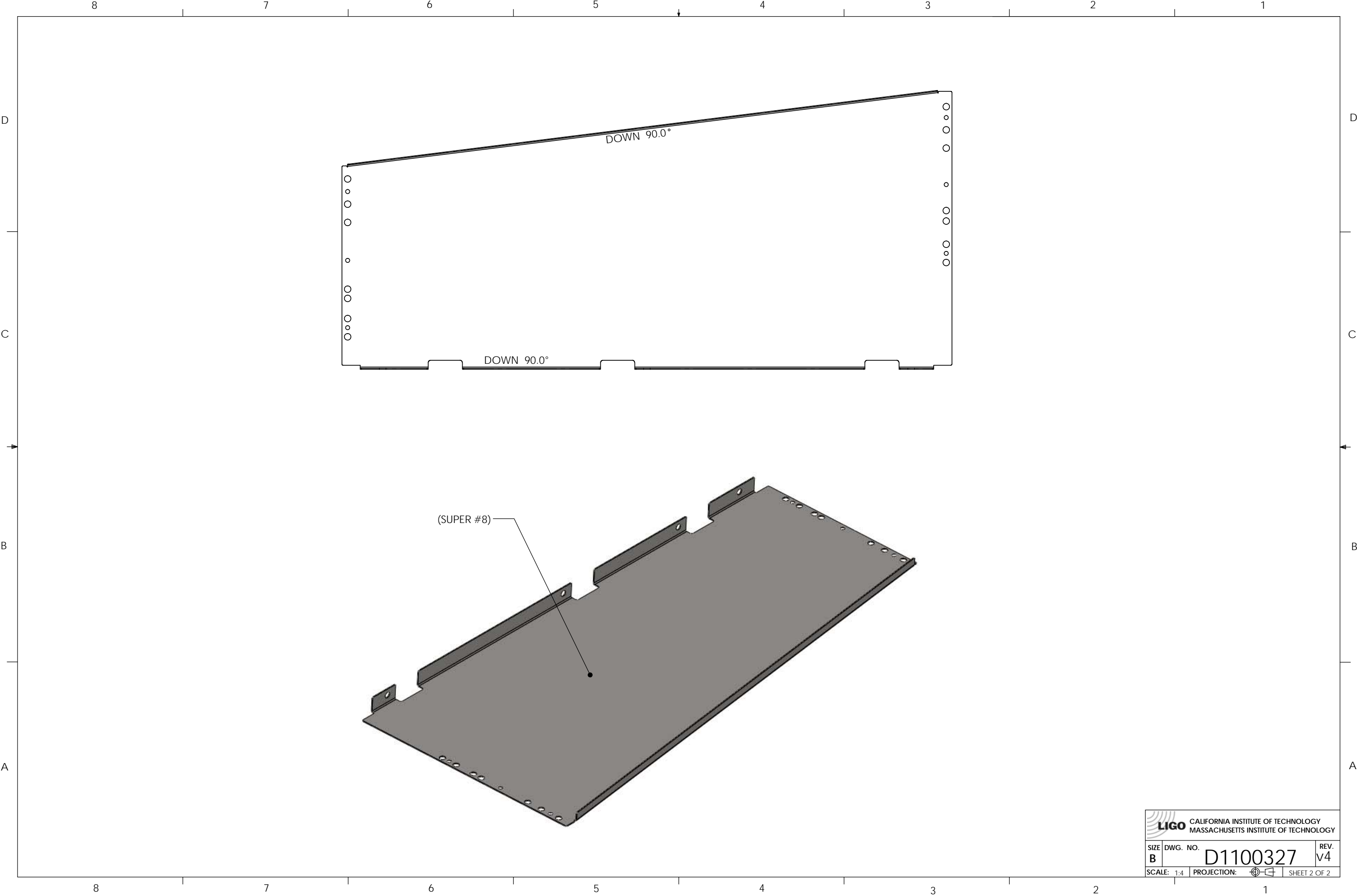
D
C
B
A


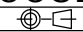
D
C
B
A



NOTES AND TOLERANCES: (UNLESS OTHERWISE SPECIFIED)				LIGO CALIFORNIA INSTITUTE OF TECHNOLOGY MASSACHUSETTS INSTITUTE OF TECHNOLOGY		PART NAME	
DIMENSIONS ARE IN INCHES		1. INTERPRET DRAWING PER ASME Y14.5-1994. 2. REMOVE ALL SHARP EDGES. .005-.015 ON ALL EDGES AND HOLES. 3. DO NOT SCALE FROM DRAWING. 4. ALL MACHINING FLUIDS MUST BE FULLY SYNTHETIC, FULLY WATER SOLUBLE AND FREE OF SULFUR, SILICONE, AND CHLORINE.		SYSTEM ADVANCED LIGO		SUB-SYSTEM AOS	
TOLERANCES: .XX ± .03 .XXX ± .015		MATERIAL 18 GAUGE 304 SSSL		FINISH 8 SUPER #8		NEXT ASSY D1100391	
ANGULAR ± 1.0°				DESIGNER N.Nguyen 24 Feb 2011		SIZE DWG. NO. B D1100327	
				DRAFTER N. KILPATRICK 03 MAR 2011		REV. v4	
				CHECKER		SCALE: 1:4 PROJECTION: 1st Angle SHEET 1 OF 2	
				APPROVAL			

D1100327_AdLIGO_AOS_SLC_ACB Left Side Panel, PART PDM REV: X-015, DRAWING PDM REV: X-026



		CALIFORNIA INSTITUTE OF TECHNOLOGY MASSACHUSETTS INSTITUTE OF TECHNOLOGY	
SIZE B	DWG. NO. D1100327	REV. v4	
SCALE: 1:4	PROJECTION: 	SHEET 2 OF 2	