

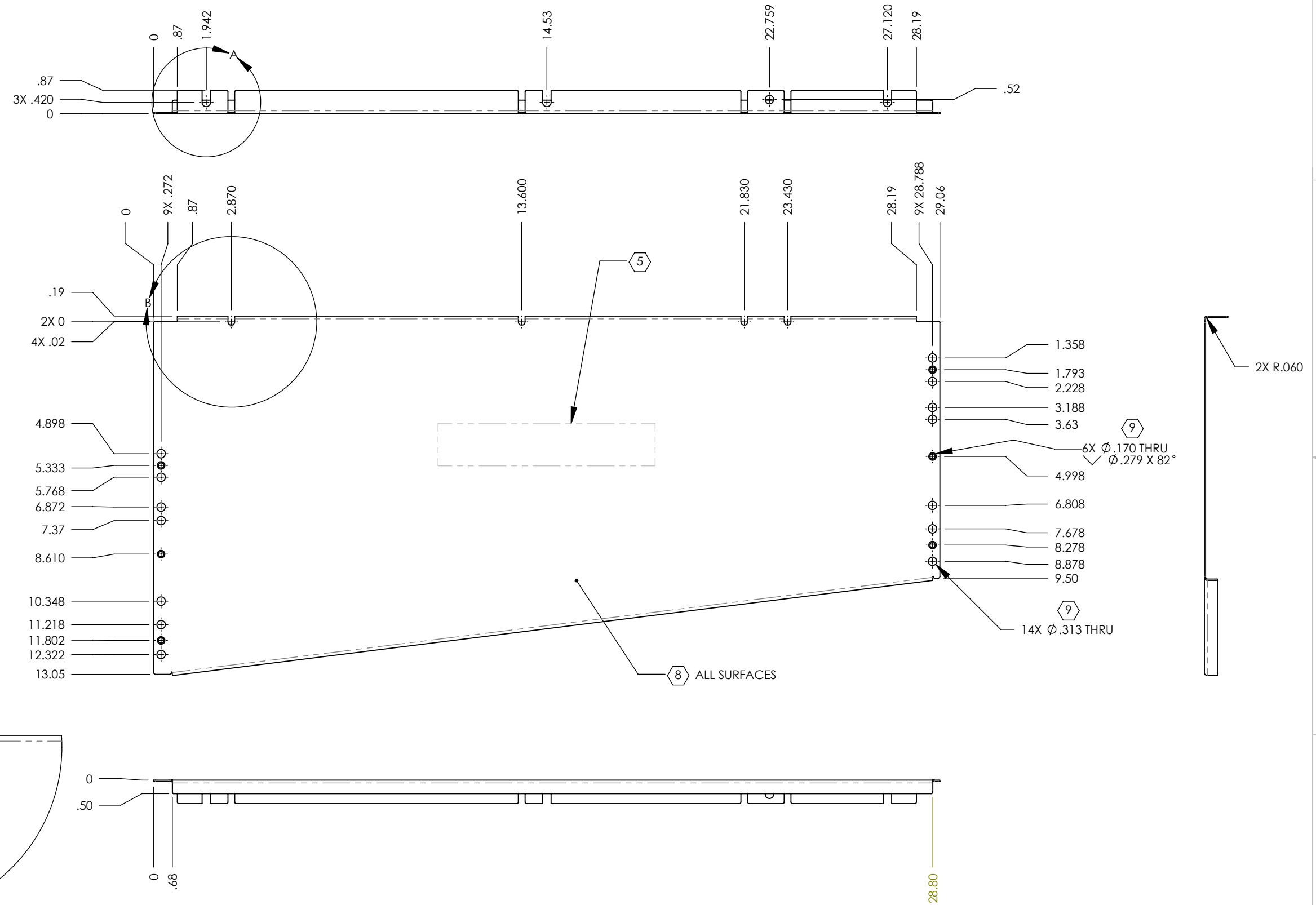
D1100340_AdlIGO_AOS_SLC_ACB Right Side Panel, PART PDM REV: X-015, DRAWING PDM REV: X-008

- NOTES CONTINUED:**
- 5. MECHANICALLY STAMP (NO INKS OR DYES) PART NUMBER, REVISION AND SERIAL NUMBER .20 DEEP WITH MINIMUM CHARACTER HEIGHT .156 APPROXIMATELY WHERE SHOWN. SERIAL NUMBER WILL START AT 001 AND PROCEED CONSECUTIVELY. EXAMPLE: D100XX-V1 S/N 001
 - 6. ALL PARTS SHALL BE MANUFACTURED IN ACCORDANCE WITH LIGO SPECIFICATION E0900364.
 - 7. ALL MATERIAL IS TO BE VIRGIN MATERIAL (i.e. NO WELD REPAIRS, PLUGS OR RECYCLED MATERIAL). NO REPAIRS SHALL BE MADE UNLESS APPROVED IN ADVANCE, AND IN WRITING, BY LIGO LABORATORY. REFER TO LIGO-E0900364.
 - 8. SURFACE FINISH TO BE AS-PROCESSED FROM MILL/SUPPLIER, FREE FROM SCRATCHES OR GOUGES.
 - 9. PART WILL BE PORCELAIN COATED PER LIGO SPECIFICATION E1000083 AFTER FABRICATION, THE INDICATED HOLES & SLOTS WILL BE MASKED PRIOR TO PORCELAIN COATING TO APPROXIMATELY 2.5-3X HOLE & SLOT CENTERED ON BOTH SIDES OF THE HOLE & SLOT.
 - 10. DIMENSIONS APPLY BEFORE PORCELAIN COATING UNLESS SPECIFIED.

REV.	DATE	DCN #	DRAWING TREE #
v1	08 MAR 2011	-	-
v2	08 APR 2011	E1100216	-
-	-	-	-

D
C
B
A

D
C
B
A



NOTES AND TOLERANCES: (UNLESS OTHERWISE SPECIFIED)

DIMENSIONS ARE IN INCHES

TOLERANCES:
 .XX ± .03
 .XXX ± .015
 ANGULAR ± 1.0°

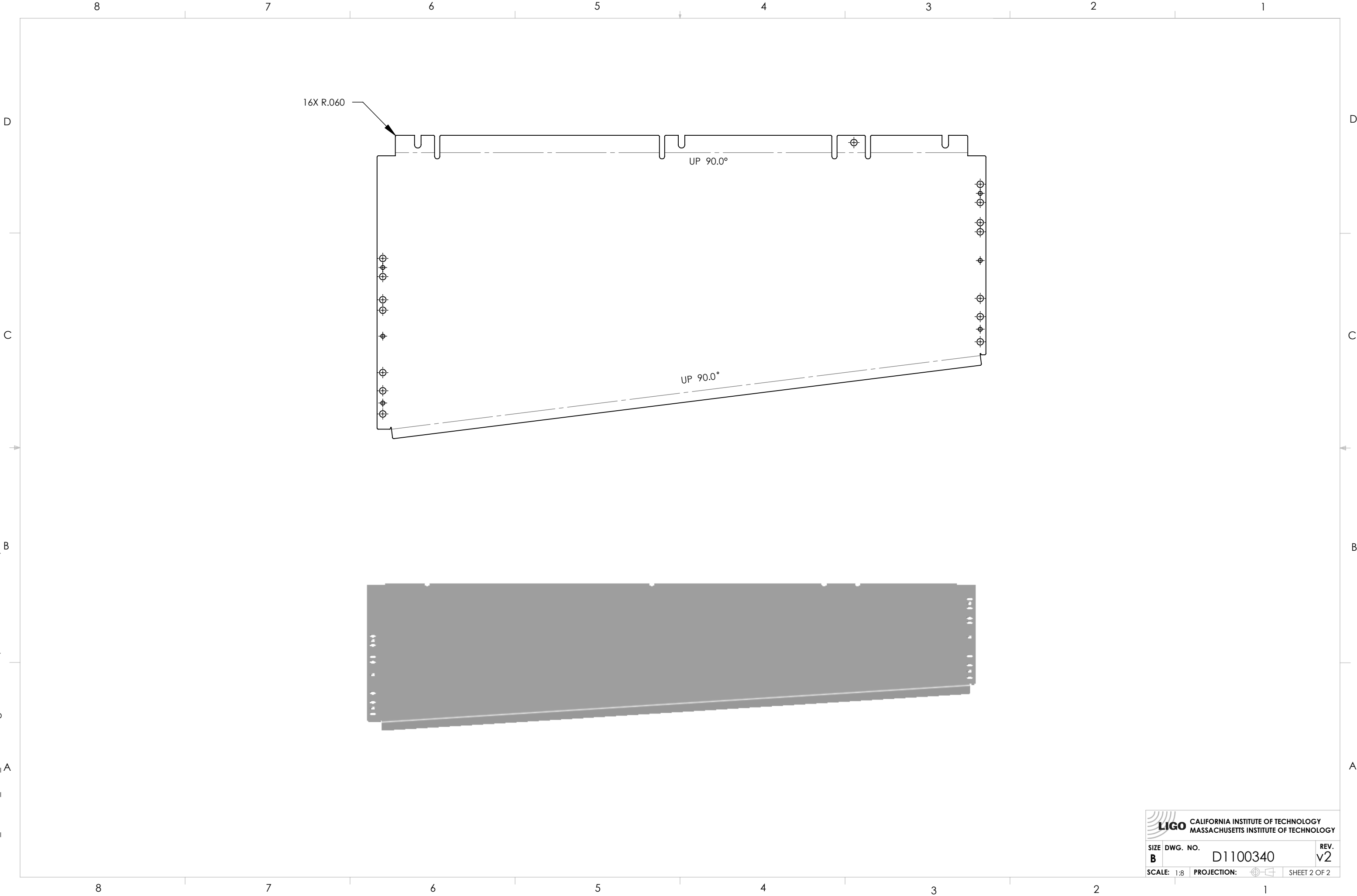
1. INTERPRET DRAWING PER ASME Y14.5-1994.
 2. REMOVE ALL SHARP EDGES, .005-.015, FOR MACHINED PARTS. ROUND ALL EDGES APPROXIMATELY R.02 FOR SHEET METAL PARTS.
 3. DO NOT SCALE FROM DRAWING.
 4. ALL MACHINING FLUIDS MUST BE FULLY SYNTHETIC, FULLY WATER SOLUBLE AND FREE OF SULFUR, SILICONE, AND CHLORINE.

MATERIAL 18 GA ENAMEL STEEL A424 **FINISH** 8 9

CALIFORNIA INSTITUTE OF TECHNOLOGY MASSACHUSETTS INSTITUTE OF TECHNOLOGY		PART NAME ACB RIGHT SIDE PANEL	
SYSTEM ADVANCED LIGO	SUB-SYSTEM AOS	DESIGNER N.Nguyen 24 Feb 2011	SIZE DWG. NO. B D1100340
DRAFTER N. KILPATRICK 08 MAR 2011	CHECKER	APPROVAL	REV. v2
MATERIAL 18 GA ENAMEL STEEL A424		SCALE: 1:4 PROJECTION:	
NEXT ASSY D1100391		SHEET 1 OF 2	

8 7 6 5 4 3 2 1

D1100340_AdLIGO_AOS_SLC_ACB Right Side Panel, PART PDM REV: X-015, DRAWING PDM REV: X-008



 CALIFORNIA INSTITUTE OF TECHNOLOGY MASSACHUSETTS INSTITUTE OF TECHNOLOGY		
SIZE	DWG. NO.	REV.
B	D1100340	v2
SCALE: 1:8	PROJECTION:	SHEET 2 OF 2