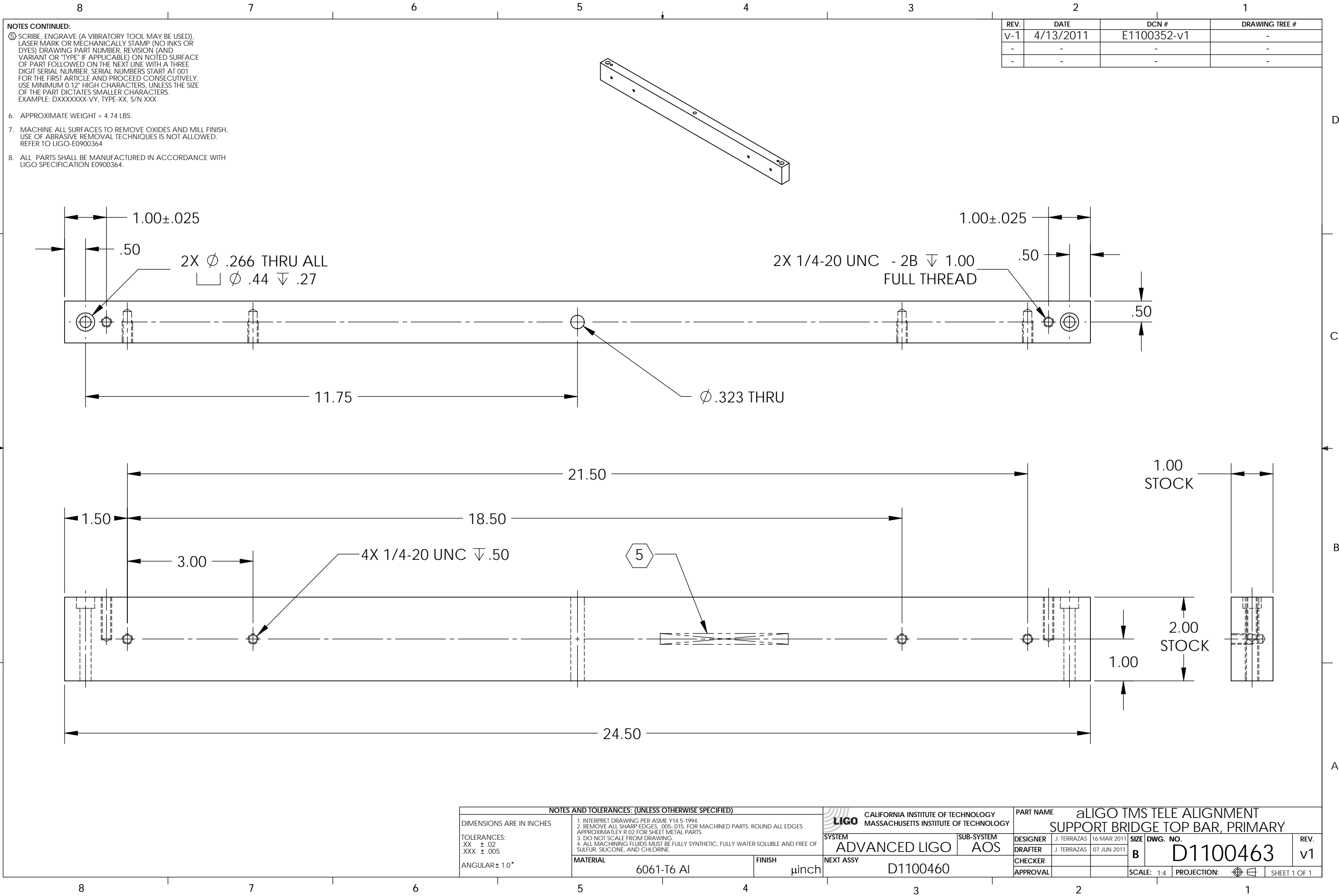


D1100463\_aLIGO TMS TELE ALIGNMENT SUPPORT BRIDGE TOP BAR, PRIMARY, PART PDM REV: X-015, DRAWING PDM REV: X-015



- NOTES CONTINUED:**
- 5. SCRIBE, ENGRAVE (A VIBRATORY TOOL MAY BE USED), LASER MARK OR MECHANICALLY STAMP (NO INKS OR DYES) DRAWING PART NUMBER, REVISION (AND VARIANT OR "TYPE" IF APPLICABLE) ON NOTED SURFACE OF PART FOLLOWED ON THE NEXT LINE WITH A THREE DIGIT SERIAL NUMBER. SERIAL NUMBERS START AT 001 FOR THE FIRST ARTICLE AND PROCEED CONSECUTIVELY. USE MINIMUM 0.12" HIGH CHARACTERS, UNLESS THE SIZE OF THE PART DICTATES SMALLER CHARACTERS. EXAMPLE: DXXXXXX-VY, TYPE-XX, S/N XXX
  - 6. APPROXIMATE WEIGHT = 4.74 LBS.
  - 7. MACHINE ALL SURFACES TO REMOVE OXIDES AND MILL FINISH. USE OF ABRASIVE REMOVAL TECHNIQUES IS NOT ALLOWED. REFER TO LIGO-E0900364
  - 8. ALL PARTS SHALL BE MANUFACTURED IN ACCORDANCE WITH LIGO SPECIFICATION E0900364.

REV.	DATE	DCN #	DRAWING TREE #
v-1	4/13/2011	E1100352-v1	-
-	-	-	-
-	-	-	-

NOTES AND TOLERANCES: (UNLESS OTHERWISE SPECIFIED)				LIGO CALIFORNIA INSTITUTE OF TECHNOLOGY MASSACHUSETTS INSTITUTE OF TECHNOLOGY		PART NAME	
DIMENSIONS ARE IN INCHES TOLERANCES: .XX ± .02 .XXX ± .005 ANGULAR ± 1.0°				1. INTERPRET DRAWING PER ASME Y14.5-1994. 2. REMOVE ALL SHARP EDGES, .005-.015, FOR MACHINED PARTS. ROUND ALL EDGES APPROXIMATELY R.02 FOR SHEET METAL PARTS. 3. DO NOT SCALE FROM DRAWING. 4. ALL MACHINING FLUIDS MUST BE FULLY SYNTHETIC, FULLY WATER SOLUBLE AND FREE OF SULFUR, SILICONE, AND CHLORINE.		<b>aLIGO TMS TELE ALIGNMENT SUPPORT BRIDGE TOP BAR, PRIMARY</b>	
MATERIAL		FINISH		SYSTEM	SUB-SYSTEM	DESIGNER	DATE
6061-T6 Al		μinch		ADVANCED LIGO	AOS	J. TERRAZAS	16 MAR 2011
NEXT ASSY		D1100460		CHECKER	APPROVAL	J. TERRAZAS	07 JUN 2011
				SIZE	DWG. NO.	REV.	
				B	D1100463	v1	
				SCALE: 1:4	PROJECTION:	SHEET 1 OF 1	