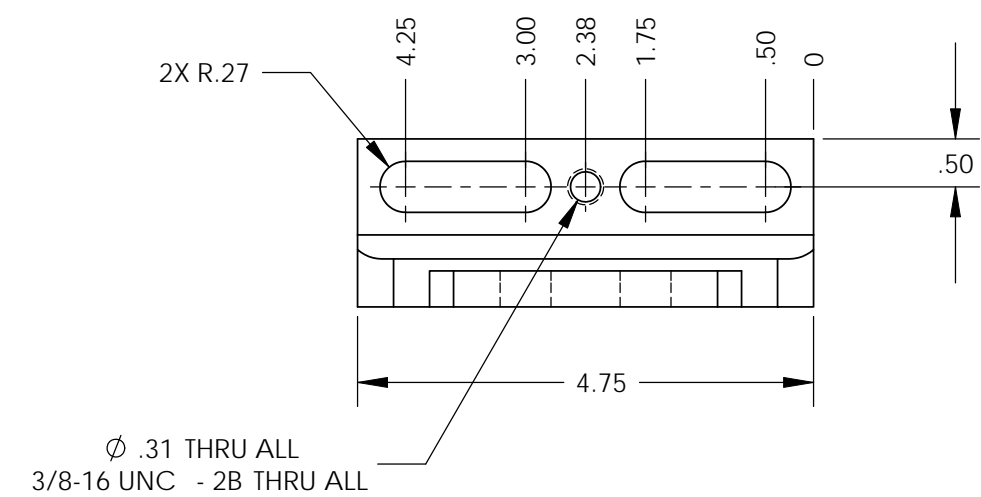
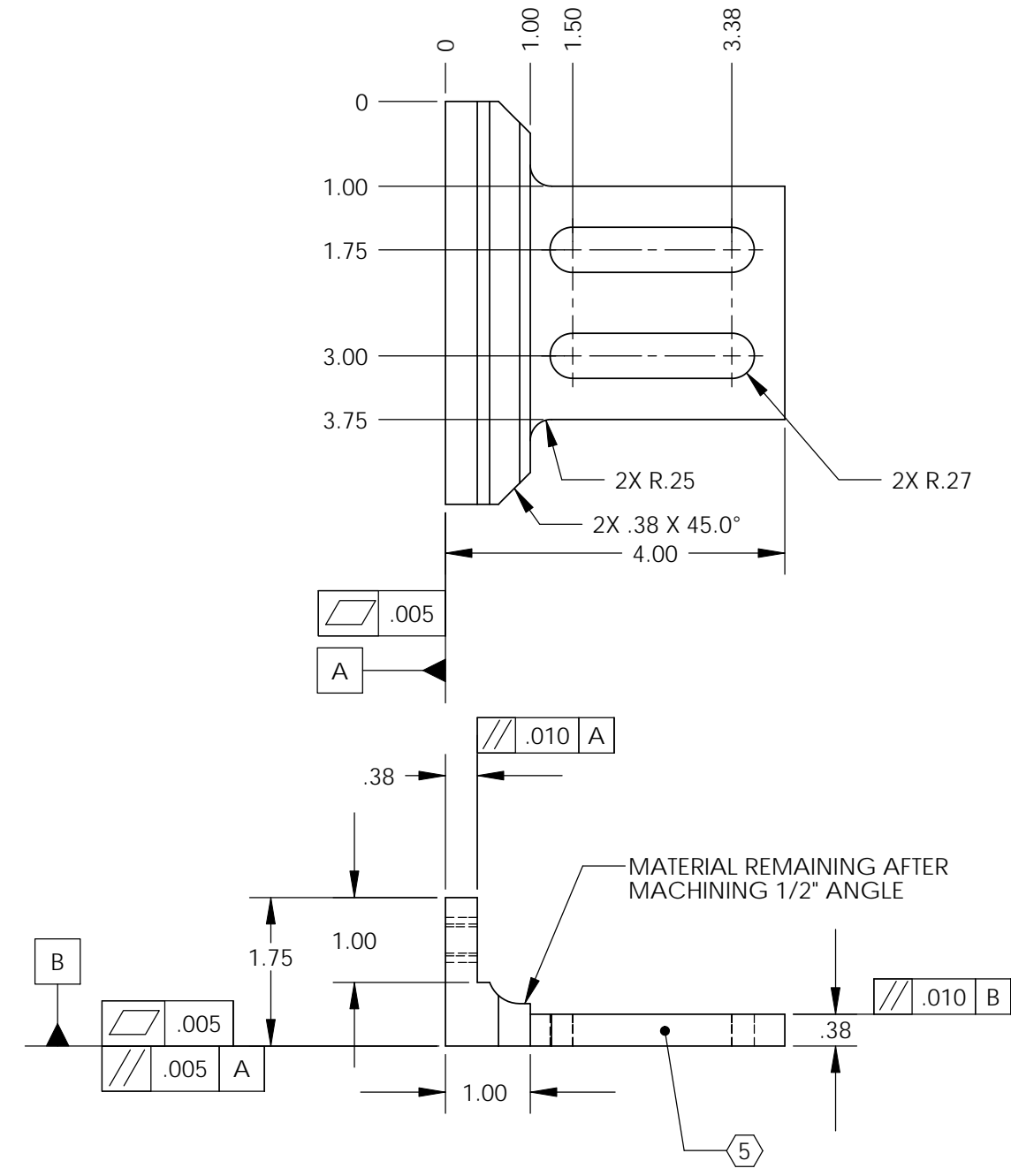


REV.	DATE	DCN #	DRAWING TREE #
v1	15 Mar. 2011	E1100253	E1100016



NOTES CONTINUED:

- ALL MACHINING FLUIDS MUST BE FULLY SYNTHETIC, FULLY WATER SOLUBLE AND FREE OF SULFUR, SILICONE AND CHLORINE.
- SCRIBE, ENGRAVE, OR MECHANICALLY STAMP (NO INKS OR DYES) DRAWING PART NUMBER, REVISION (AND VARIANT OR "TYPE" IF APPLICABLE) ON NOTED SURFACE OF PART FOLLOWED ON THE NEXT LINE WITH A THREE DIGIT SERIAL NUMBER. SERIAL NUMBERS START AT 001 FOR THE FIRST ARTICLE AND PROCEED CONSECUTIVELY. USE MINIMUM 0.12 HIGH CHARACTERS, UNLESS THE SIZE OF THE PART DICTATES SMALLER CHARACTERS. A VIBRATORY TOOL MAY BE USED. EXAMPLE DXXXXXXXX-VY, TYPE-XX, S/N XXX.
- APPROXIMATE WEIGHT = 1.7956 LB.
- ALL PARTS SHALL BE MANUFACTURED IN ACCORDANCE WITH LIGO SPECIFICATION E0900364.
- PAINT: ALL VISIBLE SURFACES (exclude fastening hardware) EXCEPT AREAS IDENTIFIED BY ~~MA~~ MEDIUM BLUE SHERWIN WILLIAMS (POLANE (R) T-PLUS POLYURETHANE ENAMEL) #SW-F63TX-L-2822-5864 PRIME WITH SHERWIN WILLIAMS INDUSTRIAL WASH PRIMER P60G2
- "OXI SOLV RUST INHIBITOR" TO BE APPLIED PER MFG. INSTRUCTIONS TO ALL UNPAINTED SURFACES. BOTH TAPPED AND THRU HOLES WILL BE PLUGGED DURING APPLICATION.

DIMENSIONS ARE IN INCHES		TOLERANCES: .XX ± .010 .XXX ± .005		ANGULAR ± .5°		NOTES AND TOLERANCES: (UNLESS OTHERWISE SPECIFIED)		PART NAME	
1. INTERPRET DRAWING PER ASME Y14.5-1994.		2. REMOVE ALL SHARP EDGES, .03 x 45°.		3. DO NOT SCALE FROM DRAWING.		CALIFORNIA INSTITUTE OF TECHNOLOGY MASSACHUSETTS INSTITUTE OF TECHNOLOGY		UNIFIED HYDRAULIC ACTUATOR BRACKET, aLIGO HEPI	
MATERIAL AISI 1018 STEEL		FINISH 63 μinch		NEXT ASSY D1100144, D1100146 D1100241, D1100242		DESIGNER M.HILLARD 15 Mar. 2011		SIZE B	
D1100473		D1100473		D1100473		D1100473		D1100473	
SCALE: 1:2		PROJECTION:		SHEET 1 OF 1		DESIGNER M.HILLARD 15 Mar. 2011		DWG. NO. D1100473	
APPROVAL K.MASON 15 Mar. 2011		CHECKER K.MASON 15 Mar. 2011		APPROVAL K.MASON 15 Mar. 2011		DESIGNER M.HILLARD 15 Mar. 2011		REV. v1	

D1100473, PART PDM REV: X-001, DRAWING PDM REV: X-004