

8

7

6

5

4

3

2

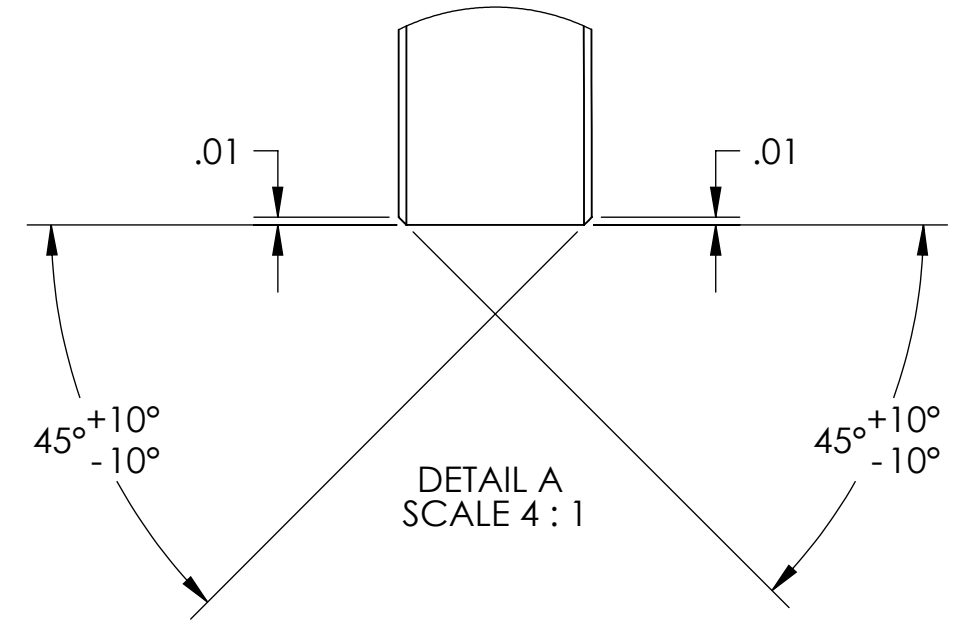
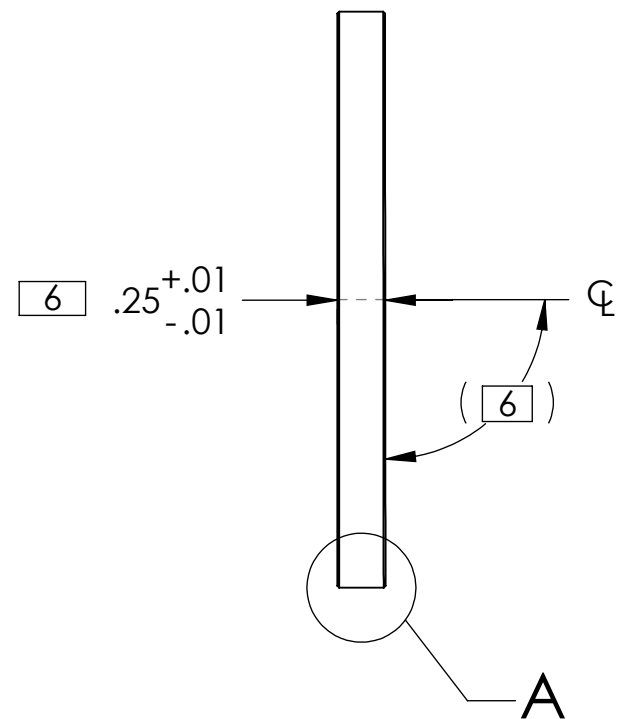
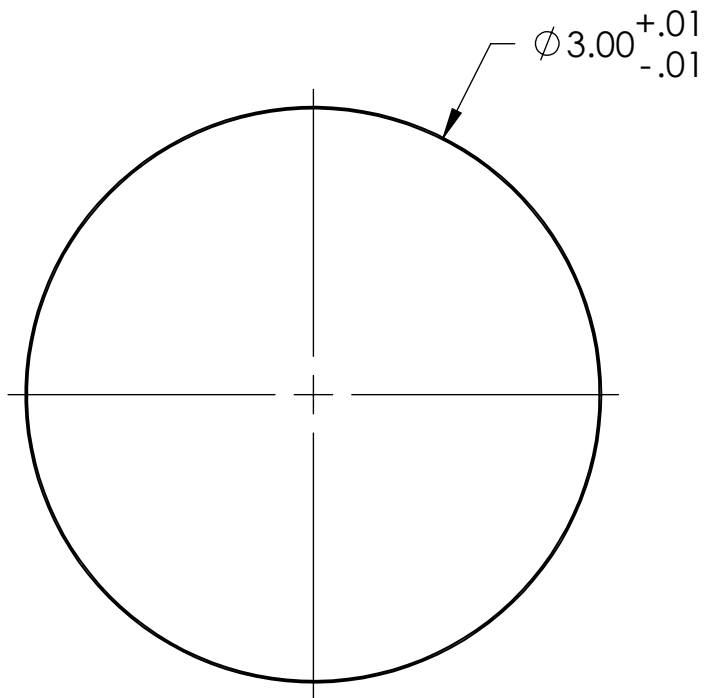
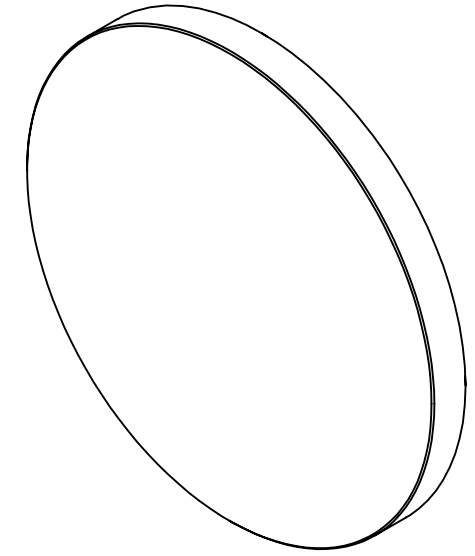
1

NOTES CONTINUED:

5 SCRIBE, ENGRAVE, LASER MARK OR MECHANICALLY STAMP (NO DYES OR INKS) A UNIQUE THREE DIGIT SERIAL NUMBER & REVISION NUMBER ON EACH PART. SERIAL NUMBERS START AT 001 FOR THE FIRST ARTICLE AND PROCEED CONSECUTIVELY. BAG AND TAG PARTS WITH THEIR DRAWING PART NUMBER, REVISION, VARIANT OR "TYPE" (IF APPLICABLE), AND QUANTITY. IF PARTS ARE TOO SMALL TO SCRIBE, BAGGING AND TAGGING ALONE IS SUFFICIENT.  
 EXAMPLE (PART): 001-v1  
 EXAMPLE (TAG): DXXXXXX-VY, TYPE-XX, QTY: TBD

6 MATERIAL: OPTICAL GRADE "A" FUSED SILICA (HEREAUS INFRASIL 301-A, HERASIL 1-A, SUPRASIL 311-A, or SUPRASIL 312-A)  
 DIAMETER: 3.000", (+/-0.010)  
 CLEAR APERTURE: 2.75"  
 THICKNESS: 0.25" +/-0.010  
 WEDGE: 3min. +/- 2min  
 WAVEFRONT DISTORTION ACROSS ANY 20 mm DIAMETER WITHIN THE CLEAR APERTURE: < 1/10 LAMBDA @ 633 nm WAVELENGTH  
 EDGE CHAMFER: 0.010" @ 45 DEG +/-10DEG  
 SURFACE QUALITY: 10-5 LASER QUALITY

REV.	DATE	DCN #	DRAWING TREE #
v2	26 JUL 2011	E1100655-v1	E1100656-v1
-	-	-	-
-	-	-	-



D1100539\_dLIGO TCS\_.25" THICK OPTICAL WINDOW, PART PDM REV: X-006, DRAWING PDM REV: X-005

NOTES AND TOLERANCES: (UNLESS OTHERWISE SPECIFIED)	
DIMENSIONS ARE IN INCHES	
TOLERANCES: .XX ± .01 .XXX ± .005 ANGULAR ± °	
MATERIAL	SEE NOTE 6
FINISH	6

CALIFORNIA INSTITUTE OF TECHNOLOGY MASSACHUSETTS INSTITUTE OF TECHNOLOGY		PART NAME	
SYSTEM <b>ADVANCED LIGO</b>		SUB-SYSTEM <b>AOS</b>	
NEXT ASSY		D1100494	

PART NAME		aLIGO TCS .25 IN THICK OPTICAL WINDOW	
DESIGNER	A. LANGLEY	24 MAR 2011	SIZE DWG. NO.
DRAFTER	A. LANGLEY	24 MAR 2011	<b>B</b>
CHECKER	M. JACOBSON	26 JUL 2011	<b>D1100539</b>
APPROVAL	P. WILLEMS	30 MAR 2011	REV. <b>v2</b>
SCALE: 1:1		PROJECTION:	
SHEET 1 OF 1			

8

7

6

5

4

3

2

1