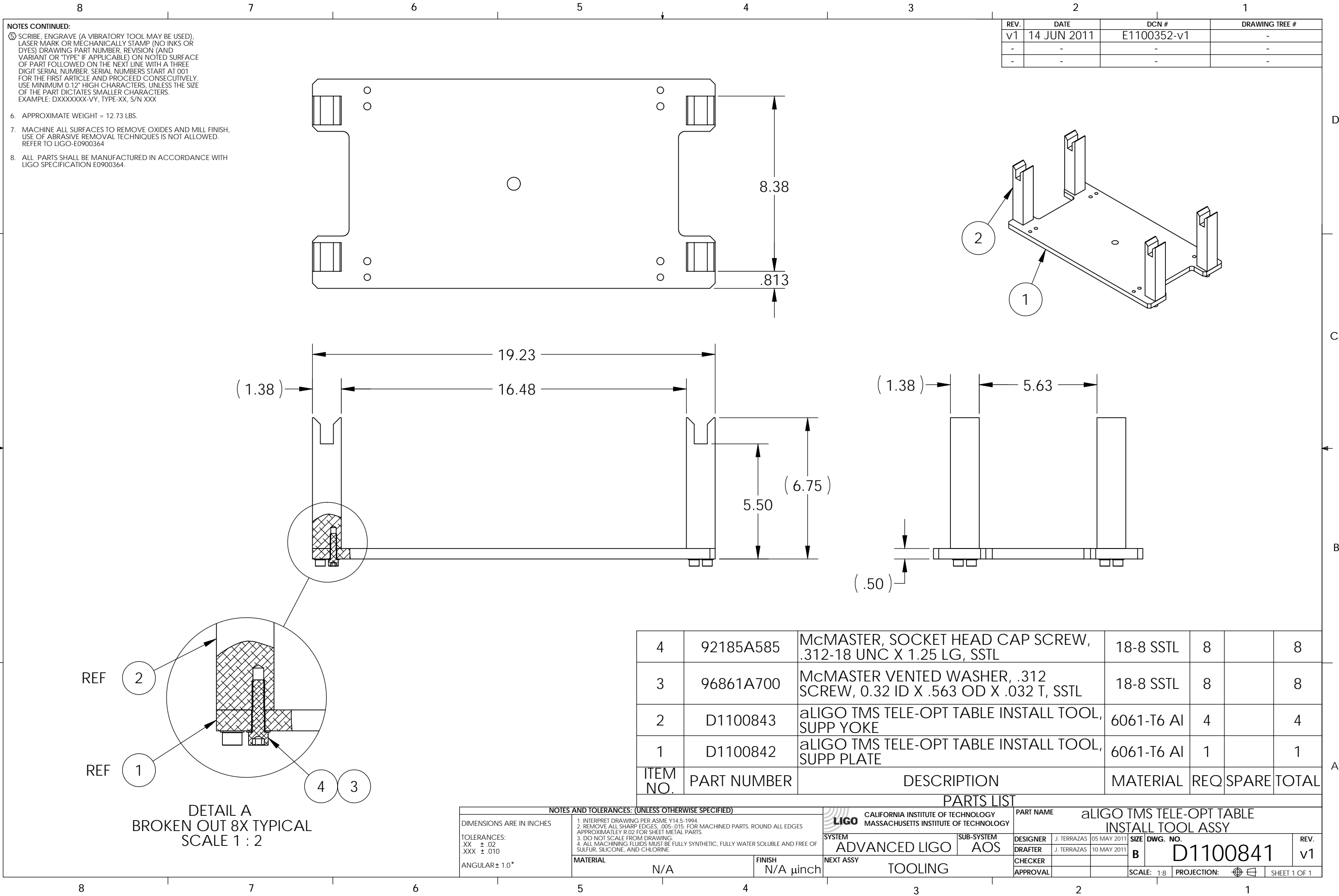


D1100841\_aLIGO TMS TELE-OPT TABLE INSTALL TOOL ASSY, PART PDM REV: X-016, DRAWING PDM REV: X-006



**NOTES CONTINUED:**

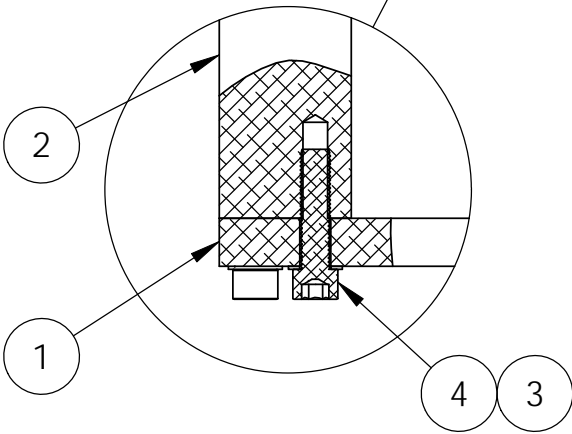
5. SCRIBE, ENGRAVE (A VIBRATORY TOOL MAY BE USED), LASER MARK OR MECHANICALLY STAMP (NO INKS OR DYES) DRAWING PART NUMBER, REVISION (AND VARIANT OR "TYPE" IF APPLICABLE) ON NOTED SURFACE OF PART FOLLOWED ON THE NEXT LINE WITH A THREE DIGIT SERIAL NUMBER. SERIAL NUMBERS START AT 001 FOR THE FIRST ARTICLE AND PROCEED CONSECUTIVELY. USE MINIMUM 0.12" HIGH CHARACTERS, UNLESS THE SIZE OF THE PART DICTATES SMALLER CHARACTERS. EXAMPLE: DXXXXXX-VY, TYPE-XX, S/N XXX

6. APPROXIMATE WEIGHT = 12.73 LBS.

7. MACHINE ALL SURFACES TO REMOVE OXIDES AND MILL FINISH. USE OF ABRASIVE REMOVAL TECHNIQUES IS NOT ALLOWED. REFER TO LIGO-E0900364

8. ALL PARTS SHALL BE MANUFACTURED IN ACCORDANCE WITH LIGO SPECIFICATION E0900364.

REV.	DATE	DCN #	DRAWING TREE #
v1	14 JUN 2011	E1100352-v1	-
-	-	-	-
-	-	-	-



**DETAIL A**  
BROKEN OUT 8X TYPICAL  
SCALE 1 : 2

ITEM NO.	PART NUMBER	DESCRIPTION	MATERIAL	REQ	SPARE	TOTAL
4	92185A585	McMASTER, SOCKET HEAD CAP SCREW, .312-18 UNC X 1.25 LG, SSTL	18-8 SSTL	8		8
3	96861A700	McMASTER VENTED WASHER, .312 SCREW, 0.32 ID X .563 OD X .032 T, SSTL	18-8 SSTL	8		8
2	D1100843	aLIGO TMS TELE-OPT TABLE INSTALL TOOL, SUPP YOKE	6061-T6 Al	4		4
1	D1100842	aLIGO TMS TELE-OPT TABLE INSTALL TOOL, SUPP PLATE	6061-T6 Al	1		1

**PARTS LIST**

NOTES AND TOLERANCES: (UNLESS OTHERWISE SPECIFIED)				LIGO CALIFORNIA INSTITUTE OF TECHNOLOGY MASSACHUSETTS INSTITUTE OF TECHNOLOGY		PART NAME aLIGO TMS TELE-OPT TABLE INSTALL TOOL ASSY							
DIMENSIONS ARE IN INCHES				1. INTERPRET DRAWING PER ASME Y14.5-1994		SYSTEM ADVANCED LIGO		SUB-SYSTEM AOS		DESIGNER J. TERRAZAS	DATE 05 MAY 2011	SIZE DWG. NO. B	REV. v1
TOLERANCES: .XX ± .02 .XXX ± .010				2. REMOVE ALL SHARP EDGES, .005-.015, FOR MACHINED PARTS. ROUND ALL EDGES APPROXIMATELY R.02 FOR SHEET METAL PARTS.		MATERIAL N/A		FINISH N/A μinch		DRAFTER J. TERRAZAS		DATE 10 MAY 2011	
ANGULAR ± 1.0°				3. DO NOT SCALE FROM DRAWINGS.		NEXT ASSY TOOLING		CHECKER		APPROVAL		SCALE: 1:8 PROJECTION:	
				4. ALL MACHINING FLUIDS MUST BE FULLY SYNTHETIC, FULLY WATER SOLUBLE AND FREE OF SULFUR, SILICONE, AND CHLORINE.						SHEET 1 OF 1			