

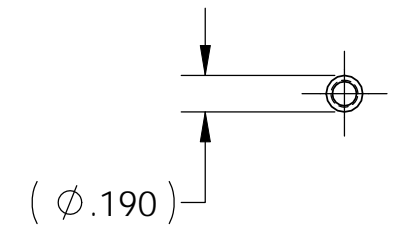
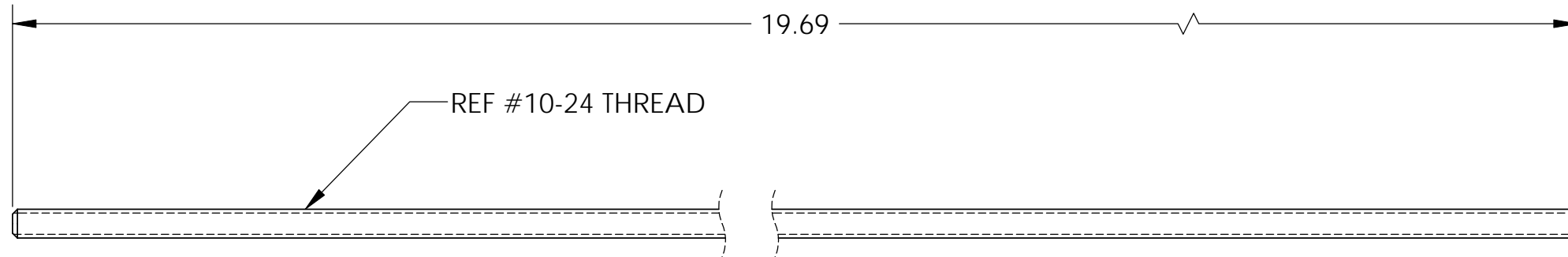
D1101557_aLIGO TMS TELE SAFETY SUPPORT TURNBUCKLE, SIDE, SHORT, THREADED ROD, PART PDM REV: X-005, DRAWING PDM REV: X-001

8 7 6 5 4 3 2 1

NOTES CONTINUED:

- 5. BAG AND TAG PARTS INDIVIDUALLY WITH THEIR DRAWING NUMBER, REVISION, VARIANT OR "TYPE" (IF APPLICABLE), AND QUANTITY.
EXAMPLE (TAG): DXXXXXX-VY, TYPE-XX, QTY: 1
- 6. APPROXIMATE WEIGHT = 0.158 LBS.
- 8. ALL PARTS SHALL BE MANUFACTURED IN ACCORDANCE WITH LIGO SPECIFICATION E0900364.
- 9. SURFACE FINISH TO BE AS-PROCESSED FROM MILL/SUPPLIER, FREE FROM SCRATCHES OR GOUGES.
- 10. MAKE FROM McMASTER CARR PART NO. 98804A011 OR EQUIV.

REV.	DATE	DCN #	DRAWING TREE #
v1	04 AUG 2011	E110351	-
-	-	-	-
-	-	-	-



D

D

C

C

B

B

A

A

NOTES AND TOLERANCES: (UNLESS OTHERWISE SPECIFIED)				LIGO CALIFORNIA INSTITUTE OF TECHNOLOGY MASSACHUSETTS INSTITUTE OF TECHNOLOGY		PART NAME aLIGO TMS TELE SAFETY SUPPORT TURNBUCKLE, SIDE, SHORT, THREADED ROD				
DIMENSIONS ARE IN INCHES		1. INTERPRET DRAWING PER ASME Y14.5-1994. 2. REMOVE ALL SHARP EDGES, .005-.015, FOR MACHINED PARTS. ROUND ALL EDGES APPROXIMATELY R.02 FOR SHEET METAL PARTS. 3. DO NOT SCALE FROM DRAWING. 4. ALL MACHINING FLUIDS MUST BE FULLY SYNTHETIC, FULLY WATER SOLUBLE AND FREE OF SULFUR, SILICONE, AND CHLORINE.		SYSTEM	SUB-SYSTEM	DESIGNER	DATE	SIZE	DWG. NO.	REV.
TOLERANCES: .XX ± .02 .XXX ± .010		MATERIAL	FINISH	ADVANCED LIGO	AOS	J. TERRAZAS	04 AUG 2011	B	D1101557	
ANGULAR ± 1.0°		18-8 SSSL	μinch	NEXT ASSY	D1101506	J. TERRAZAS	04 AUG 2011		v1	
						SCALE: 1:4		PROJECTION:	SHEET 1 OF 1	

8 7 6 5 4 3 2 1