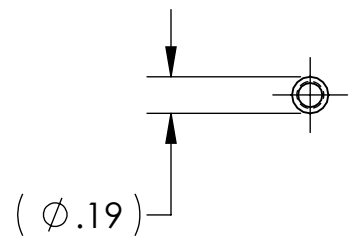
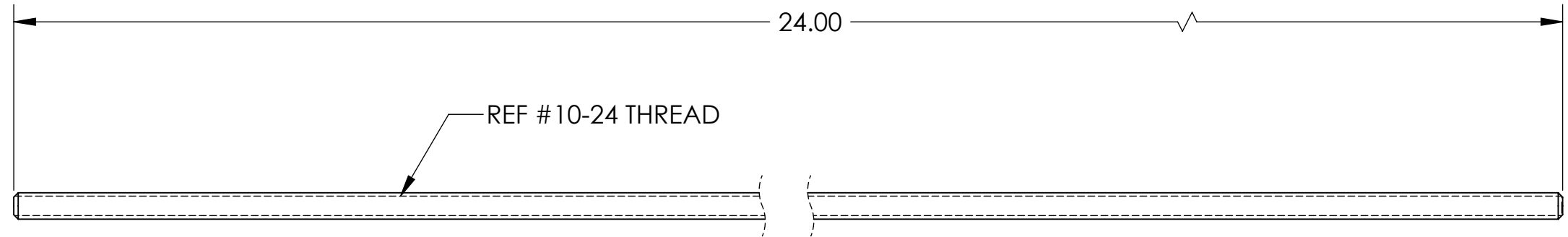


8 7 6 5 4 3 2 1

NOTES CONTINUED:

- 5. BAG AND TAG PARTS INDIVIDUALLY WITH THEIR DRAWING NUMBER, REVISION, VARIANT OR "TYPE" (IF APPLICABLE), AND QUANTITY. EXAMPLE (TAG): DXXXXXX-VY, TYPE-XX, QTY: 1
- 6. APPROXIMATE WEIGHT = 0.193 LBS.
- 8. ~~ALL PARTS SHALL BE MANUFACTURED IN ACCORDANCE WITH LIGO SPECIFICATION E0900364.~~
- 9. SURFACE FINISH TO BE AS-PROCESSED FROM MILL/SUPPLIER, FREE FROM SCRATCHES OR GOUGES.
- 10. MAKE FROM McMASTER CARR PART NO. 98804A011 OR EQUIV.

REV.	DATE	DCN #	DRAWING TREE #
v1	04 AUG 2011	E1100351	-
v2	10-2-12	to follow	-
-	-	-	-



D1101558_dLIGO TMS TELE SAFETY SUPPORT TURNBUCKLE, SIDE, LONG, THREADED ROD, PART PDM REV: X-013, DRAWING PDM REV: X-004

A B C D

A B C D

NOTES AND TOLERANCES: (UNLESS OTHERWISE SPECIFIED)				LIGO CALIFORNIA INSTITUTE OF TECHNOLOGY MASSACHUSETTS INSTITUTE OF TECHNOLOGY		PART NAME		REV.	
DIMENSIONS ARE IN INCHES				1. INTERPRET DRAWING PER ASME Y14.5-1994.		αLIGO TMS TELE SAFETY SUPPORT		v2	
TOLERANCES:				2. REMOVE ALL SHARP EDGES, .005-.015, FOR MACHINED PARTS. ROUND ALL EDGES APPROXIMATELY R.02 FOR SHEET METAL PARTS.		TURNBUCKLE, SIDE, LONG, THREADED ROD			
.XX ± .02				3. DO NOT SCALE FROM DRAWING.		DESIGNER J. TERRAZAS 04 AUG 2011		SIZE DWG. NO.	
.XXX ± .010				4. ALL MACHINING FLUIDS MUST BE FULLY SYNTHETIC, FULLY WATER SOLUBLE AND FREE OF SULFUR, SILICONE, AND CHLORINE.		DRAFTER J. TERRAZAS 04 AUG 2011		B D1101558	
ANGULAR ± 1.0°				MATERIAL 18-8 SSSL		SUB-SYSTEM AOS		CHECKER	
				FINISH μinch		NEXT ASSY D1101506		APPROVAL	
						SCALE: 1:8		PROJECTION:	
						SHEET 1 OF 1			

8 7 6 5 4 3 2 1