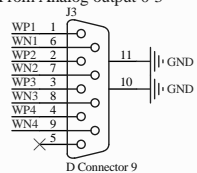
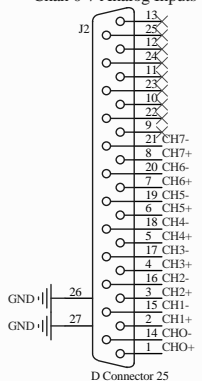


From Analog output 0-3



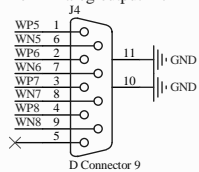
D Connector 9

Chan 0-7 Analog Inputs



D Connector 25

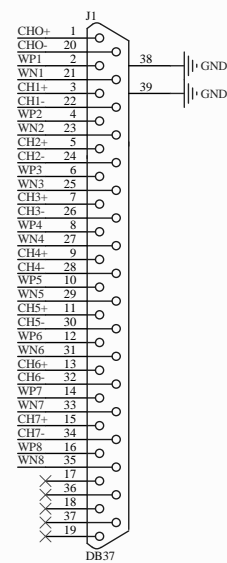
From Analog output 4-7



D Connector 9

This connector contains all of the analog inputs and outputs.
It connects all these inputs/outputs to the front board inside the chassis.

To Front Board J1



DB37

Title		LIGO Project		LIGO	
ISC Whitening Filter Controller Back Board		California Institute of Technology		Massachusetts Institute of Technology	
Size: B	DCC Number: D1101745	SCH / PCB Revision: v1	Engineer: S. Abbott	Date: 9/17/2011	
File: C:\Documents and Settings\sabbott\My Documents\My Designs\ISC_Gain_Filter_Board\Back_Board_ISC_Gain_Filter_SchDoc.rvt					