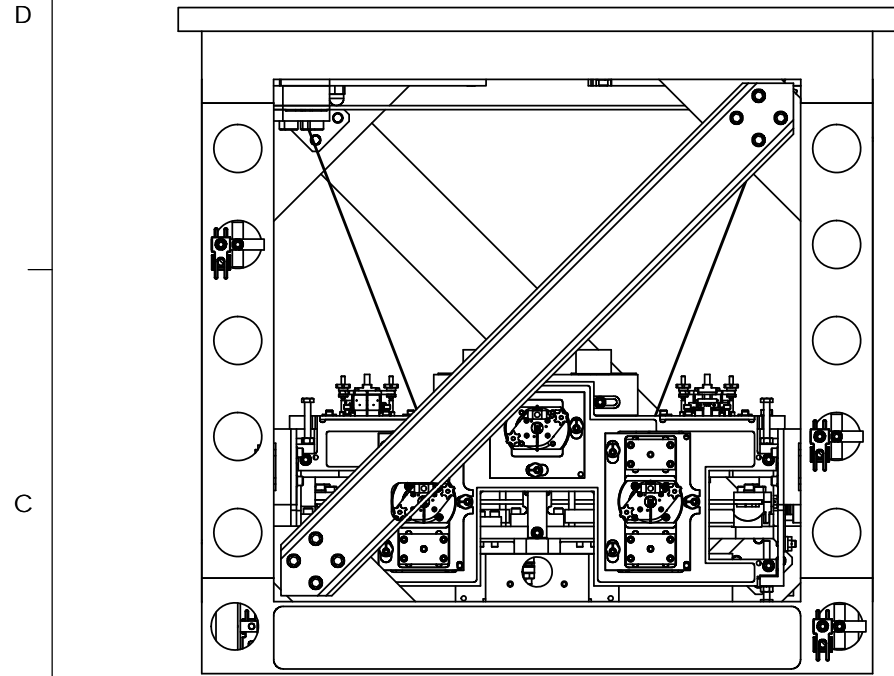


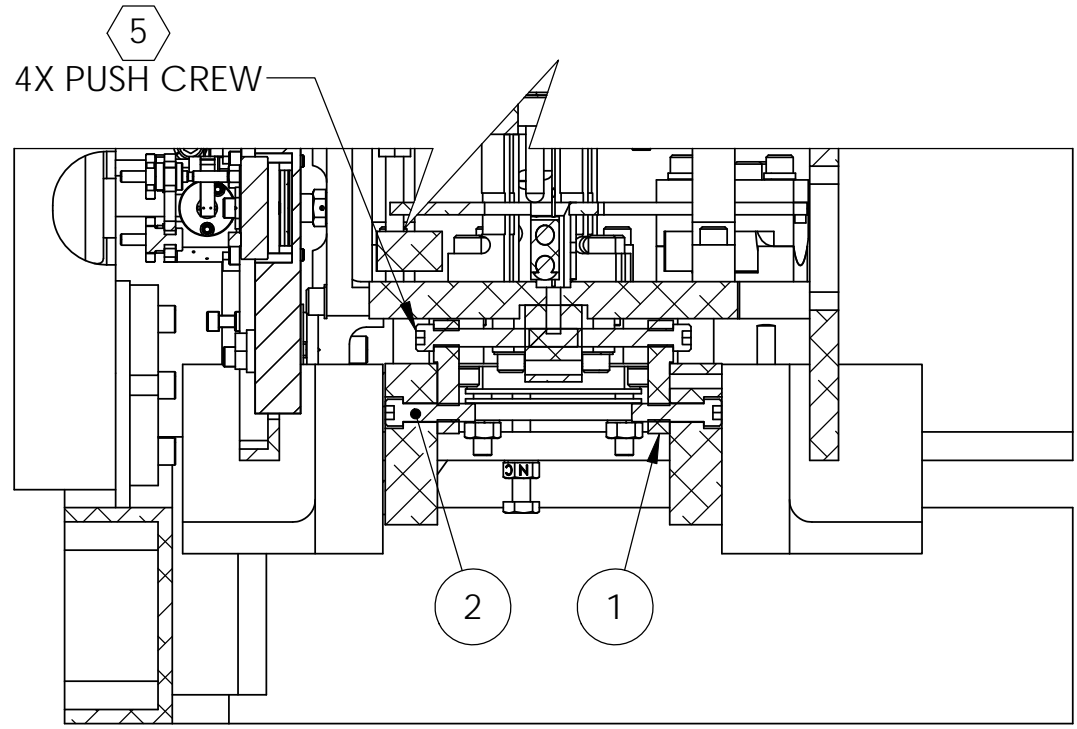
NOTES CONTINUED:

5 USE ANY APPROPRIATE 1/4-20 SSTL SCREW,
(MUST HAVE A SPHERICAL POINT END)

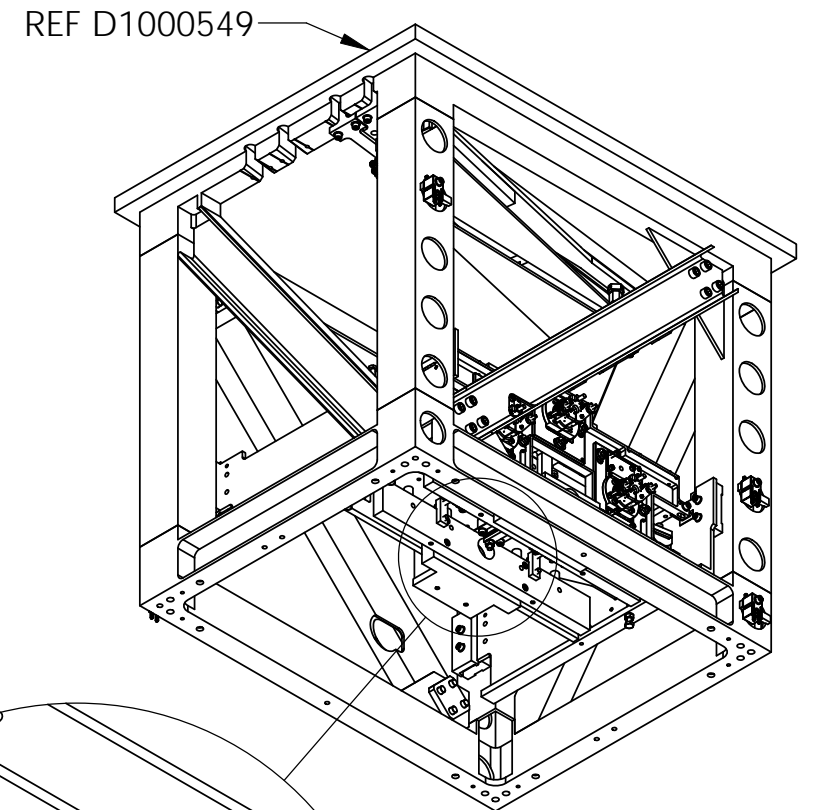
REV.	DATE	DCN #	DRAWING TREE #
v1	01 SPT 2011	E1100351	-
-	-	-	-
-	-	-	-



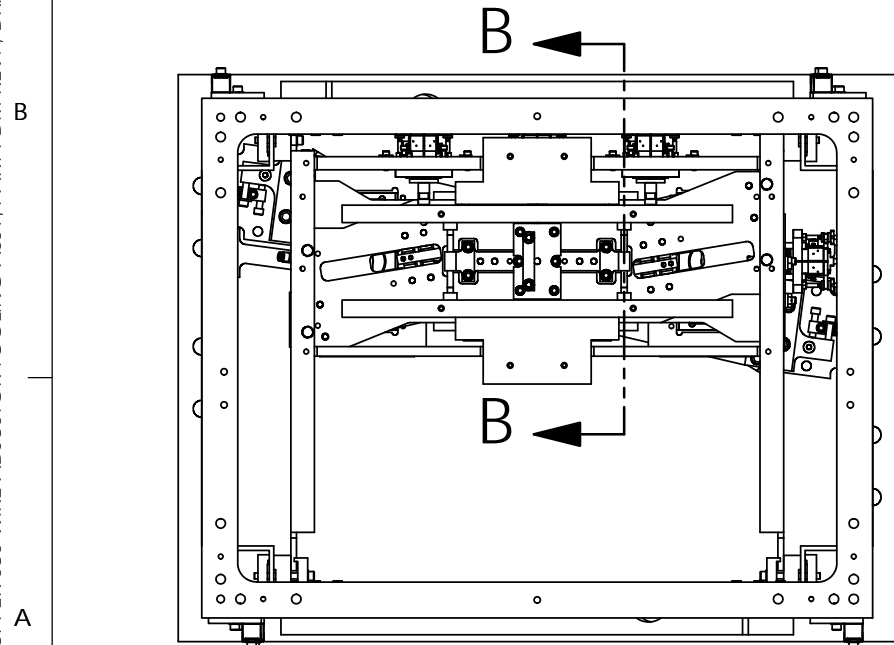
SIDE VIEW



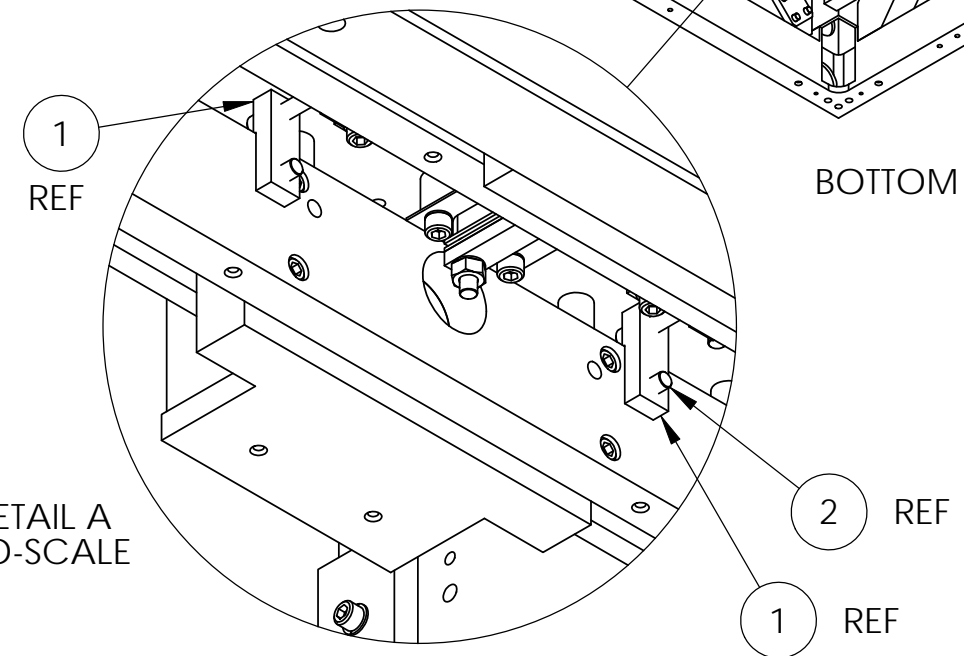
SECTION B-B ROTATED 90°
BROKEN OUT
NO-SCALE



BOTTOM ISO VIEW



BOTTOM VIEW



DETAIL A
NO-SCALE

ITEM NO.	PART NUMBER	DESCRIPTION	MATERIAL	REQ	SPARE	TOTAL
2	-	SCREW, SOCKET HEAD CAP, 1/4-20 UNC-2A X 1 LONG	300 SSTL	4		4
1	D1101757	aLIGO TMS UPPER SUS WIRE ADJUSTER	6061-T6 Al	4	0	4

PARTS LIST

NOTES AND TOLERANCES: (UNLESS OTHERWISE SPECIFIED)				LIGO		PART NAME	
DIMENSIONS ARE IN INCHES TOLERANCES: .XX ± .02 .XXX ± .010 ANGULAR ± 1.0°				CALIFORNIA INSTITUTE OF TECHNOLOGY MASSACHUSETTS INSTITUTE OF TECHNOLOGY		aLIGO TMS UPPER SUS WIRE ADJUSTER TOOLING ASSY	
1. INTERPRET DRAWING PER ASME Y14.5-1994. 2. REMOVE ALL SHARP EDGES, .005-.015, FOR MACHINED PARTS. ROUND ALL EDGES APPROXIMATELY R.02 FOR SHEET METAL PARTS. 3. DO NOT SCALE FROM DRAWINGS. 4. ALL MACHINING FLUIDS MUST BE FULLY SYNTHETIC, FULLY WATER SOLUBLE AND FREE OF SULFUR, SILICONE, AND CHLORINE.				SYSTEM ADVANCED LIGO		SUB-SYSTEM AOS	
MATERIAL				NEXT ASSY		DESIGNER	
N/A				D0901880		C. CONLEY 31 AUG 2011	
FINISH				DRAWN		DRAFTER	
N/A μinch						J. TERRAZAS 01 SEPT 2011	
				CHECKER		K. MAILAND	
				APPROVAL			
				SCALE: 1:12		PROJECTION:	
						SHEET 1 OF 1	

D1101759_aLIGO TMS UPPER SUS WIRE ADJUSTER TOOLING ASSY, PART PDM REV: , DRAWING PDM REV: