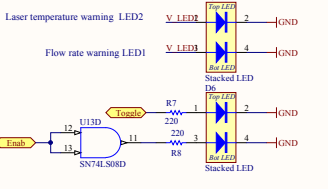


In v6, R115 was changed from 6.65K to 4.87K to match the flowmeter signal better.

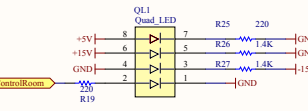
In v6, R24 was changed from 4.02K to 1K to better match the ADC input level of +/- 10V.

In v6, R45 was removed to change the gain of U43 from 2 to 1.

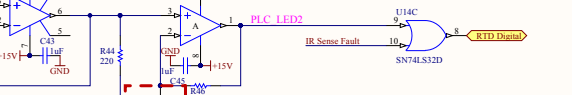
Warning indicator on Front Panel



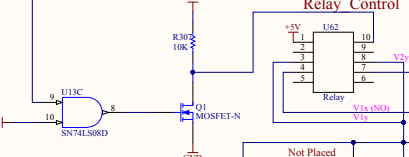
DC power indicator on Front Panel



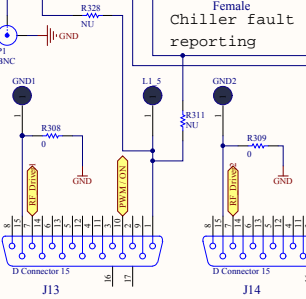
"Or" Temp Fault and IR Sense Fault.



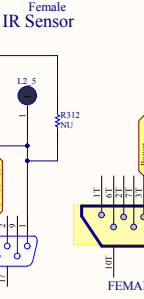
Relay Control



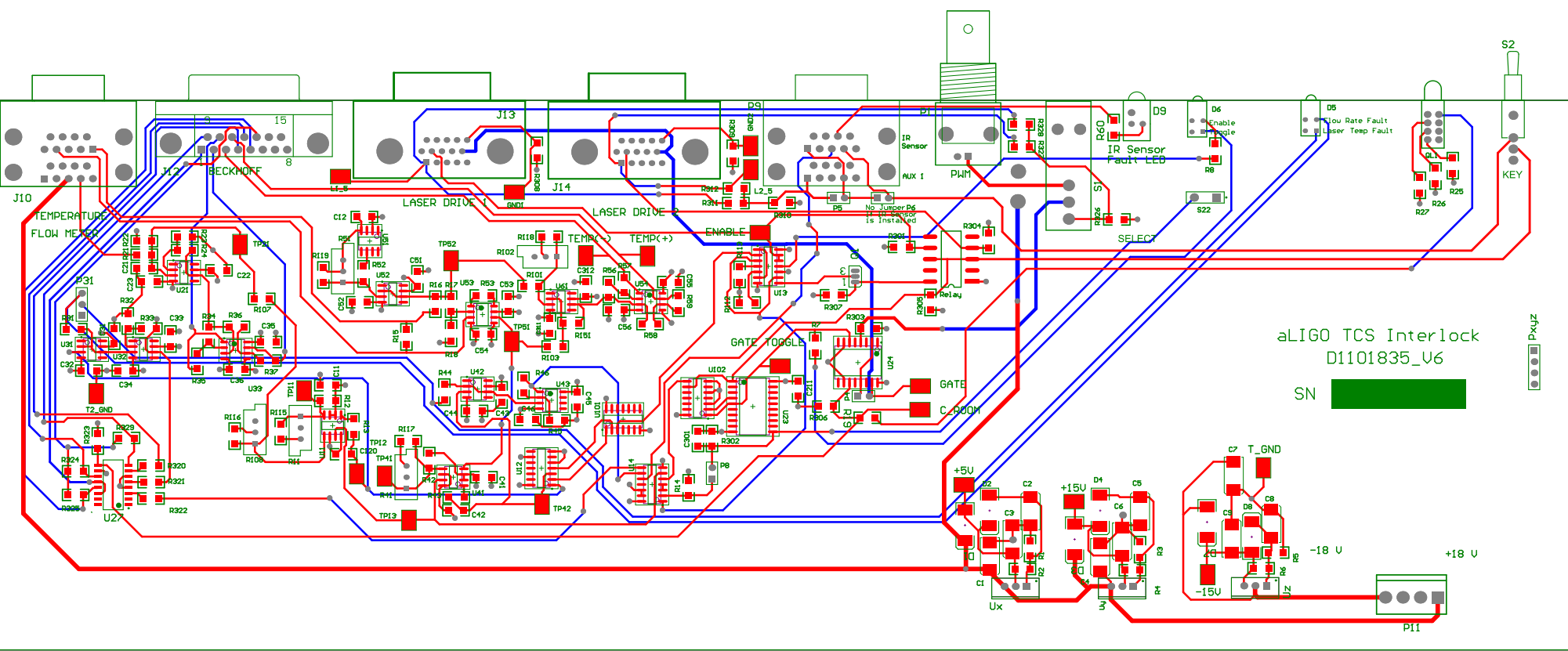
Female Chiller fault reporting



Female IR Sensor



Title		aLIGO TCS Interlock Circuit	
Size:	C	DCC Number:	D1101835
Drawn by:	Shao & Steve	Date:	1/28/2014
File:	C:\ControlRoom\ASICS\TCS_ShiftContr_COOL_Laser\9-17-2012\10-17-AM\TCS_20090901_Sheet 3-1864.dwg	Revision:	v6
		Ligo Project California Institute of Technology Massachusetts Institute of Technology	



aLIGO TCS Interlock
D1101835_V6
SN [REDACTED]

PK4Z

