

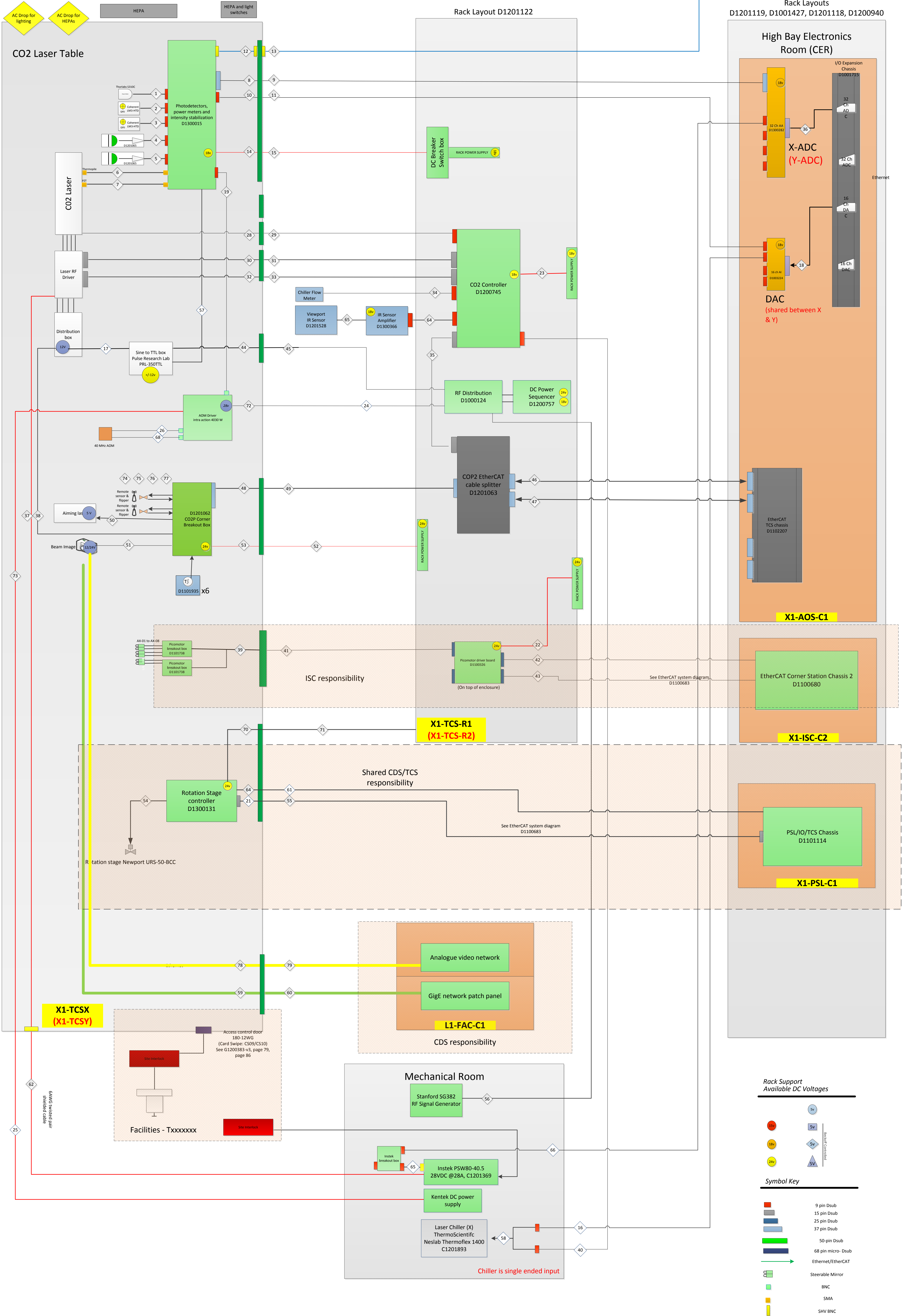
# E1100892-v25 (page 1 of 3)

Corner Station (H1, L1) CO2 Laser projector (X & Y).

Cables for Laser are listed in BOM E1400342

8-Aug-2014

This page shows the electronics layout for one TCS CO2 Laser Projector table. There are 2 such tables at each site, one for X-arm and one for Y-arm. These are identical, each having it's own laser table and field rack. This is denoted here by use of the X-arm names in black and Y-arm names in red. The X and Y arms share one DAC (noted below as shared). The X and Y arms have separate ADCs (shown here in black for X arm and red for Y arm).



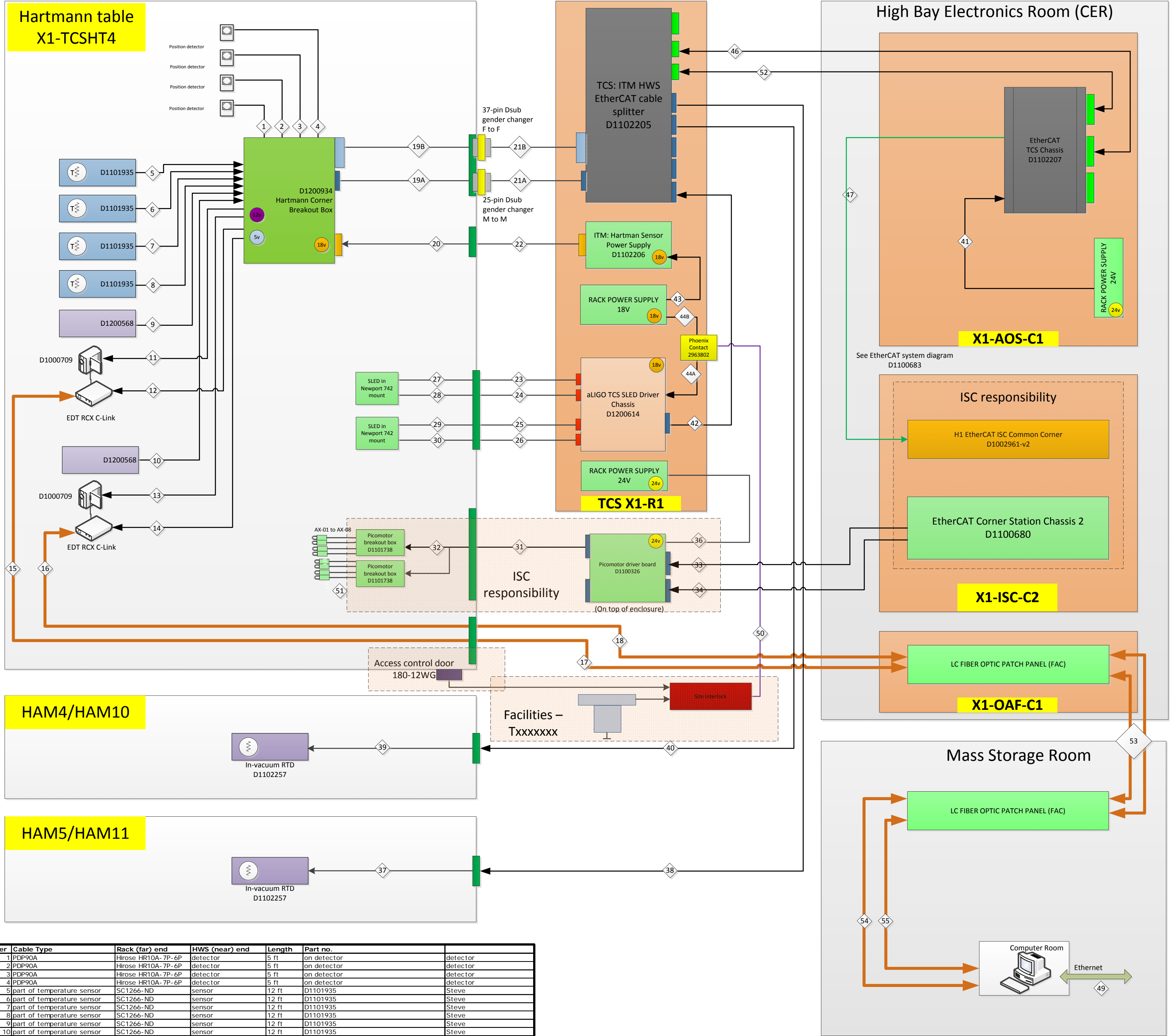
# E1100892-v25 (page 2 of 3)

8-Aug-2014

## Corner Station (H1, L1) – HWS X & Y

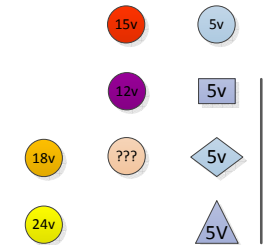
(HWS-X and HWS-Y are housed on the same table)

(X1 = H1, L1)

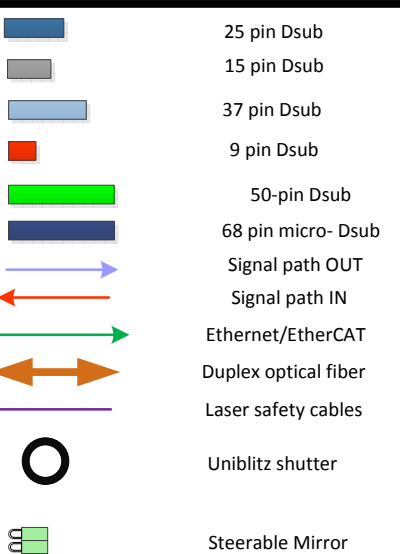


Number	Cable Type	Rack (far) end	HWS (near) end	Length	Part no.	
1	PDP90A	Hirose HR10A-7P-6P	detector	5 ft	on detector	detector
2	PDP90A	Hirose HR10A-7P-6P	detector	5 ft	on detector	detector
3	PDP90A	Hirose HR10A-7P-6P	detector	5 ft	on detector	detector
4	PDP90A	Hirose HR10A-7P-6P	detector	5 ft	on detector	detector
5	part of temperature sensor	SC1266-ND	sensor	12 ft	D1101935	Steve
6	part of temperature sensor	SC1266-ND	sensor	12 ft	D1101935	Steve
7	part of temperature sensor	SC1266-ND	sensor	12 ft	D1101935	Steve
8	part of temperature sensor	SC1266-ND	sensor	12 ft	D1101935	Steve
9	part of temperature sensor	SC1266-ND	sensor	12 ft	D1101935	Steve
10	part of temperature sensor	SC1266-ND	sensor	12 ft	D1101935	Steve
11	9-wire	9-pin D Sub -M	6-pin Hirose	6 ft	D1200566	Steve
12	9-wire	9-pin D Sub -M	760K Switchcraft M	6 ft	D1200567	Steve
13	9-wire	9-pin D Sub -M	6-pin Hirose	6 ft	D1200566	Steve
14	9-wire	9-pin D Sub -M	760K Switchcraft M	6 ft	D1200567	Steve
15	Fiber-optic	LC	LC	2.0 m	L-Com FODLC50-CL-02	L-Com
16	Fiber-optic	LC	LC	2.0 m	L-Com FODLC50-CL-02	L-Com
17	Fiber-optic	LC	LC	100ft	L-Com CA LC LC 50DX OFR OR 100F	L-Com
18	Fiber-optic	LC	LC	100ft	L-Com CA LC LC 50DX OFR OR 100F	L-Com
19A	25-wire cable	25-pin D Sub F	25-pin D Sub M	10 ft	L-Com CRMN25MF-10	Steve
19B	37-wire cable	37-pin D Sub M	37-pin D Sub F	10 ft	L-Com CRMN37MF-10	Steve
20	5-wire - 18 gauge	5-pin Conec - M	5-pin Conec - F	10 ft	D1200571	Steve
21A	25-wire cable	25-pin D Sub F	25-pin D Sub M	15 ft	L-Com CRMN25MF-15	Steve
21B	37-wire cable	37-pin D Sub M	37-pin D Sub F	15 ft	L-Com CRMN37MF-15	Steve
22	5-wire - 18 gauge	5-pin Conec - M	5-pin Conec - F	15 ft	D1200571	Steve
23	15-wire	15-pin Dsub - M	15-pin Dsub - F	15 ft	L-Com CRMN15MF-15	Steve
24	9-wire	9-pin Dsub - M	9-pin Dsub - F	15 ft	L-Com CRMN9MF-15	Steve
25	15-wire	15-pin Dsub - M	15-pin Dsub - F	15 ft	L-Com CRMN15MF-15	Steve
26	9-wire	9-pin Dsub - M	9-pin Dsub - F	15 ft	L-Com CRMN9MF-15	Steve
27	15-wire	15-pin Dsub - M	15-pin Dsub - F	10 ft	L-Com CRMN15MF-10	Steve
28	9-wire	9-pin Dsub - M	9-pin Dsub - F	10 ft	L-Com CRMN9MF-10	Steve
29	15-wire	15-pin Dsub - M	15-pin Dsub - F	10 ft	L-Com CRMN15MF-15	Steve
30	9-wire	9-pin Dsub - M	9-pin Dsub - F	10 ft	L-Com CRMN9MF-15	Steve
31	25-wire	25-pin Dsub - M	25-pin Dsub - F	15 ft	L-Com CRMN25MF-15	Steve
32	25-wire	25-pin Dsub - M	2x 9-pin Dsub - F	10 ft	D1300484	Steve
33	25-wire	25-pin Dsub - M	25-pin Dsub - F	122 ft	D1002956	Steve
34	25-wire	25-pin Dsub - M	25-pin Dsub - F	122 ft	D1002956	Steve
35	n/a					
36	3-wire - 10 gauge	3-pin Conec - (MFM)	3-pin Conec - (FMF)	15 ft	D1002209 [Option 2]	Steve
37	in-vacuum temperature sensor cables				D1102257 + SYS connector to flange	Vacuum
38	4-wire	25-pin Dsub - M	25-pin Dsub - F	42 ft	D1002956	Steve
39	in-vacuum temperature sensor cables				D1102257 + SYS connector to flange	Vacuum
40	4-wire	25-pin Dsub - M	25-pin Dsub - F	85 ft	D1002956	Steve
41	3-wire 10-gauge	3-pin Conec - (MFM)	3-pin Conec - (FMF)	5 ft	D1002209 [Option 2]	Steve
42	25-wire	25-pin Dsub - F	25-pin Dsub - M	5 ft	L-Com CRMN25MF-5	Steve
43	3-wire - 10 gauge	3-pin Conec - M	3-pin Conec - F	6 ft	D1002209 [Option 1]	Steve
44A	3-wire - 10 gauge	3-pin Conec - M	3-pin Conec - F	3 ft	D1002209 [Option 1]	Steve
44B	3-wire - 10 gauge	3-pin Conec - M	3-pin Conec - F	3 ft	D1002209 [Option 1]	Steve
45	no longer required					
46	50-pin cable	50-pin D Sub M	50-pin D Sub F	122 ft	E1200842	
47	Ethernet			250 ft		
48	Ethernet			30 ft		
49	Ethernet			30 ft		
50	Safety cable					
51	New Focus 8816-6			7 ft	part of pico-motor	pico-motor
52	50-pin cable	50-pin D Sub F	50-pin D Sub M	122 ft	E1200842	
53	Fiber-optic cables	SITE				
54	Fiber-optic	LC	LC	30 ft	L-Com Custom	L-Com
55	Fiber-optic	LC	LC	30ft	L-Com Custom	L-Com

### Rack Support Available DC Voltages



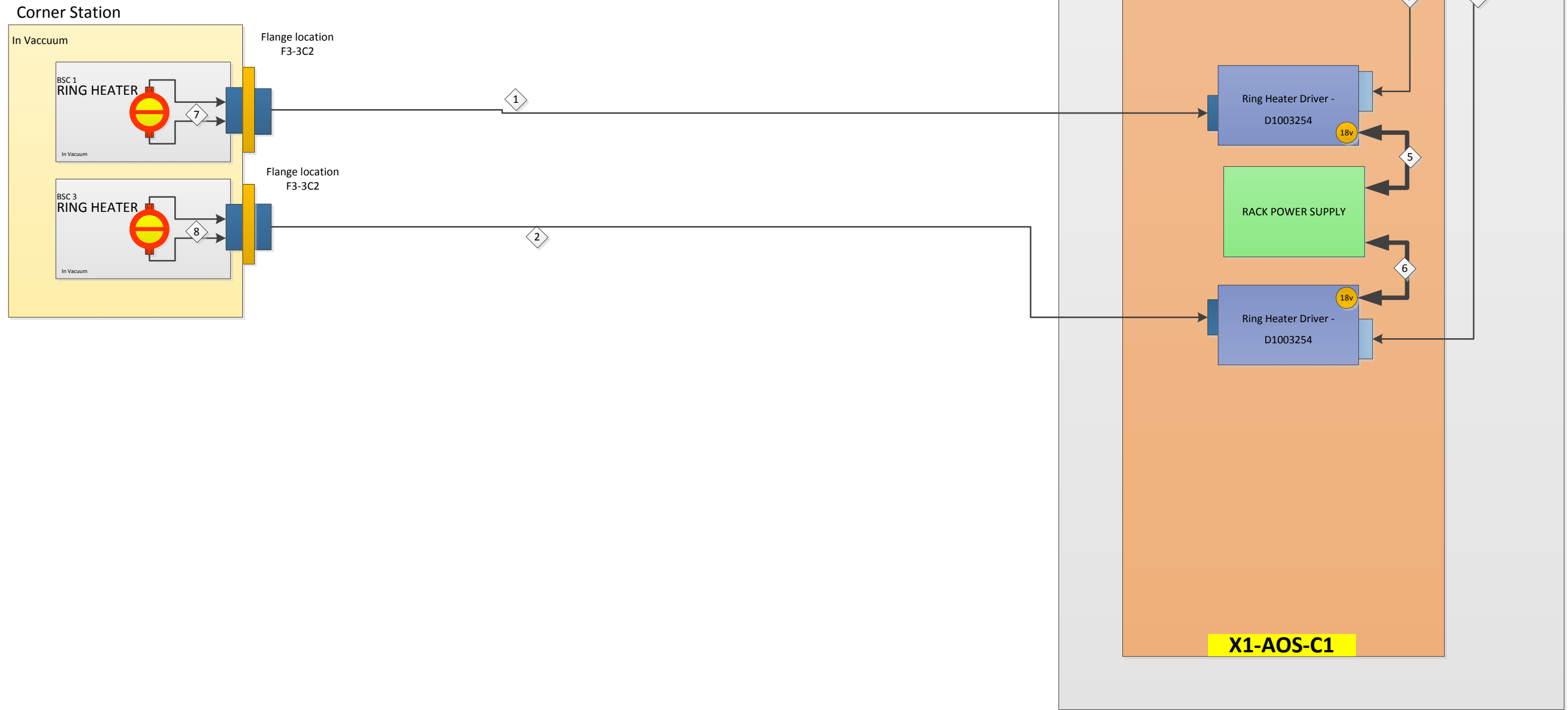
### Symbol Key



## Corner Station (H1, L1)

## Ring Heater X & Y

Rack Layouts D1201119



Number	Cable Type	Rack (far) end	RH (near) end	Length	Part no.
1	25 pin Dsub	25-pin Dsub M	25-pin Dsub - F	140 ft	L-Com Custom
2	25 pin Dsub	25-pin Dsub M	25-pin Dsub - F	140 ft	L-Com Custom
3	37 pin Dsub	37-pin Dsub - F	37-pin Dsub - M	5 ft	
4	37 pin Dsub	37-pin Dsub - F	37-pin Dsub - M	5 ft	
5	Conec	Conec 3-pin	Conec 3-pin	5 ft	
6	Conec	Conec 3-pin	Conec 3-pin	5 ft	
7	RH Cable Assy	n/a	n/a	n/a	D1001517
8	RH Cable Assy	n/a	n/a	n/a	D1001517