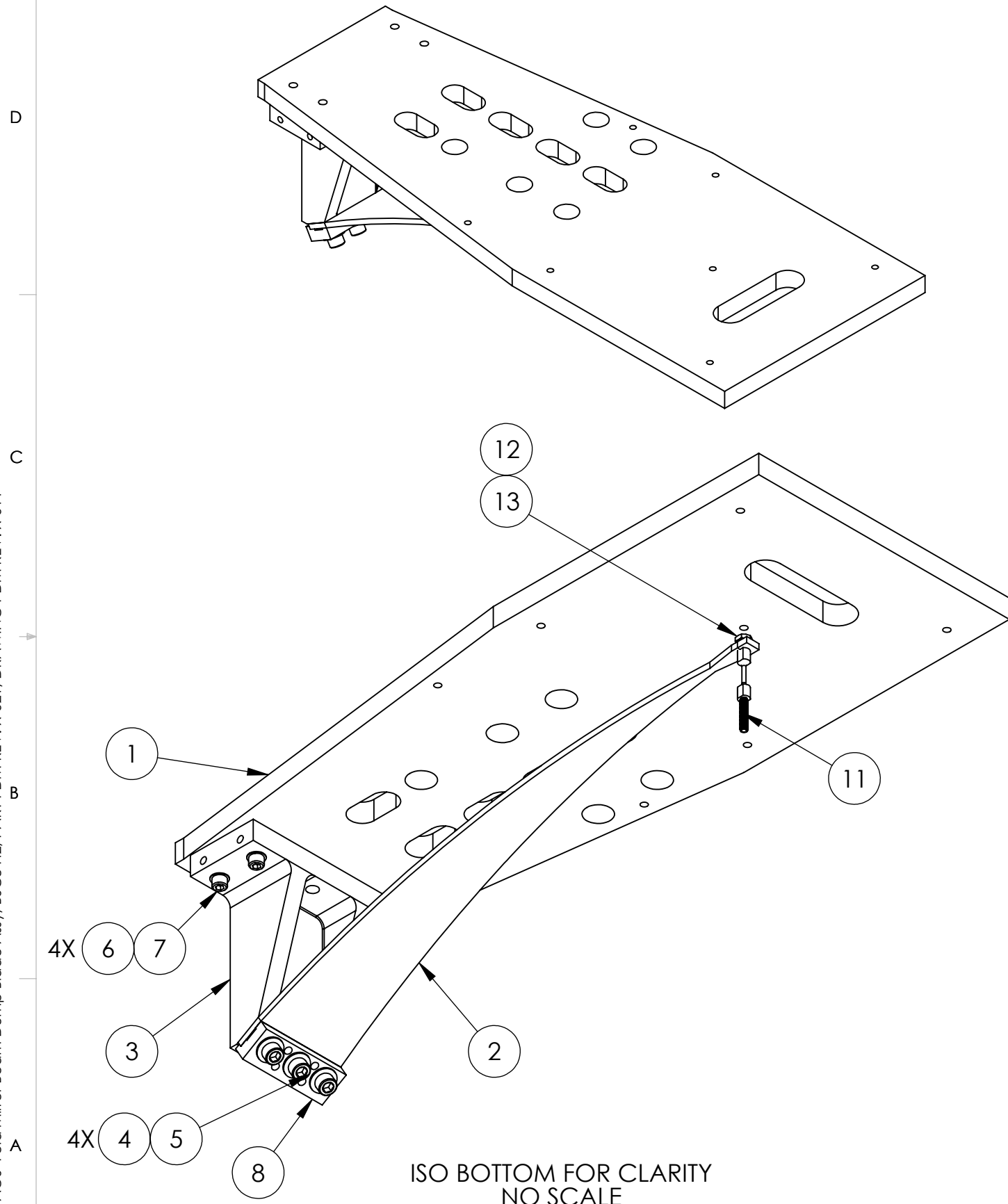


D1101895 aLIGO AOS Fold Mirror Beam Dump Blade Assy, BSC8 H2, PART PDM REV: X-021, DRAWING PDM REV: X-011

NOTES CONTINUED:
 5. APPROXIMATE WEIGHT = 15.772 LBS.

REV.	DATE	DCN #	DRAWING TREE #
v1	08 NOV 2011	E1200051	-
-	-	-	-
-	-	-	-



16	D1101184	aLIGO ACB BEND FIXTURE PLATE	1	1
15	D1101298	BLADE SPRING BENDING HOOK ASSY	-	1
14	D1101099	aLIGO ACB BEND FIXTURE	-	1
13	N-1024-A	UC-COMP, HEX NUT, #10-24, SSSL	1	-
12	90945A741	WASHER, FLAT, #10 (NAS 620-CT0 OR EQUIVALENT)	1	-
11	D1002340	SLC ACB SUSPENSION ROD	1	-
10	92200A246	SOCKET HEAD CAP SCREW, 10-24 X .875 LG, NAS 1352C-3-14 (OR EQUIV)	-	2
9	92200A240	SOCKET HEAD CAP SCREW, 10-24 X .375 LG, NAS 1352C-3-6 (OR EQUIV)	-	4
8	D1002844	SLC ACB BLADE CLAMP	1	1
7	C-2016-NA	SOCKET HEAD CAP SCREW, .25-20 X 1 LG	4	4
6	NAS 620-C416L	1/4 FLAT WASHER, .260 ID x .47 OD X .02 THK	4	4
5	C-1820-NA	U-C COMP. 5/16-18 X 1.25L, S.H.C.S.	3	3
4	98019A385	.312 FLAT WASHER, .34 ID X .69 OD X .06 T, NASM 15795-812	3	3
3	D1002609	SLC BLADE MOUNTING BRACKET	1	1
2	D1000705	FM Beam Dump Blade	1	1
1	D1200145	aLIGO AOS FM BD BAFFLE INTERFACE MOUNTING PLATE, BSC8 H2	1	1
ITEM NO.	NUMBER	DESCRIPTION	QTY	BLADE FORM/QTY.

NOTES AND TOLERANCES: (UNLESS OTHERWISE SPECIFIED)

DIMENSIONS ARE IN INCHES

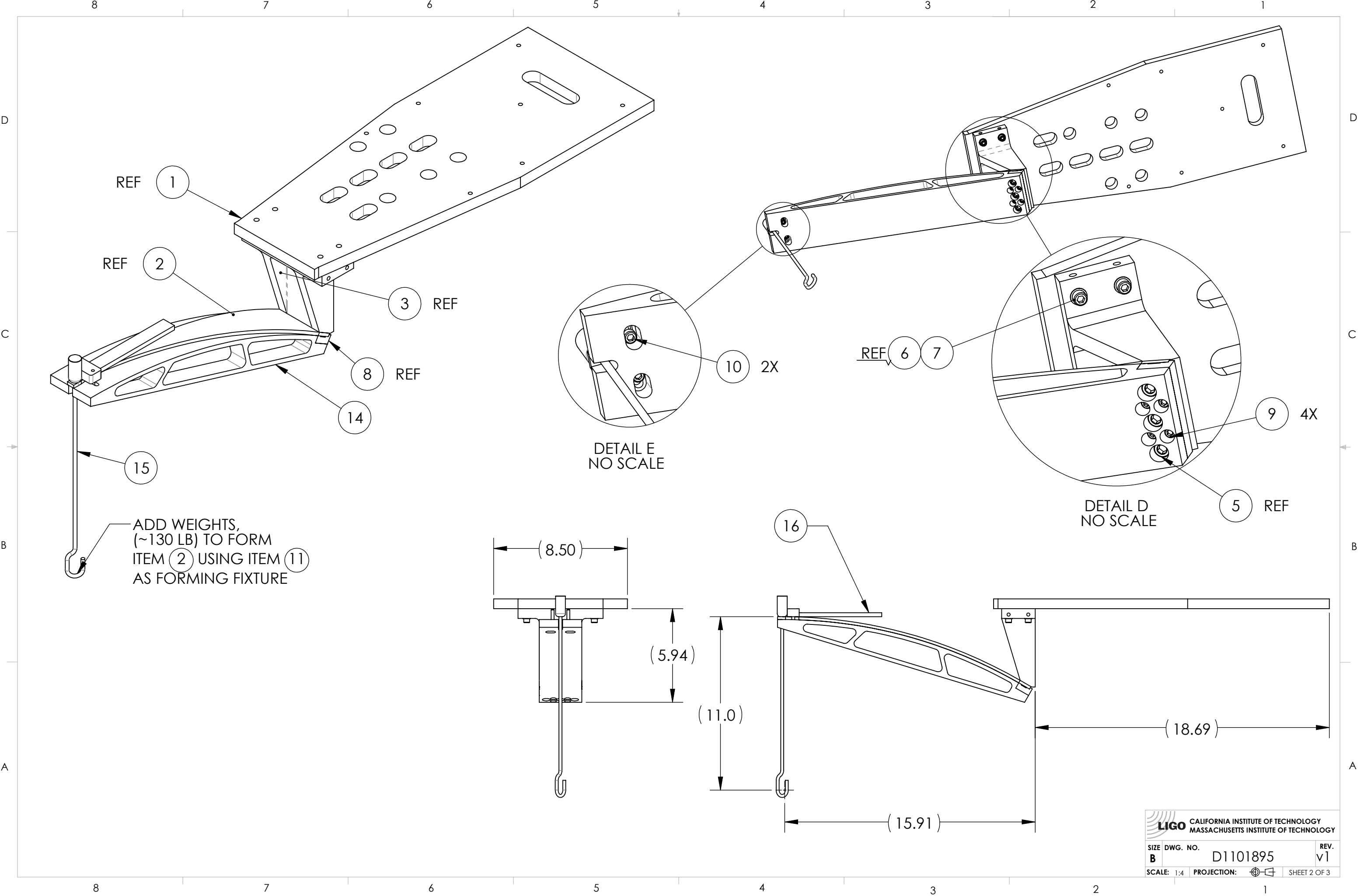
TOLERANCES:
 .XX ± .02
 .XXX ± .005
 ANGULAR ± 1.0°

1. INTERPRET DRAWING PER ASME Y14.5-1994.
 2. REMOVE ALL SHARP EDGES, .005-.015, FOR MACHINED PARTS. ROUND ALL EDGES APPROXIMATELY R.02 FOR SHEET METAL PARTS.
 3. DO NOT SCALE FROM DRAWING.
 4. ALL MACHINING FLUIDS MUST BE FULLY SYNTHETIC, FULLY WATER SOLUBLE AND FREE OF SULFUR, SILICONE, AND CHLORINE.

MATERIAL N/A **FINISH** N/A μinch

CALIFORNIA INSTITUTE OF TECHNOLOGY MASSACHUSETTS INSTITUTE OF TECHNOLOGY		PART NAME aLIGO AOS FOLD MIRROR BEAM DUMP BLADE ASSY, BSC8 H2	
SYSTEM ADVANCED LIGO	SUB-SYSTEM AOS	DESIGNER DRAFTER CHECKER APPROVAL	M. SMITH J. TERRAZAS 08 NOV 2011
NEXT ASSY D1101897		SIZE DWG. NO. B D1101895	REV. v1
		SCALE: 1:4	PROJECTION: SHEET 1 OF 3

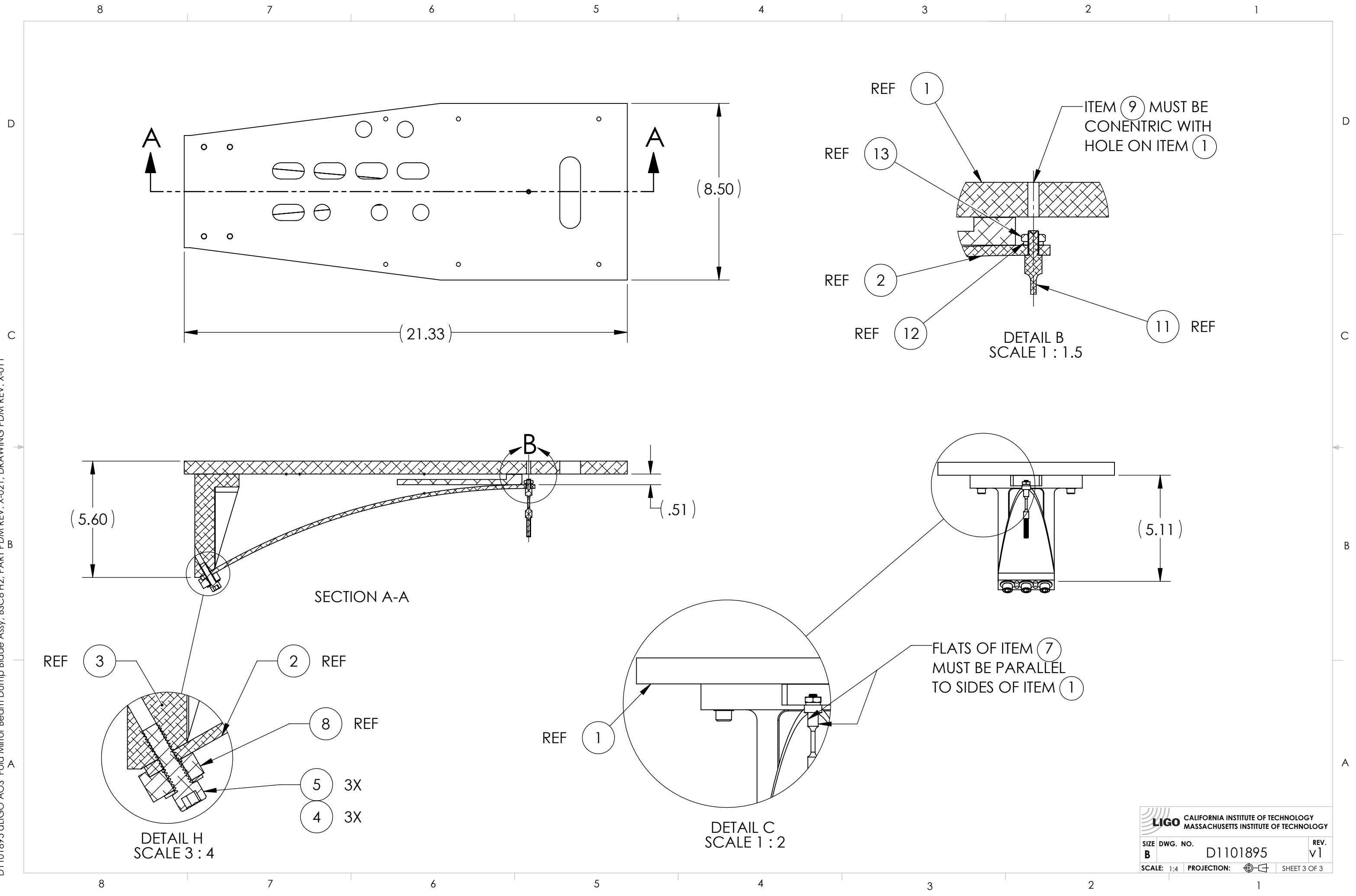
D1101895 AOS Fold Mirror Beam Dump Blade Assy, BSC8-H2, PART PDM REV: X-021, DRAWING PDM REV: X-011



LIGO CALIFORNIA INSTITUTE OF TECHNOLOGY
 MASSACHUSETTS INSTITUTE OF TECHNOLOGY

SIZE	DWG. NO.	REV.
B	D1101895	v1
SCALE: 1:4		PROJECTION:
		SHEET 2 OF 3

D1101895 aLIGO AOS Fold Mirror Beam Dump Blade Assy, BSC8-H2, PART PDM REV: X-021, DRAWING PDM REV: X-011



LIGO CALIFORNIA INSTITUTE OF TECHNOLOGY
MASSACHUSETTS INSTITUTE OF TECHNOLOGY

SIZE	DWG. NO.	REV.
B	D1101895	v1
SCALE: 1:4	PROJECTION:	SHEET 3 OF 3