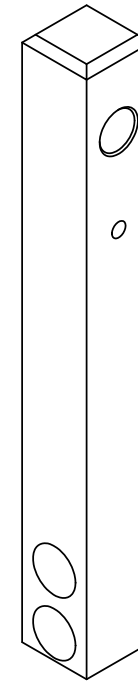
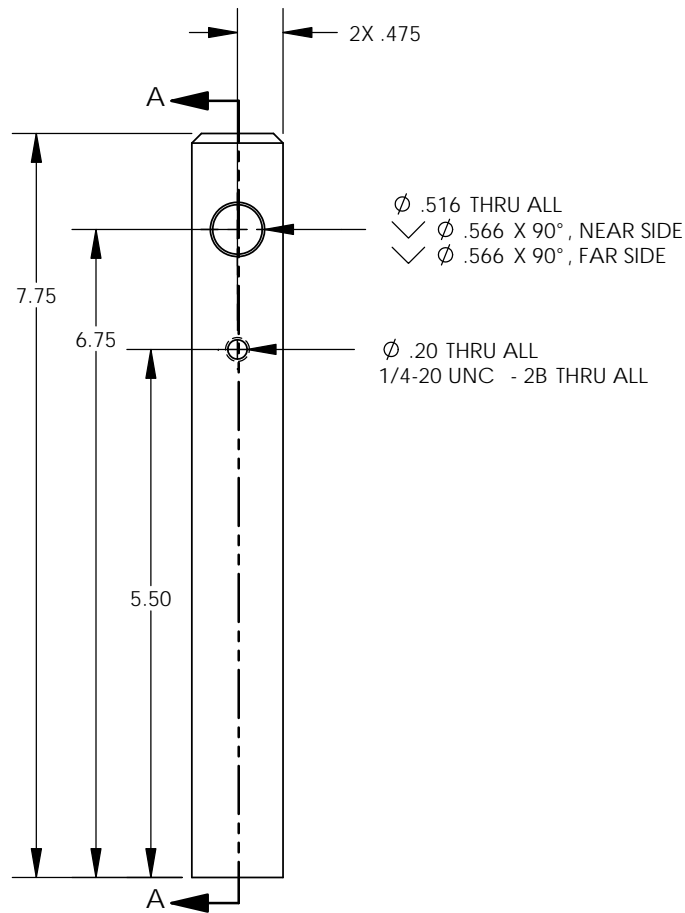
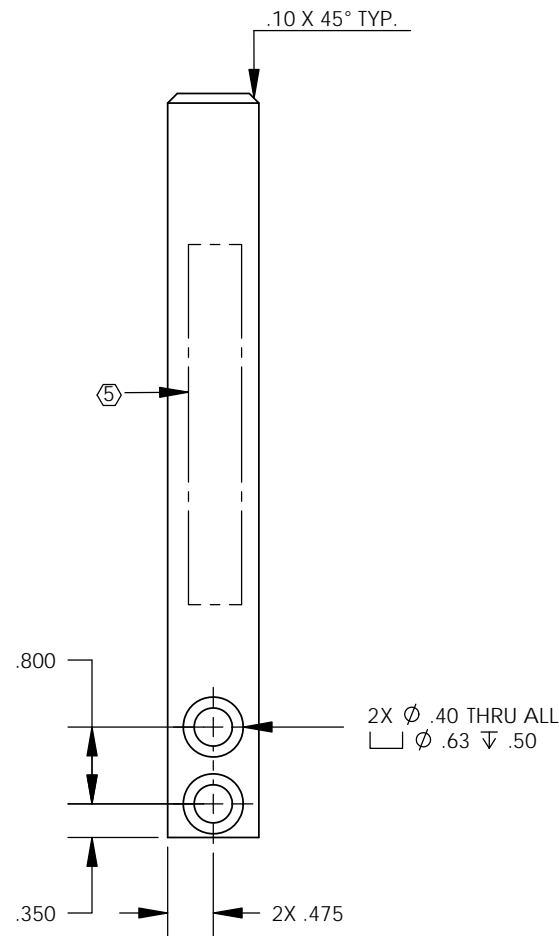
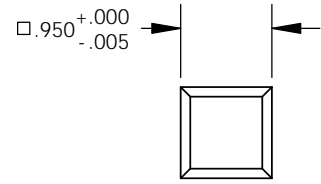


D1101932 aLIGO, AOS, VIEWPORT LEAK TEST FIXTURE, HORIZ. SUPPORT STRUT MT. STUDS, PART PDM REV. X-002, DRAWING PDM REV. X-001

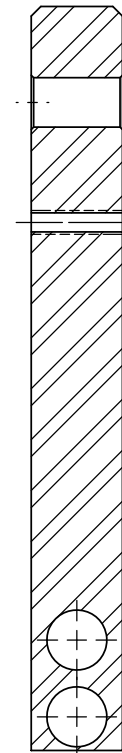
NOTES CONTINUED:

⑤ SCRIBE, ENGRAVE (A VIBRATORY TOOL MAY BE USED), LASER MARK OR MECHANICALLY STAMP (NO INKS OR DYES) DRAWING PART NUMBER, REVISION (AND VARIANT OR "TYPE" IF APPLICABLE) ON NOTED SURFACE OF PART FOLLOWED ON THE NEXT LINE WITH A THREE DIGIT SERIAL NUMBER. SERIAL NUMBERS START AT 001 FOR THE FIRST ARTICLE AND PROCEED CONSECUTIVELY. USE MINIMUM 0.12" HIGH CHARACTERS, UNLESS THE SIZE OF THE PART DICTATES SMALLER CHARACTERS. EXAMPLE: DXXXXXX-VY, TYPE-XX, S/N XXX

- 6. APPROXIMATE WEIGHT = 1.57 LB.
- 7. MACHINE ALL SURFACES TO REMOVE OXIDES AND MILL FINISH. USE OF ABRASIVE REMOVAL TECHNIQUES IS NOT ALLOWED. REFER TO LIGO-E0900364
- 8. ALL PARTS SHALL BE MANUFACTURED IN ACCORDANCE WITH LIGO SPECIFICATION E0900364.
- 11. ALL MATERIAL IS TO BE VIRGIN MATERIAL (i.e. NO WELD REPAIRS, PLUGS OR RECYCLED MATERIAL). NO REPAIRS SHALL BE MADE UNLESS APPROVED IN ADVANCE, AND IN WRITING, BY LIGO LABORATORY. REFER TO LIGO-E0900364.



ISO VIEW



SECTION A-A

REV.	DATE	DCN #	DRAWING TREE #
v1	11 OCT 2011	E1101031-x0	-
v2	26 JAN 2012	E1200079-x0	-
-	-	-	-

NOTES AND TOLERANCES: (UNLESS OTHERWISE SPECIFIED)	
DIMENSIONS ARE IN INCHES	
TOLERANCES: .XX ± .01 .XXX ± .005	
ANGULAR ± 0.5°	
MATERIAL	FINISH
304 SSSL	63 μinch

CALIFORNIA INSTITUTE OF TECHNOLOGY MASSACHUSETTS INSTITUTE OF TECHNOLOGY	PART NAME	
	ALIGO, AOS, VIEWPORT LEAK TEST FIXTURE, HORIZ. SUPPORT MT. STUD	
SYSTEM	SUB-SYSTEM	DESIGNER
ADVANCED LIGO	AOS	J.LEWIS
NEXT ASSY	D1101939	07 OCT 2011
		DRFTER
		E.SANCHEZ
		11 OCT 2011
		CHECKER
		SEE DCC
		SEE DCC
		APPROVAL
		SEE DCC
		SEE DCC

SIZE	DWG. NO.	REV.
B	D1101932	v2
SCALE: 1:2	PROJECTION:	SHEET 1 OF 1