

4

3

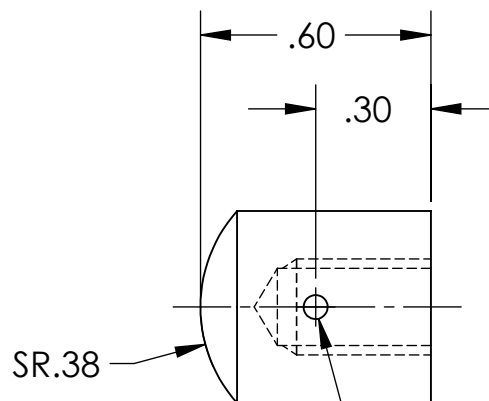
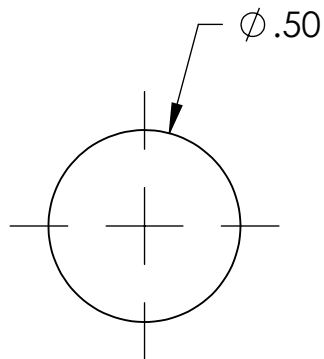
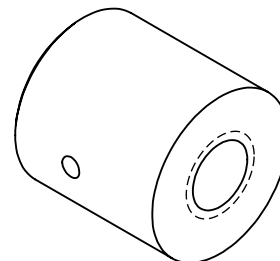
2

1

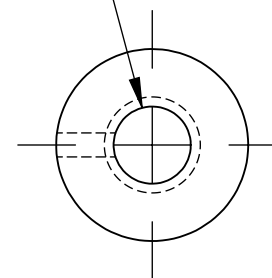
NOTES CONTINUED:

- 5. SCRIBE, ENGRAVE, OR MECHANICALLY STAMP (NO DYES OR INKS) A UNIQUE THREE DIGIT SERIAL NUMBER & REVISION NUMBER ON EACH PART. SERIAL NUMBERS START AT 001 FOR THE FIRST ARTICLE AND PROCEED CONSECUTIVELY. BAG AND TAG PARTS WITH THEIR DRAWING PART NUMBER, REVISION, VARIANT OR "TYPE" (IF APPLICABLE), AND QUANTITY. IF PARTS ARE TOO SMALL TO SCRIBE, BAGGING AND TAGGING ALONE IS SUFFICIENT.  
EXAMPLE (PART): 001-v1  
EXAMPLE (TAG): DXXXXXX-YY, TYPE-XX, QTY: TBD
- 6. MACHINE ALL SURFACES TO REMOVE OXIDES AND MILL FINISH. USE OF ABRASIVE REMOVAL TECHNIQUES IS NOT ALLOWED.

REV.	DATE	DCN #	DRAWING TREE #
v1	24 OCT 2011	E1101054	-
-	-	-	-
-	-	-	-



DRILL  $\phi$  .20  $\nabla$  .40 AND  
TAP 1/4-20 UNC-2B  $\nabla$  .35



VENT HOLE  $\phi$  .06 THRU  
TO THREADED HOLE

NOTES AND TOLERANCES: (UNLESS OTHERWISE SPECIFIED)

DIMENSIONS ARE IN INCHES

TOLERANCES:  
.XX  $\pm$  .01  
.XXX  $\pm$  .005

ANGULAR  $\pm$  0.5°

1. INTERPRET DRAWING PER ASME Y14.5-1994.
2. REMOVE ALL SHARP EDGES, R.02 MIN.
3. DO NOT SCALE FROM DRAWING.
4. ALL MACHINING FLUIDS MUST BE FULLY SYNTHETIC, FULLY WATER SOLUBLE AND FREE OF SULFUR, SILICONE, AND CHLORINE.

MATERIAL PFA440 HP (Preshrunk) FINISH 63  $\mu$ inch



SYSTEM ADVANCED LIGO SUB-SYSTEM SUS

NEXT ASSY MULTIPLE ASSYS

PART NAME CAP BODY, SEMI-ROUNDED END, EARTHQUAKE STOP

DESIGNER	D. BRIDGES	04 NOV 2011	SIZE	DWG. NO.	REV.
DRAFTER	D. BRIDGES	04 NOV 2011	A	D1102161	v1
CHECKER	B. MOORE	07 NOV 2011	SCALE: 2:1	PROJECTION:	SHEET 1 OF 1
APPROVAL					

4

3

2

1