

8

7

6

5

4

3

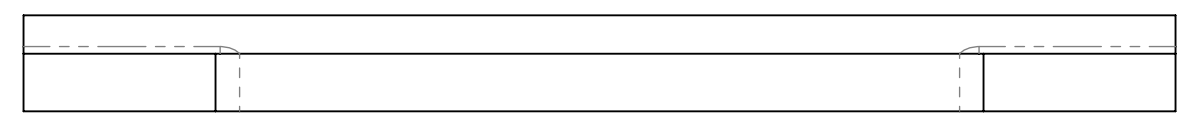
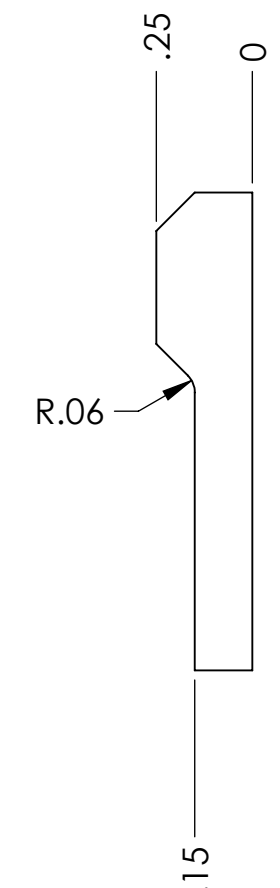
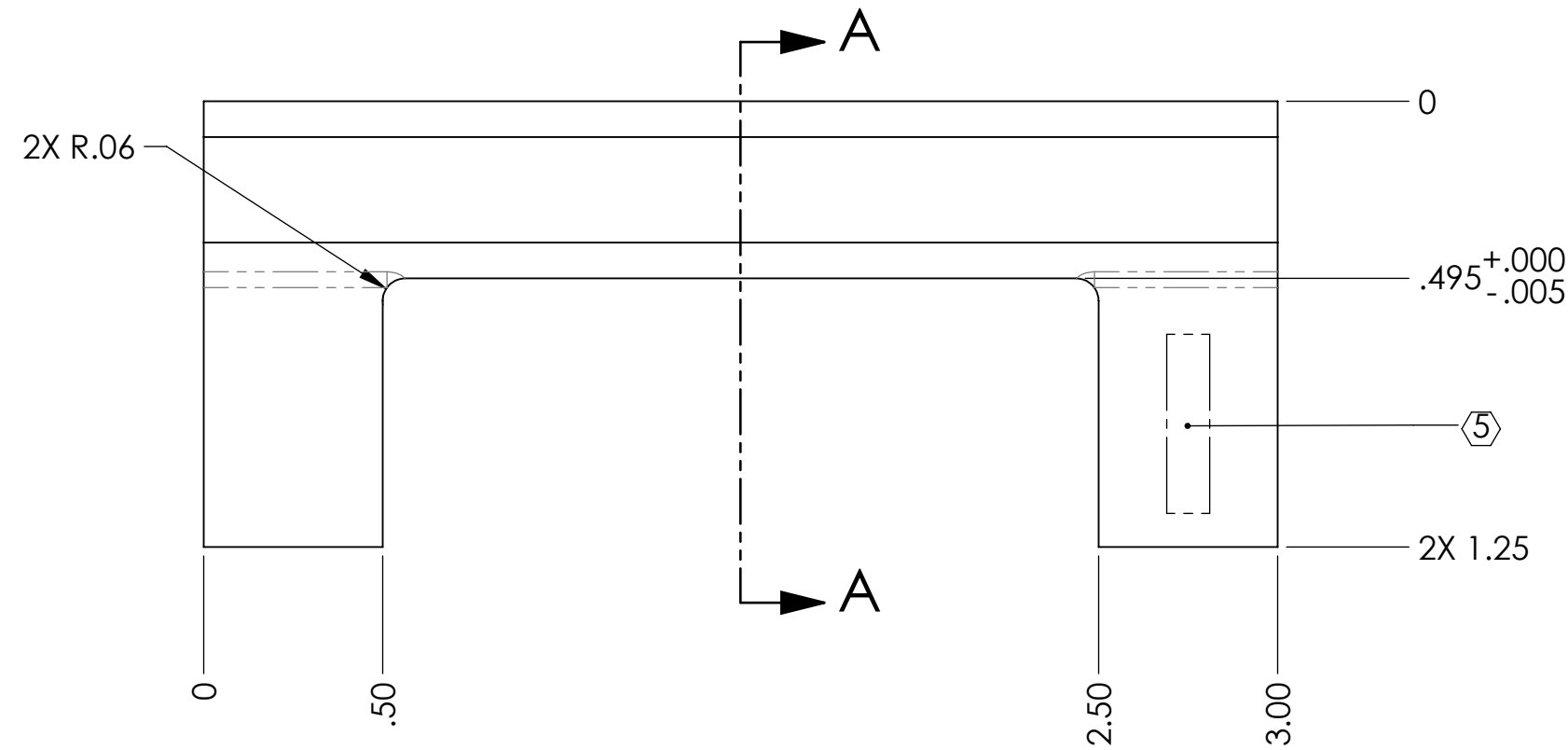
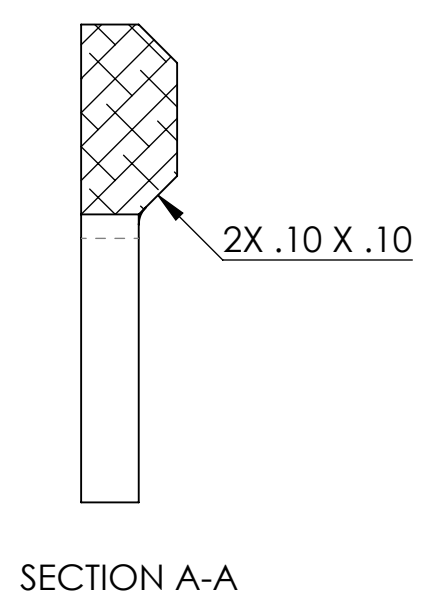
2

1

NOTES CONTINUED:

⑤ SCRIBE, ENGRAVE, OR MECHANICALLY STAMP (NO INKS OR DYES) DRAWING PART NUMBER, REVISION (AND VARIANT OR "TYPE" IF APPLICABLE) ON NOTED SURFACE OF PART FOLLOWED ON THE NEXT LINE WITH A THREE DIGIT SERIAL NUMBER. SERIAL NUMBERS START AT 001 FOR THE FIRST ARTICLE AND PROCEED CONSECUTIVELY. USE MINIMUM 0.12" HIGH CHARACTERS, UNLESS THE SIZE OF THE PART DICTATES SMALLER CHARACTERS. A VIBRATORY TOOL MAY BE USED.
 EXAMPLE: DXXXXXX-VY, TYPE-XX, S/N XXX

REV.	DATE	DCN #	DRAWING TREE #
v1	24 OCT 2011	E1101054	-
-	-	-	-
-	-	-	-



NOTES AND TOLERANCES: (UNLESS OTHERWISE SPECIFIED)				LIGO CALIFORNIA INSTITUTE OF TECHNOLOGY MASSACHUSETTS INSTITUTE OF TECHNOLOGY		PART NAME		
DIMENSIONS ARE IN INCHES TOLERANCES: .XX ± .01 .XXX ± .005 ANGULAR ± 0.5°				1. INTERPRET DRAWING PER ASME Y14.5-1994. 2. REMOVE ALL SHARP EDGES, R.02 MIN. 3. DO NOT SCALE FROM DRAWING. 4. ALL MACHINING FLUIDS MUST BE FULLY SYNTHETIC, FULLY WATER SOLUBLE AND FREE OF SULFUR, SILICONE, AND CHLORINE.		ADVANCED LIGO		BASE PLATE, WIRE JIG CLAMP
						MATERIAL 304, 316 OR 302 SSSL		FINISH 63 μinch
				NEXT ASSY WIRE JIG CLAMP ASSY, HAM TRIPLE		DESIGNER D. BRIDGES 09 NOV 2011	SIZE DWG. NO. B D1102180	REV. v1
						DRAFTER D. BRIDGES 07 DEC 2011	SCALE: 2:1	PROJECTION:
						CHECKER B. MOORE 08 DEC 2011	SHEET 1 OF 1	
						APPROVAL		

D1102180_Advanced_LIGO_SUS_HXTS_Base_Plate_Wire_Jig_Clamp_PART PDM REV: X-000, DRAWING PDM REV:

8

7

6

5

4

3

2

1