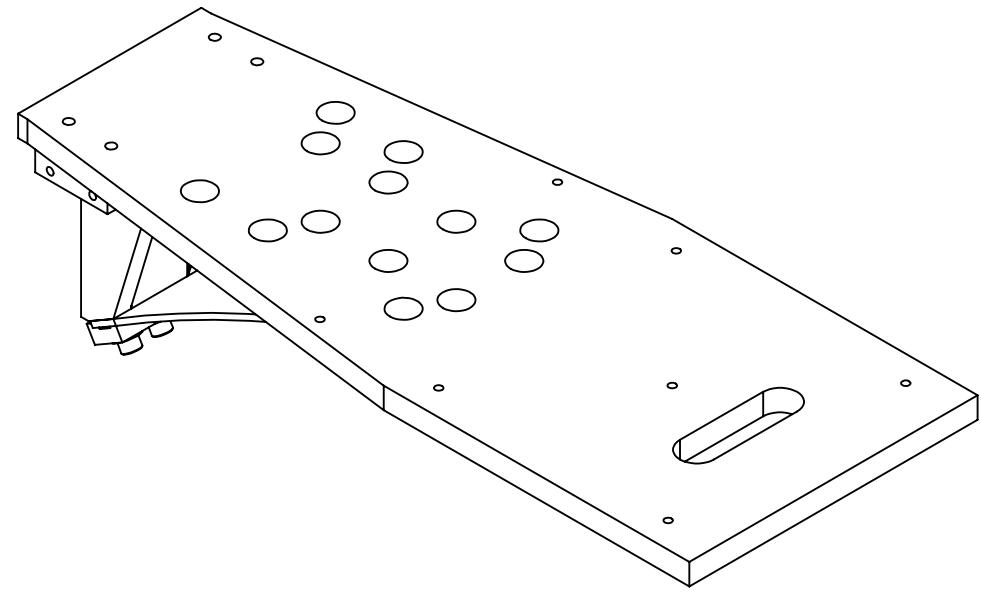
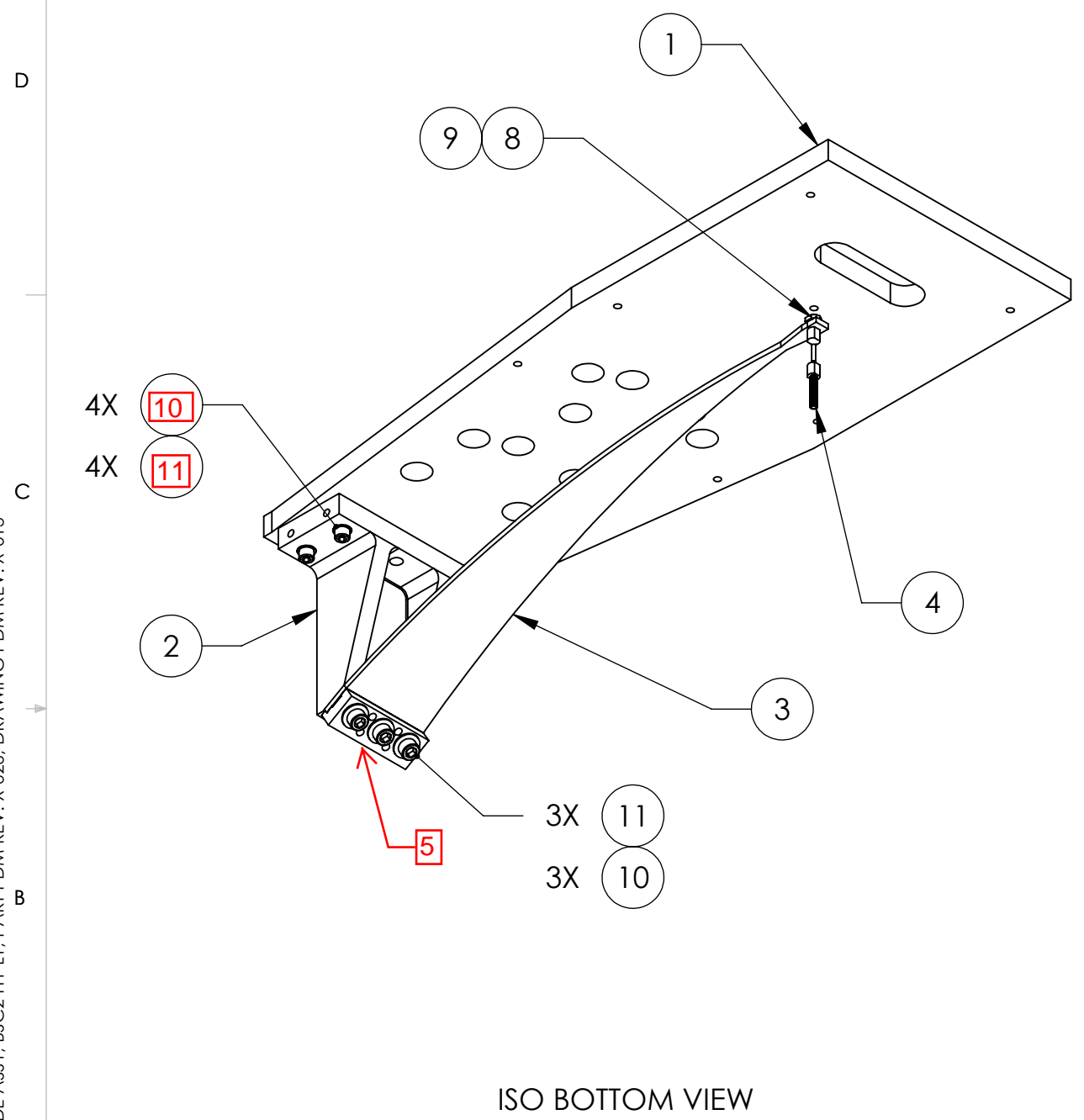


D1200140_aLIGO AOS ITM ELLIPTICAL BAFFLE BLADE ASSY, BSC2 H1-L1, PART PDM REV: X-026, DRAWING PDM REV: X-013

NOTES CONTINUED:
 5. APPROXIMATE WEIGHT = 34.833 LB.
 6. TORQUE SHCS TO VALUES SPECIFIED IN LIGO-T1 100066.

REV.	DATE	DCN #	BOM #
v1	03 OCT 2011	E1101007	E1101045
-	-	-	-
-	-	-	-



11	C-1820-NA	U-C COMP. 5/16-18 X 1.25L, S.H.C.S.	Ag-PLATED 300 SSSL	7
10	98019A385	.312 FLAT WASHER, .34 ID X .69 OD X .06 T, NASM 15795-812	300 SSSL	7
9	90945A741	WASHER, FLAT, #10 (NAS 620-C10 OR EQUIVALENT)	300 SSSL	1
8	N-1024-A	UC-COMP, HEX NUT, #10-24, SSSL	Ag-PLATED 300 SSSL	1
7	C-2016-NA	SOCKET HEAD CAP SCREW, .25-20 X 1 LG	Ag-PLATED 300 SSSL	4
6	NAS 620-C4161	1/4 FLAT WASHER, .260 ID x .47 OD X .02 THK	300 SSSL	4
5	D1002844	SLC ACB BLADE CLAMP	304 SSSL	1
4	D1200781-V2	SLC ACB SUSPENSION ROD	MARAGING STEEL C250	1
3	D1002753	ITM Elliptical Blade	MARAGING STEEL C250	1
2	D1002609	SLC BLADE MOUNTING BRACKET	304 SSSL	1
1	D1200139	aLIGO AOS ITM BAFFLE INTERFACE MOUNTING PLATE, BSC2 H1-L1	304 SSSL	1
ITEM NO.	PART NUMBER	DESCRIPTION	MATERIAL	QTY

PARTS LIST

NOTES AND TOLERANCES: (UNLESS OTHERWISE SPECIFIED)

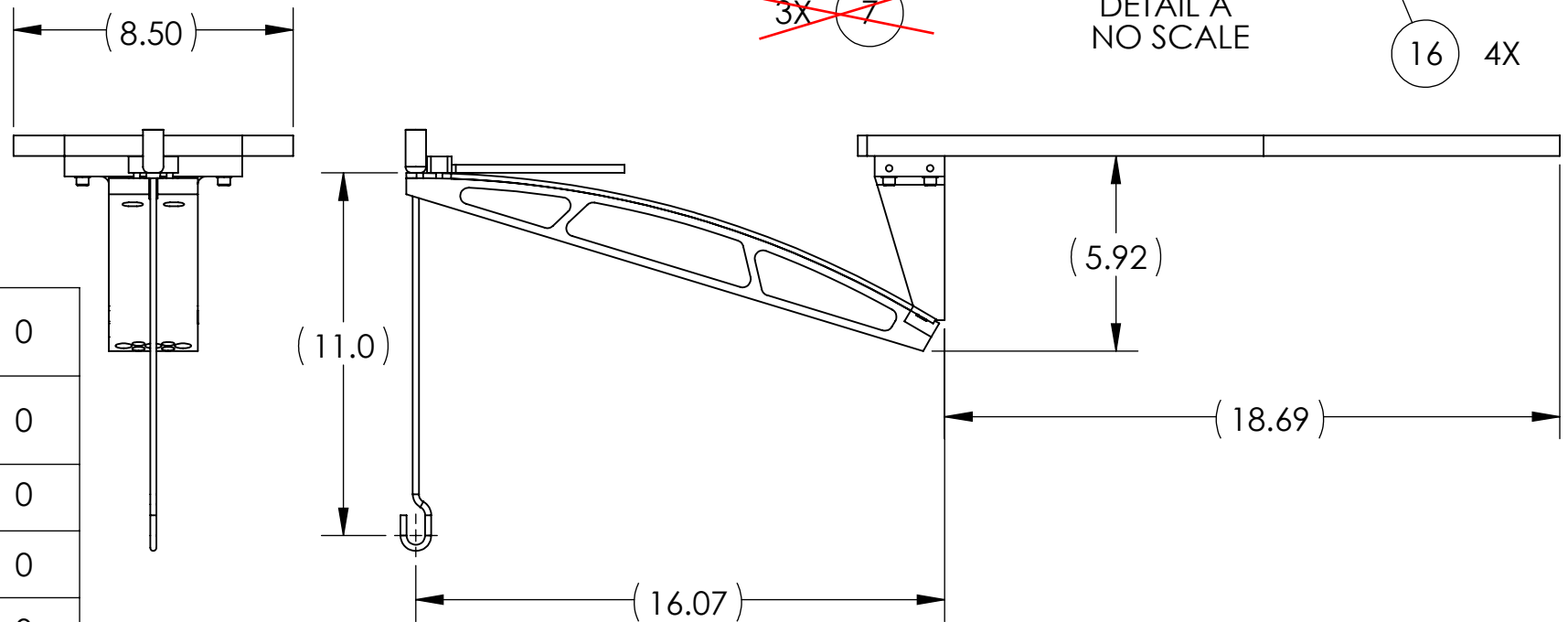
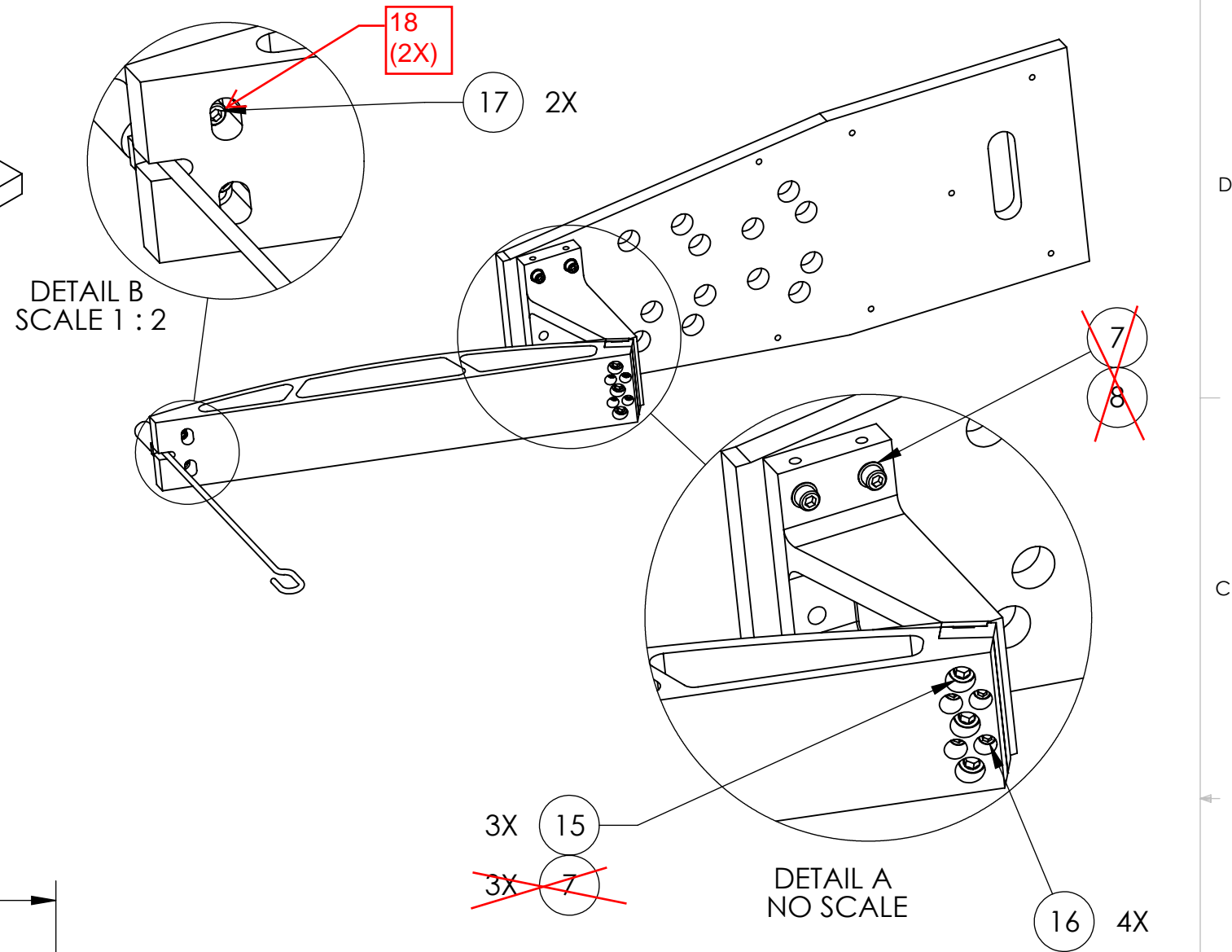
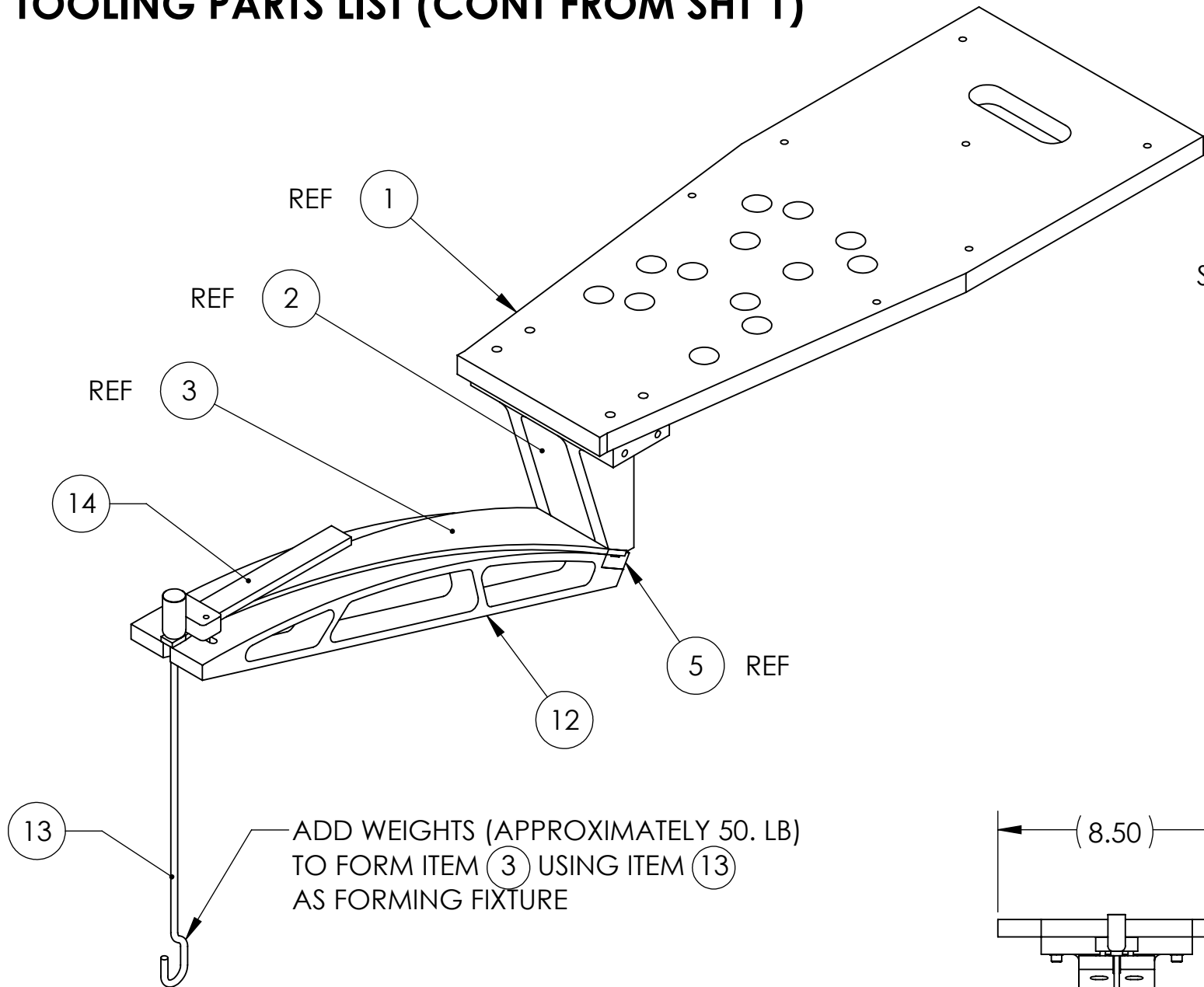
DIMENSIONS ARE IN INCHES
 TOLERANCES:
 .XX ± .02
 .XXX ± .005
 ANGULAR ± 1.0°

1. INTERPRET DRAWING PER ASME Y14.5-1994.
 2. REMOVE ALL SHARP EDGES, .005-.015, FOR MACHINED PARTS. ROUND ALL EDGES APPROXIMATELY R.02 FOR SHEET METAL PARTS.
 3. DO NOT SCALE FROM DRAWING.
 4. ALL MACHINING FLUIDS MUST BE FULLY SYNTHETIC, FULLY WATER SOLUBLE AND FREE OF SULFUR, SILICONE, AND CHLORINE.

CALIFORNIA INSTITUTE OF TECHNOLOGY MASSACHUSETTS INSTITUTE OF TECHNOLOGY		PART NAME aLIGO AOS ITM ELLIPTICAL BAFFLE BLADE ASSY, BSC2 H1-L1	
SYSTEM ADVANCED LIGO	SUB-SYSTEM AOS	DESIGNER M. RUIZ	DATE 25 JAN 2012
MATERIAL N/A	FINISH N/A μinch	DRAFTER J. TERRAZAS	SIZE DWG. NO. B
NEXT ASSY D1101885	CHECKER L. AUSTIN	APPROVAL C. TORRIE	REV. V2

SCALE: 1:4 PROJECTION: SHEET 1 OF 3

TOOLING PARTS LIST (CONT FROM SHT 1)



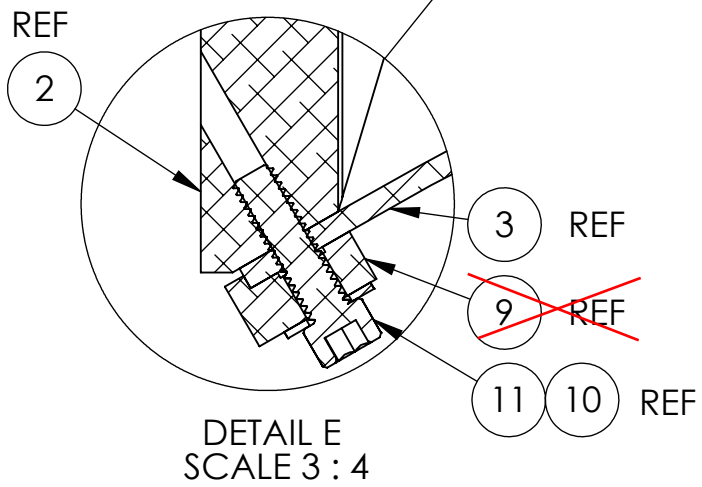
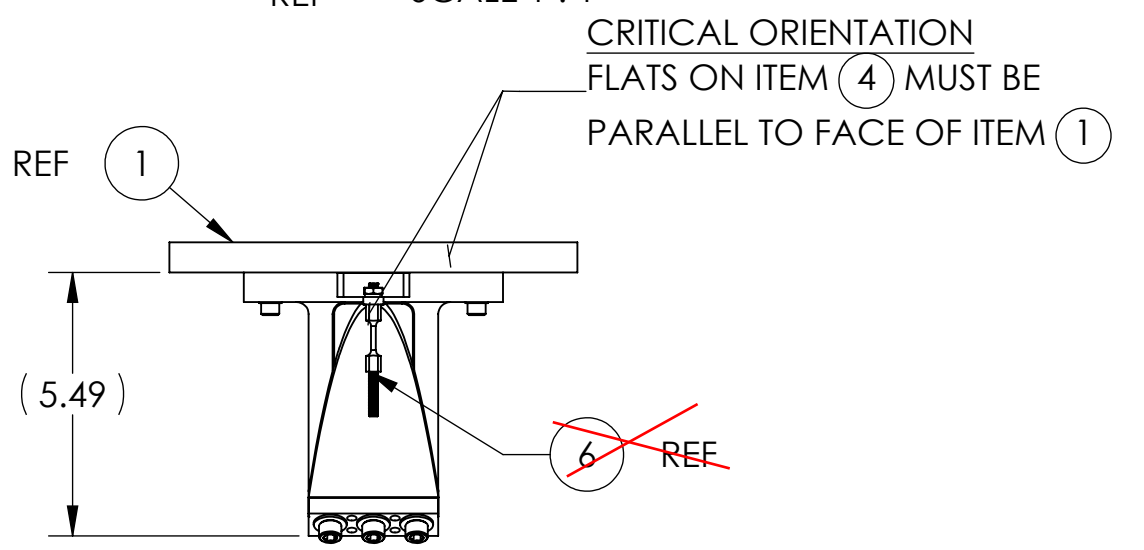
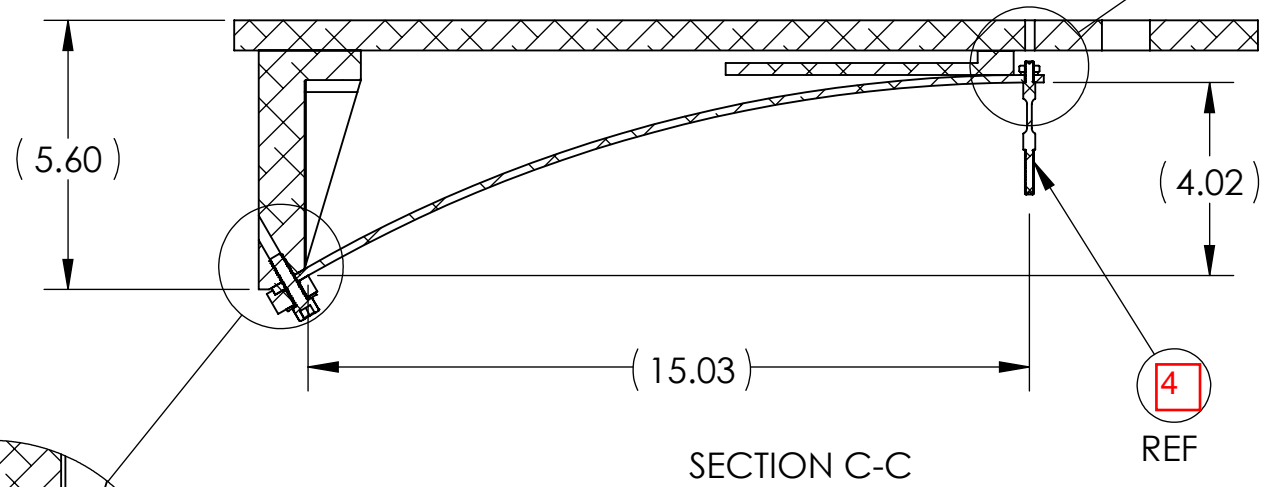
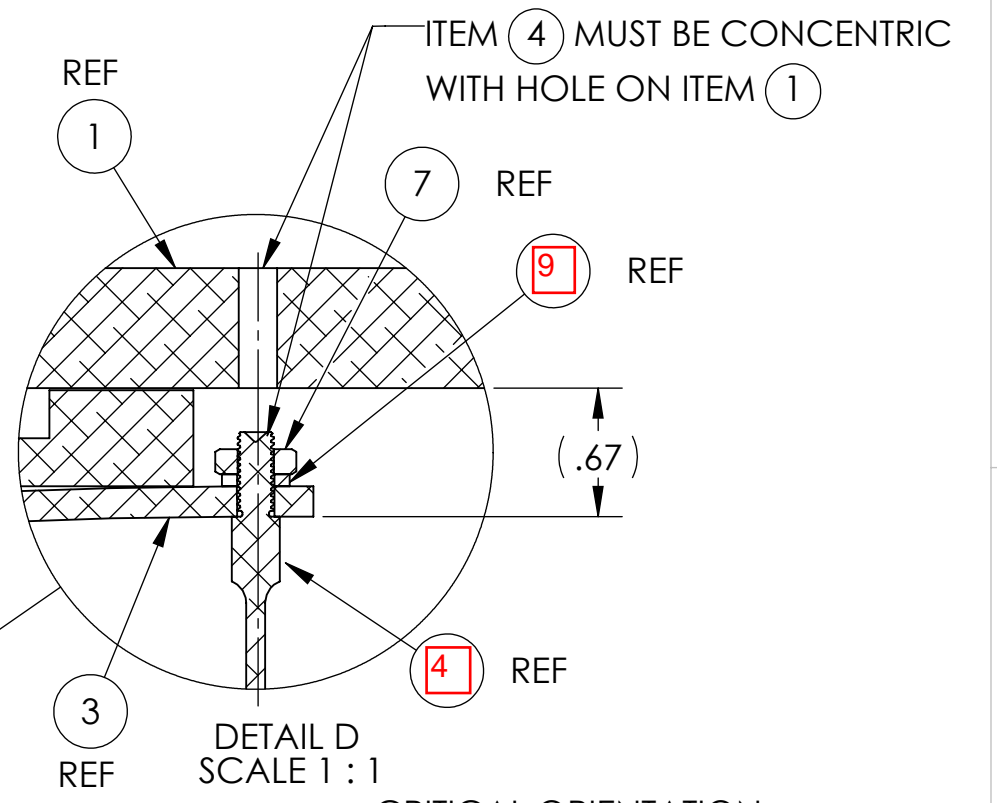
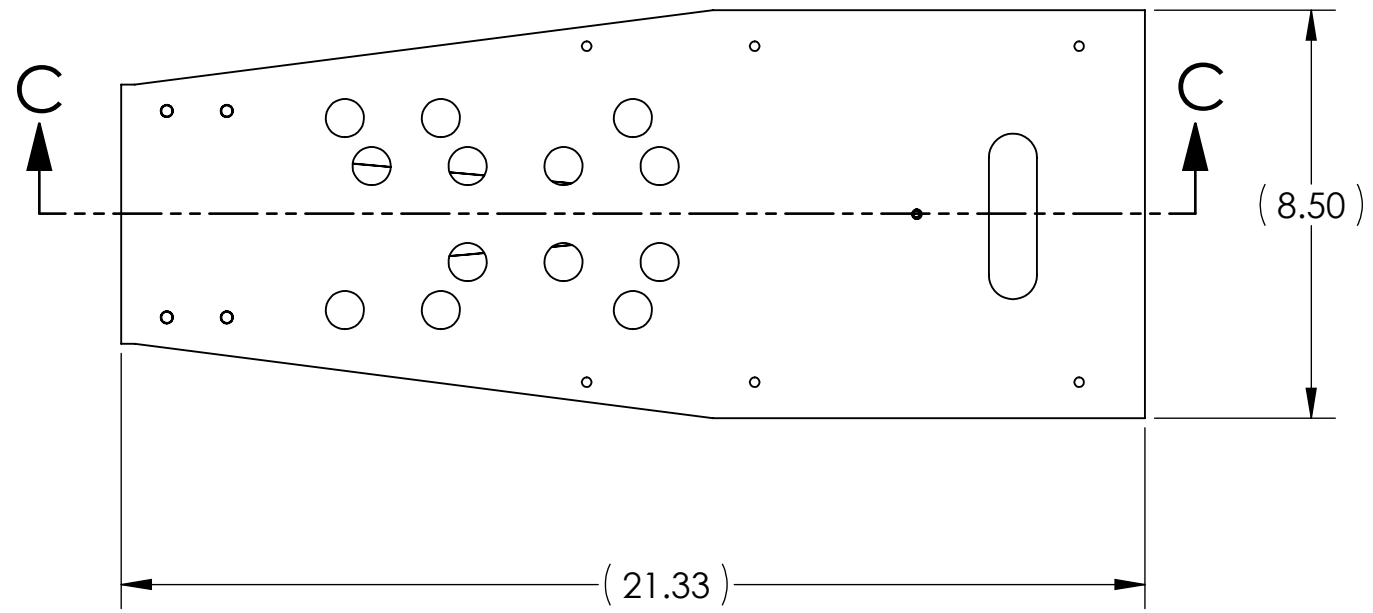
ITEM NO.	PART NUMBER	DESCRIPTION	MATERIAL	QTY	TOTAL
18	90945A741	#10 WASHER	300 SSSL	2	
17	92200A246	SOCKET HEAD CAP SCREW, 10-24 X .875 LG, NAS 1352C-3-14 (OR EQUIV)	300 SSSL	2	0
16	C-2006-NA	SHCS, 1/4-20 X 3/8"	AG-PLATED 18-8 SSSL	4	0
15	C-1820-NA	U-C COMP. 5/16-18 X 1.25L, S.H.C.S.	Ag-PLATED 300 SSSL	3	0
14	D1101184	αLIGO ACB BEND FIXTURE PLATE	6061-T6 Al	1	0
13	D1101298	BLADE SPRING BENDING HOOK ASSY	304 SSSL	1	0
12	D1101099	αLIGO ACB BEND FIXTURE	6061-T6 Al	1	0
ITEM NO.	PART NUMBER	DESCRIPTION	MATERIAL	QTY	TOTAL

**BLADE FORMING DETAILS
REFER TO E110867 FOR PROCEDURE**

 CALIFORNIA INSTITUTE OF TECHNOLOGY
 MASSACHUSETTS INSTITUTE OF TECHNOLOGY
 SIZE DWG. NO. **B** D1200140 REV. **V2**
 SCALE: 1:4 PROJECTION:  SHEET 2 OF 3

D1200140_αLIGO AOS ITEM ELLIPTICAL BAFFLE BLADE ASSY, BSC2 H1-L1, PART PDM REV: X-026, DRAWING PDM REV: X-013

D1200140_AOS_ITM_ELLIPTICAL_BAFFLE_BLADE_ASSY_BSC2_HI-I-1, PART PDM REV: X-026, DRAWING PDM REV: X-013



**BLADE MOUNTING DETAILS
REFER TO E110867 FOR PROCEDURE**

LIGO CALIFORNIA INSTITUTE OF TECHNOLOGY MASSACHUSETTS INSTITUTE OF TECHNOLOGY	
SIZE DWG. NO. B D1200140	REV. V2
SCALE: 1:4 PROJECTION:	SHEET 3 OF 3