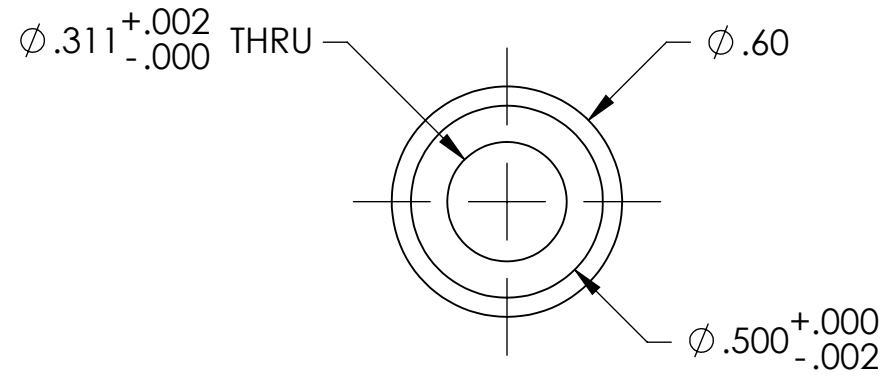
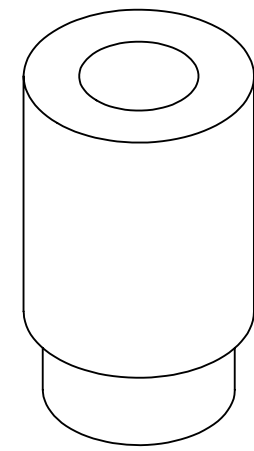
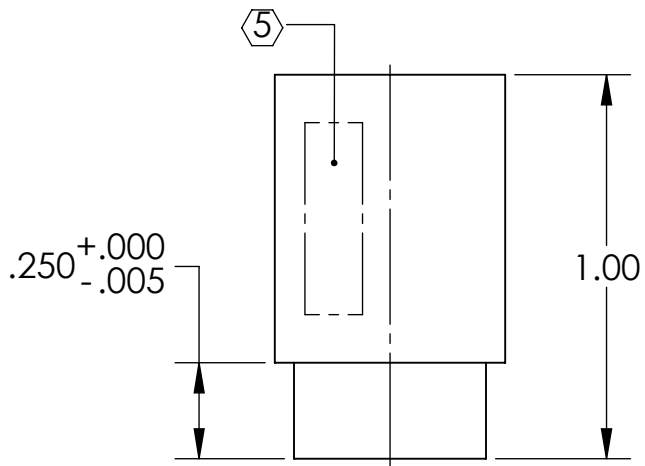


NOTES CONTINUED:

- 5. SCRIBE, ENGRAVE, OR MECHANICALLY STAMP (NO INKS OR DYES) DRAWING PART NUMBER, REVISION (AND VARIANT OR "TYPE" IF APPLICABLE) ON NOTED SURFACE OF PART FOLLOWED ON THE NEXT LINE WITH A THREE DIGIT SERIAL NUMBER. SERIAL NUMBERS START AT 001 FOR THE FIRST ARTICLE AND PROCEED CONSECUTIVELY. USE MINIMUM 0.12" HIGH CHARACTERS, UNLESS THE SIZE OF THE PART DICTATES SMALLER CHARACTERS. A VIBRATORY TOOL MAY BE USED. EXAMPLE: DXXXXXX-VY, TYPE-XX, S/N XXX
- 6. MACHINE ALL SURFACES TO REMOVE OXIDES AND MILL FINISH. USE OF ABRASIVE REMOVAL TECHNIQUES IS NOT ALLOWED.
- 7. ALL PARTS SHALL BE MANUFACTURED IN ACCORDANCE WITH LIGO SPECIFICATION E0900364.

| REV. | DATE        | DCN #    | DRAWING TREE # |
|------|-------------|----------|----------------|
| v1   | 07 FEB 2012 | E1200182 | -              |
| -    | -           | -        | -              |
| -    | -           | -        | -              |



NOTES AND TOLERANCES: (UNLESS OTHERWISE SPECIFIED)

|   |  |
|---|--|
| DIMENSIONS ARE IN INCHES                | 1. INTERPRET DRAWING PER ASME Y14.5-1994.  |
| TOLERANCES:<br>.XX ± .01<br>.XXX ± .005 | 2. REMOVE ALL SHARP EDGES, R.02 MIN.   |
| ANGULAR ± 0.5°                          | 3. DO NOT SCALE FROM DRAWING.  |
|   | 4. ALL MACHINING FLUIDS MUST BE FULLY SYNTHETIC, FULLY WATER SOLUBLE AND FREE OF SULFUR, SILICONE, AND CHLORINE. |
| <b>MATERIAL</b>                         | <b>FINISH</b>  |
| 6061-T6 Al                              | 63 μinch   |

**LIGO** CALIFORNIA INSTITUTE OF TECHNOLOGY  
MASSACHUSETTS INSTITUTE OF TECHNOLOGY

SYSTEM: **ADVANCED LIGO** SUB-SYSTEM: **SUS**

NEXT ASSY: **MULTIPLE ASSYS**

|                   |            |  |                      |
|-------------------|------------|--|----------------------|
| <b>PART NAME</b>  |            | <b>ALUMINUM BUSHING, MAGNET FIXTURE, HLTS/HSTS</b> |                      |
| <b>DESIGNER</b>   | D. BRIDGES | 07 FEB 2012  | <b>SIZE DWG. NO.</b> |
| <b>DRAFTER</b>    | D. BRIDGES | 07 FEB 2012  | <b>A D1200234</b>    |
| <b>CHECKER</b>    | B. MOORE   | 08 FEB 2012  | <b>REV.</b>          |
| <b>APPROVAL</b>   |            |  | <b>v1</b>            |
| <b>SCALE:</b> 2:1 |            | <b>PROJECTION:</b>                                 | SHEET 1 OF 1         |