

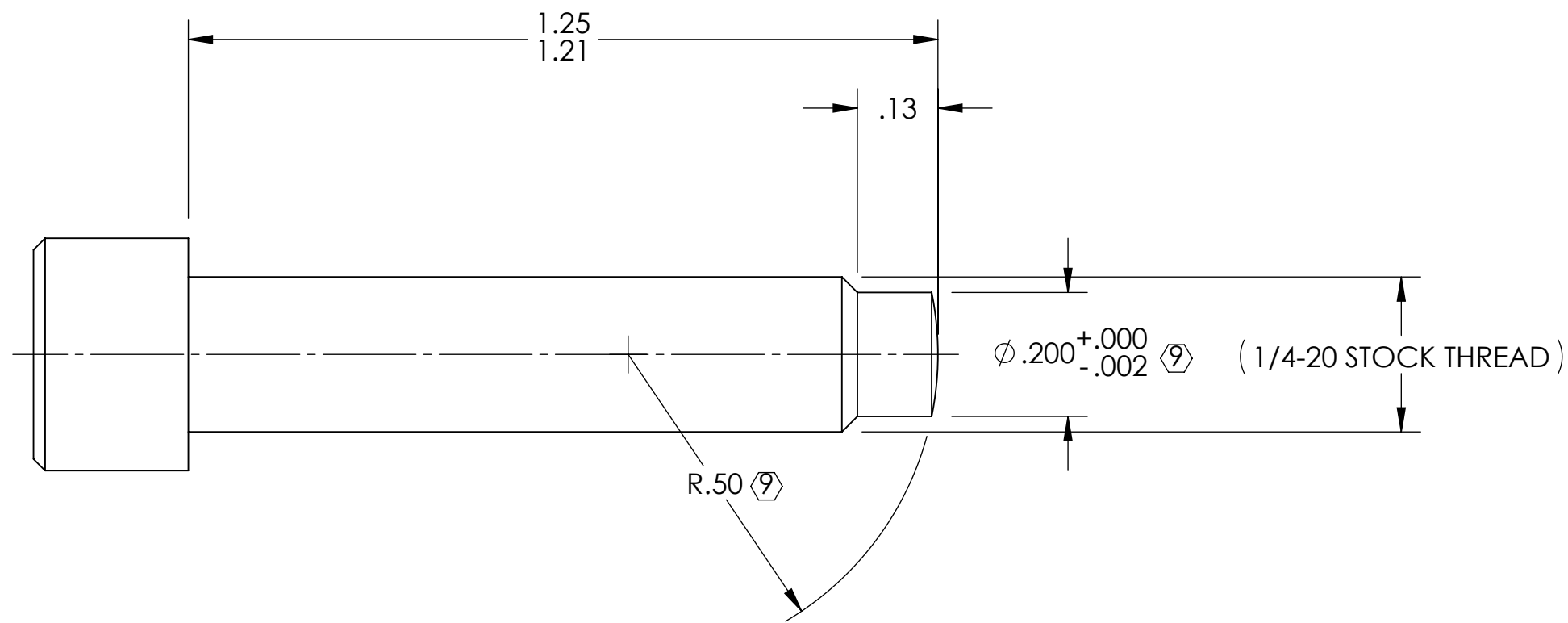
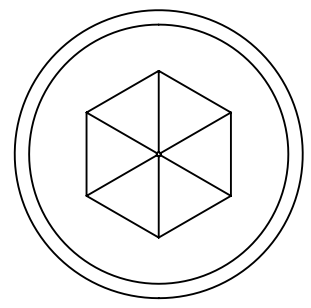
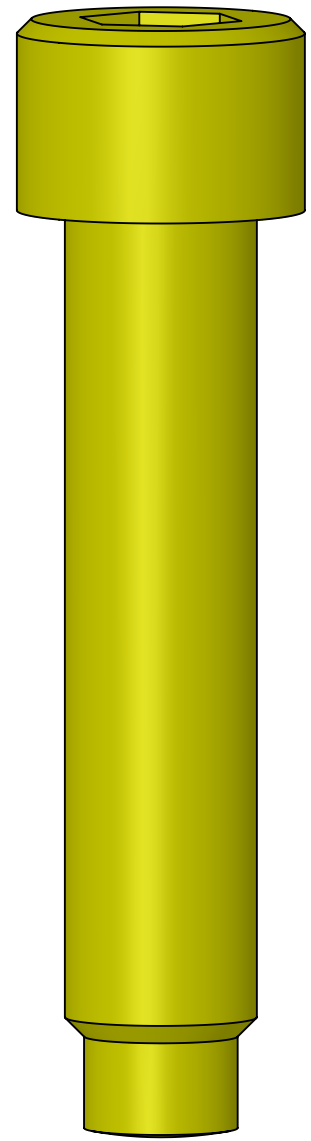
8 7 6 5 4 3 2 1

**NOTES CONTINUED:**  
 5. BAG AND TAG LOT WITH DRAWING NUMBER, REVISION, QUANTITY, AND LOT SERIAL NUMBER. LOT SERIAL NUMBERS START AT 001 AND PROCEED CONSECUTIVELY. EXAMPLE (TAG): DXXXXXX-VY, QTY: X, LOT S/N 001.  
 6. MASS: 0.023 LB [10.5 G].  
 7. ALL PARTS SHALL BE MANUFACTURED IN ACCORDANCE WITH LIGO SPECIFICATION E0900364.

REV.	DATE	DCN #	DRAWING TREE #
V1	11 APR 2012	E1101214	-
-	-	-	-
-	-	-	-

Ⓢ MAKE FROM: -0 > McMASTER-CARR P/N 92200A544 OR EQUIVALENT PER MS16995. (SOCKET HEAD CAP SCREW, 1/4-20 UNC-3A FULLY THREADED, 300 SERIES STAINLESS STEEL)  
 -1 > UC COMPONENT P/N C-2020-NA OR EQUIVALENT. (SOCKET HEAD CAP SCREW, 1/4-20 FULLY THREADED, SILVER PLATED 18-8 STAINLESS STEEL)

Ⓣ 63 μINCH Ra FINISH APPLIES ONLY TO MACHINED SURFACES. STOCK THREAD AND PART SURFACES TO BE UN-MARRED.



D1200404 cLIGO TMS Lower Stage Spring Adjuster Screw, PART PDM REV: X-004, DRAWING PDM REV: X-004

<b>NOTES AND TOLERANCES: (UNLESS OTHERWISE SPECIFIED)</b> DIMENSIONS ARE IN INCHES TOLERANCES: .XX ± .01 .XXX ± .005 ANGULAR ± 1.0°		1. INTERPRET DRAWING PER ASME Y14.5-1994. 2. REMOVE ALL SHARP EDGES, .005-.015. 3. DO NOT SCALE FROM DRAWING. 4. ALL MACHINING FLUIDS MUST BE FULLY SYNTHETIC, FULLY WATER SOLUBLE AND FREE OF SULFUR, SILICONE, AND CHLORINE.		<b>LIGO</b> CALIFORNIA INSTITUTE OF TECHNOLOGY MASSACHUSETTS INSTITUTE OF TECHNOLOGY		PART NAME cLIGO TMS LOWER STAGE SPRING ADJUSTER SCREW	
MATERIAL Ⓢ		FINISH 63 μinch Ra Ⓣ		SYSTEM ADVANCED LIGO		SUB-SYSTEM AOS	
NEXT ASSY D1200525		DESIGNER C. CONLEY 03 MAR 2012		DRAFTER C. CONLEY 20 MAR 2012		SIZE DWG. NO. B D1200404	
APPROVAL SEE DCN		CHECKER SEE DCN		REV. V2		SCALE: NONE PROJECTION:  SHEET 1 OF 1	

8 7 6 5 4 3 2 1