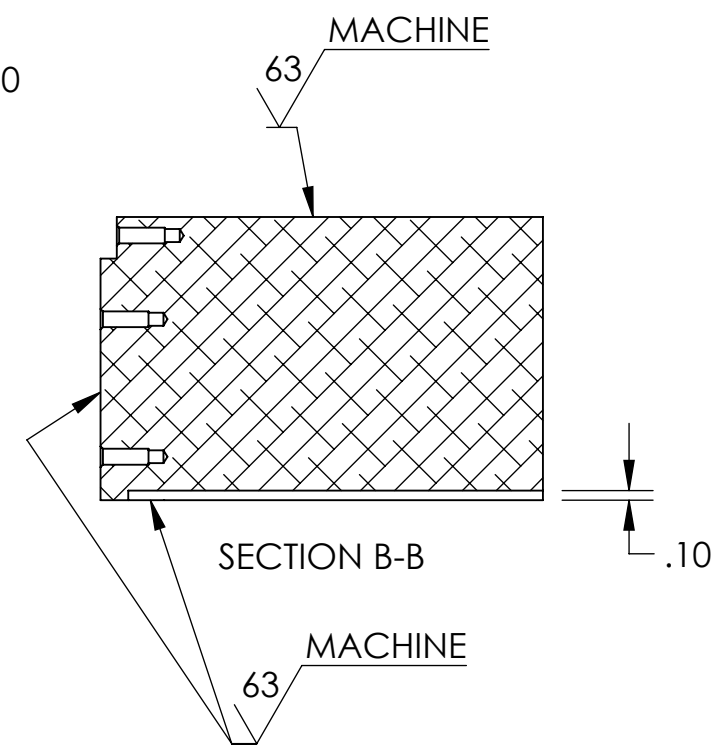
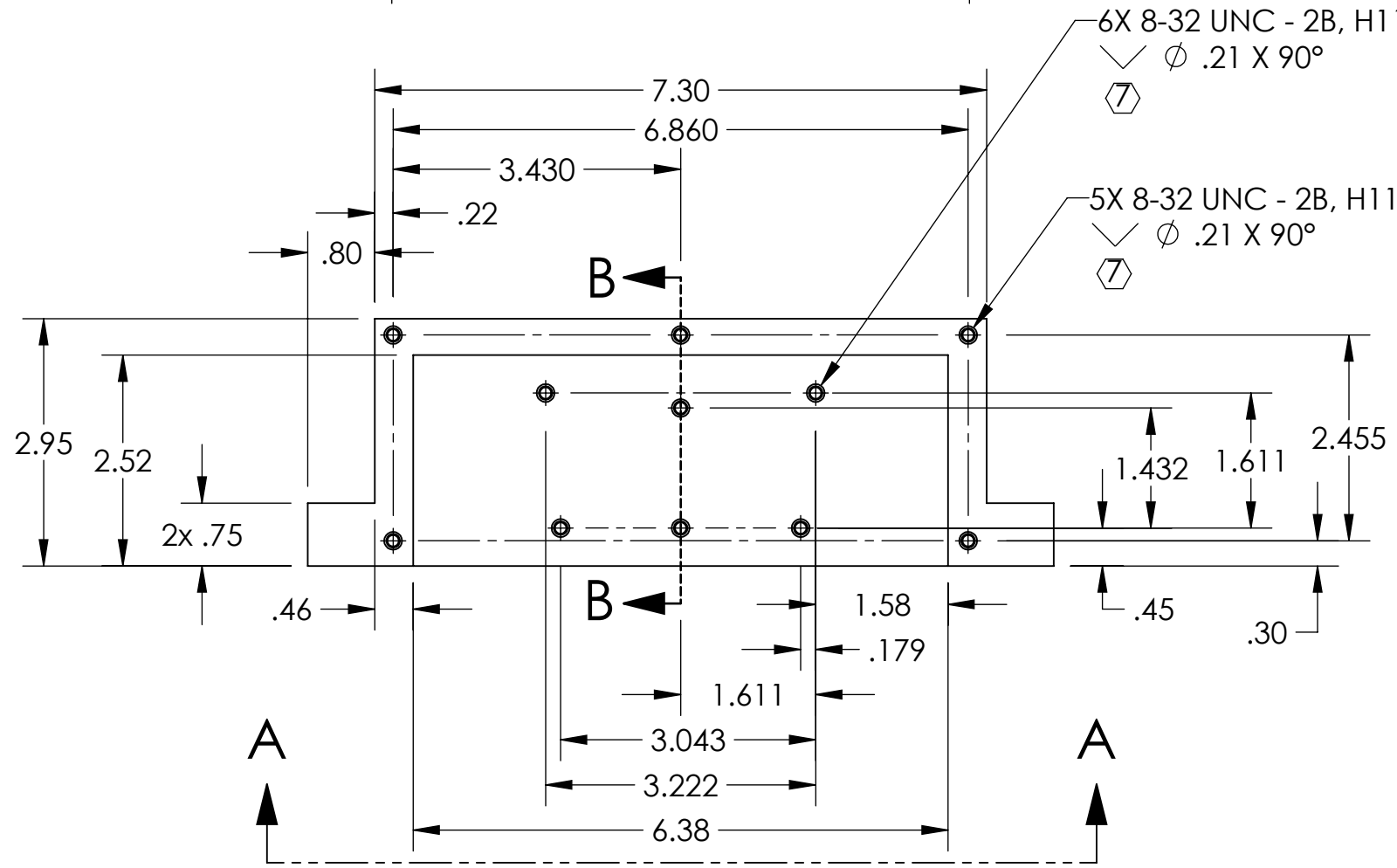
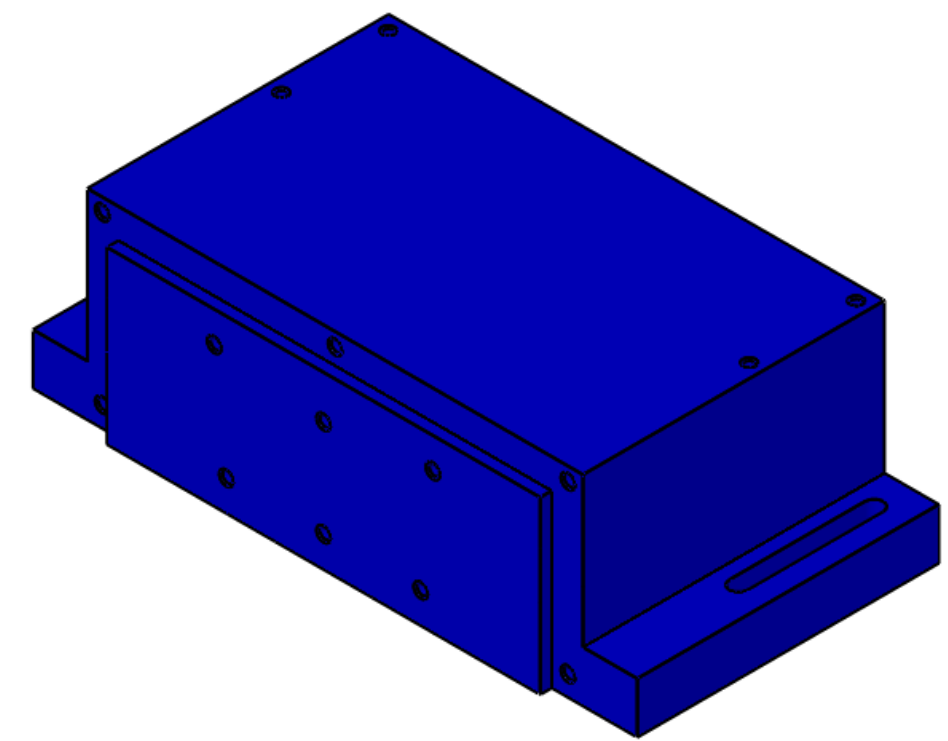
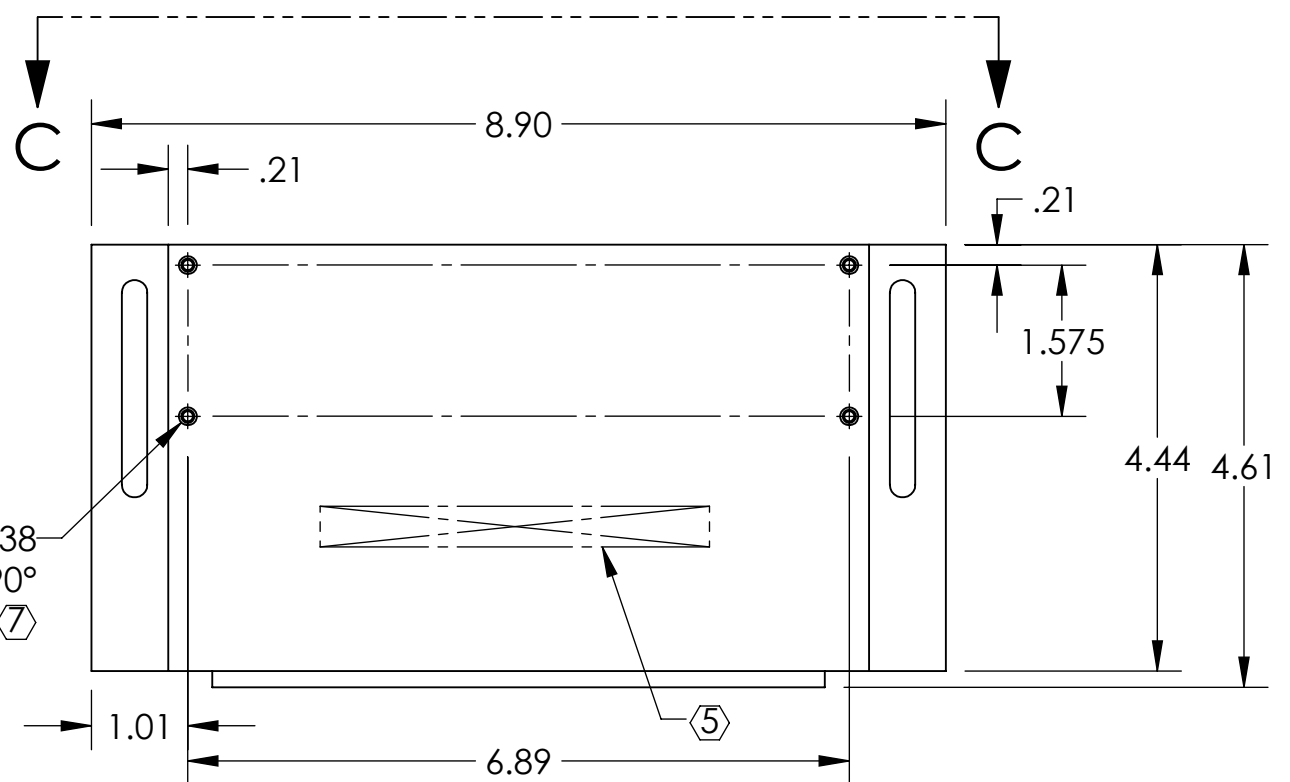


NOTES CONTINUED:
 (5) SCRIBE, ENGRAVE (A VIBRATORY TOOL MAY BE USED), LASER MARK OR MECHANICALLY STAMP (NO INKS OR DYES) DRAWING PART NUMBER, REVISION (AND VARIANT OR TYPE IF APPLICABLE) ON NOTED SURFACE OF PART FOLLOWED ON THE NEXT LINE WITH A THREE DIGIT SERIAL NUMBER. SERIAL NUMBERS START AT 001 FOR THE FIRST ARTICLE AND PROCEED CONSECUTIVELY. USE MINIMUM 0.12" HIGH CHARACTERS, UNLESS THE SIZE OF THE PART DICTATES SMALLER CHARACTERS. EXAMPLE: DXXXXXX-VY, TYPE-XX, S/N XXX

- 6. WEIGHT: 9.69 LB.
- (7) ALL TAPPED HOLES: 0.005 OVERSIZE BOTH DRILL AND TAP.
- (8) TUMBLE DEBURR, CLEAN & BLACK ANODIZE.

REV.	DATE	DCN #	BOM #
v1	20 JUN 2012	-	-
v2	30 JUL 2012	-	-
v3	03 AUG 2012	-	-
v4	21 AUG 2012	-	-



NOTES AND TOLERANCES: (UNLESS OTHERWISE SPECIFIED)

DIMENSIONS ARE IN INCHES

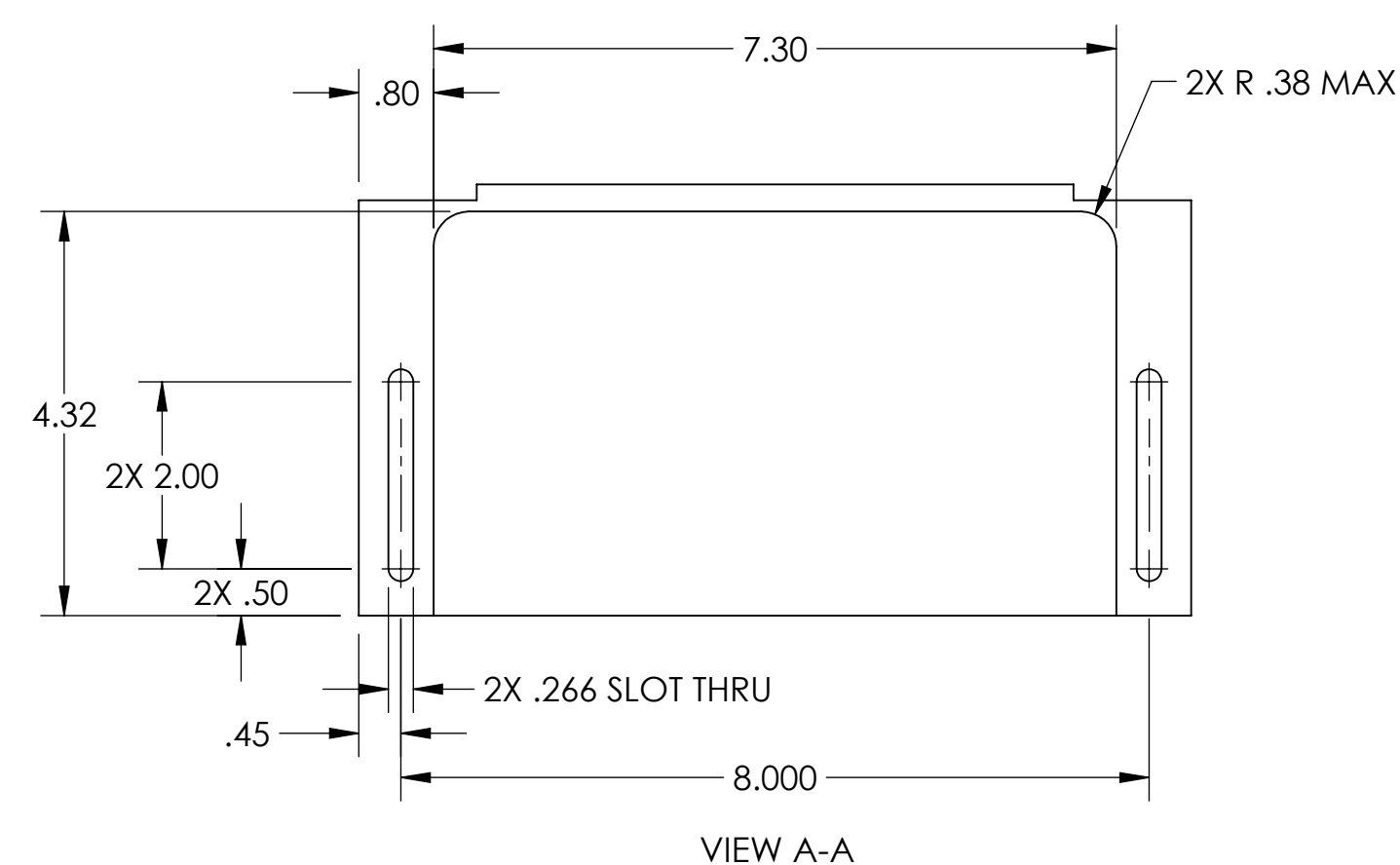
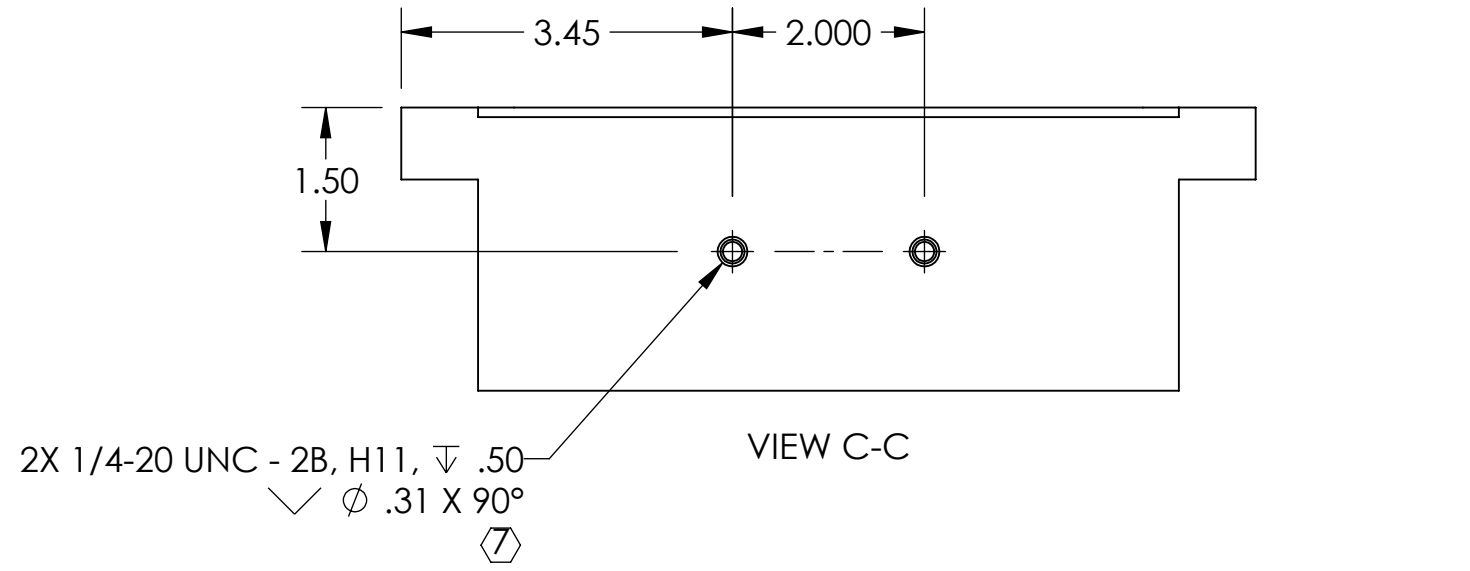
TOLERANCES:
 .XX ± .01
 .XXX ± .005
 ANGULAR ± 0.1°


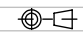
MATERIAL: 6061-T6 Al
 FINISH: 63 μinch (8)

CALIFORNIA INSTITUTE OF TECHNOLOGY MASSACHUSETTS INSTITUTE OF TECHNOLOGY		PART NAME alIGO PHOTON CALIBRATOR LASER MOUNTING BLOCK	
SYSTEM ADVANCED LIGO	SUB-SYSTEM AOS	DESIGNER J. BERLINER 17 APR 2012	SIZE DWG. NO. B D1200681
DRAFTER C. CONLEY 25 JUL 2012	CHECKER APPROVAL	REV. v4	SCALE: NONE PROJECTION:
NEXT ASSY D1201072		SHEET 1 OF 2	

D1200681 alIGO Photon Calibrator Laser Mounting Block, PART PDM REV: X-010, DRAWING PDM REV: X-015

D1200681 aLIGO Photon Calibrator Laser Mounting Block, PART PDM REV: X-010, DRAWING PDM REV: X-015



 CALIFORNIA INSTITUTE OF TECHNOLOGY MASSACHUSETTS INSTITUTE OF TECHNOLOGY	
SIZE B	DWG. NO. D1200681
SCALE: NONE	PROJECTION:  SHEET 2 OF 2
REV. v4	