

8

7

6

5

4

3

2

1

NOTES CONTINUED:

- 5. SCRIBE, ENGRAVE (A VIBRATORY TOOL MAY BE USED), LASER MARK OR MECHANICALLY STAMP (NO INKS OR DYES) DRAWING PART NUMBER, REVISION (AND VARIANT OR "TYPE" IF APPLICABLE) ON NOTED SURFACE OF PART FOLLOWED ON THE NEXT LINE WITH A THREE DIGIT SERIAL NUMBER. SERIAL NUMBERS START AT 001 FOR THE FIRST ARTICLE AND PROCEED CONSECUTIVELY. USE MINIMUM 0.12" HIGH CHARACTERS, UNLESS THE SIZE OF THE PART DICTATES SMALLER CHARACTERS. EXAMPLE: DXXXXXX-VY, TYPE-XX, S/N XXX
- 6. APPROXIMATE WEIGHT = 0.10 LB.
- 7. MACHINE ALL SURFACES TO REMOVE OXIDES AND MILL FINISH, USE OF ABRASIVE REMOVAL TECHNIQUES IS NOT ALLOWED. REFER TO LIGO-E0900364
- 8. ALL PARTS SHALL BE MANUFACTURED IN ACCORDANCE WITH LIGO SPECIFICATION E0900364.
- 9. ALL MATERIAL IS TO BE VIRGIN MATERIAL (i.e. NO WELD REPAIRS, PLUGS OR RECYCLED MATERIAL). NO REPAIRS SHALL BE MADE UNLESS APPROVED IN ADVANCE, AND IN WRITING, BY LIGO LABORATORY. REFER TO LIGO-E0900364.
- 10. SURFACE FINISH TO BE AS-PROCESSED FROM MILL/SUPPLIER, FREE FROM SCRATCHES OR GOUGES.

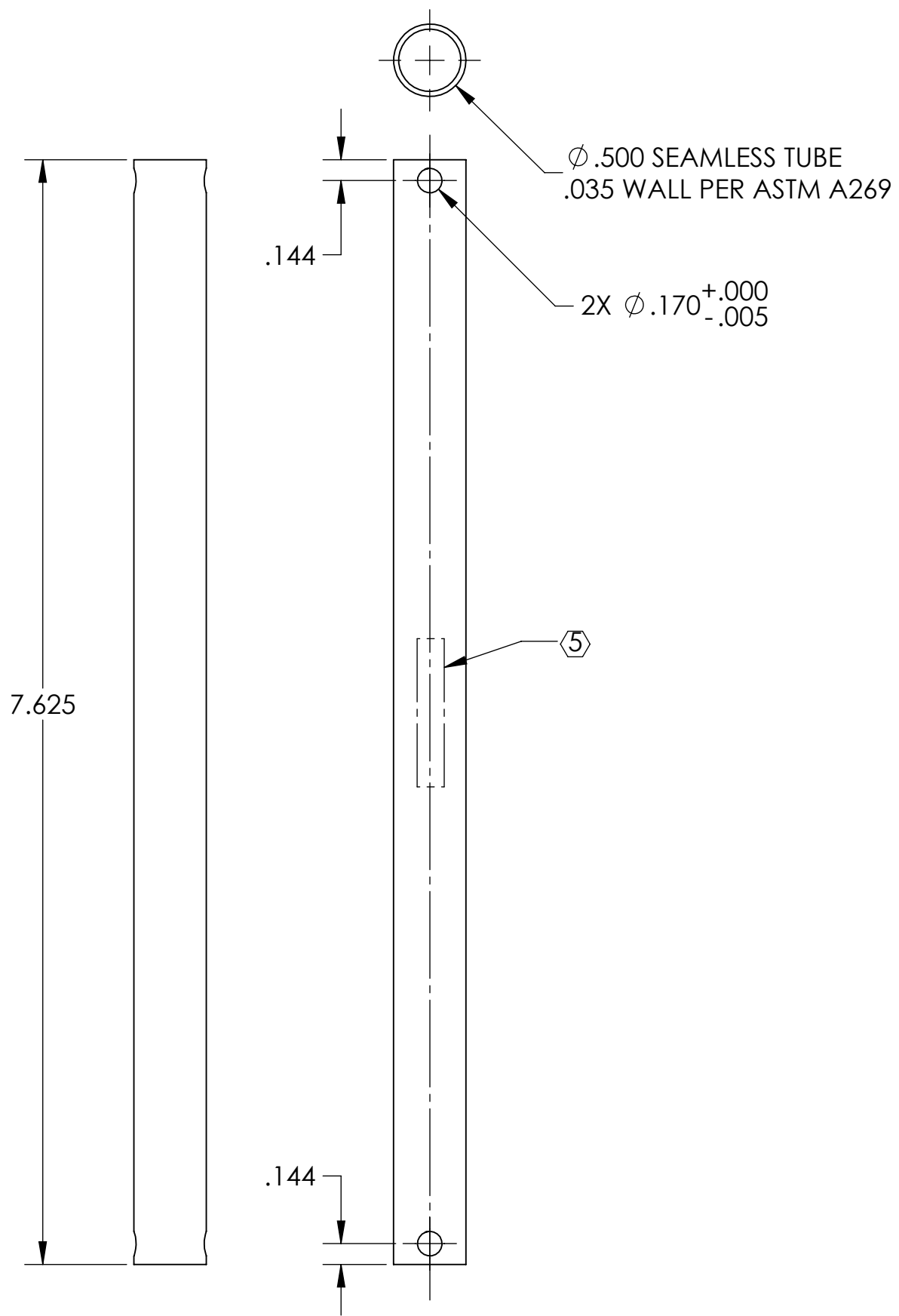
REV.	DATE	DCN #	DRAWING TREE #
v1	21-MAY-12	E1101043-v2	E1101044-v2
-	-	-	-
-	-	-	-

D

C

B

A



D

C

B

A

D1200755-v1_HANDLE, aLIGO TCS STEERING MIRROR 1, H1-L1, PART PDM REV: X-003, DRAWING PDM REV: X-003

8

7

6

5

4

3

2

1

NOTES AND TOLERANCES: (UNLESS OTHERWISE SPECIFIED)

DIMENSIONS ARE IN INCHES	
TOLERANCES: .XX ± .01 .XXX ± .005 ANGULAR ± °	
MATERIAL AISI 316 ANNEALED SS BAR	FINISH 63 μinch

LIGO CALIFORNIA INSTITUTE OF TECHNOLOGY
MASSACHUSETTS INSTITUTE OF TECHNOLOGY

SYSTEM: **ADVANCED LIGO** SUB-SYSTEM: **AOS**

NEXT ASSY: **D1102029**

PART NAME: **HANDLE, aLIGO TCS STEERING MIRROR 1, H1-L1**

DESIGNER	M. JACOBSON	19-MAY-2012	SIZE	DWG. NO.	REV.
DRAFTER	M. JACOBSON	21 MAY 2012	B	D1200755	v1
CHECKER	A. COLE	21 MAY 2012	SCALE: 1:1	PROJECTION:	SHEET 1 OF 1
APPROVAL	T. VO	22 MAY 2012			