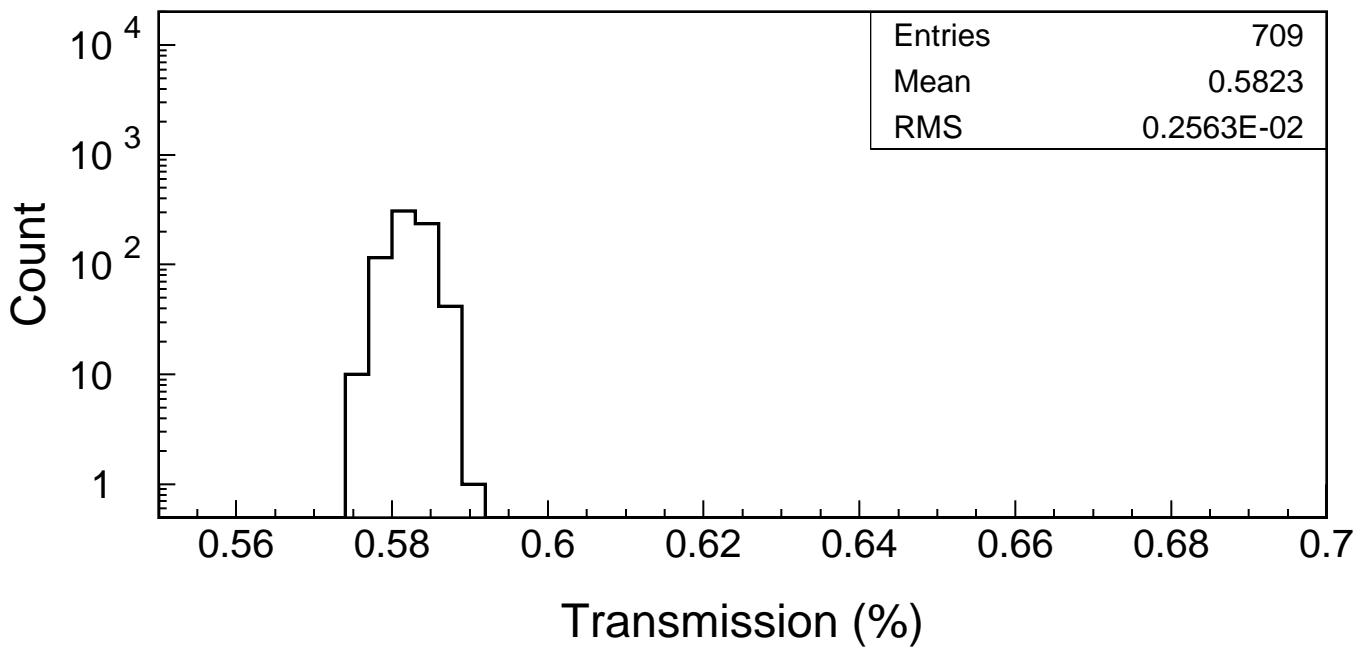
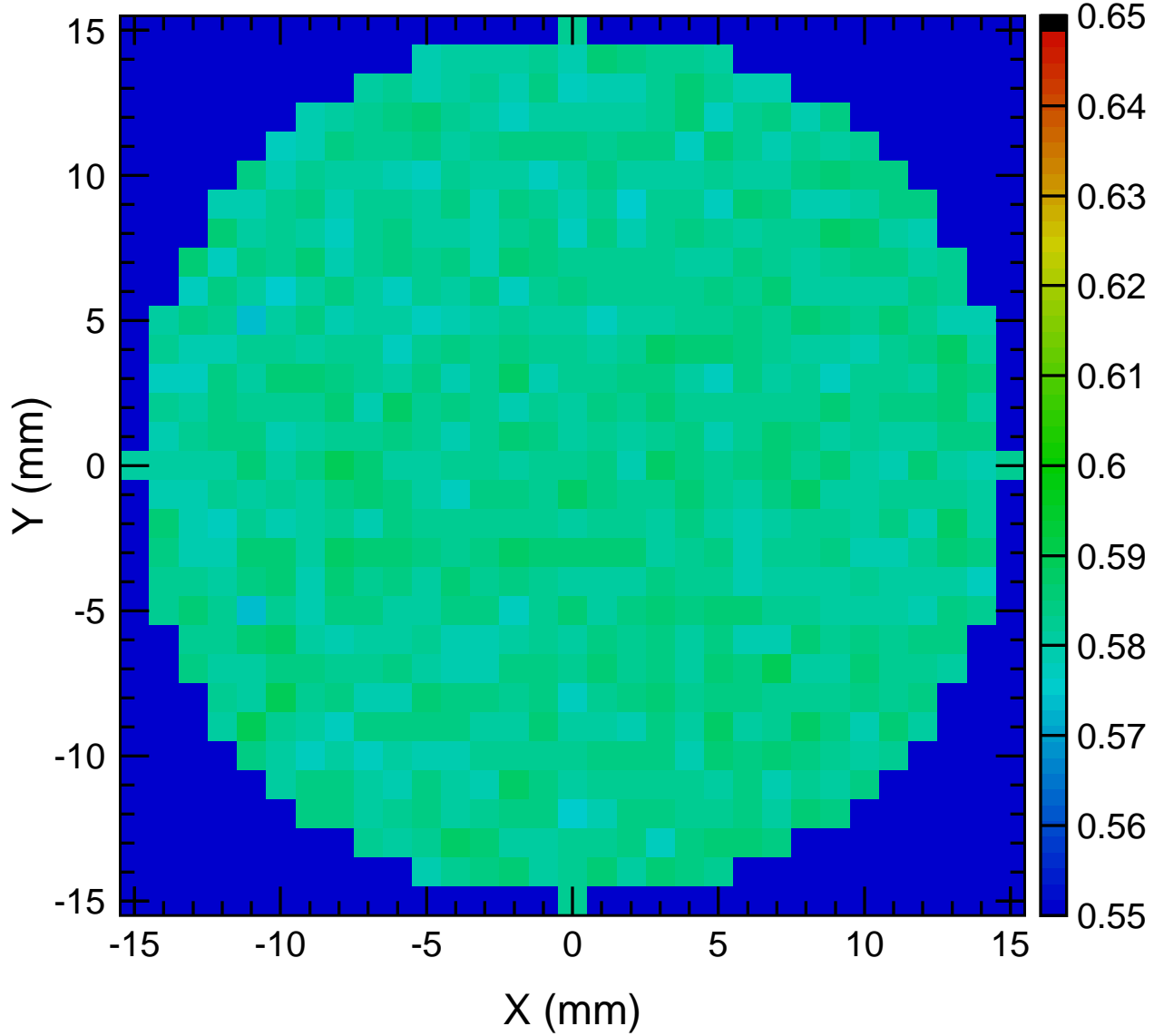
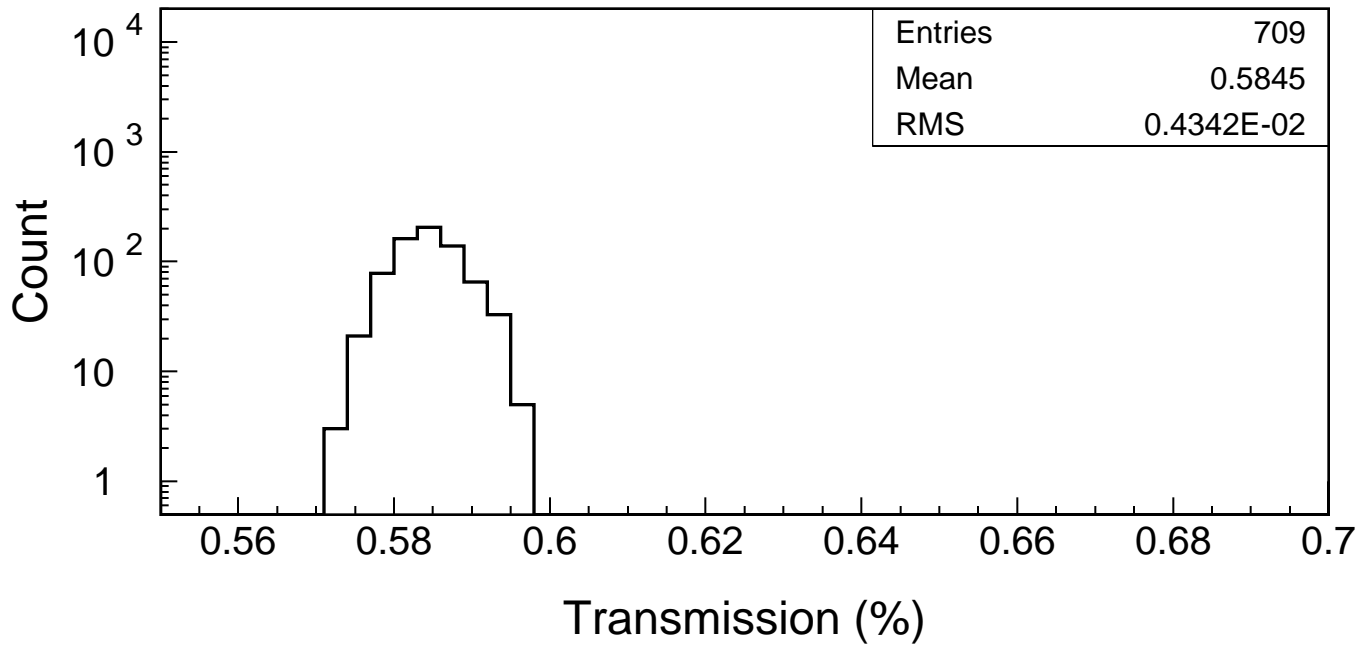
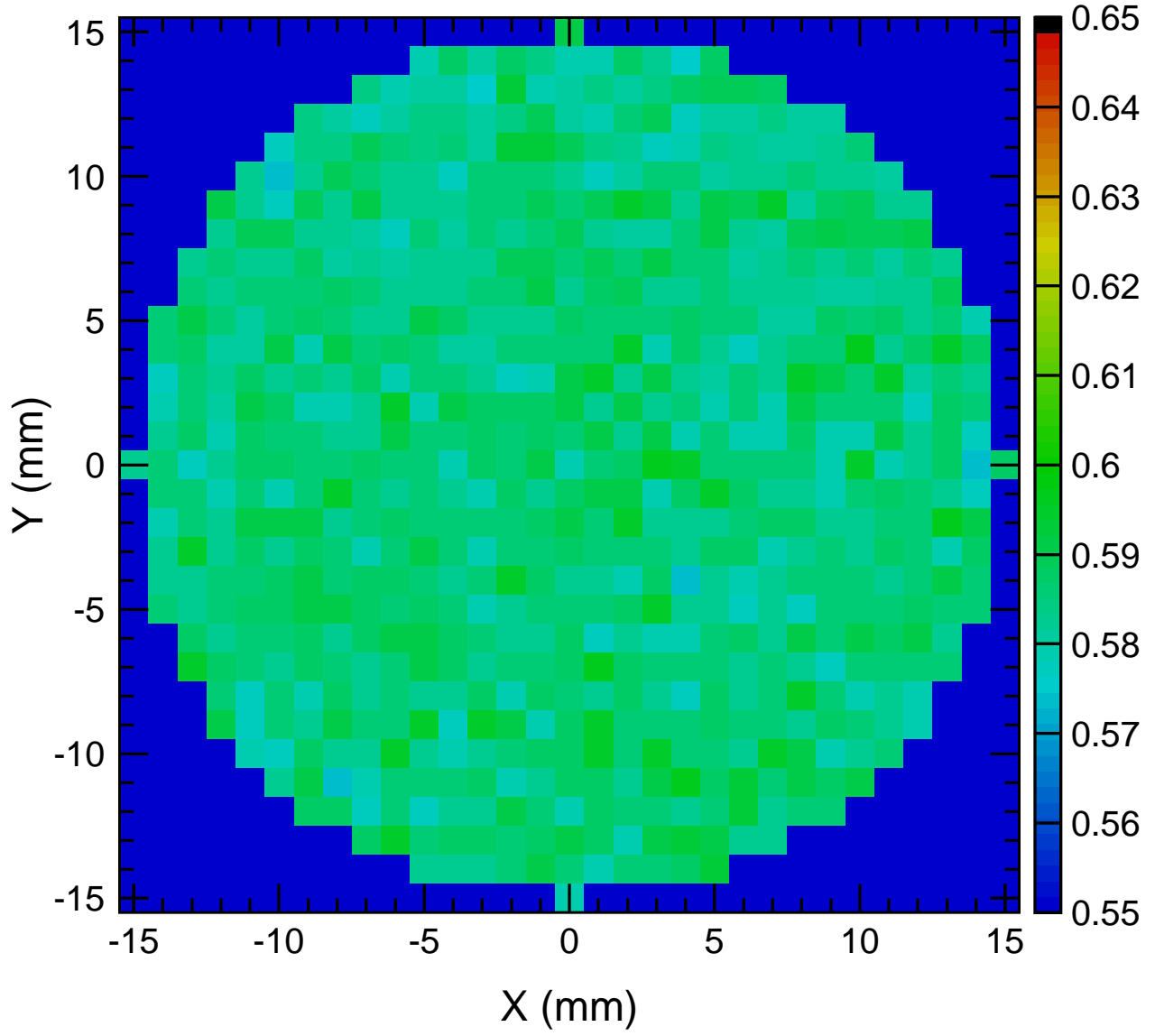


LIGO-E1200514-v1

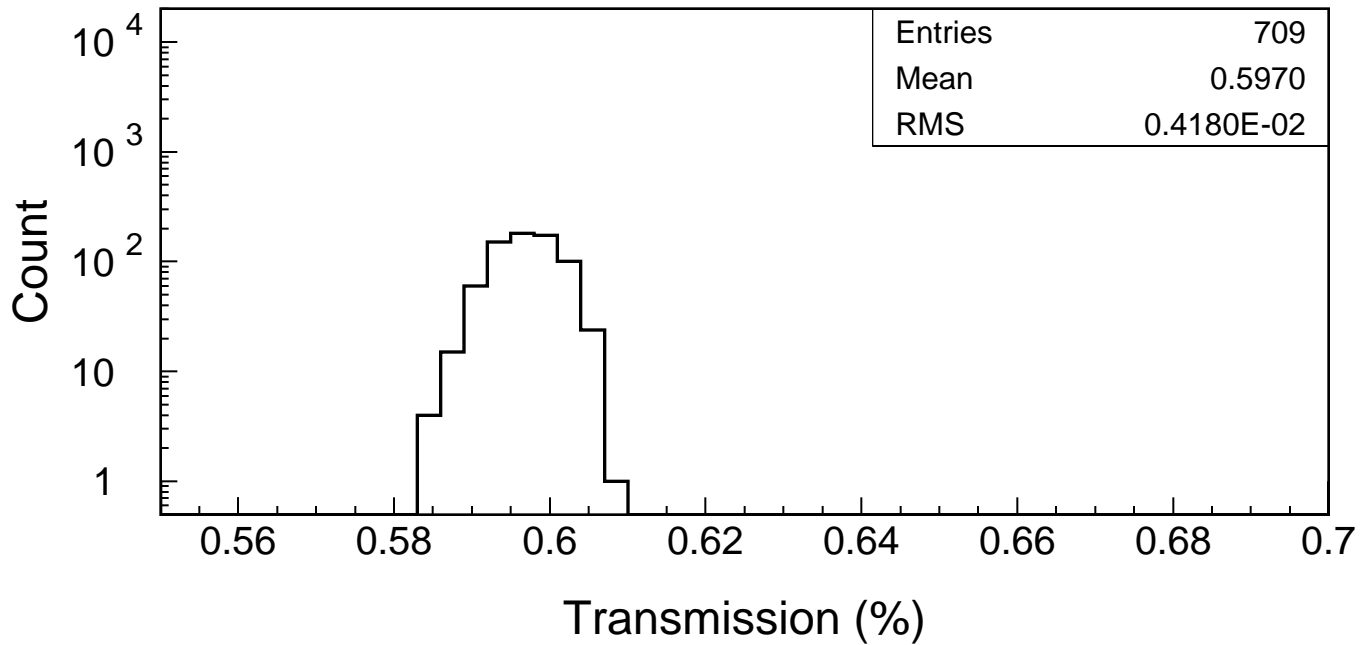
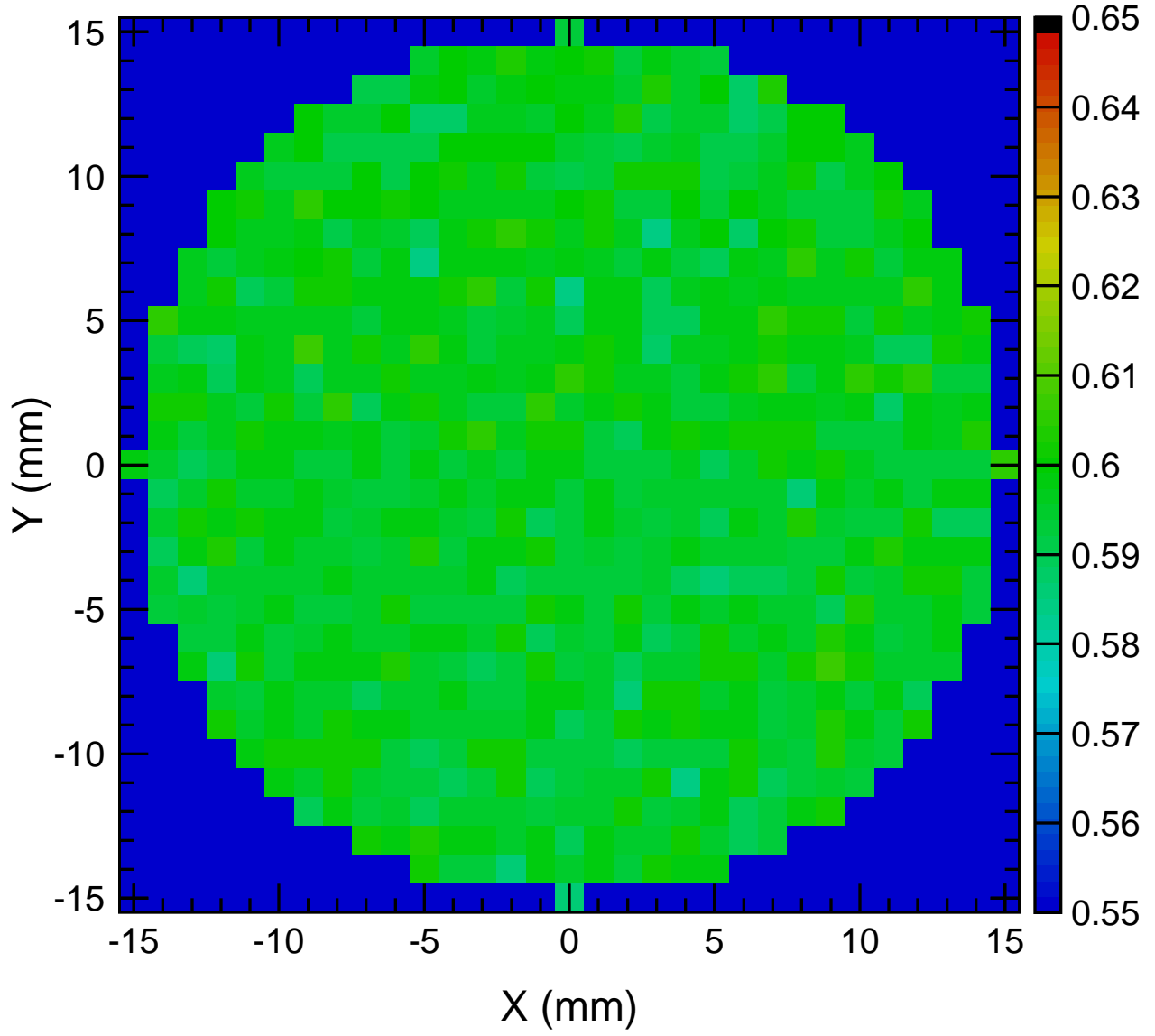
IMCF05 Transmission ($\lambda=1064$ nm, $\theta_i=45^\circ$, S pol, $\phi_{\text{beam}}=1$ mm, Step=1mm) (%)



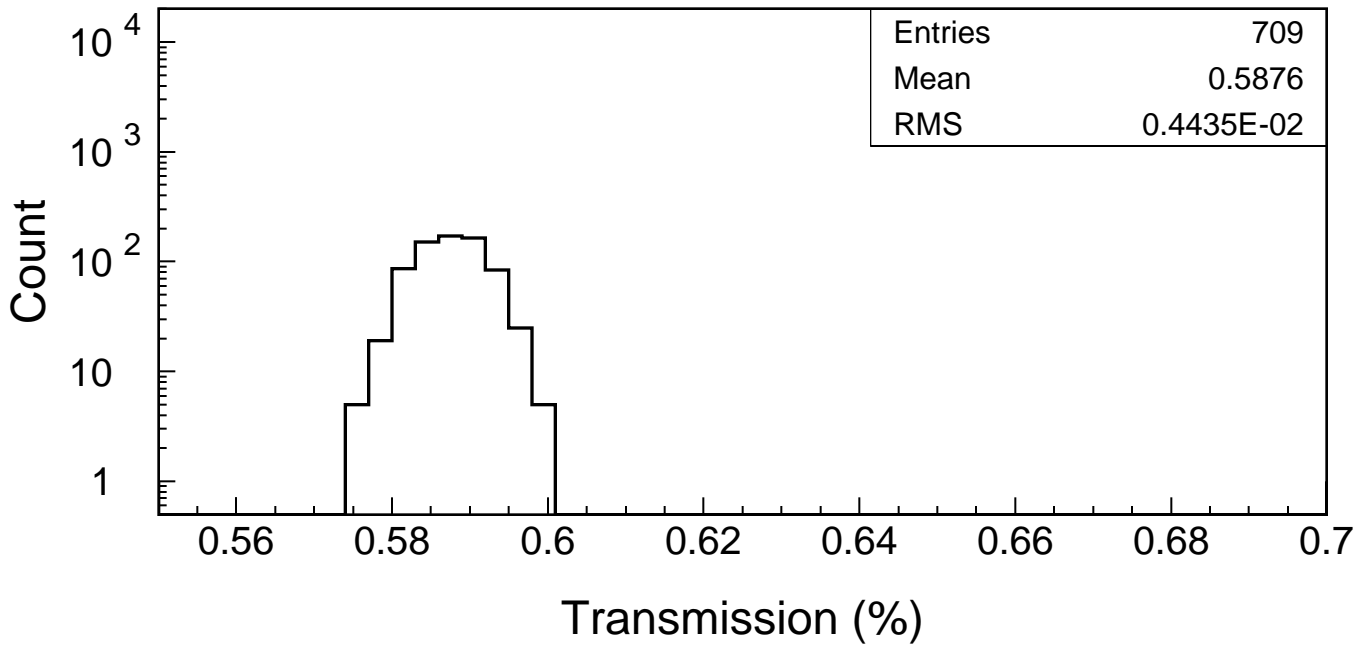
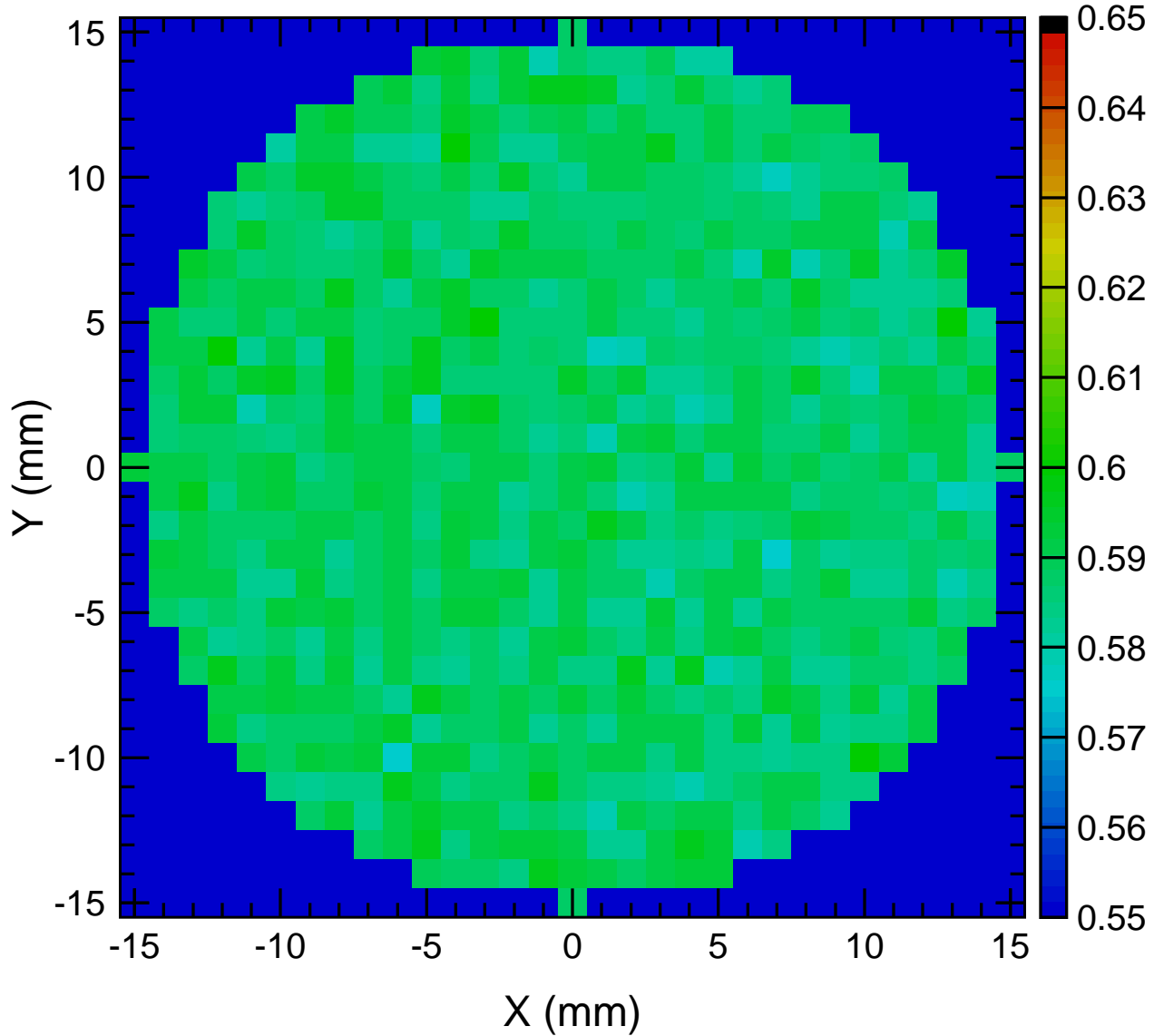
IMCF06 Transmission ($\lambda=1064$ nm, $\theta_i=45^\circ$, S pol, $\phi_{\text{beam}}=1$ mm, Step=1mm) (%)



IMCF07 Transmission ($\lambda=1064$ nm, $\theta_i=45^\circ$, S pol, $\phi_{\text{beam}}=1\text{mm}$, Step=1mm) (%)



IMCF08 Transmission ($\lambda=1064$ nm, $\theta_i=45^\circ$, S pol, $\phi_{\text{beam}}=1$ mm, Step=1mm) (%)



IMCF09 Transmission ($\lambda=1064$ nm, $\theta_i=45^\circ$, S pol, $\phi_{\text{beam}}=1$ mm, Step=1mm) (%)

