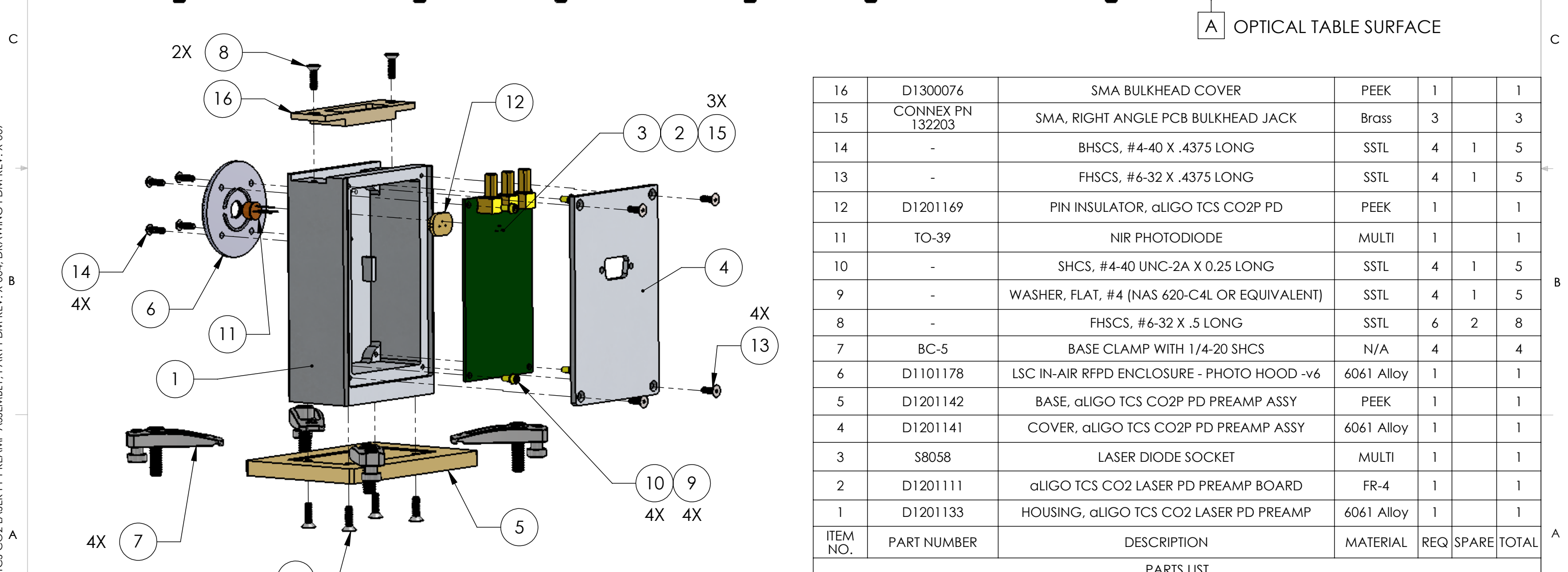
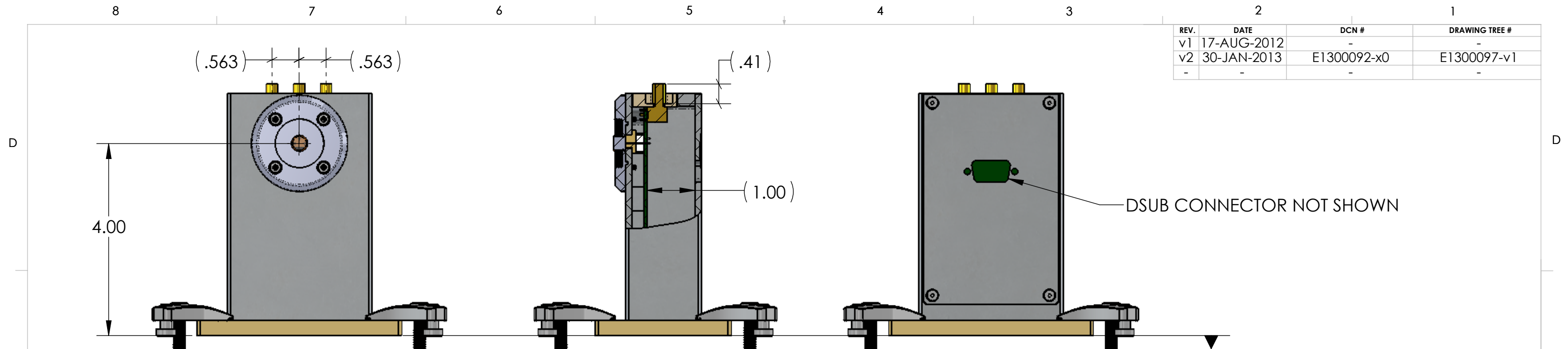


D1201065_αLIGO TCS CO2 LASER PD PREAMP ASSEMBLY, PART PDM REV: X-004, DRAWING PDM REV: X-007

REV.	DATE	DCN #	DRAWING TREE #
v1	17-AUG-2012	-	-
v2	30-JAN-2013	E1300092-x0	E1300097-v1
-	-	-	-



ITEM NO.	PART NUMBER	DESCRIPTION	MATERIAL	REQ	SPARE	TOTAL
16	D1300076	SMA BULKHEAD COVER	PEEK	1		1
15	CONNEX PN 132203	SMA, RIGHT ANGLE PCB BULKHEAD JACK	Brass	3		3
14	-	BHSCS, #4-40 X .4375 LONG	SSTL	4	1	5
13	-	FHSCS, #6-32 X .4375 LONG	SSTL	4	1	5
12	D1201169	PIN INSULATOR, αLIGO TCS CO2P PD	PEEK	1		1
11	TO-39	NIR PHOTODIODE	MULTI	1		1
10	-	SHCS, #4-40 UNC-2A X 0.25 LONG	SSTL	4	1	5
9	-	WASHER, FLAT, #4 (NAS 620-C4L OR EQUIVALENT)	SSTL	4	1	5
8	-	FHSCS, #6-32 X .5 LONG	SSTL	6	2	8
7	BC-5	BASE CLAMP WITH 1/4-20 SHCS	N/A	4		4
6	D1101178	LSC IN-AIR RFPD ENCLOSURE - PHOTO HOOD -v6	6061 Alloy	1		1
5	D1201142	BASE, αLIGO TCS CO2P PD PREAMP ASSY	PEEK	1		1
4	D1201141	COVER, αLIGO TCS CO2P PD PREAMP ASSY	6061 Alloy	1		1
3	S8058	LASER DIODE SOCKET	MULTI	1		1
2	D1201111	αLIGO TCS CO2 LASER PD PREAMP BOARD	FR-4	1		1
1	D1201133	HOUSING, αLIGO TCS CO2 LASER PD PREAMP	6061 Alloy	1		1

NOTES AND TOLERANCES: (UNLESS OTHERWISE SPECIFIED)

DIMENSIONS ARE IN INCHES

TOLERANCES:
 .XX ±
 .XXX ±
 ANGULAR ± °

1. INTERPRET DRAWING PER ASME Y14.5-1994.
 2. REMOVE ALL SHARP EDGES, .005-.015, FOR MACHINED PARTS. ROUND ALL EDGES APPROXIMATELY R.02 FOR SHEET METAL PARTS.
 3. DO NOT SCALE FROM DRAWING.
 4. ALL MACHINING FLUIDS MUST BE FULLY SYNTHETIC, FULLY WATER SOLUBLE AND FREE OF SULFUR, SILICONE, AND CHLORINE.

MATERIAL N/A **FINISH** N/A μinch

SYSTEM ADVANCED LIGO **SUB-SYSTEM** AOS **PART NAME** αLIGO TCS CO2 LASER PD PREAMP ASSEMBLY

DESIGNER M. JACOBSON 08-AUG-12 **SIZE** DWG. NO. B **REV.** v2
DRAFTER M. JACOBSON 15-AUG-2012
CHECKER B. ABBOTT 30-JAN-2013
APPROVAL HEPTONSTALL 29-JAN-2013

SCALE: 1:4 **PROJECTION:** **SHEET 1 OF 1**