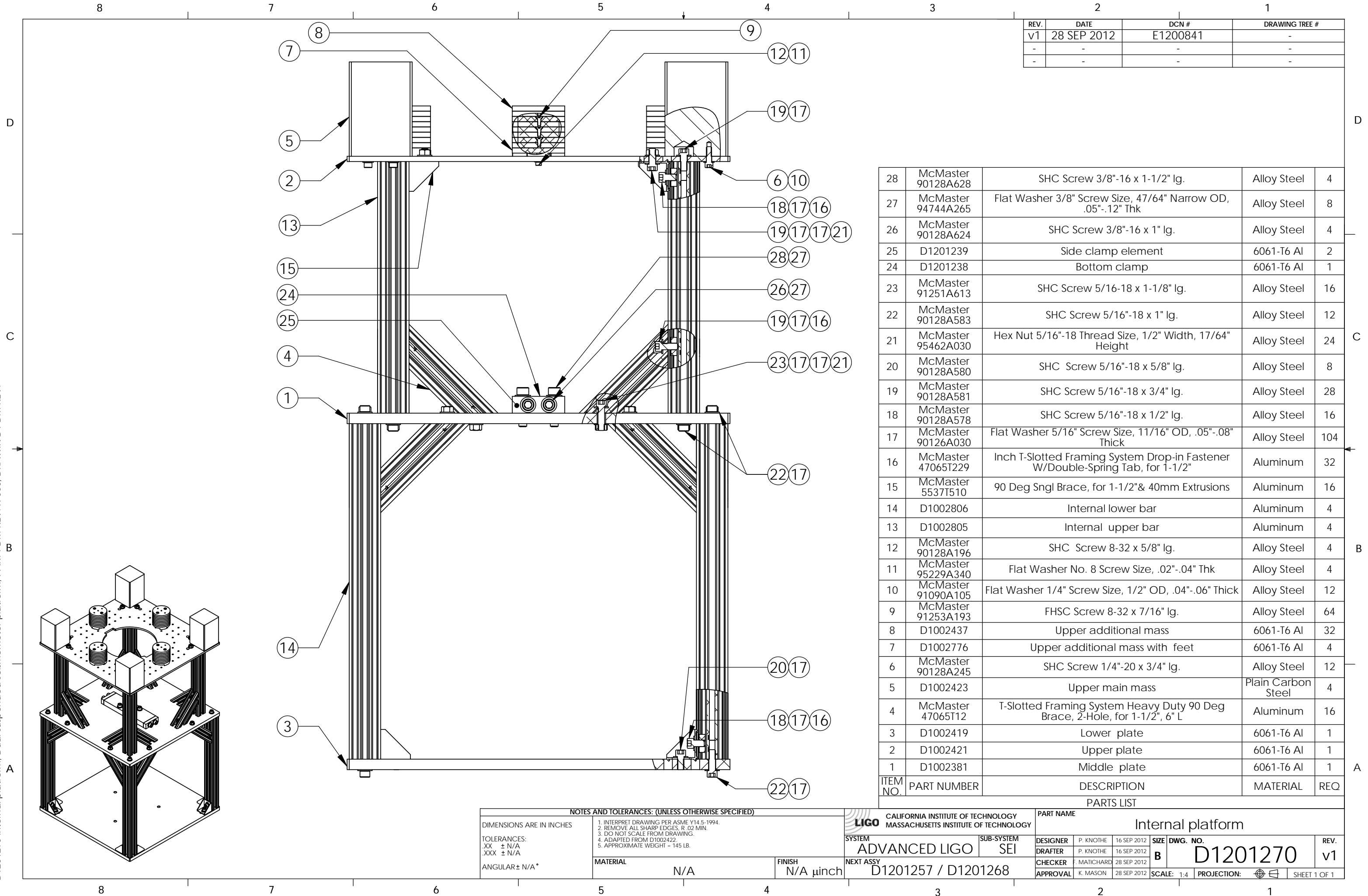


D1201270 Internal platform, Dual suspended seismometer platform, PART PDM REV: X-000, DRAWING PDM REV:



REV.	DATE	DCN #	DRAWING TREE #
v1	28 SEP 2012	E1200841	-
-	-	-	-
-	-	-	-

28	McMaster 90128A628	SHC Screw 3/8"-16 x 1-1/2" lg.	Alloy Steel	4
27	McMaster 94744A265	Flat Washer 3/8" Screw Size, 47/64" Narrow OD, .05"-.12" Thk	Alloy Steel	8
26	McMaster 90128A624	SHC Screw 3/8"-16 x 1" lg.	Alloy Steel	4
25	D1201239	Side clamp element	6061-T6 Al	2
24	D1201238	Bottom clamp	6061-T6 Al	1
23	McMaster 91251A613	SHC Screw 5/16"-18 x 1-1/8" lg.	Alloy Steel	16
22	McMaster 90128A583	SHC Screw 5/16"-18 x 1" lg.	Alloy Steel	12
21	McMaster 95462A030	Hex Nut 5/16"-18 Thread Size, 1/2" Width, 17/64" Height	Alloy Steel	24
20	McMaster 90128A580	SHC Screw 5/16"-18 x 5/8" lg.	Alloy Steel	8
19	McMaster 90128A581	SHC Screw 5/16"-18 x 3/4" lg.	Alloy Steel	28
18	McMaster 90128A578	SHC Screw 5/16"-18 x 1/2" lg.	Alloy Steel	16
17	McMaster 90126A030	Flat Washer 5/16" Screw Size, 11/16" OD, .05"-.08" Thick	Alloy Steel	104
16	McMaster 47065T229	Inch T-Slotted Framing System Drop-in Fastener W/Double-Spring Tab, for 1-1/2"	Aluminum	32
15	McMaster 5537T510	90 Deg Sngl Brace, for 1-1/2" & 40mm Extrusions	Aluminum	16
14	D1002806	Internal lower bar	Aluminum	4
13	D1002805	Internal upper bar	Aluminum	4
12	McMaster 90128A196	SHC Screw 8-32 x 5/8" lg.	Alloy Steel	4
11	McMaster 95229A340	Flat Washer No. 8 Screw Size, .02"-.04" Thk	Alloy Steel	4
10	McMaster 91090A105	Flat Washer 1/4" Screw Size, 1/2" OD, .04"-.06" Thick	Alloy Steel	12
9	McMaster 91253A193	FHSC Screw 8-32 x 7/16" lg.	Alloy Steel	64
8	D1002437	Upper additional mass	6061-T6 Al	32
7	D1002776	Upper additional mass with feet	6061-T6 Al	4
6	McMaster 90128A245	SHC Screw 1/4"-20 x 3/4" lg.	Alloy Steel	12
5	D1002423	Upper main mass	Plain Carbon Steel	4
4	McMaster 47065T12	T-Slotted Framing System Heavy Duty 90 Deg Brace, 2-Hole, for 1-1/2", 6" L	Aluminum	16
3	D1002419	Lower plate	6061-T6 Al	1
2	D1002421	Upper plate	6061-T6 Al	1
1	D1002381	Middle plate	6061-T6 Al	1
ITEM NO.	PART NUMBER	DESCRIPTION	MATERIAL	REQ

NOTES AND TOLERANCES: (UNLESS OTHERWISE SPECIFIED)

DIMENSIONS ARE IN INCHES
 TOLERANCES:
 .XX ± N/A
 .XXX ± N/A
 ANGULAR ± N/A*

1. INTERPRET DRAWING PER ASME Y14.5-1994.
 2. REMOVE ALL SHARP EDGES, R.02 MIN.
 3. DO NOT SCALE FROM DRAWING.
 4. ADAPTED FROM D1002422.
 5. APPROXIMATE WEIGHT = 145 LB.

LIGO CALIFORNIA INSTITUTE OF TECHNOLOGY
 MASSACHUSETTS INSTITUTE OF TECHNOLOGY

ADVANCED LIGO SUB-SYSTEM **SEI**

INTERNAL PLATFORM

DESIGNER: P. KNOEHE 16 SEP 2012
 DRAFTER: P. KNOEHE 16 SEP 2012
 CHECKER: MATICHARD 28 SEP 2012
 APPROVAL: K. MASON 28 SEP 2012

SIZE: **B** DWG. NO. **D1201270** REV. **v1**

MATERIAL: N/A FINISH: N/A μinch NEXT ASSY: D1201257 / D1201268

SCALE: 1:4 PROJECTION: SHEET 1 OF 1