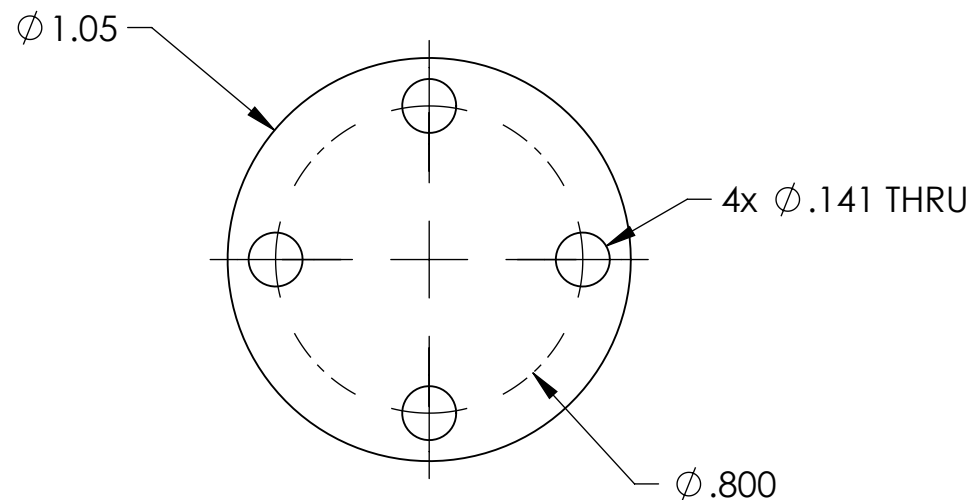
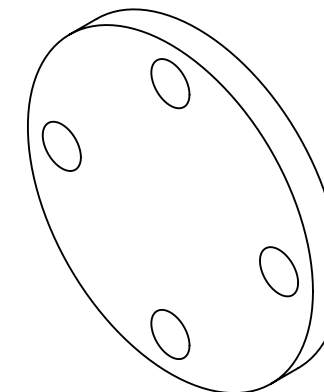
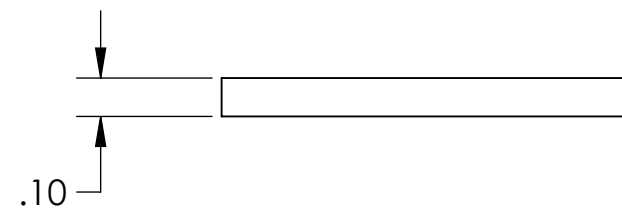


NOTES CONTINUED:

- 5. BAG AND TAG WITH PART AND SERIAL NUMBERS.
- 6. APPROXIMATE WEIGHT = 2.50 g.
- 7. MACHINE ALL SURFACES TO REMOVE OXIDES AND MILL FINISH, USE OF ABRASIVE REMOVAL TECHNIQUES IS NOT ALLOWED.
- 8. ALL PARTS SHALL BE MANUFACTURED IN ACCORDANCE WITH LIGO SPECIFICATION E0900364.
- 9. THIS PART IS INTENDED TO BE USED DURING THE COATING PROCESS OF D1201280 QPD HOUSING.

REV.	DATE	DCN #	DRAWING TREE #
v1	9 NOV 2012	E1200997-x0	-
-	-	-	-
-	-	-	-



D1201283 OMC QPD MASK, FLAME SPRAY, PART PDM REV: , DRAWING PDM REV:

D C B A

D C B A

NOTES AND TOLERANCES: (UNLESS OTHERWISE SPECIFIED)				LIGO CALIFORNIA INSTITUTE OF TECHNOLOGY MASSACHUSETTS INSTITUTE OF TECHNOLOGY		PART NAME	
DIMENSIONS ARE IN		1. INTERPRET DRAWING PER ASME Y14.5-1994. 2. REMOVE ALL SHARP EDGES, .005-.015. 3. DO NOT SCALE FROM DRAWING. 4. ALL MACHINING FLUIDS MUST BE FULLY SYNTHETIC, FULLY WATER SOLUBLE AND FREE OF SULFUR, SILICONE, AND CHLORINE.		SYSTEM		SUB-SYSTEM	
TOLERANCES: .XX $\pm .01$.XXX $\pm .005$		MATERIAL		ADVANCED LIGO		ISC	
ANGULAR $\pm 1^\circ$		6061-T6		NEXT ASSY		NA	
		FINISH				DESIGNER	
		63 μ inch				J.LEWIS 08 NOV 2012	
						DRAFTER	
						J.LEWIS 08 NOV 2012	
						CHECKER	
						APPROVAL	
						SCALE: 4:1	
						PROJECTION:	
						SIZE DWG. NO.	
						B D1201283	
						REV.	
						v1	
						SHEET 1 OF 1	