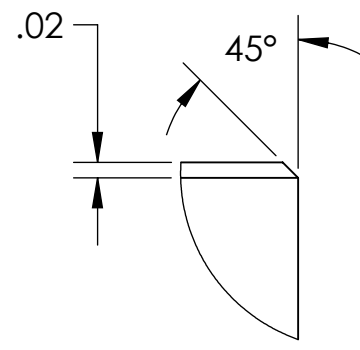
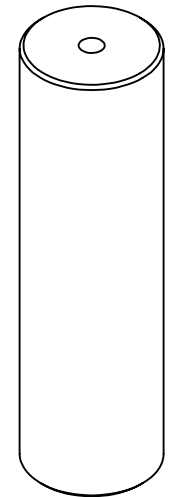
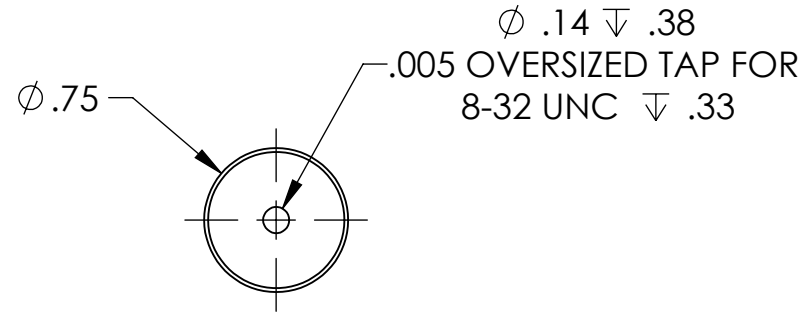


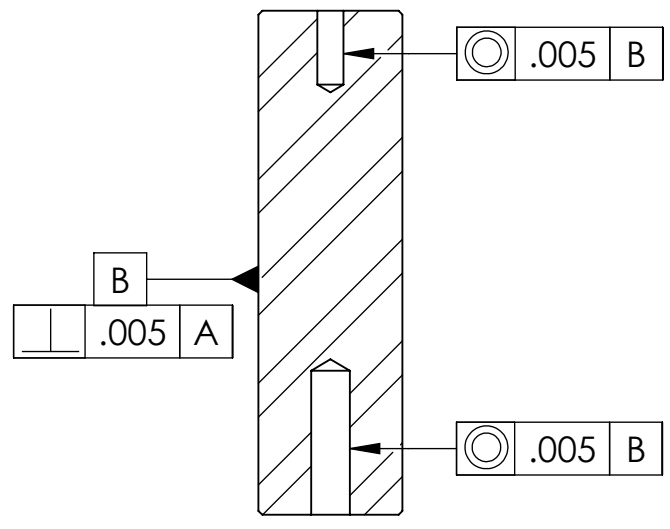
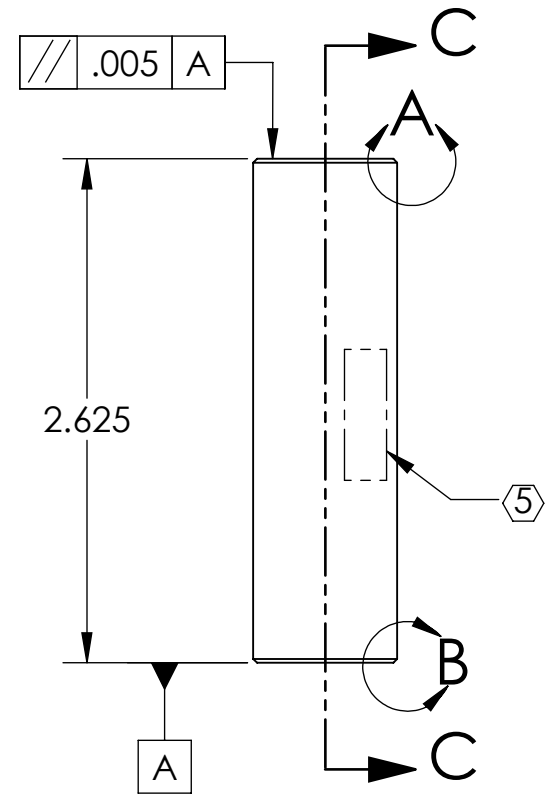
NOTES CONTINUED:
 5. SCRIBE, ENGRAVE (A VIBRATORY TOOL MAY BE USED), LASER MARK OR MECHANICALLY STAMP (NO INKS OR DYES) DRAWING PART NUMBER, REVISION (AND VARIANT OR "TYPE" IF APPLICABLE) ON NOTED SURFACE OF PART FOLLOWED ON THE NEXT LINE WITH A THREE DIGIT SERIAL NUMBER. SERIAL NUMBERS START AT 001 FOR THE FIRST ARTICLE AND PROCEED CONSECUTIVELY. USE MINIMUM 0.12" HIGH CHARACTERS, UNLESS THE SIZE OF THE PART DICTATES SMALLER CHARACTERS. EXAMPLE: DXXXXXX-VY, TYPE-XX, S/N XXX

REV.	DATE	DCN #	DRAWING TREE #
v1	29-NOV-2012	E1201070-x0	E1201071-v1
v2	13-DEC-2012	E1201070-x0	E1201071-v1
-	-	-	-

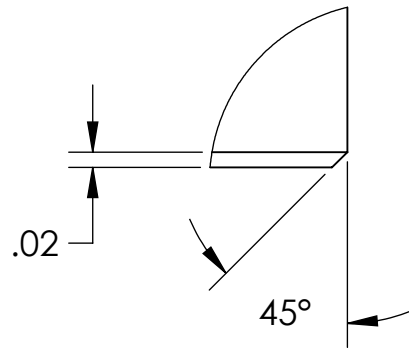
- 6. APPROXIMATE WEIGHT = 0.326 LB.
- 7. ALL PARTS SHALL BE MANUFACTURED IN ACCORDANCE WITH LIGO SPECIFICATION E0900364.
- 8. ALL MATERIAL IS TO BE VIRGIN MATERIAL (i.e. NO WELD REPAIRS, PLUGS OR RECYCLED MATERIAL). NO REPAIRS SHALL BE MADE UNLESS APPROVED IN ADVANCE, AND IN WRITING, BY LIGO LABORATORY. REFER TO LIGO-E0900364.



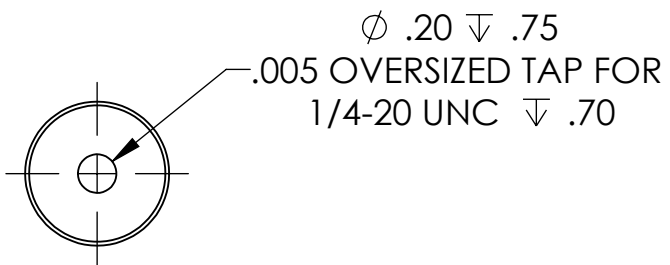
DETAIL A
 SCALE 4 : 1



SECTION C-C



DETAIL B
 SCALE 4 : 1



D1201503_CUSTOM POST, PART PDM REV: X-001, DRAWING PDM REV: X-003

NOTES AND TOLERANCES: (UNLESS OTHERWISE SPECIFIED)				LIGO CALIFORNIA INSTITUTE OF TECHNOLOGY MASSACHUSETTS INSTITUTE OF TECHNOLOGY		PART NAME	
DIMENSIONS ARE IN INCHES				ADVANCED LIGO		CUSTOM POST	
TOLERANCES: .XX ± .01 .XXX ± .005				SUB-SYSTEM AOS		DESIGNER M. JACOBSON 27-NOV-2012	
ANGULAR ± °				NEXT ASSY T1200007		DRAFTER M. JACOBSON 29-NOV-2012	
MATERIAL AISI 304				FINISH 63 μinch		CHECKER J. LEWIS 29-NOV-2012	
						APPROVAL A. BROOKS 29-NOV-2012	
						SIZE DWG. NO. B D1201503	
						REV. v2	
						SCALE: 1:1 PROJECTION: SHEET 1 OF 1	