

8

7

6

5

4

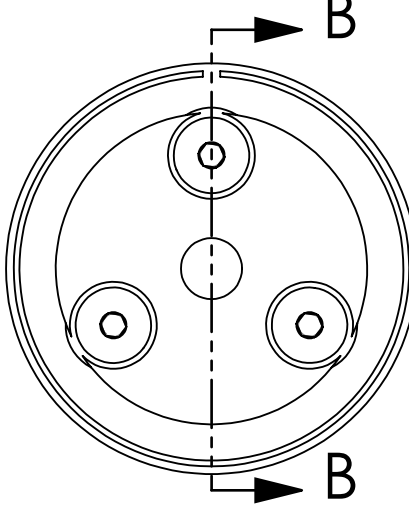
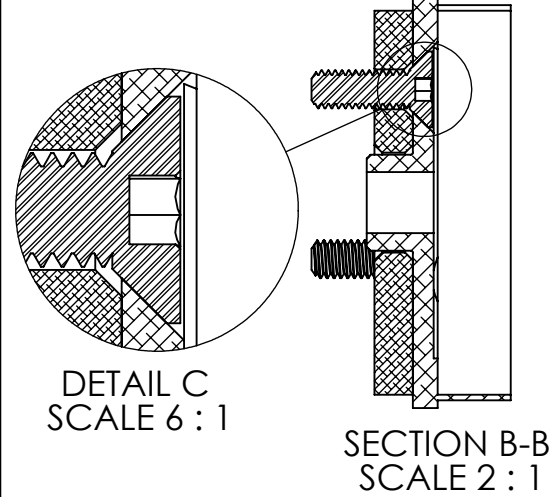
3

2

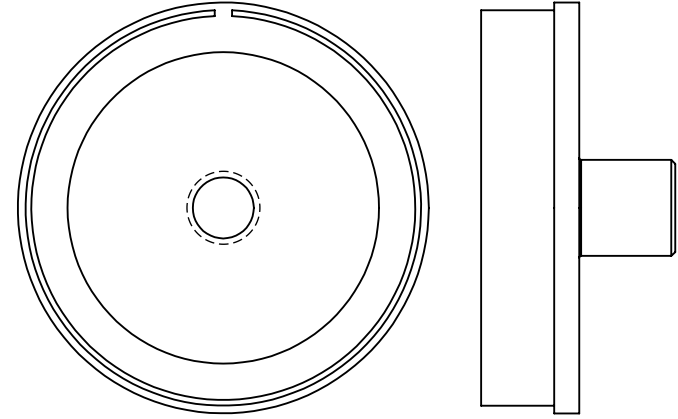
1

NOTES CONTINUED:
 Ⓢ SCRIBE, ENGRAVE (A VIBRATORY TOOL MAY BE USED), LASER MARK OR MECHANICALLY STAMP (NO INKS OR DYES) DRAWING PART NUMBER, REVISION (AND VARIANT OR "TYPE" IF APPLICABLE) ON NOTED SURFACE OF PART FOLLOWED ON THE NEXT LINE WITH A THREE DIGIT SERIAL NUMBER. SERIAL NUMBERS START AT 001 FOR THE FIRST ARTICLE AND PROCEED CONSECUTIVELY. USE MINIMUM 0.12" HIGH CHARACTERS, UNLESS THE SIZE OF THE PART DICTATES SMALLER CHARACTERS. EXAMPLE: DXXXXXX-VY, TYPE-XX, S/N XXX

SHOWN IN ASSEMBLY WITH ADAPTER PLATE D1300117 AND M2.5 SCREWS
 FOR REFERENCE



ORIGINAL NEWPORT UPA1
 FOR REFERENCE



| REV. | DATE | DCN # | DRAWING TREE # |
|------|-----------|----------|----------------|
| V1 | 2/12/2013 | E1300118 | - |
| - | - | - | - |
| - | - | - | - |

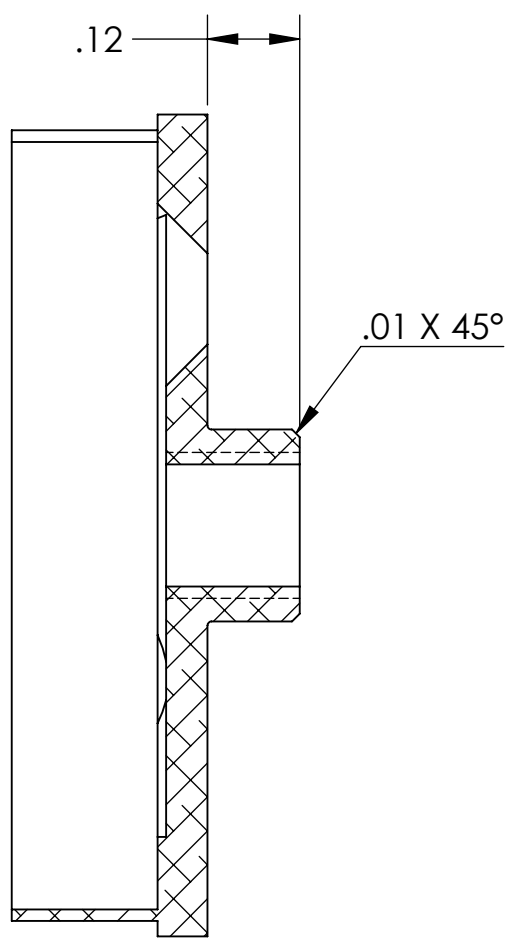
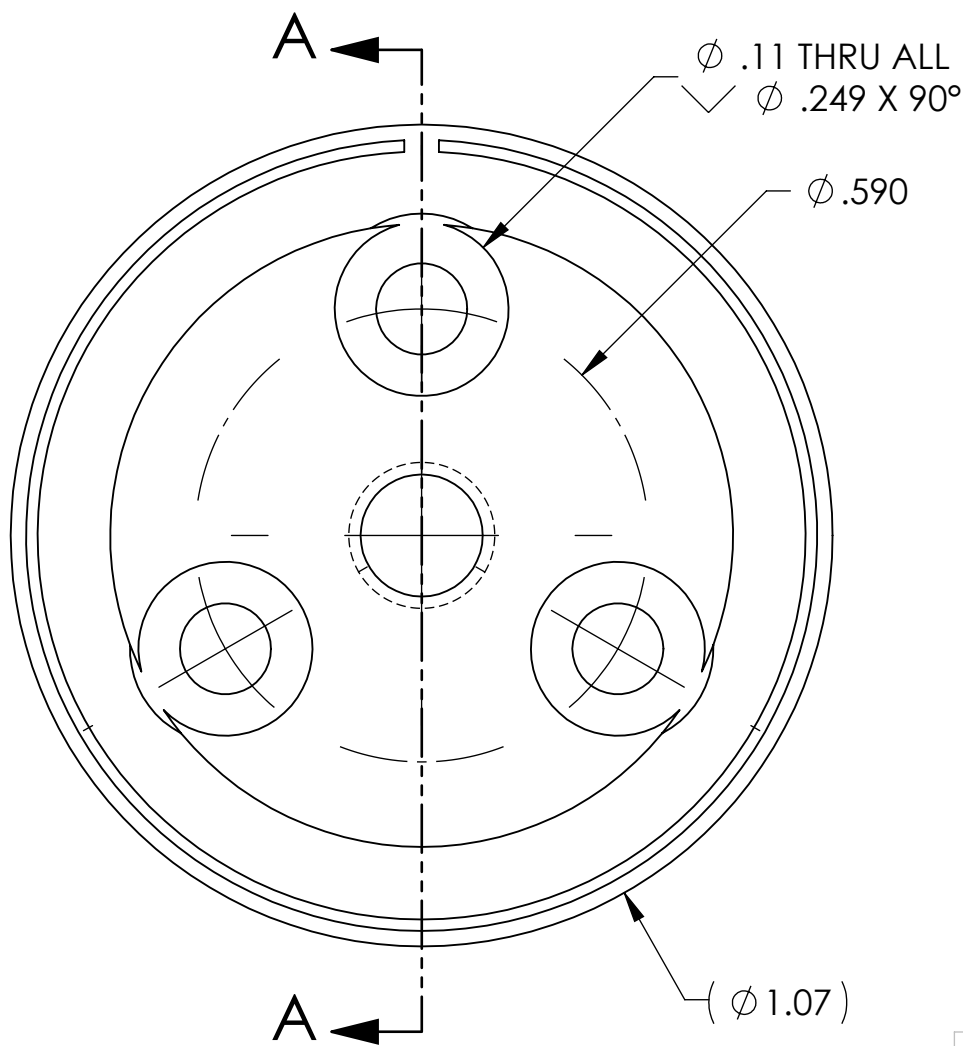
D

6. APPROXIMATE WEIGHT = X.XXX LB.

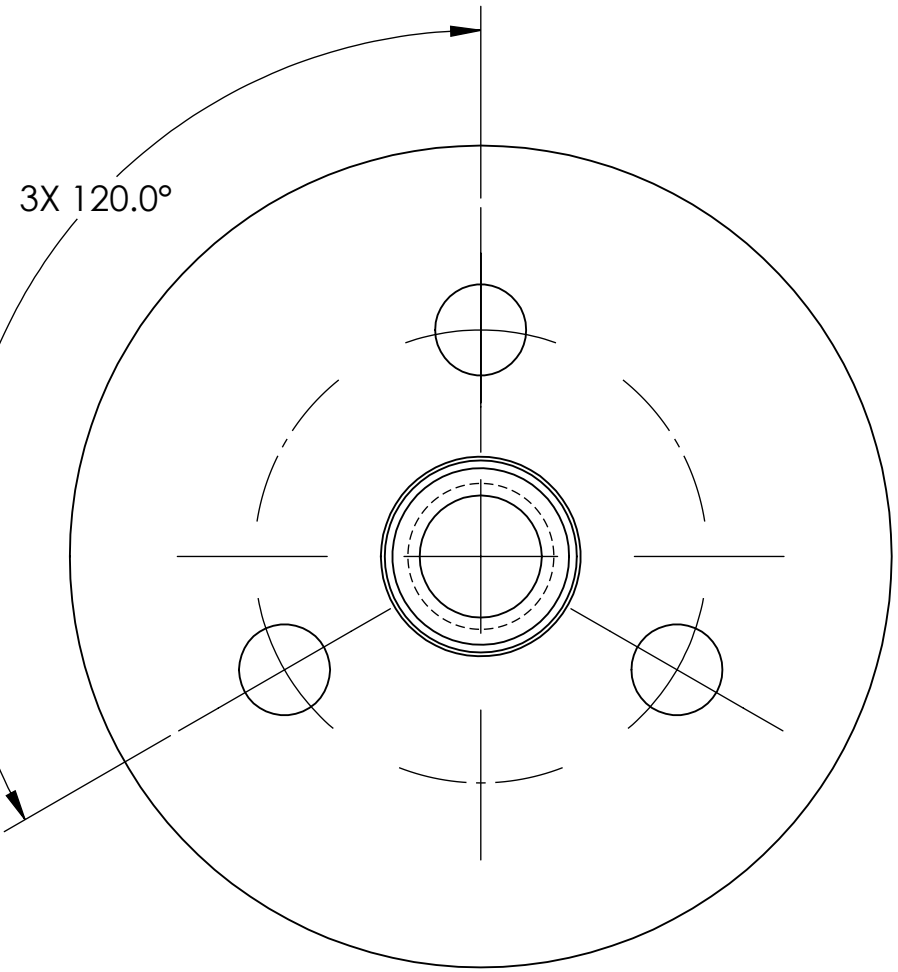
7. ALL PARTS SHALL BE MANUFACTURED IN ACCORDANCE WITH LIGO SPECIFICATION E0900364.

C

D1300124 MODIFIED UPA1 OPTIC HOLDER, ISC, aLIGO, PART PDM REV: X-000, DRAWING PDM REV:



SECTION A-A



NOTES AND TOLERANCES: (UNLESS OTHERWISE SPECIFIED)

| | |
|---|------------|
| DIMENSIONS ARE IN INCHES | |
| TOLERANCES: .XX ± .01 .XXX ± .005 ANGULAR ± 0.5° | |
| 1. INTERPRET DRAWING PER ASME Y14.5-1994. 2. REMOVE ALL SHARP EDGES, .005-.015, FOR MACHINED PARTS. ROUND ALL EDGES APPROXIMATELY R.02 FOR SHEET METAL PARTS. 3. DO NOT SCALE FROM DRAWING. 4. ALL MACHINING FLUIDS MUST BE FULLY SYNTHETIC, FULLY WATER SOLUBLE AND FREE OF SULFUR, SILICONE, AND CHLORINE. | |
| MATERIAL | 6061-T6 Al |
| FINISH | μinch |

LIGO CALIFORNIA INSTITUTE OF TECHNOLOGY
 MASSACHUSETTS INSTITUTE OF TECHNOLOGY

SYSTEM: **ADVANCED LIGO** SUB-SYSTEM: **ISC**

NEXT ASSY

| | | | |
|--|----------|-------------|-----------------|
| PART NAME MODIFIED NEWPORT UPA1, 1" OPTIC HOLDER | | | |
| DESIGNER | SBARNUM | 11 FEB 2013 | SIZE DWG. NO. |
| DRAFTER | SBARNUM | 12 FEB 2013 | B |
| CHECKER | SBARNUM | 12 FEB 2013 | D1300124 |
| APPROVAL | PFRITSCH | 12 FEB 2013 | REV. v1 |
| SCALE: 4:1 | | PROJECTION: | SHEET 1 OF 1 |

8

7

6

5

4

3

2

1