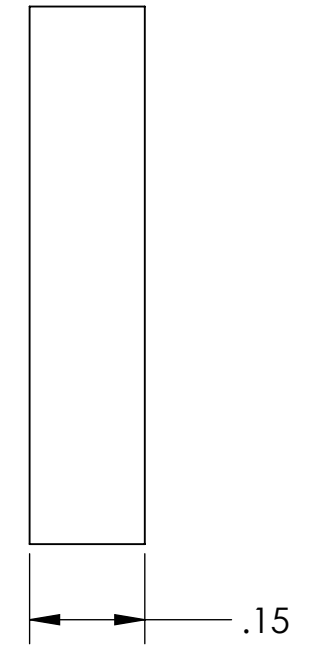
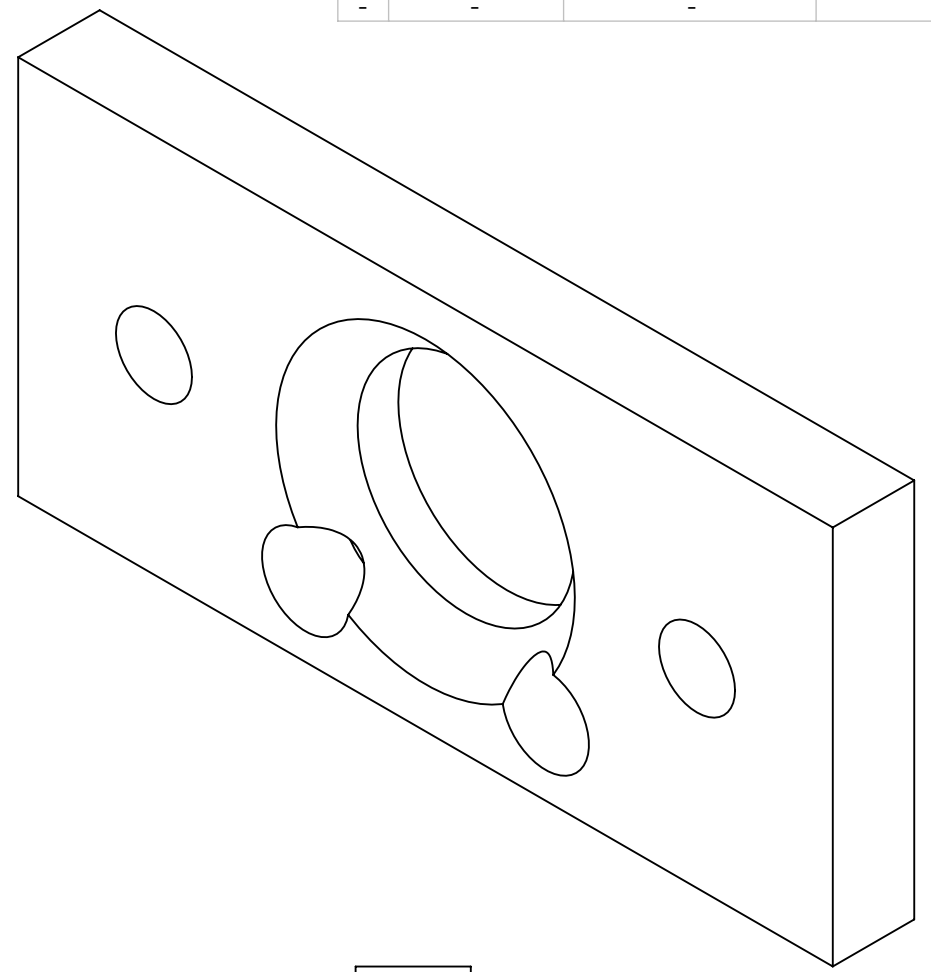
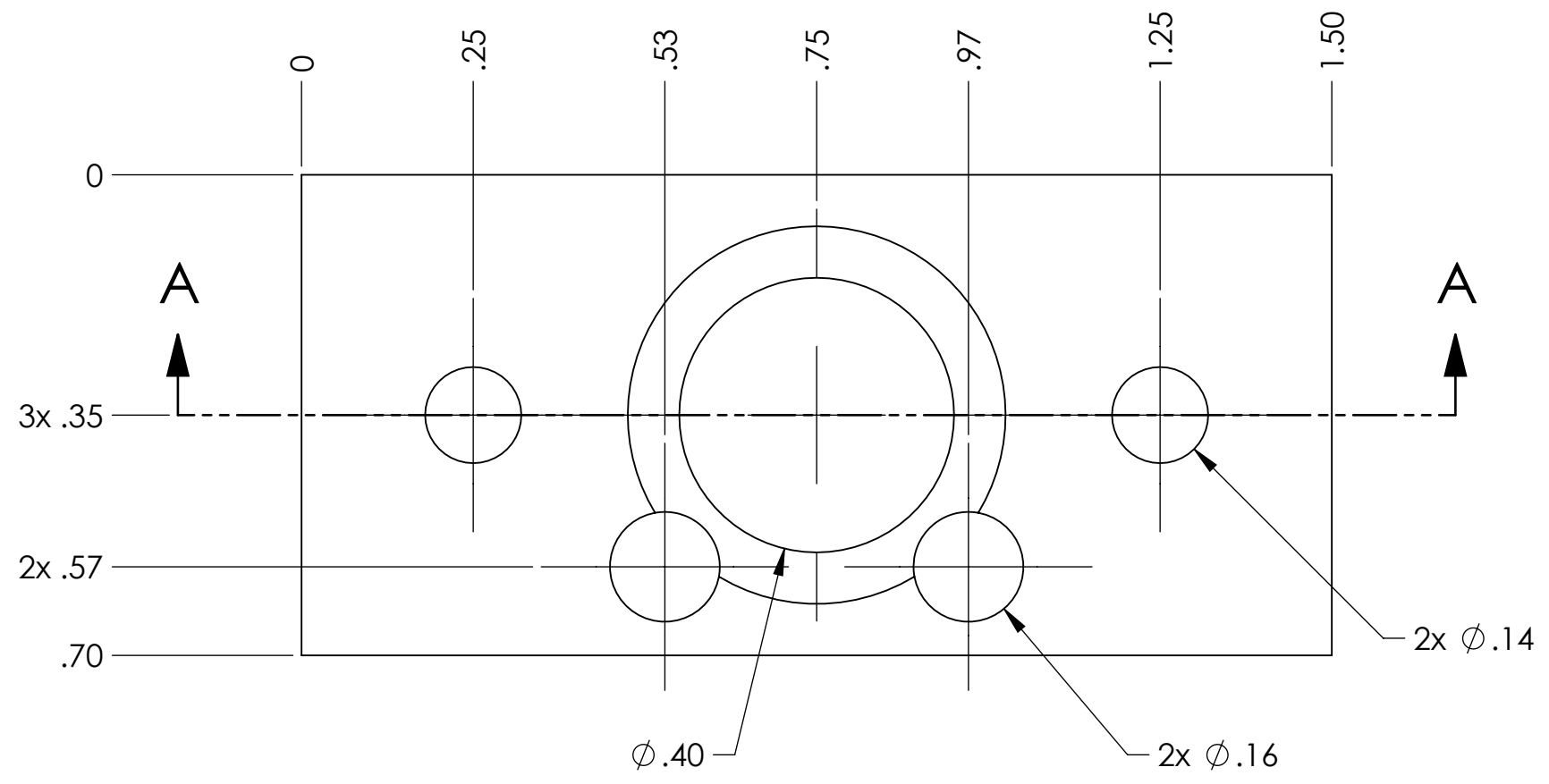
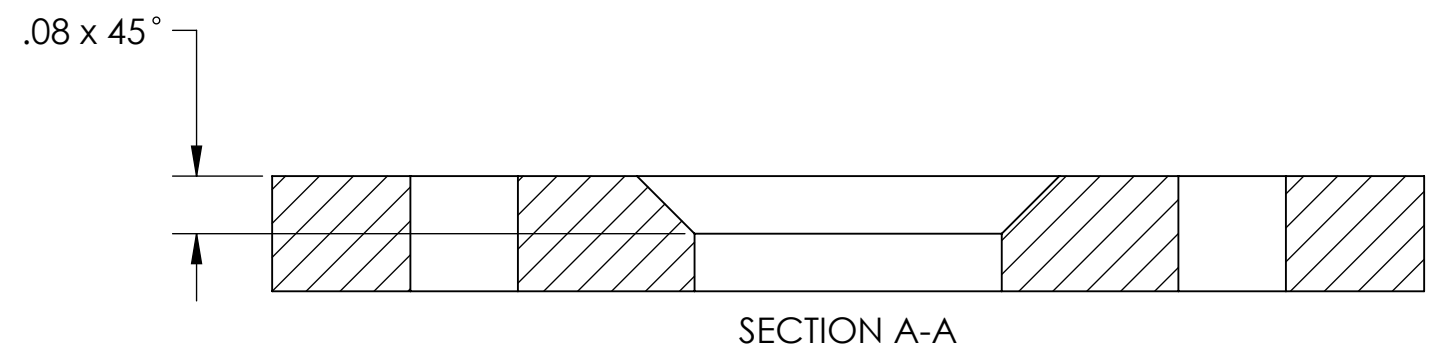


D1300188 aLIGO OMC CURVED MIRROR BONDING FIXTURE RING, PART PDM REV: X-000, DRAWING PDM REV: X-000

**NOTES CONTINUED:**  
 3. SCRIBE, ENGRAVE, OR MECHANICALLY STAMP (NO INKS OR DYES) DRAWING PART NUMBER, REVISION (AND VARIANT OR "TYPE" IF APPLICABLE) ON NOTED SURFACE OF PART FOLLOWED ON THE NEXT LINE WITH A THREE DIGIT SERIAL NUMBER. SERIAL NUMBERS START AT 001 FOR THE FIRST ARTICLE AND PROCEED CONSECUTIVELY. USE MINIMUM 0.12" HIGH CHARACTERS, UNLESS THE SIZE OF THE PART DICTATES SMALLER CHARACTERS. A VIBRATORY TOOL MAY BE USED.  
 EXAMPLE: DXXXXXX-VY, TYPE-XX, S/N XXX

- 6. APPROXIMATE WEIGHT = 2 g.
- 7. MACHINE ALL SURFACES TO REMOVE OXIDES AND MILL FINISH. USE OF ABRASIVE REMOVAL TECHNIQUES IS NOT ALLOWED.
- 8. ALL PARTS SHALL BE MANUFACTURED IN ACCORDANCE WITH LIGO SPECIFICATION E0900364.
- 9. MACHINE PEEK PARTS DRY (NO COOLANT).

REV.	DATE	DCN #	DRAWING TREE #
v1	1 MAR 2013	E1300158-x0	-
-	-	-	-
-	-	-	-



**NOTES AND TOLERANCES: (UNLESS OTHERWISE SPECIFIED)**

DIMENSIONS ARE IN  
 TOLERANCES:  
 .XX ± .01  
 .XXX ± .005  
 ANGULAR ± 1°

1. INTERPRET DRAWING PER ASME Y14.5-1994.  
 2. REMOVE ALL SHARP EDGES .005-.015.  
 3. DO NOT SCALE FROM DRAWING.  
 4. N/A

**MATERIAL** PEEK 450G      **FINISH** 32 μinch

CALIFORNIA INSTITUTE OF TECHNOLOGY MASSACHUSETTS INSTITUTE OF TECHNOLOGY		<b>PART NAME</b> aLIGO OMC CURVED MIRROR BONDING FIXTURE RING	
<b>SYSTEM</b> ADVANCED LIGO	<b>SUB-SYSTEM</b> ISC	<b>DESIGNER</b> J.LEWIS 1 MAR 2013 <b>DRAFTER</b> J.LEWIS 1 MAR 2013 <b>CHECKER</b> <b>APPROVAL</b>	<b>SIZE DWG. NO.</b> <b>B D1300188</b> SCALE: 4:1    PROJECTION:     SHEET 1 OF 1
<b>NEXT ASSY</b> D1300185	<b>REV.</b> v1		