

8

7

6

5

4

3

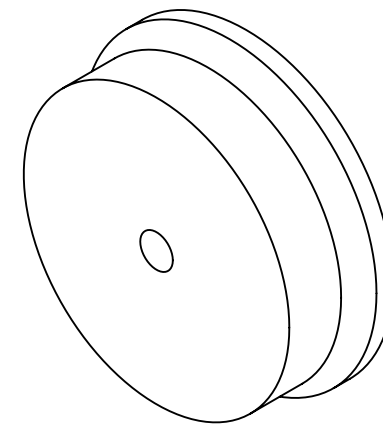
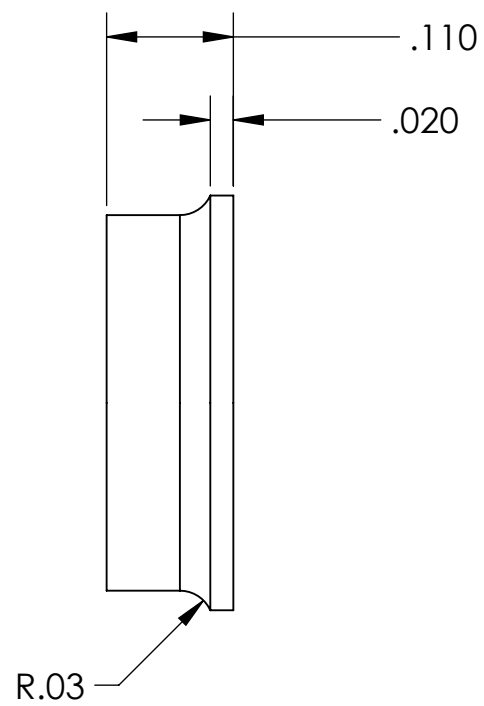
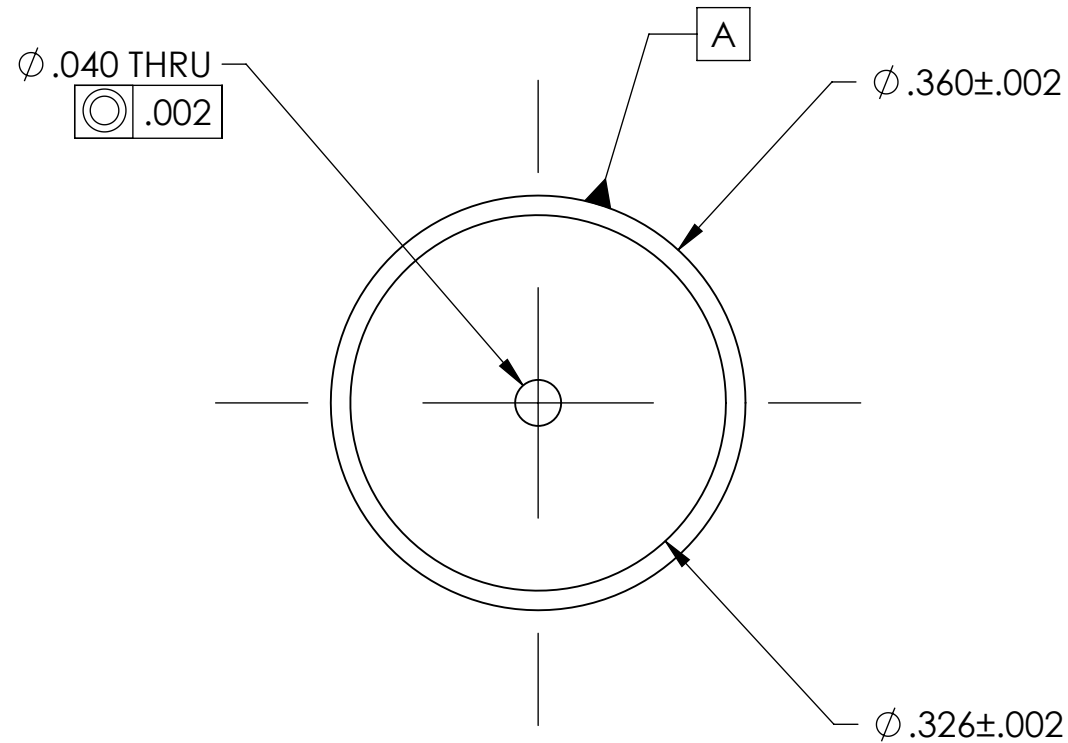
2

1

NOTES CONTINUED:

- 5. BAG AND TAG WITH PART AND SERIAL NUMBER
- 6. APPROXIMATE WEIGHT = 1.0 g.
- 7. MACHINE ALL SURFACES TO REMOVE OXIDES AND MILL FINISH. USE OF ABRASIVE REMOVAL TECHNIQUES IS NOT ALLOWED.
- 8. ALL PARTS SHALL BE MANUFACTURED IN ACCORDANCE WITH LIGO SPECIFICATION E0900364.

REV.	DATE	DCN #	DRAWING TREE #
v1	5 MAR 2013	E1300163-x0	-
-	-	-	-
-	-	-	-



D1300200 aLIGO OMC DCPD ALIGNMENT DISK, PART PDM REV: X-000, DRAWING PDM REV: X-000

D

C

B

A

D

C

B

A

NOTES AND TOLERANCES: (UNLESS OTHERWISE SPECIFIED)

DIMENSIONS ARE IN		1. INTERPRET DRAWING PER ASME Y14.5-1994.	
TOLERANCES:		2. REMOVE ALL SHARP EDGES .005-.015	
.XX ± .01		3. DO NOT SCALE FROM DRAWING.	
.XXX ± .005		4. ALL MACHINING FLUIDS MUST BE FULLY SYNTHETIC, FULLY WATER SOLUBLE AND FREE OF SULFUR, SILICONE, AND CHLORINE.	
ANGULAR ± 1°		MATERIAL	6061-T6
		FINISH	63 μinch

<b>LIGO</b> CALIFORNIA INSTITUTE OF TECHNOLOGY MASSACHUSETTS INSTITUTE OF TECHNOLOGY		PART NAME <b>aLIGO OMC DCPD ALIGNMENT DISK</b>	
SYSTEM <b>ADVANCED LIGO</b>	SUB-SYSTEM <b>ISC</b>	DESIGNER J.LEWIS	DATE 5 MAR 2013
NEXT ASSY <b>(D1201273)</b>	CHECKER J.LEWIS	DATE 5 MAR 2013	SIZE DWG. NO. <b>B D1300200</b>
APPROVAL		SCALE: 6:1	PROJECTION:  SHEET 1 OF 1
		REV. v1	

8

7

6

5

4

3

2

1