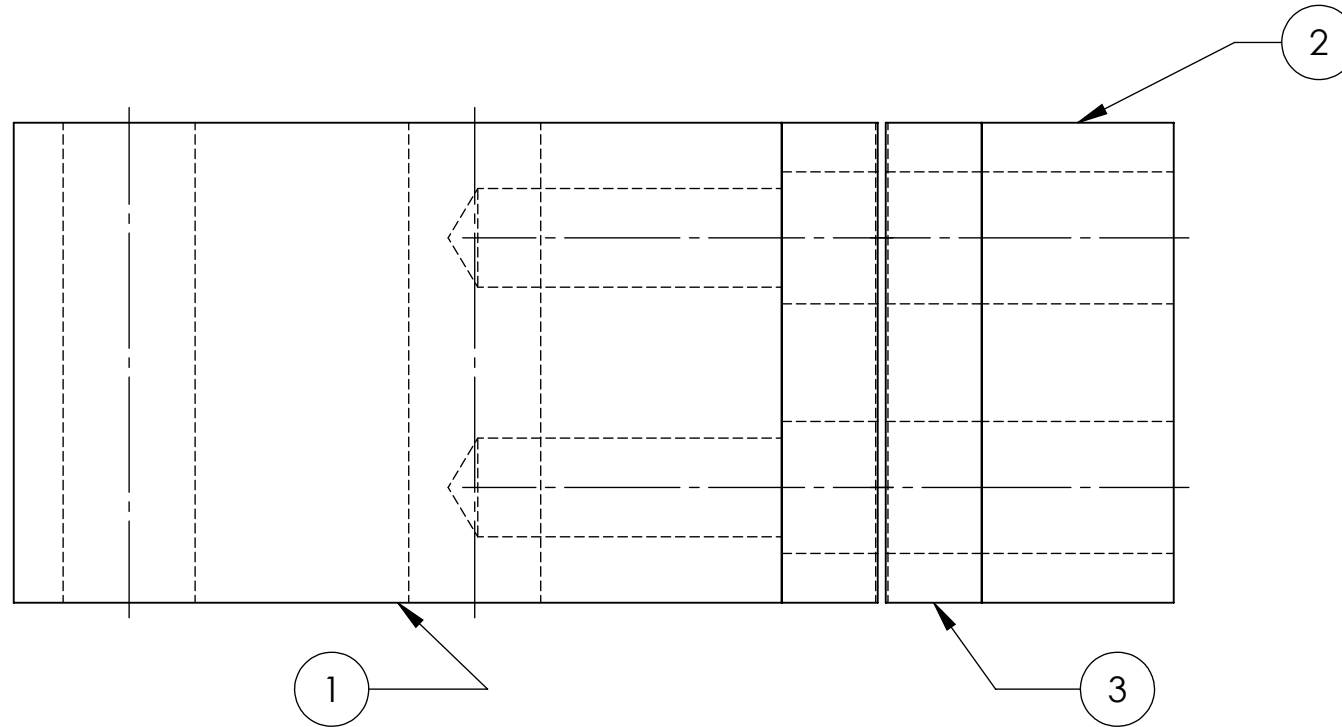
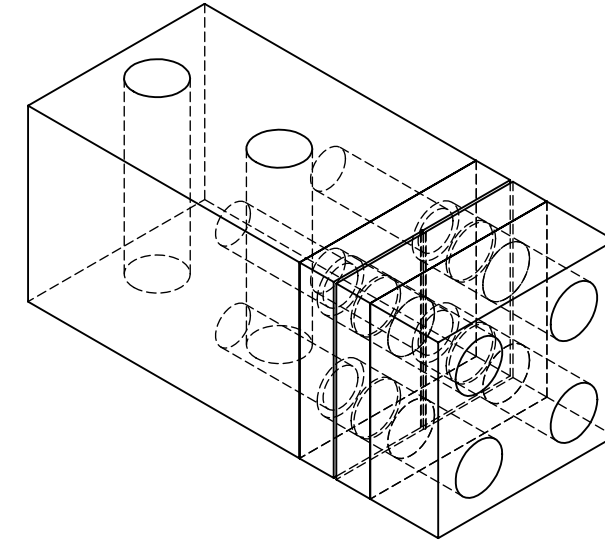
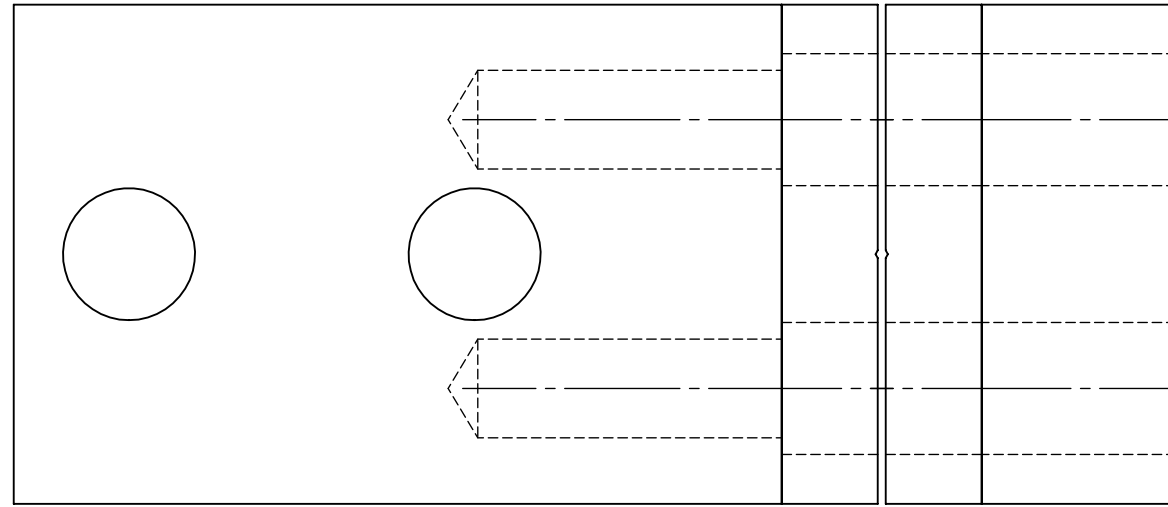


D1300351 - Wire clamp on the frame, PART PDM REV: , DRAWING PDM REV:

REV.	DATE	DCN #	DRAWING TREE #
v1	04 APR 2013	E1300257	-
-	-	-	-
-	-	-	-



ITEM NO.	PART NUMBER	DESCRIPTION	MATERIAL	REQ
3	D1300352	Wire clamp on the frame steel part	AISI 304	2
2	D1300301	Wire clamp on the frame part 2	6061 Alloy	1
1	D1300299	Wire clamp on the frame part 1	6061 Alloy	1

PARTS LIST

NOTES AND TOLERANCES: (UNLESS OTHERWISE SPECIFIED)

DIMENSIONS ARE IN INCHES

TOLERANCES:
 .XX ± 0.01
 .XXX ± 0.005
 ANGULAR ± 0.5°

1. INTERPRET DRAWING PER ASME Y14.5-1994.
 2. REMOVE ALL SHARP EDGES, .005-.015, FOR MACHINED PARTS. ROUND ALL EDGES APPROXIMATELY R.02 FOR SHEET METAL PARTS.
 3. DO NOT SCALE FROM DRAWING.
 4. ALL MACHINING FLUIDS MUST BE FULLY SYNTHETIC, FULLY WATER SOLUBLE AND FREE OF SULFUR, SILICONE, AND CHLORINE.

MATERIAL	N/A	FINISH	N/A μinch
----------	-----	--------	-----------

CALIFORNIA INSTITUTE OF TECHNOLOGY MASSACHUSETTS INSTITUTE OF TECHNOLOGY		PART NAME		Wire clamp on the frame	
SYSTEM	ADVANCED LIGO	SUB-SYSTEM	SEI	DESIGNER	A.CARBAJO 04 APR 2013
NEXT ASSY	D1300293	CHECKER	F.MATICHARD 04 APR 2013	APPROVAL	F.MATICHARD 04 APR 2013
				SIZE	DWG. NO.
				B	D1300351
				REV.	v1
				SCALE:	2:1
				PROJECTION:	
				SHEET 1 OF 1	