

8 7 6 5 4 3 2 1

NOTES CONTINUED:

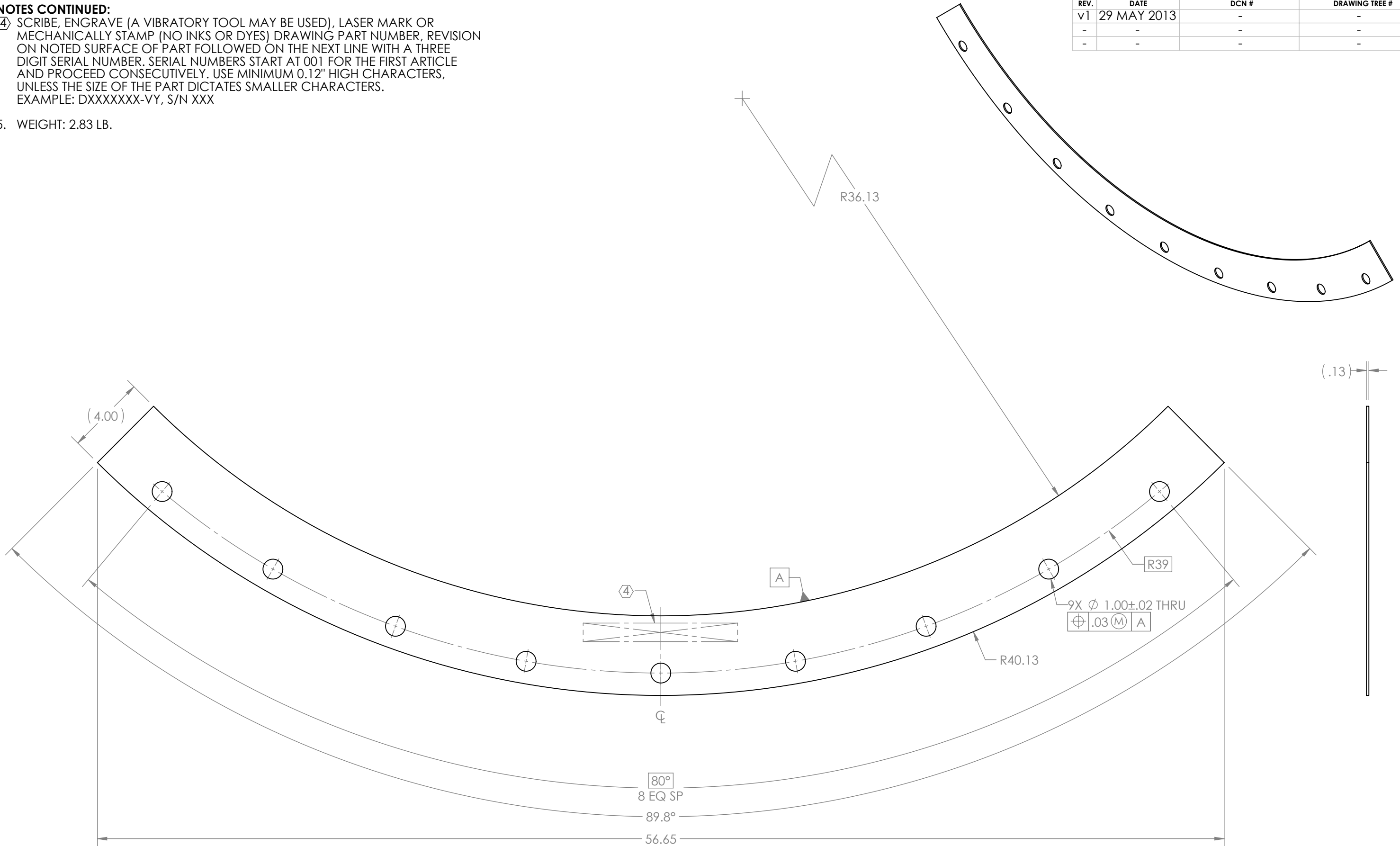
④ SCRIBE, ENGRAVE (A VIBRATORY TOOL MAY BE USED), LASER MARK OR MECHANICALLY STAMP (NO INKS OR DYES) DRAWING PART NUMBER, REVISION ON NOTED SURFACE OF PART FOLLOWED ON THE NEXT LINE WITH A THREE DIGIT SERIAL NUMBER. SERIAL NUMBERS START AT 001 FOR THE FIRST ARTICLE AND PROCEED CONSECUTIVELY. USE MINIMUM 0.12" HIGH CHARACTERS, UNLESS THE SIZE OF THE PART DICTATES SMALLER CHARACTERS. EXAMPLE: DXXXXXXX-VY, S/N XXX

5. WEIGHT: 2.83 LB.

REV.	DATE	DCN #	DRAWING TREE #
v1	29 MAY 2013	-	-
-	-	-	-
-	-	-	-

D1300496 aLIGO FMP Tooling, Flange Protector, 72.25 in. I.D., PART PDM REV: X-000, DRAWING PDM REV: X-000

D C B A



NOTES AND TOLERANCES: (UNLESS OTHERWISE SPECIFIED)

DIMENSIONS ARE IN INCHES
 TOLERANCES:
 .XX ± .03
 .XXX ± N/A
 ANGULAR ± 0.5°

1. INTERPRET DRAWING PER ASME Y14.5-1994.
 2. BREAK ALL SHARP EDGES, .02 MAX.
 3. DO NOT SCALE FROM DRAWING.

MATERIAL
 6061-T6 Al, 1/8" SHEET

FINISH
 N/A

LIGO CALIFORNIA INSTITUTE OF TECHNOLOGY
 MASSACHUSETTS INSTITUTE OF TECHNOLOGY

SYSTEM
 ADVANCED LIGO

SUB-SYSTEM
 FMP

NEXT ASSY
 N/A

PART NAME
 aLIGO FMP TOOLING:
 FLANGE PROTECTOR, 72-1/4" I.D.

DESIGNER
 C. CONLEY

DRAFTER
 C. CONLEY

CHECKER

APPROVAL

SIZE DWG. NO.
 B D1300496

REV.
 v1

SCALE: NONE **PROJECTION:** 1st Angle **SHEET 1 OF 1**

8 7 6 5 4 3 2 1