



COC QA TEST REPORT

ITM09 Transmission

Test Date	Feb 27- Mar 2, 2015		
Author(S)	Liyuan Zhang, GariLynn Billingsley		
Approval(s)			
Specification Doc.	LIGO-E0900041	Specification	0.013-0.015
Procedure Doc.	LIGO-E1000863	Mean ± Error*	0.0148 ± 0.0003
Conclusion	Qualified.		

*Error is the calibration error, which is ~2%.

Discussions and Comments:

The scan was done over central 160 mm in diameter with the beam and step sizes of 1 mm while keeping the arrow on barrel at Y+ direction, as shown in Fig.1. The calibration is done by normalizing the transmitted signal to the signal without mirror and the variation of laser power is monitored and corrected.

ITM09 Transmission

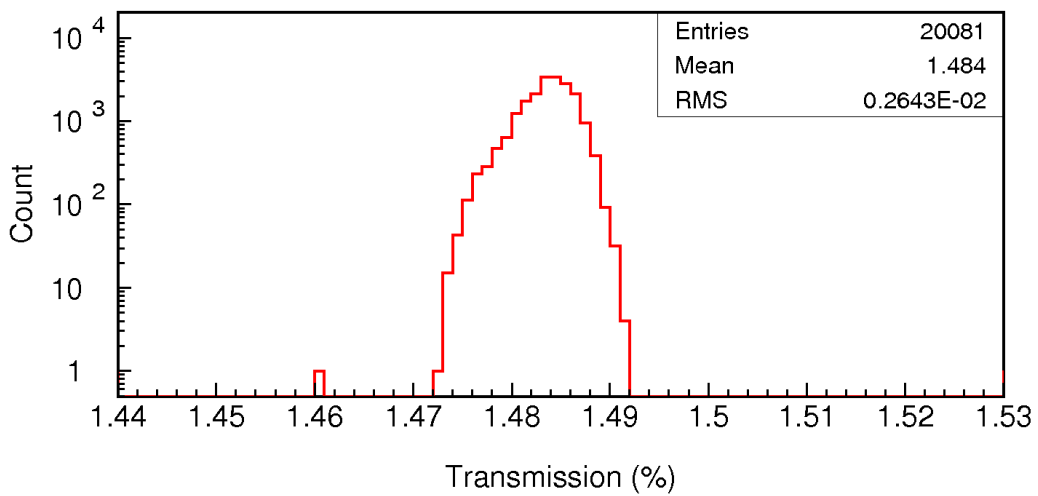
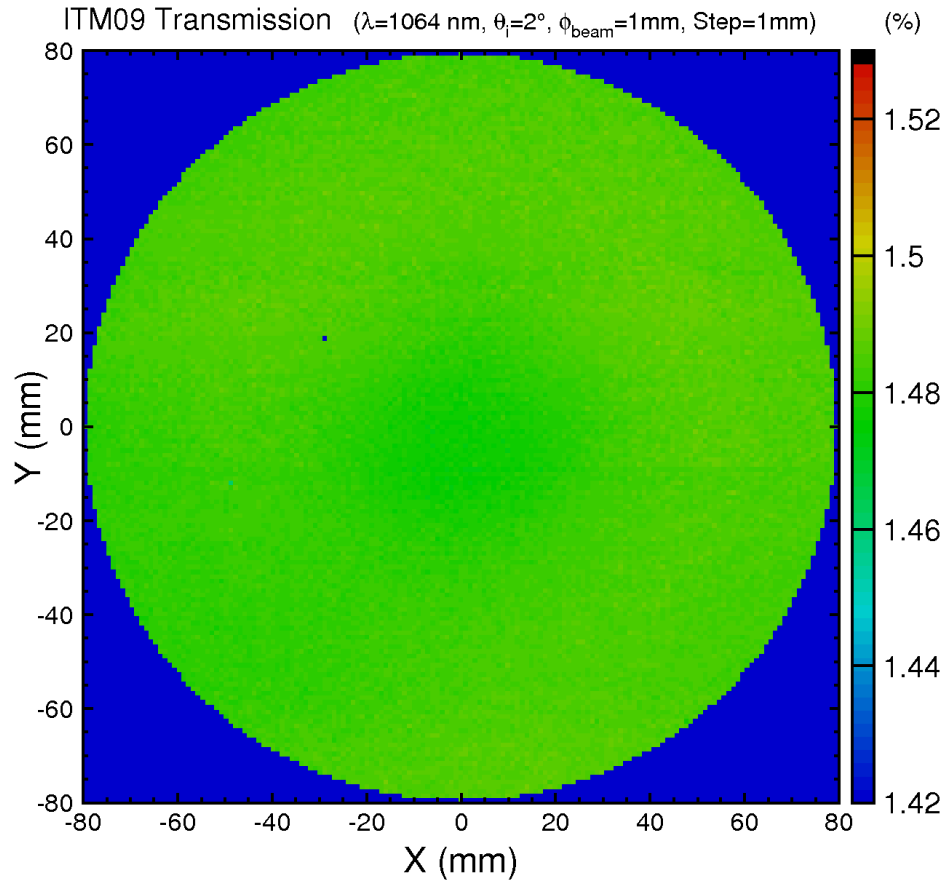


Fig. 1 ITM09 transmission over a 160 mm diameter aperture.