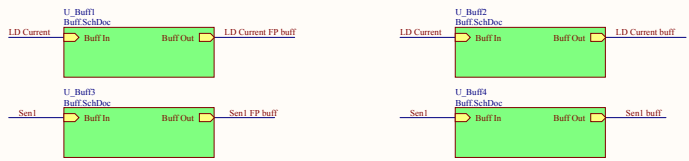
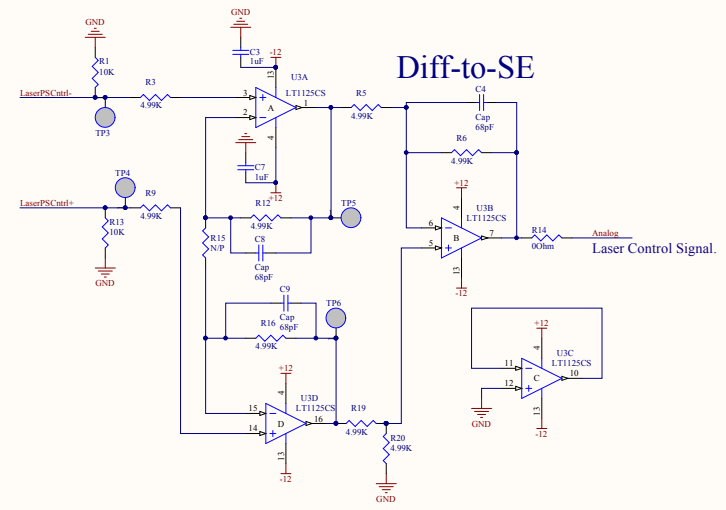


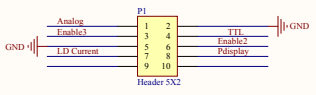
Signal Buffers



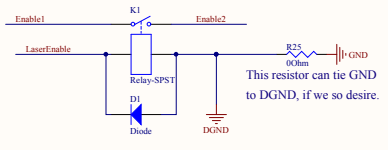
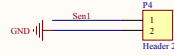
Diff-to-SE



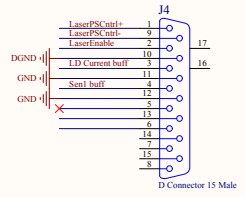
Power Supply Footprint is reversed
So their Pin 8 (LD I) is our Pin7, and their Pin 6 GND is our Pin 5.



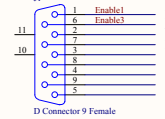
LD Temp Voltage from J3-pin taken from Sen1 Board.



Connector out to PCal Interface

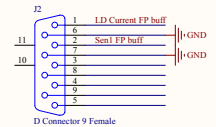


To access Control

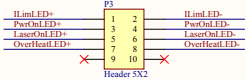


Enable signals from access controller that will be daisy-chained with the Laser Enable command, and the Laser Input pins

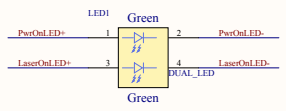
Front Panel Monitor Connector



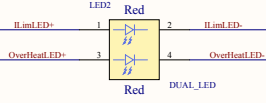
Header connector to bare wires soldered into the PS board.



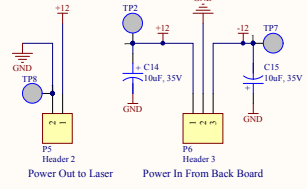
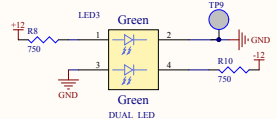
Front Panel Laser Power Indicators



Front Panel Fault Indicators

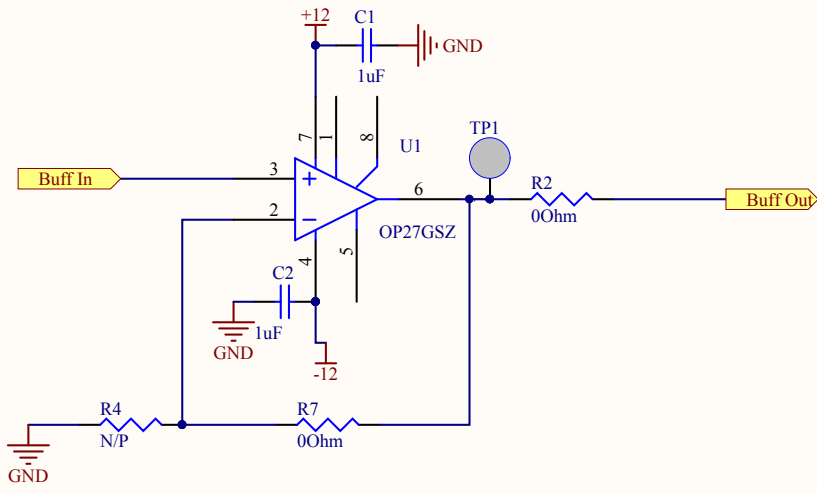


Front Panel Board Power Indicators

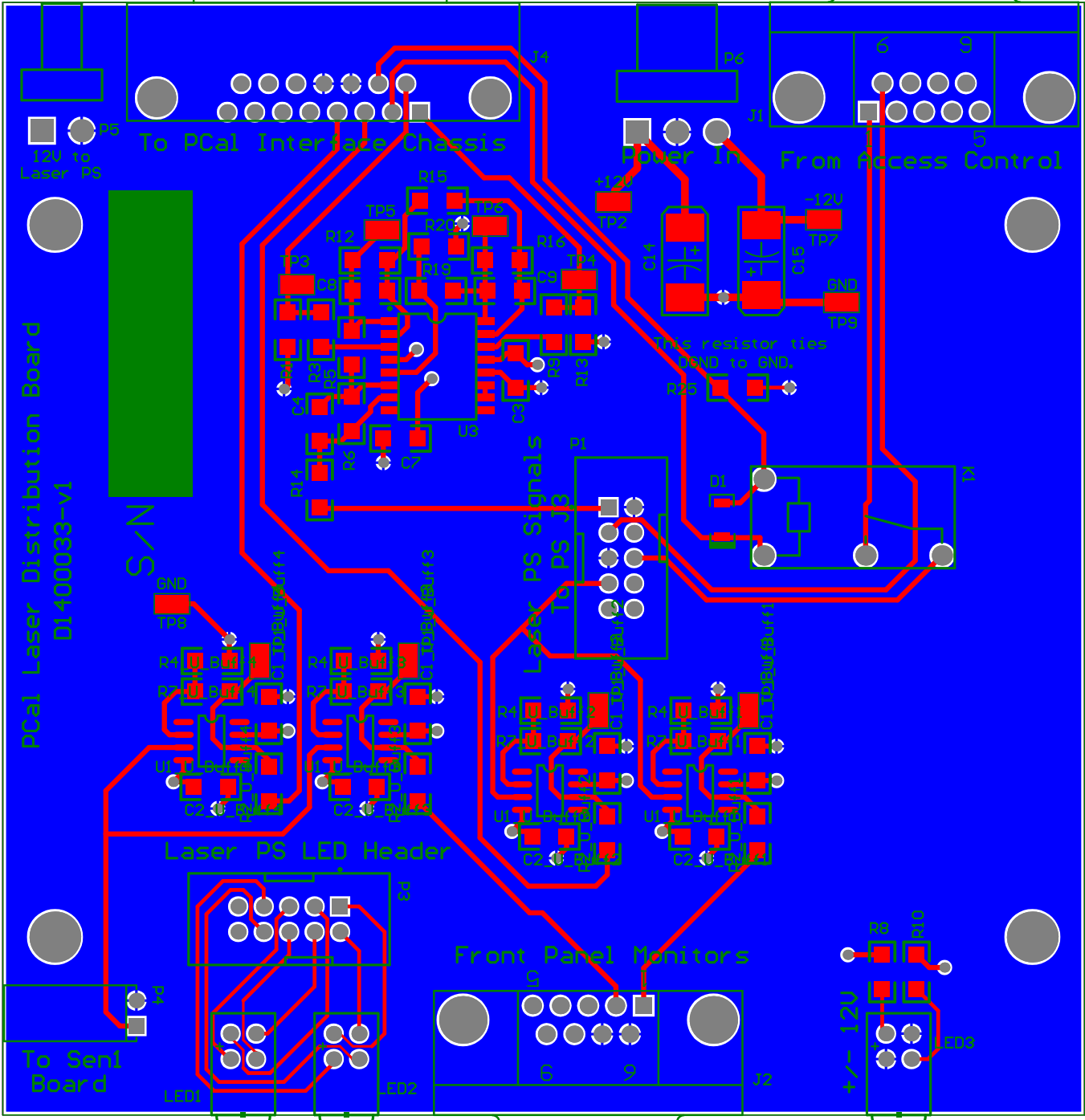


Title	PCal Laser Distribution Board		
Size:	C	DCC Number: D1400033	Ligo Project California Institute of Technology Massachusetts Institute of Technology
Drawn by:		Date: 5/6/2014	Revision: v1
Title: C:\restored\Bert\AOS\PCal\Buff\PowerandAOM\Classes\LaserDistri... File: C:\restored\Bert\AOS\PCal\Buff\PowerandAOM\Classes\LaserDistri... Sheet 1 of 1			





Title		
Size	Number	Revision
A		
Date:	5/6/2014	Sheet of
File:	C:\restored\...\Buff.SchDoc	Drawn By:



PCal Laser Distribution Board
DI-400033-V1

S/N

To PCal Interface Chassis

Power In

From Access Control

No resistor ties
GND to GND.

Laser PS LED Header

Front Panel Monitors

To Serial Board

+/- 120V
ED3