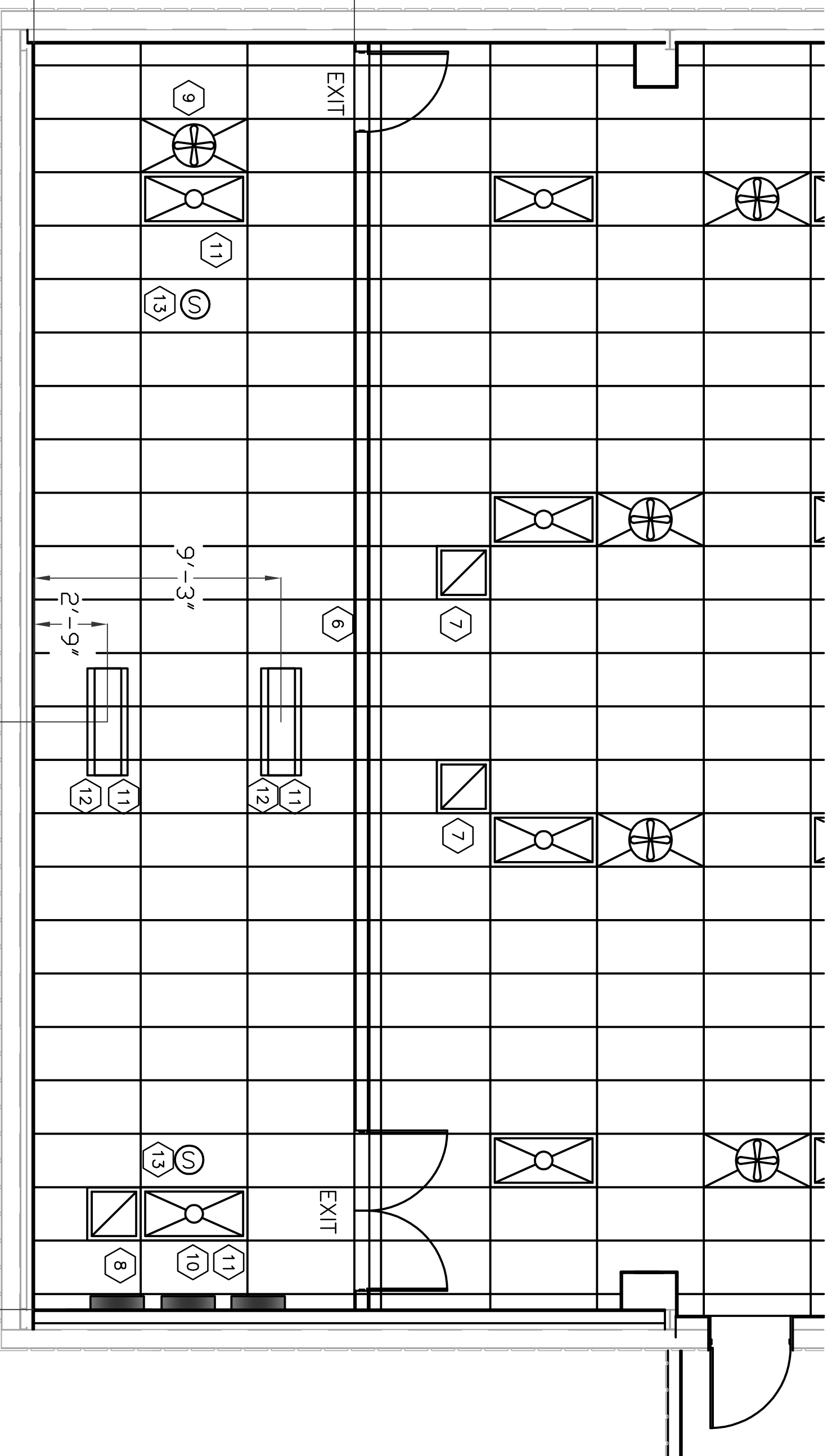
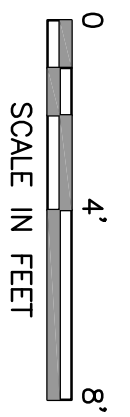


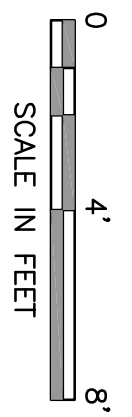
REFLECTED CEILING DEMO PLAN

SCALE: 1/4" = 1'-0"

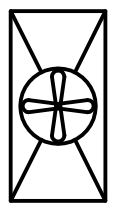
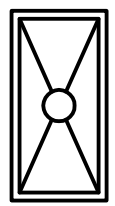


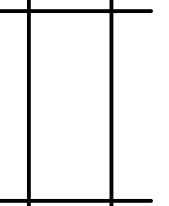




REFLECTED CEILING PLAN

SCALE: 1/4" = 1'-0"



LEGEND

-  FAN/FILTER UNIT, PF-1
-  4'-0" x 2'-0" FLUORESCENT LIGHT FIXTURE, SEALED CLEAN ROOM DESIGN, 52W, 4 LAMPS, 277V, ELECTRONIC BALLASTS.
-  4'-3" LAMP SURFACE MOUNT LIGHT FIXTURE, 277V, 32W, ELECTRONIC BALLASTS
-  EXIT LIGHT
-  4'-0" x 2'-0" SUSPENDED ACOUSTICAL TILE CEILING.
-  RETURN AIR GRILLE
-  HEAT/SMOKE DETECTOR

CONSTRUCTION NOTES

- 1 REMOVE (RELOCATE) RETURN AIR GRILLES. (SEE REFLECTED CEILING PLAN, THIS SHEET.) REPLACE WITH NEW CEILING TILES. SUSPENDED TILE SHALL BE VINYL COATED OR ACRYLIC/PVC FOR CLEAN ROOM ENVIRONMENTS.
- 2 REMOVE FAN FILTER UNIT AND WIRING. STORE PER OWNER INSTRUCTIONS.
- 3 REMOVE AND RELOCATE FAN FILTER UNIT. (SEE REFLECTED CEILING PLAN, THIS SHEET.)
- 4 MOVE LIGHT FIXTURE. (SEE REFLECTED CEILING PLAN, THIS SHEET.)
- 5 REMOVE LIGHT FIXTURES. REPLACE WITH CEILING TILES. (SEE REFLECTED CEILING PLAN, THIS SHEET.) SUSPENDED TILE SHALL BE VINYL COATED OR ACRYLIC/PVC FOR CLEAN ROOM ENVIRONMENTS.
- 6 MODIFY CEILING GRID MOUNTING TO FIT THREE COMPLETE CEILING PANELS WIDE IN NEW DCS ROOM. MODIFY MOUNTING ON WAREHOUSE SIDE OF WALL TO ACCOMMODATE NEW SEPARATING WALL. INSTALL NEW PANELS WHERE REQUIRED, AND REUSE PANELS WHEN POSSIBLE. SUSPENDED TILE SHALL BE VINYL COATED OR ACRYLIC/PVC FOR CLEAN ROOM ENVIRONMENTS.
- 7 RELOCATE RETURN AIR GRILLES TO THIS LOCATION.
- 8 INSTALL NEW RETURN AIR GRILLE.
- 9 RELOCATE FAN-FILTER UNIT TO THIS LOCATION. PROVIDE WIRING AND INDIVIDUAL CONTROL FOR THIS UNIT WITHIN THE ROOM. SUPPORT FILTER/FAN UNITS FROM MASON INDUSTRIES WHR40 RUBBER CEILING HANGERS.
- 10 RELOCATE LIGHT FIXTURE TO THIS LOCATION.
- 11 PROVIDE SWITCHING (CONTROL) FOR THIS GROUP OF LIGHTS WITHIN THE ROOM.
- 12 INSTALL AND SECURELY SUPPORT/SUSPEND LIGHT FIXTURES BELOW DUCT AND AC UNITS.
- 13 INSTALL AND PROVIDE SMOKE/FIRE SENSORS.

LIGO HANFORD OBSERVATORY  
DRAWING: LIGO- D10400305-V1

**HIBBS ENGINEERING, INC.**  
KENNEWICK, WASHINGTON

DRAWING NUMBER: 305  
REV: VI

LHO DCS FACILITY  
REFLECTED CEILING PLAN

PROJECT NUMBER: 1071.010  
CAD FILE: 107101A01.DWG

© 2014 Hibbs Engineering, Inc.

DRAWN BY: GLH  
CHECKED BY:  
DESIGN A/E: DESIGN GM  
HEI APPROVAL:

EXPRESS 10/31/15

REV NO	DATE	BY	DESCRIPTION	APPROVED

DATE OF ISSUE